

Diamond Deck

Installation Instructions:

1. Just roll out and your done.



2. Stick to floor using Max Grip Carp Tape.



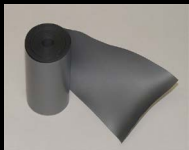
3. Glue seams together with Oatey X-15 Adhesive or similar adhesive available at your local hardware store and our Vinyl Backer.
(One 16 oz can of adhesive is enough to complete two 24' seams)



+

Makes a water proof seal. Installation Instructions

Vinyl Backer, 24' x 4"



4. Permanently glue to floor using Epoxy.