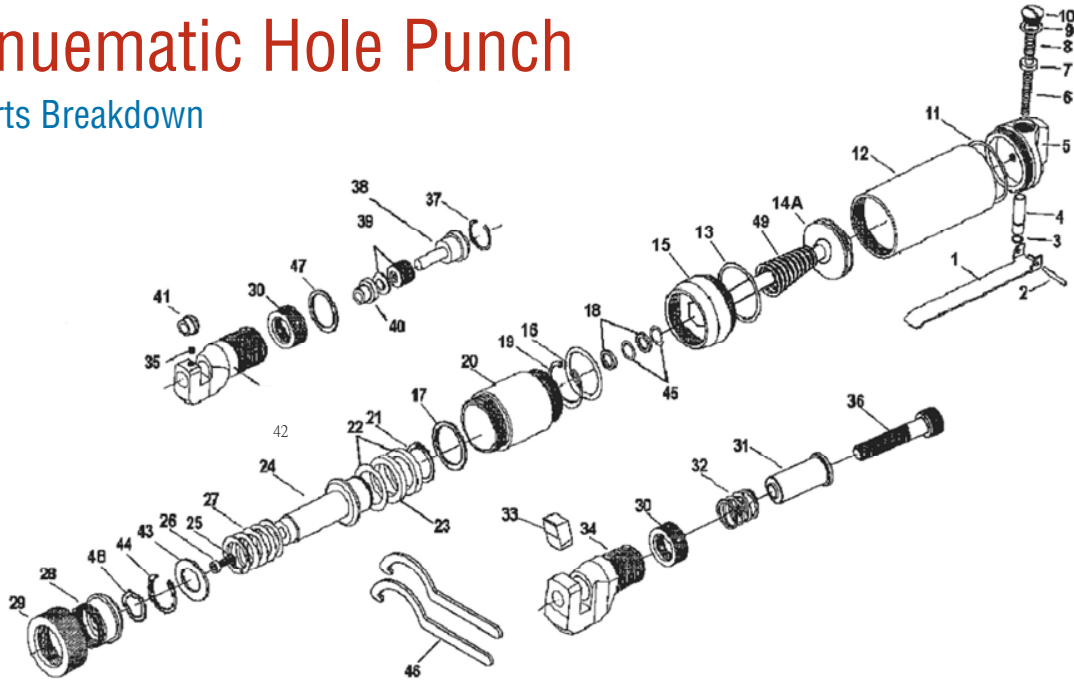


Pneumatic Hole Punch

Parts Breakdown



Ref. No.	Part No.	Description	Q'ty /Tool	Ref. No.	Part No.	Description	Q'ty /Tool
1	SPMP050A01	Throttle Lever	1	34	SPMP05034	Holder	1
2	SPMP050A02	Lever Pin	1	35	SPMP05035	Set Screw	1
3	SPMP050A03	O-Ring	1	36	SPMP05036	Screw	1
4	SPMP050A04	Push Rod	1	37	SPMP05037	E-Ring	1
5	SPMP050A05	Valve Body	1	38	SPMP05038A	Punch 4.0mm	1
6	SPMP050A06	Spring	1		SPMP05038B	Punch 6.5mm	
7	SPMP050A07	Valve	1		SPMP05038C	Punch 5.5mm	
8	SPMP050A08	Spring	1		SPMP05038D	Punch 8.0mm	
9	SPMP050A09	O-Ring	1	39	SPMP05039A	Washer 4.0mm	15
10	SPMP050A10	Screw	1		SPMP05039B	Washer 6.5mm	
11	SPMP050A11	O-Ring	1		SPMP05039C	Washer 5.5mm	
12	SPMP050A12	Housing	1		SPMP05039D	Washer 8.0mm	
13	SPMP050A13	O-Ring	1	40	SPMP05040A	Washer 4.0mm	1
14A	SPMP050A14	Piston	1		SPMP05040B	Washer 6.5mm	
15	SPMP050A15	Cylinder Nut	1		SPMP05040C	Washer 5.5mm	
16	SPMP050A16	Gasket	1		SPMP05040D	Washer 8.0mm	
17	SPMP050A17	O-Ring	1	41	SPMP05041A	Bushing 4.0mm	1
18	SPMP050A18	Seal	2		SPMP05041B	Bushing 6.5mm	
19	SPMP050A19	E-Ring	1		SPMP05041C	Bushing 5.5mm	
20	SPMP050A20	Housing	1		SPMP05041D	Bushing 8.0mm	
21	SPMP050A21	E-Ring	1	42	SPMP05042	Holder	1
22	SPMP050A22	Seal	2	43	SPMP05043	Washer	1
23	SPMP050A23	O-Ring	1	44	SPMP05044	E-Ring	1
24	SPMP050A24	Hydr. Piston	1	45	SPMP05045	O-Ring	2
25	SPMP050A25	O-Ring	1	46	SPMP05046	Wrench	2
26	SPMP050A26	Screw	1	47	SPMP05047	Gasket	1
27	SPMP050A27	Spring	1	48	SPMP05048	Wave Washer	1
28	SPMP050A28	Clamp Screw	1	49	SPMP05049	Spring	1
29	SPMP050A29	Clamp Nut	1				
30	SPMP050A30	Clamp Nut	2	RK	SPMP050RK	Repair Kit Ref. No.-- 39(x15), 40, 43, 48	
31	SPMP050A31	Flange Die	1	SK	SPMP050SK	Service Kit Ref. No.-- 3, 6, 8, 9, 11, 13, 17, 23, 25, 27, 32,	
32	SPMP050A32	Spring	1				
33	SPMP050A33	Flange Die	1				

