



**Chicago  
Pneumatic**

# ***Operator's Manual***

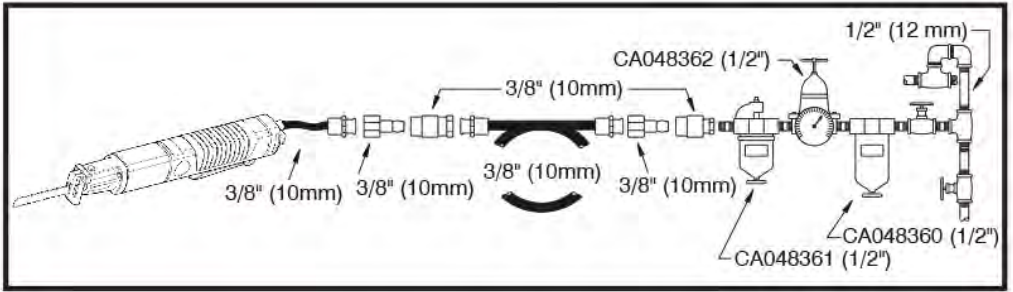
**CP7900, CP7901,  
CP9881, CP9705, CP9710  
Reciprocating Saw & Air File**



## **⚠ WARNING**

**To reduce risk of injury, everyone using, installing, repairing, maintaining, changing accessories on, or working near this tool must read and understand these instructions, as well as separately provided safety instructions part number 6159948790, before performing any such task.**

# Air Diagram:



\* To see in Fig.2 for details.

Fig. 1

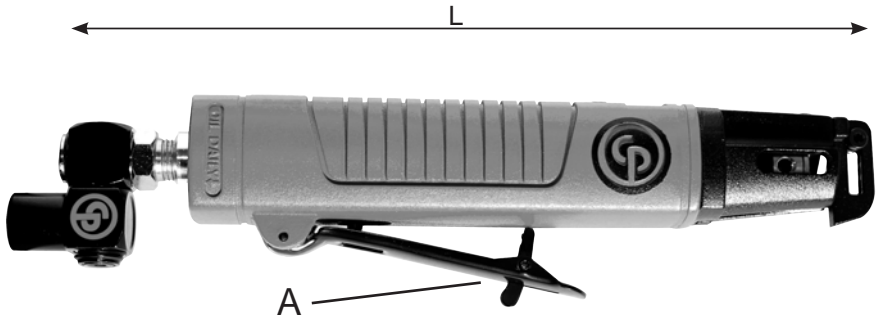


Fig. 2

Model	Strike Frequency	Stroke		Overall Length		Weight		Air Consumption @load		Air Inlet	Inner Hose Dia.		Sound Pressure LpA	Sound Power LwA	Vibrations	
	1	3		5		6		7		8	9		10		11	12
bpm	[mm]	[inch]	[mm]	[inch]	[Kg]	[lb]	[Nl/s]	[SCFM]	[inch]	[mm]	[inch]	[dB(A)]	[dB(A)]	[m/s²]	[m/s²]	
CP7900	10000	10	3/8	216	8.5	0.59	1.3	2.6	5.5	1/4	10	3/8	82	93	19.6	5.2
CP7901	10000	25	1	229	9	0.86	1.9	2.6	5.5	1/4	10	3/8	78	89	<2.5	
CP9881	5500	25	1	268	10.5	1	2.2	3.1	6.7	1/4	10	3/8	81	92	<2.5	
CP9705	12000	5	0.2	204	8.03	0.56	1.23	2.8	6	1/4	10	3/8	73	84	5	3
CP9710	8000	10	0.4	250	9.84	0.59	1.3	2.8	6	1/4	10	3/8	63	74	5	3

# CP7900, CP7901, CP9881, CP9705, CP9710 Series

## Reciprocating Saw & Air file

### 1. Technical Data (see Fig 2.)

Model	Strike Frequency	Stroke	Overall Length		Weight	Air Consumption @load	Air Inlet	Inner Hose Dia.	Sound Pressure LpA	Sound Power LwA	Vibrations					
											ahd	K				
	1	3	5		6	7	8	9	10	11	12					
	bpm	[mm]	[inch]	[mm]	[inch]	[Kg]	[lb]	[NI/s]	[SCFM]	[inch]	[mm]	[inch]	[dB(A)]	[dB(A)]	[m/s²]	[m/s²]

max pressure 6.3 bar (90 psi)

$a_{wa}$ : Vibration level,  $k$  Uncertainty;  $L_{pA}$  Sound pressure level dB(A),  $K_{pA} = K_{WA} = 3$  dB Uncertainty.

**Declaration of noise (ISO 15744) and vibration emission (ISO 28927-8)**

All values are current as of the date of this publication.

These declared values were obtained by laboratory type testing in accordance with the stated standards and are suitable for comparison with the declared values of other tools tested in accordance with the same standards. These declared values are not adequate for use in risk assessments and values measured in individual work places may be higher. The actual exposure values and risk of harm experienced by an individual user are unique and depend upon the way the user works, the workpiece and the workstation design, as well upon the exposure time and the physical condition of the user.

We, CHICAGO PNEUMATIC TOOLS, cannot be held liable for the consequences of using the declared values, instead of values reflecting the actual exposure, in an individual risk assessment in a work place situation over which we have no control.

This tool may cause hand-arm vibration syndrome if its use is not adequately managed.

We recommend a programme of health surveillance to detect early symptoms which may relate to noise or vibration exposure, so that management procedures can be modified to help prevent future impairment.

### 2. Machine Type

- No other use permitted. For professional use only.
- Please read the product safety information carefully!

### 3. Implementation and Operation

- Connect device as shown in Fig.01.
- Fix the accessories properly to the tool.
- To start the machine, simply push the main lever (A). Release the main lever to stop.

### 4. Lubrication

- If air line lubricator is not used, lubricate with SAE #10 turbine oil or equivalent oil daily before use. Do not burst into full speed operation after lubrication. Recommended lubricant CP Oil PROTECTO-LUBE:
  - 4 oz (0.12l) P/N: CA149661
  - 20.8 oz (0.591l) P/N: CA000046
  - 1gal (3.8l) P/N: P089507

### 5. Maintenance

- Follow local country environmental regulations for safe handling and disposal of all components.
- It's recommended to dismantle the tool for overhauling and cleaning periodically after 500 hours of operation or once every six months.
- Always ensure that the machine is disconnected from energy source ( compressed air ) to avoid accidental operation.
- High wear parts are underlined in the parts list.
- To keep downtime to a minimum, the following service kits are recommended:  
**Tune-Up Kit:** see part list

### 6. Disposal

- The disposal of this equipment must follow the legislation of the respective country.
- All damaged, badly worn or improperly functioning devices MUST BE TAKEN OUT OF OPERATION.
- Repair only by technical maintenance staff.

### 7. Declaration of conformity

Declare that the product(s): **Reciprocating Saw & Air file**

Machine type(s) : **CP7900, CP7901, CP9881  
CP9705, CP9710**

Serial Number: **From 00001 to 99999**

Origin of the product : **TaiWan**

is in conformity with the requirements of the council Directives on the approximation of the laws of the Member States relating to "Machinery" **2006/42/EC (17/05/2006)** applicable harmonised standard(s) : **EN ISO 11148-12:2010**

Name and position of issuer : **Bruno BLANCHET ( General Manager )**

Place & Date : Saint-Herblain, **02/04/2013**



### Copyright 2012, Chicago Pneumatic Tool Co. LLC

All rights reserved. Any unauthorized use or copying of the contents or part thereof is prohibited. This applies in particular to trademarks, model denominations, part numbers and drawings. Use only authorized parts. Any damage or malfunction caused by the use of unauthorized parts is not covered by Warranty or Product Liability.



## WARNING

To reduce risk of injury, everyone using, installing, repairing, maintaining, changing accessories on, or working near this tool must read and understand these instructions before performing any such task.

# SAFETY INSTRUCTIONS

## • DO NOT DISCARD - GIVE TO USER

- Our goal is to produce tools that help you work safely and efficiently. The most important safety device for this or any tool is YOU. Your care and good judgement are the best protection against injury. All possible hazards cannot be covered here, but we have tried to highlight some of the important ones.
- Only qualified and trained operators should install, adjust or use this power tool.
- This tool and its accessories must not be modified in any way.

### ⚠ Air supply and connection hazards

- Air under pressure can cause severe injury.
- Always shut off air supply, drain hose of air pressure and disconnect tool from air supply when not in use, before changing accessories or when making repairs.
- Never direct air at yourself or anyone else.
- Whipping hoses can cause severe injury. Always check for damaged or loose hoses and fittings.
- Do not use quick disconnect couplings at tool. See instructions for correct set up.
- Whenever universal twist couplings are used, lock pins must be installed.
- Do not exceed maximum air pressure of 6.3 bar / 90 psig, or as stated on tool nameplate.

### ⚠ Entanglement hazards

- Do not wear jewellery or loose clothing.
- Choking can occur if neckwear is not kept away from tool and accessories.
- Scalping can occur if hair is not kept away from tool and accessories.
- Never stop a saw blade by pressing on it.
- Ensure the guard (if provided) is correctly fitted and functioning properly. A moveable guard must not be locked in the open position.

### ⚠ Projectile hazards

- Always wear impact-resistant eye and face protection when involved with or near the operation, repair or maintenance of the tool or changing accessories on the tool.
- Be sure all others in the area are wearing impact-resistant eye and face protection.
- Even small projectiles can injure eyes and cause blindness.

- Do not use cracked or deformed accessories.
- Ensure the saw blade or cutter is properly clamped using the tools provided.
- Ensure that sparks and metal cuttings are directed so as not to cause a hazard.

### ⚠ Operating hazards

- Operators and maintenance personnel must be physically able to handle the bulk, weight and power of the tool.
- Always shut off air supply, relieve hose of air pressure and disconnect tool from air supply when changing accessories.
- Avoid injury by cutting or severing: avoid contact with the saw blade or cutter whenever the air supply is connected to the tool. Wear protective equipment such as gloves, apron and helmet.
- Cutting with these tools will create sharp edges. Wear gloves to protect hands.
- Cutting edges and saw blades can become hot during use. Do not touch.
- Never force the tool to cut faster or through heavier gauge material than rated capacity.
- Ensure that the workpiece is properly supported.

### ⚠ Workplace hazards

- Slip/Trip/Fall is a major cause of serious injury or death. Be aware of excess hose left on the walking or work surface.
- High sound levels can cause permanent hearing loss. Use hearing protection as recommended by your employer or occupational health and safety regulations.
- Maintain a balanced body position and secure footing.
- Repetitive work motions, awkward positions and exposure to vibration can be harmful to hands and arms. If numbness, tingling, pain or whitening of the skin occurs, stop using tool and consult a physician.
- Avoid inhaling dust or handling debris from the work process which can be harmful to your health. Use dust extraction and wear respiratory protective equipment when working with materials which produce airborne particles.
- Some dust created by power sanding, sawing, grinding, drilling and other construction activities contains chemicals known to the State of California to cause cancer and birth defects or other reproductive harm. Some examples of these chemicals are:
  - Lead from lead based paints
  - Crystalline silica bricks and cement and other masonry products
  - Arsenic and chromium from chemically-treated rubber.Your risk from these exposures varies, depending on how often you do this type of work. To reduce your exposure to these chemicals: work in a well ventilated area, and work with approved safety equipment, such as dust masks that are specially designed to filter out microscopic particles.
- Proceed with care in unfamiliar surroundings. Be aware of potential hazards created by your work activity. This tool is not insulated for coming into contact with electric power sources.
- This tool is not recommended for use in explosive atmospheres.

- (4) declare that the product(s): **PNEUMATIC RECIPROCATING SAW & FILER**
- (5) Machine type(s) :  
(Fr) type(s)

(6) Origin of the product	<b>Chicago Pneumatic Brand</b>
<b>Taiwan</b>	<b>CP7900, CP7901, CP7901K</b>
<b>Japan</b>	<b>CP881</b>
(6) Origin of the product	<b>RediPower Brand</b>
<b>Taiwan</b>	<b>RP9881</b>
<b>Japan</b>	<b>RP9882</b>

Serial # : see on tool document

- (7) is in conformity with the requirements of the council Directives on the approximation of the laws of the Member States relating :
- (8) to "**Machinery**" 2006/42/EC (17/05/2006)

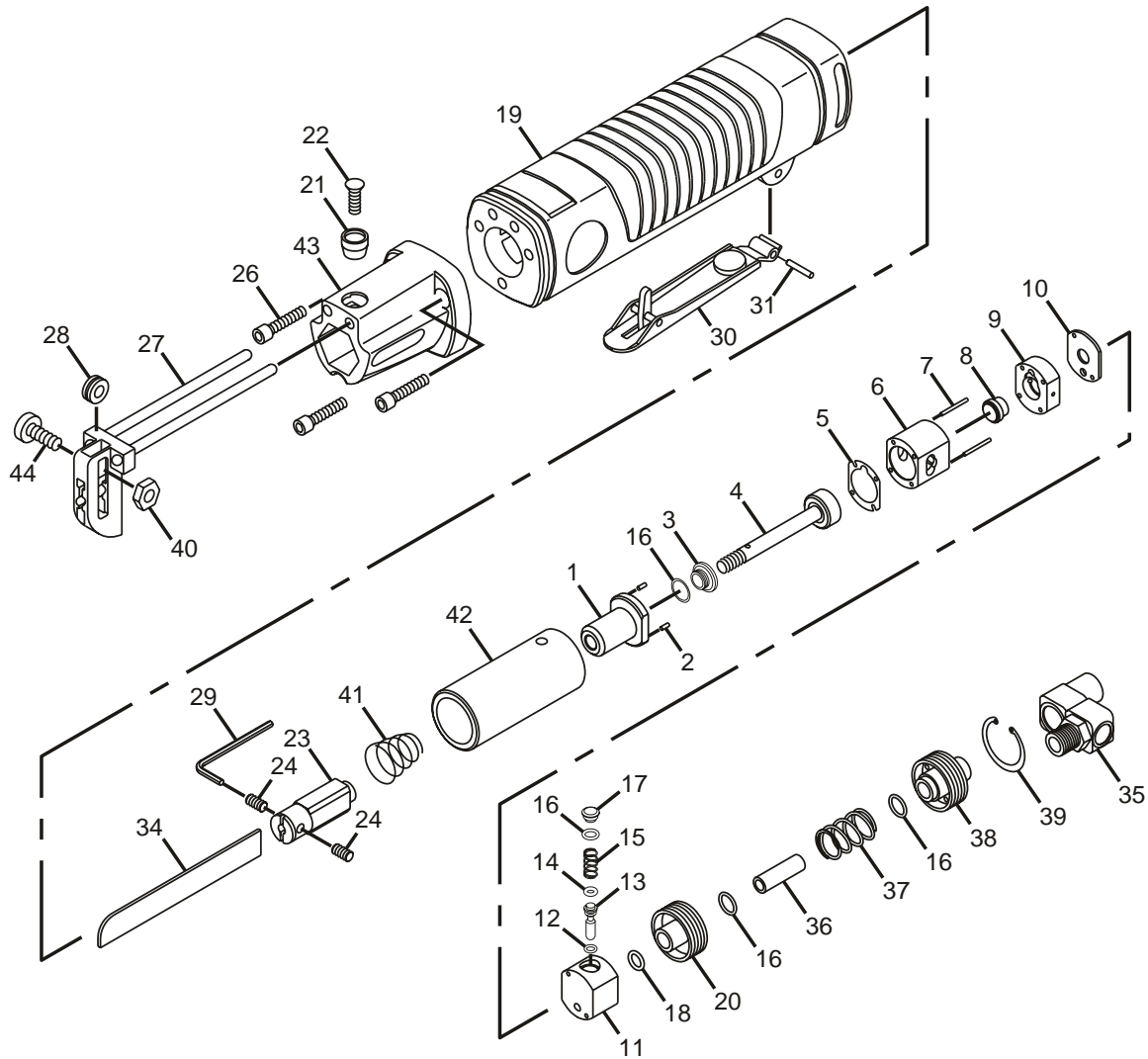
(11) applicable harmonised standard(s) : ISO 11148-12 : 2012 (E)

(12) NAME and POSITION of issuer :

**Bruno BLANCHET**  
**( General Manager)**




(13) Place & Date : Saint-Herblain, **18/02/2013**



<i>Index No.</i>	<i>Part No.</i>	<i>Description</i>	<i>No. Req'd.</i>	<i>Index No.</i>	<i>Part No.</i>	<i>Description</i>	<i>No. Req'd.</i>
1	CA145052	Cylinder Head Assembly	1	26	8940158408	Screw	3
2	CA145053	Pin-Dowel	2	27	8940158409	Guard-Blade	1
3	CA145054	Bumper	1	28	8940158410	Guide Wheel	1
4	8940169021	Piston (Incl: Index No.3)	1	29	CA145080	Wrench-Hex	1
5	CA145056	Gasket	1	30	8940158411	Lever-Throttle	1
6	CA145057	Cylinder	1	31	CA145082	Spring Pin	1
7	CA145058	Pin-Dowel	2	34	8940158775	Blade-Saw (18T)(5)	1
8	CA145059	Valve	1		8940158776	Blade-Saw (24T)(5)	1
9	CA145060	Valve-Assembly (Incl: Index No.8)	1		8940158777	Blade-Saw (32T)(5)	1
10	CA145061	Seat Valve	1	35	8940158412	Universal Swivel Air Inlet Joint	1
11	8940158401	Body-Throttle Valve	1	36	8940158413	Connecting Tube	1
12	CA145063	O-Ring	1	37	8940158414	Spring	1
13	8940158402	Stem-Throttle Valve	1	38	8940158415	Air Inlet	1
14	CA145065	O-Ring	1	39	8940158416	Retaining Ring	1
15	8940158403	Spring-Throttle Valve	1	40	8940158417	Nylon Nut	1
16	CA145067	O-Ring	1	41	8940158418	Shock Absorbent Spring	1
17	CA145068	Cap-Throttle Valve	4	42	8940158419	Main Liner	1
18	8940158337	Rubber Washer	1	43	8940158420	Front Head	1
19	8940158404	Housing-Motor	1	44	8940158421	Screw	1
20	8940158405	Bushing-Air Inlet Assembly (Incl: 8940158366 Muffler Cap, 8940158367 Muffler)	1		8940158363	Decal-Warning Safety (Not Shown)	1
21	8940158406	Spacer	1				
22	8940158407	Screw	1				
23	CA145074	Holder-Blade	1				
24	CA145075	Set-Screw	2				

	377713	SAFETY INSTRUCTIONS
	8940158422	OPERATOR'S MANUAL
	8940168965	EC DECLARATION