

Operator's Manual



CP7500D **2" Angle Grinder** **2" Cut-off Tool**

Model "P"

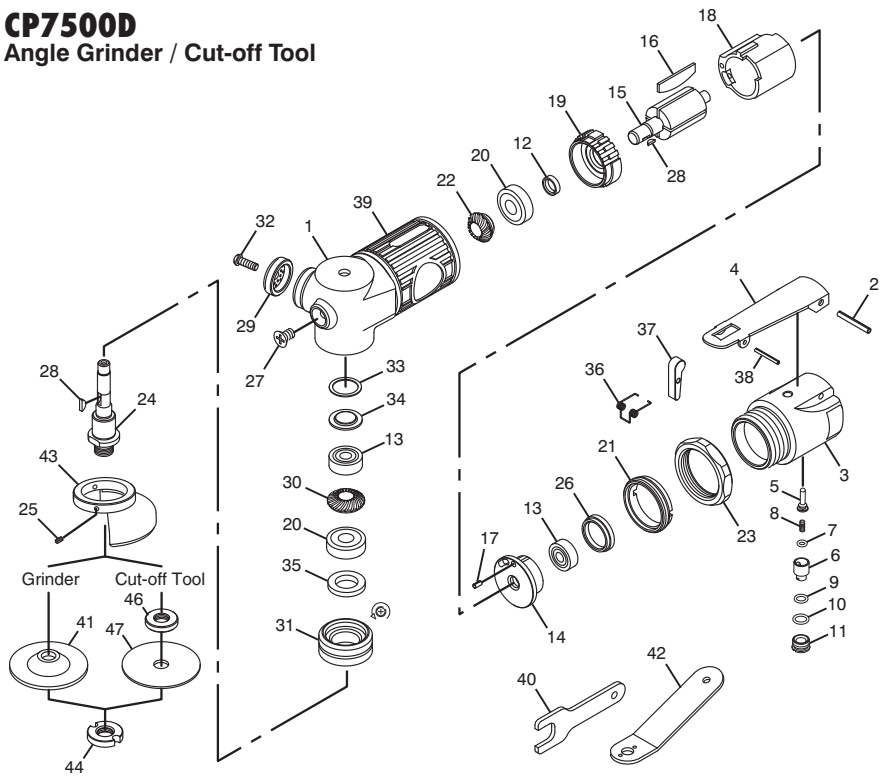


⚠ WARNING

To reduce risk of injury, everyone using, installing, repairing, maintaining, changing accessories on, or working near this tool must read and understand these instructions before performing any such task.

CP7500D

Angle Grinder / Cut-off Tool



Index No.	Part No.	Description	No. Req'd.	Index No.	Part No.	Description	No. Req'd.
1	8940162727	Housing	1	29	8940162748	Exhaust Cover	1
2	CA144787	Spring Pin	1	30	8940162749	Bevel Gear	1
3	8940162728	Valve Body	1	31	8940162750	Lock Nut	1
4	CA144788	Lever	1	32	8940162751	Screw	1
5	8940162729	Valve Stem	1	33	8940162752	Packing	1
6	8940162730	Adjust Valve	1	34	8940162753	Bearing Cover	1
7	KF131709	O-Ring	1	35	8940162754	Seal	1
8	8940162731	Spring	1	36	8940162755	Spring	1
9	8940162106	O-Ring	1	37	8940162756	Lever Bar	1
10	CA158057	O-Ring	1	38	8940162757	Spring Pin	1
11	8940162732	Throttle Valve Plug	1	39	8940162758	Rubber Grip	1
12	CA158069	Spacer	1	40	8940162759	Spanner	1
13	8940162733	Ball Bearing	2		See	2" Grinding Wheel 60 Grit	1
14	8940162734	Rear End Plate	1	41	Accessories Available	2" Grinding Wheel 80 Grit (5 pcs)	1
15	8940162735	Rotor	1		Available	2" Grinding Wheel 120 Grit	1
16	8940162736	Rotor Blade (4)	1	42	8940164485	Pin Wrench	1
17	8940162737	Spring Pin	1	43	8940162764	Wheel Guard	1
18	8940162738	Cylinder	1	44	8940162765	Nut	1
19	8940162739	Front End Plate	1	46	8940164487	Spacer	1
20	CA144800	Ball Bearing	2		See	2" Cutting Wheel	1
21	8940162740	Lock Nut	1	47	Accessories Available	Available	1
22	8940162741	Pinion Gear	1				
23	8940162742	Lock Ring	1				
24	8940164491	Spindle	1				
25	8940162744	Screw	3				
26	8940162745	Cap	1				
27	8940162746	Screw	1				
28	8940162747	Key	2				

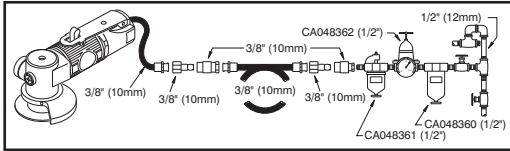
Accessories
 8940162768 - 2" Grinding Wheel 60 Grit (5 pcs)
 8940162769 - 2" Grinding Wheel 80 Grit (5 pcs)
 8940162770 - 2" Grinding Wheel 120 Grit (5 pcs)
 8940164490 - 2" Cutting Wheel (5 pcs)

CP7500D Angle Grinder / Cut-off Tool

INSTRUCTION MANUAL

Air Supply Requirements

1. Supply tool with 90 psig (6.2 bar) of clean, dry air. Higher pressure drastically reduces tool life.
2. Connect tool to air line using pipe, hose, and fitting sizes shown in the diagram.



Lubrication

1. Motor - Use an air line lubricator with SAE #10 oil, adjusted to two (2) drops per minute. If an air line lubricator cannot be used, add air motor oil to the inlet once a day.
2. Gears - Remove screw (Index no. 27). Use grease gun C098689 with Mobilux EP-2 or equal grease. Re-install screw (Index no. 27).

Maintenance

1. Disassemble and inspect air motor every three (3) months if the tool is used every day. Replace damaged or worn parts.
2. High wear parts are underlined in the parts list.
3. Recommended accessories:

8940162768

Grinding Wheel 60 Grit (set of 5)

8940162769

Grinding Wheel 80 Grit (set of 5)

8940162770

Grinding Wheel 120 Grit (set of 5)

8940164490

Cutting Wheel (set of 5)

Copyright 2007, Chicago Pneumatic Tool Co. LLC

All rights reserved. Any unauthorized use or copying of the contents or part thereof is prohibited. This applies in particular to trademarks, model denominations, part numbers and drawings. Use only authorized parts. Any damage or malfunction caused by the use of unauthorized parts is not covered by Warranty or Product Liability.

EC DECLARATION OF CONFORMITY

We, Chicago Pneumatic Tool Co., declare under our sole responsibility that the product to which this declaration relates, is in conformity with the requirements of the Council Directive of June 1998 on the approximation of the laws of the Member States relating to machinery (98/37/EC).

Machine Name CP7500D 2" Angle Grinder / Cut-off Tool

Machine Type Power tool equipped with 3/8"-24 spindle for use with various grinding and cutting wheels - No other use is permitted.

Serial No. Tools with No. 06001P or higher **Technical Data**

2" (50.8 mm) Grinding or cutting wheel

Free Speed 22,000 RPM

Air pressure 90 psi (6.2 bar)

Harmonized Standards Applied EN792-7

National Standards Applied ISO 8662-4(Grinder),

ISO 8662-12(Cut-Off Tool), ISO 15744-2002

Name And Position Of Issuer Stéphane

Rakotoarivelo, General Manager

Signature Of Issuer 

Date Of Issue October 15, 2007

Noise & Vibration Declaration*

Sound pressure level 79 dB(A) uncertainty 3 dB(A), in accordance with ISO 15744-2002. For sound power, add 11 dB(A).

For use as a Grinder

Vibration value 6.5 m/s², re. ISO 8662-4.

For use as a Cut-off Tool

Vibration value 5.35 m/s², re. ISO 8662-12.

*These declared values were obtained by laboratory type testing in compliance with the stated standards and are not adequate for use in risk assessments. Values measured in individual work places may be higher than the declared values. The actual exposure values and risk of harm experienced by an individual user are unique and depend upon the way the user works, the workpiece and the workstation design, as well as upon the exposure time and the physical condition of the user. We, Chicago Pneumatic, cannot be held liable for the consequences of using the declared values, instead of values reflecting the actual exposure, in an individual risk assessment in a work place situation over which we have no control.



WARNING

To reduce risk of injury, everyone using, installing, repairing, maintaining, changing accessories on, or working near this tool must read and understand these instructions before performing any such task.

SAFETY INSTRUCTIONS

• DO NOT DISCARD - GIVE TO USER

- Our goal is to produce tools that help you work safely and efficiently. The most important safety device for this or any tool is YOU. Your care and good judgement are the best protection against injury. All possible hazards cannot be covered here, but we have tried to highlight some of the important ones.
- Only qualified and trained operators should install, adjust or use this power tool.
- This tool and its accessories must not be modified in any way.
- Do not use this tool if it has been damaged.
- If the rated speed, operating pressure or hazard warning signs on the tool cease to be legible or become detached, replace without delay.
- Always wear impact-resistant eye and face protection when involved with or near the operation, repair or maintenance of the tool or changing accessories on the tool.
- Be sure all others in the area are wearing impact-resistant eye and face protection.
- Even small projectiles can injure eyes and cause blindness.
- A grinding wheel that bursts can cause very serious injury or death.
- Daily measure the air grinder speed with a tachometer to make sure that it is not greater than the RPM marked on the grinding wheel.
- Never use a grinding wheel marked with a speed lower than the air grinder speed.
- Ensure that the abrasive is securely clamped to the grinder using the tools provided.

⚠ Air supply and connection hazards

- Air under pressure can cause severe injury.
- Always shut off air supply, drain hose of air pressure and disconnect tool from air supply when not in use, before changing accessories or when making repairs.
- Never direct air at yourself or anyone else.
- Whipping hoses can cause severe injury. Always check for damaged or loose hoses and fittings.
- Do not use quick disconnect couplings at tool. See instructions for correct set up.
- Whenever universal twist couplings are used, lock pins must be installed.
- Do not exceed maximum air pressure of 6.3 bar / 90 psig, or as stated on tool nameplate.

⚠ Wheel guard usage

- Always use the recommended wheel guard to reduce the risk of injury from broken grinding wheel parts.
- If a guard has withstood a wheel breakage do not continue to use it. It may be damaged.
- Position the guard between the grinding wheel and the operator.
- Use barriers to protect others from wheel fragments and grinding sparks.

⚠ Entanglement hazards

- Keep away from rotating drive spindle and abrasive. Rotation may continue for several seconds after the throttle has been released. Do not lay the tool down until rotation has stopped.
- Choking, scalping and / or lacerations can occur if loose clothing, gloves, jewellery, neck ware and hair are not kept away from tool and accessories.

⚠ Projectile hazards

- Failure of the accessory or abrasive, or of the workpiece, can generate high-velocity projectiles. Even small projectiles can injure eyes and cause blindness.

⚠ Accessory hazards

- Always shut off air supply, relieve hose of air pressure and disconnect tool from air supply when changing accessories.
- Use only recommended sizes and types of abrasives.
- Do not use chipped or cracked wheels, or wheels which may have been dropped.
- Correct grinding wheel mounting is necessary to prevent injury from broken wheels.
- Avoid mismatch between UNC and metric threads.
- Grinding wheels should be a free fit on the spindle to prevent stress at the hole. Do not use reducing bushes to fit large hole grinding wheels.
- Use only wheel collars that come with the grinder for mounting the grinding wheel. Flat washers or other adapters may over stress the wheel. Always use heavy paper blotter discs between the wheel collars and the grinding wheel.
- If several flanges are supplied to fit different sizes and types of abrasive, always fit the correct flange(s) for the abrasive being used.
- When mounting cups, cones or plugs with threaded holes, the spindle end must not contact the bottom of the hole as it will stress the abrasive.
- Tighten the wheel on the spindle to prevent spin off when the air grinder is turned off.
- Before grinding, test grinding wheel by briefly running tool at full throttle. Be sure to use a barrier (such as under a heavy work table) to stop any possible broken wheel parts. Stop immediately if vibration is excessive.

⚠ Operating hazards

- Operators and maintenance personnel must be physically able to handle the bulk, weight and power of the tool.
- Hold the tool correctly: be ready to counteract normal or sudden movements – have both hands available.
- You can be cut or burned if you come into contact with the accessory, grinding sparks or the work surface. Avoid contact and wear protective equipment such as gloves, apron and helmet.
- Avoid wheel jamming when cutting-off. Support the workpiece on both sides of the cut line to prevent the wheel becoming trapped. If jamming occurs, release the throttle and ease the wheel free. Check the wheel is undamaged and properly secured before continuing.
- Never use cutting-off wheels for side grinding.
- Grinding sparks can ignite clothing and cause severe burns. Ensure sparks do not land on clothing. Wear fire-retardant clothing and have a bucket of water nearby.

- There is a risk of electrostatic discharge if used on plastic and other non-conductive materials.

⚠ Repetitive motion hazards

- When using a power tool to perform work-related activities, the operator might experience discomfort in the hands, arms, shoulders, neck, or other parts of the body.
- Adopt a comfortable posture whilst maintaining secure footing and avoiding awkward or off-balance postures. Changing posture during extended tasks can help avoid discomfort and fatigue.
- Do not ignore symptoms such as persistent or recurring discomfort, pain, throbbing, aching, tingling, numbness, burning sensation, or stiffness. Stop using the tool, tell your employer and consult a physician.

⚠ Noise and vibration hazards

- High sound levels can cause permanent hearing loss and other problems such as tinnitus. Use hearing protection as recommended by your employer or occupational health and safety regulations.
- Exposure to vibration can cause disabling damage to the nerves and blood supply of the hands and arms. Wear warm clothing and keep your hands warm and dry. If numbness, tingling, pain or whitening of the skin occurs, stop using tool, tell your employer and consult a physician.
- Hold the tool in a light but safe grip because the risk from vibration is generally greater when the grip force is higher. Where possible support the weight of the tool with a balancer.
- To prevent unnecessary increases in noise and vibration levels:
 - Operate and maintain the tool, and select, maintain and replace the accessories and consumables, in accordance with this instruction manual;
 - Use damping materials to prevent workpieces from "ringing".

⚠ Workplace hazards

- Slip/Trip/Fall is a major cause of serious injury or death. Be aware of excess hose left on the walking or work surface.
- High sound levels can cause permanent hearing loss. Use hearing protection as recommended by your employer or occupational health and safety regulations.
- Repetitive work motions, awkward positions and exposure to vibration can be harmful to hands and arms. If numbness, tingling, pain or whitening of the skin occurs, stop using tool and consult a physician.
- Avoid inhaling dust or handling debris from the work process which can be harmful to your health. Use dust extraction and wear respiratory protective equipment when working with materials which produce airborne particles.
- Some dust created by power sanding, sawing, grinding, drilling and other construction activities contains chemicals known to the State of California to cause cancer and birth defects or other reproductive harm. Some examples of these chemicals are:
 - Lead from lead based paints
 - Crystalline silica bricks and cement and other masonry products
 - Arsenic and chromium from chemically-treated rubber.Your risk from these exposures varies, depending on how often you do this type of work. To reduce your exposure to these chemicals: work in a well ventilated area, and work with approved safety equipment, such as dust masks that are specially designed to filter out microscopic particles.
- Proceed with care in unfamiliar surroundings. Hidden hazards may exist, such as electricity or other utility lines.
- Potentially explosive atmospheres can be caused by dust and fumes resulting from sanding or grinding. Always use dust extraction or suppression systems which are suitable for the material being processed.
- This tool is not intended for use in potentially explosive atmospheres and is not insulated from coming into contact with electric power.

(4) declare that the
product(s):

PNEUMATIC GRINDER / CUT-OFF TOOL

(5) Machine type(s) :

CP9120CR
CP9120CRN
CP9121AR
CP9121BR
CP9121CR
CP9122BR
CP9122CR
CP9123
CP7500D
CP7500DK

Serial No: From 00001 to 99999
--

(6) Origin of the product : Taiwan

(7) is in conformity with the requirements of the council Directives on the approximation of the laws of the Member States relating :

(8) to "**Machinery**" : **2006/42/EC (17/05/2006)**

(11) applicable harmonised
standard(s) :

EN ISO11148-7:2012

(12) NAME and POSITION of issuer :

**Bruno BLANCHET
(General Manager)**

(13) Place & Date : Saint-Herblain, **10/10/2012**

