

Operator's Manual



CP734H Series Impact Wrench

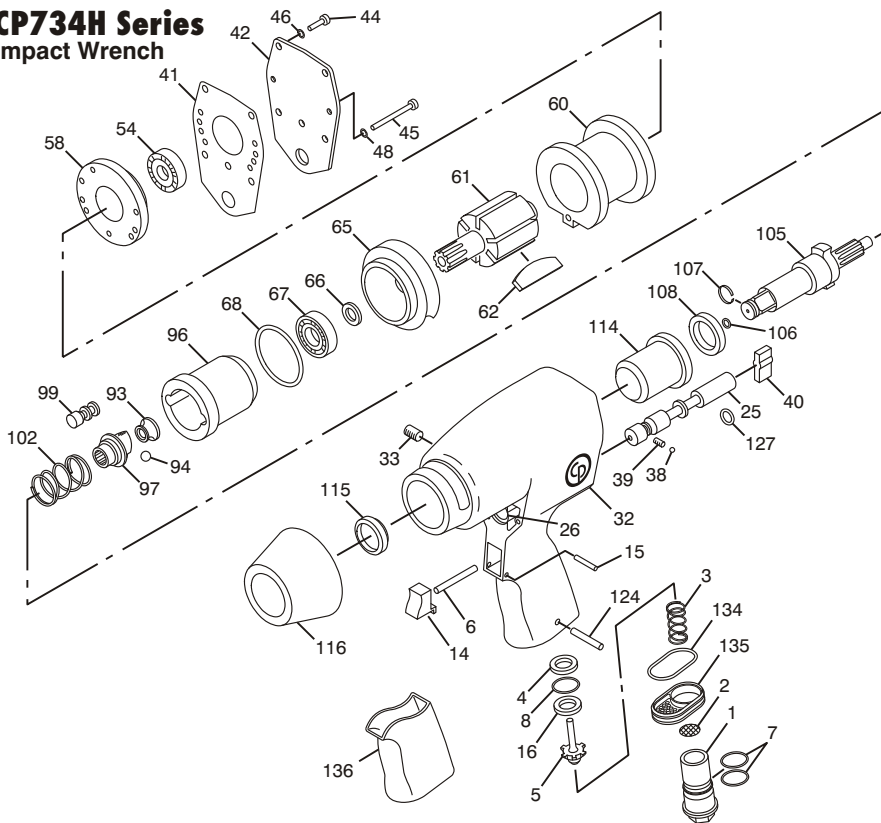
1/2" Sq. Dr. Model "K"



⚠ WARNING

To reduce risk of injury, everyone using, installing, repairing, maintaining, changing accessories on, or working near this tool must read and understand these instructions before performing any such task.

CP734H Series Impact Wrench

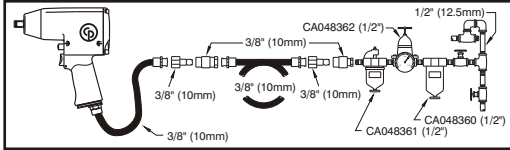


Index No.	Part No.	Description	No. Req'd.	Index No.	Part No.	Description	No. Req'd.
1	CA147022	Bushing-Air Inlet (1/4 in. NPT)	1	61	CA147024	Rotor	1
2	CA059037	Strainer-Air	1	62	KF131274	Blade Set-Rotor (6)	1
3	CA142464	Spring-Throttle	1	65	CA099903	Plate-Front End	1
4	CA149085	Spacer	1	66	CA087513	Seal	1
5	CA142460	Valve-Throttle	1	67	C066342	Bearing-Ball	1
6	CA144831	Pin-Throttle	1	68	CA045206	O-Ring (-032)	1
7	C105693	O-Ring (-017)	2	93	KF144074	Pilot	1
8	CA149096	O-Ring	1	94	CO11046	Ball-Steel .312" dia.	1
14	CA147017	Trigger	1	96	KF144076	Cage-Hammer	1
15	CA144836	Pin-Roll (3/32)	1	97	CA045906	Cam-Hammer	1
16	C139037	Seat-Throttle	1	99	CA045902	Pin	2
25	CA147016	Valve-Reverse	1	102	KF144075	Spring	1
26	CA147015	Bushing-Reverse Valve	1	105	CA045907	Shank-Anvil (1/2 in. Sq. Dr.) (Incl: Index Nos. 106, 107)	1
32	CA147012	Housing-Motor (Incl: Index Nos. 33)	1		CA046723	Shank-Anvil (1/2 in. Sq. Dr.) (2 in. longer)	1
33	S089953	Plug-Pipe (1/16 in. NPT)	1				
38	S008613	Ball Steel .156" dia.	1	106	P083071	O-Ring (-011)	1
39	CA147021	Spring-Detent	1	107	CA088097	Retainer-Socket	1
40	CA147019	Lever-Regulator	1	108	KF129046	Spacer	1
41	CA147020	Gasket	1	114	CA099916	Bushing	1
42	CA147013	Cover-Housing	1	115	CA088095	Seal-Oil	1
44	CA088193	Screw-Hex Socket Head Cap	4	116	KF129085	Shield	1
45	KF129084	Screw	3	124	R086991	Pin-Roll .188 x 1.00	1
46	S091250	Lockwasher	4	127	CA147018	O-Ring	1
48	S008020	Lockwasher	3	134	CA148528	Gasket-Exhaust Deflector	1
54	C075878	Bearing-Ball	1	135	CA147023	Deflector-Exhaust	1
58	CA099904	Plate-Rear End	1	136	8940158432	Grip	1
60	CA147025	Liner	1				

INSTRUCTION MANUAL

Air Supply Requirements

1. Supply tool with 90 psig (6.2 bar) of clean, dry air. Higher pressure drastically reduces tool life.
2. Connect tool to air line using pipe, hose, and fitting sizes shown in the diagram.



Lubrication

1. Use an air line lubricator with SAE #10 oil, adjusted to two (2) drops per minute. If an air line lubricator cannot be used, add air motor oil to the inlet once a day.
2. Check clutch oil once each month. Use 3/4 oz. (22ml) of SAE#30 oil or equivalent.

Operation

This impact wrench is equipped with a regulator to enable adjustment of output power. Turn the regulator knob counter-clockwise for maximum power, clockwise to reduce power.

Maintenance

1. Disassemble and inspect air motor and impacting clutch every three (3) months if the tool is used every day. Replace damaged or worn parts.
2. High wear parts are underlined in the parts list.
3. To keep downtime to a minimum, the following service kits are recommended:

Tune-Up Kit CA147716

(Incl: 7, 41, 62, 66, 68, 106, 107, 115 & 127)

Repair Kit CA147717

(Incl: 7, 41, 62, 66, 68, 94, 99, 102, 105, 106, 107, 115 & 127)

EC DECLARATION OF CONFORMITY

We, Chicago Pneumatic Tool Company, declare under our sole responsibility that the product to which this declaration relates, is in conformity with the requirements of the Council Directive of June 1998 on the approximation of the laws of the Member States relating to machinery (98/37/EC).

Machine Name CP734H Series Impact Wrench
Machine Type Assembly Power Tool for Threaded Fasteners - No other use is permitted.

Serial No. Tools with No. 95275K or higher **Technical Data**

1/2" Sq. Dr.

Air pressure 90 psi (6.2 bar)

Harmonized Standards Applied EN292

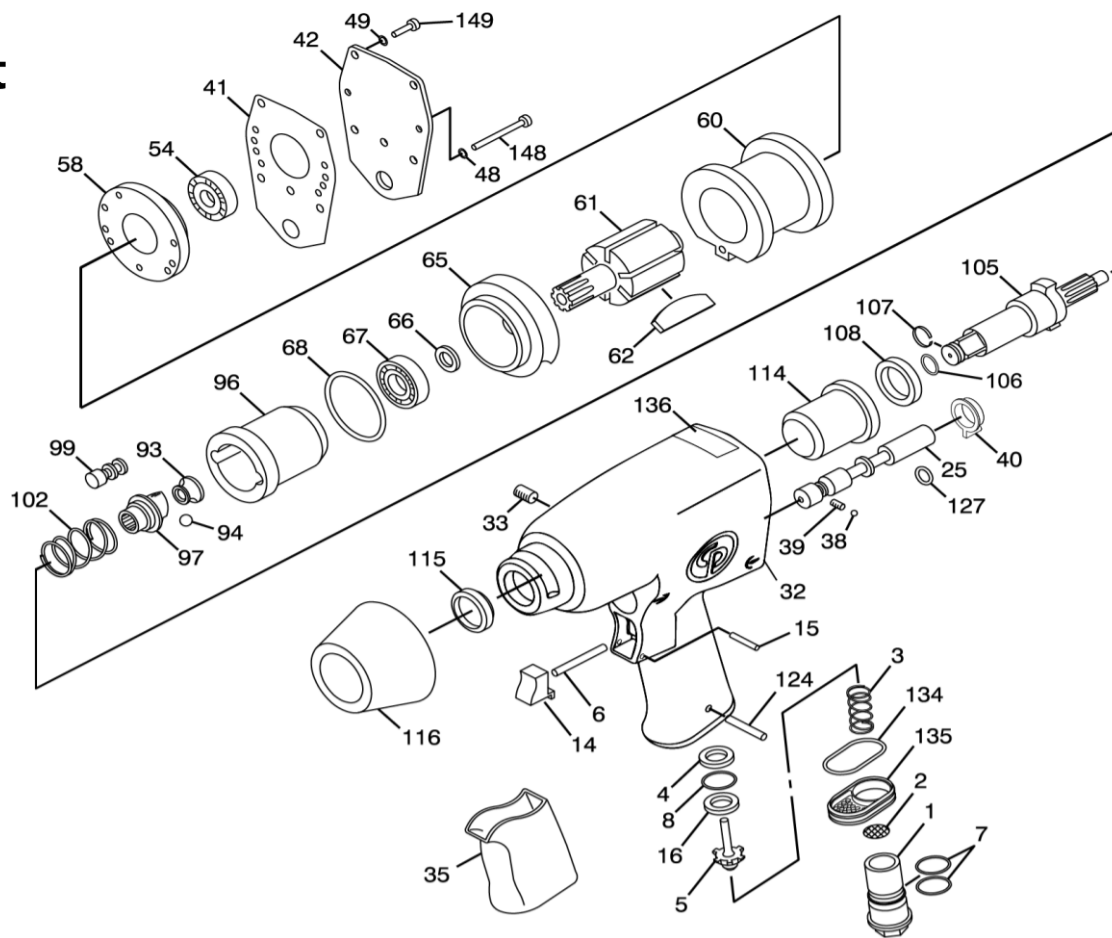
National Standards Applied ISO 8662-7, ISO 15744-2002

Noise & Vibration Declaration*


Sound pressure level 93 dB(A), uncertainty 3 dB(A), in accordance with ISO 15744-2002. For sound power, add 11 dB(A).

Vibration value 3.4 m/s², re. ISO 8662-7.

*These declared values were obtained by laboratory type testing in compliance with the stated standards and are not adequate for use in risk assessments. Values measured in individual work places may be higher than the declared values. The actual exposure values and risk of harm experienced by an individual user are unique and depend upon the way the user works, the workpiece and the workstation design, as well as upon the exposure time and the physical condition of the user. We, Chicago Pneumatic, cannot be held liable for the consequences of using the declared values, instead of values reflecting the actual exposure, in an individual risk assessment in a work place situation over which we have no control.


Assembly Instructions

Item #	Tightening torque	Dir.	Glue / comment
149 - 32	4.8 ft.lb - 6.5 N.m	↻	
33 - 32	3.7 ft.lb - 5 N.m	↻	3/4 oz. (22ml) of oil in clutch
148 - 65	2.45 ft.lb - 3.3 N.m	↻	final torque after motor tuning

	6159948710	Safety instructions
	8940174788	Operator's Manual
	CA155779	Warning Label

Index No	Part No	Description	Qty
32	8940174786	Hsg-Motor	1
35	8940158432	Handle-cover	1
41	CA147020	Gasket motor housing	1
42	CA147013	Cover-Motor Housing	1
60	CA147025	Liner	1
61	CA147024	Rotor	1
62	KF131274	Set-Rotor Blade (set of 6)	1
96	KF144076	Cage-Clutch	1
105	CA045907	Anvil CP734H (incl. 106, 107)	1
	CA046723	Anvil CP734H-2 (incl. 106, 107)	1
108	KF129046	Spacer	1
114	CA099916	Bushing-Clutch	1
115	CA088095	Seal-Oil	1
116	KF129085	Shield-Nose	1
136	CA155779	Warning Label	1
A	8940168242	Inlet Kit	
1		Bushing-Air Inlet	1
2		Straine-Air	1
7		O-Ring	2
124		Pin Roll	1
B	8940173359	Exhaust Kit	
134		Gasket Exhaust Deflector	1
135		Deflector-Exhaust	1
C	8940168243	Throttle Kit	
3		Spring Throttle	1
4		Spacer	1
5		Valve Throttle	1
8		O-Ring	1
16		Seat Throttle	1
D	8940168244	Reverse Valve Kit	
25		Valve-Reverse	1
38		Ball Steel	1
39	CA147021	Spring-Detent	1
40		Lever Regulator	1
127		O-Ring	1

Index No	Part No	Description	Qty
E	8940168245	Trigger Kit	
6		Pin Throttle	1
14		Trigger	1
15		Pin Roll	1
F	8940168246	Screw Hex / Washer kit	
48		Lockwasher	3
49		Lockwasher	4
148		Screw	3
149		Screw	4
G	8940168248	Rear End Plate kit	
54	C075878	Bearing-Ball	1
58		Plate-Rear End	1
H	8940168249	Front End Plate kit	
65		Plate-Front End	1
66		Seal-Oil	1
67	C066342	Bearing-Ball	1
68		O-ring	1
I	8940168250	Cam kit	
93		Pilot	1
94		Ball-Steel	1
97		Cam	1
J	8940168252	Pin kit	
99		Pin	2
102		Spring	1
K	8940170244	Anvil-Retainer kit	
106		O-ring	1
107		Retainer-Socket	1
O	8940173361	SMALL PARTS KIT	
Incl. 2, 15, 33, 38, 39, 43, 124			
P	CA147716	TUNE UP KIT	
Incl. Index No. 7, 8, 41, 62, 66, 68, 106, 107, 115, 127			

Recommended Accessories
Clutch Oil

(for clutch lubrication)

SAE #30

Protecto-lube Oil

(for cleaning motor parts)

CA149661 (4 oz - 0.12 L)

CA000046 (20 oz - 0.59 L)


Airoilene Oil

(for air lubrication)

P089507 (1 gal - 3.8 L)





⚠ WARNING

To reduce risk of injury, everyone using, installing, repairing, maintaining, changing accessories on, or working near this tool must read and understand these instructions before performing any such task.

The goal of Chicago Pneumatic is to produce tools that help you work safely and efficiently. The most important safety device for this or any tool is YOU. Your care and good judgment are the best protection against injury. All possible hazards cannot be covered here, but we have tried to highlight some of the important ones.

Air Supply And Connection Hazards

- ⚠ Air under pressure can cause severe injury.
- ⚠ Always shut off air supply, drain hose of air pressure and disconnect tool from air supply when not in use, before changing accessories or when making repairs.
- ⚠ Never direct air at yourself or anyone else.
- ⚠ Whipping hoses can cause serious injury. Always check for damaged or loose hoses and fittings.
- ⚠ Do not use quick disconnect couplings at tool. See instructions for correct set-up.
- ⚠ Whenever universal twist couplings are used, lock pins must be installed.
- ⚠ Do not exceed maximum air pressure of 90 psi (6.2 bar) or as stated on tool nameplate.

Entanglement Hazards

- ⚠ Keep away from rotating drive.
- ⚠ Do not wear jewelry or loose clothing.
- ⚠ Choking can occur if neckwear is not kept away from tool and accessories.
- ⚠ Scalping can occur if hair is not kept away from tool and accessories.
- ⚠ Avoid direct contact with accessories during and after use. Gloves will reduce the risk of cuts or burns.
- ⚠ Use only proper accessory retainers (see parts list). Use deep sockets wherever possible.

Projectile Hazards

- ⚠ Always wear impact-resistant eye and face protection when involved with or near the operation, repair or maintenance of the tool or changing accessories on the tool.
- ⚠ Be sure all others in the area are wearing impact-resistant eye and face protection.
- ⚠ Even small projectiles can injure eyes and cause blindness.
- ⚠ Use only impact wrench sockets and accessories in good condition. Sockets in poor condition or hand sockets and accessories used with impact wrenches can shatter.
- ⚠ Always use the simplest hook-up possible. Long, springy extension bars and adapters absorb impact power and could break. Use deep sockets wherever possible.

- ⚠ Never operate the tool off of the work. It may run too fast and cause the accessory to be thrown off the tool.
- ⚠ Serious injury can result from over-torqued or under-torqued fasteners, which can break, or loosen and separate. Released assemblies can become projectiles. Assemblies requiring a specific torque must be checked using a torque meter.

Note: So-called "click" torque wrenches do not check for potentially dangerous over-torque conditions.

Workplace Hazards

- Beware of excess hose left on the walking or work surface.
 - ⚠ High sound levels can cause permanent hearing loss. Use hearing protection as recommended by your employer or OSHA regulation (see 29 CFR part 1910).
 - ⚠ Maintain a balanced body position and secure footing.
 - ⚠ Be in control of the throttle at all times. Do not get caught between the tool and the work.
 - ⚠ Repetitive work motions, awkward positions and exposure to vibration can be harmful to hands and arms. If numbness, tingling, pain or whitening of the skin occurs, stop using the tool and consult a physician.
 - ⚠ Avoid inhaling dust or handling debris from the work process which can be harmful to your health. Use dust extraction and wear respiratory protective equipment when working with materials which produce airborne particles.
 - ⚠ Proceed with care in unfamiliar surroundings. Be aware of potential hazards created by your work activity. This tool is not insulated for coming into contact with electric power sources.
 - ⚠ Some dust created by power sanding, sawing, grinding, drilling and other construction activities contains chemicals known to the State of California to cause cancer and birth defects or other reproductive harm. Some examples of these chemicals are:
 - Lead from lead based paints
 - Crystalline silica bricks and cement and other masonry products
 - And Arsenic and chromium from chemically-treated rubber
- Your risk from these exposures varies, depending on how often you do this type of work. To reduce your exposure to these chemicals: work in a well ventilated area, and work with approved safety equipment, such as dust masks that are specially designed to filter out microscopic particles.

Additional Safety Topics

- ⚠ This tool and its accessories must not be modified.
- ⚠ This tool is not recommended for use in explosive atmospheres.
- ⚠ Operators and maintenance personnel must be physically able to handle the bulk, weight and power of the tool.
- ⚠ For professional use only.

SAFETY INSTRUCTIONS

DO NOT DISCARD - GIVE TO USER

SAFETY INSTRUCTIONS

DO NOT DISCARD - GIVE TO USER

- Our goal is to produce tools that help you work safely and efficiently. The most important safety device for this or any tool is YOU. Your care and good judgment are the best protection against injury. All possible hazards cannot be covered here, but we have tried to highlight some of the important ones.
- Only qualified and trained operators should install, adjust or use this power tool.
- This tool and its accessories must not be modified in any way.
- Do not use this tool if it has been damaged.
- If the rated speed, operating pressure or hazard warning signs on the tool cease to be legible or become detached, replace without delay.

⚠ Air Supply And Connection Hazards

- Air under pressure can cause severe injury.
- Always shut off air supply, drain hose of air pressure and disconnect tool from air supply when not in use, before changing accessories or when making repair.
- Never direct air at yourself or anyone else
- Whipping hoses can cause serious injury. Always check for damaged or loose hoses and fittings.
- Do not use quick disconnect couplings at tool. See instructions for correct setup.
- Whenever universal twist couplings are used, lock pins must be installed.
- Do not exceed maximum air pressure of 90 psi/6.3 bar or as stated on tool nameplate.

⚠ Entanglement Hazards

- Keep away from rotating drive. Choking, scalping and / or lacerations can occur if loose clothing, gloves, jewellery, neck ware and hair are not kept away from tool and accessories.
- Gloves can become entangled with the rotating drive, causing severed or broken fingers.
- Rotating drive sockets and drive extensions can easily entangle rubber-coated or metal reinforced gloves.
- Do not wear loose-fitting gloves or gloves with cut or frayed fingers.
- Never hold the drive, socket or drive extension.

⚠ Projectile Hazards

- Always wear impact-resistant eye and face protection when involved with or near the operation, repair or maintenance of the tool or changing accessories on the tool.
- Be sure all others in the area are wearing impact-resistant eye and face protection. Even small projectiles can injure eyes and cause blindness.
- Serious injury can result from over-torqued or under-torqued fasteners, which can break, or loosen and separate. Released assemblies can become projectiles. Assemblies requiring a specific torque must be checked using a torque meter.

Note: So-called "click" torque wrenches do not check for potentially dangerous over-torque conditions.

- Use only impact wrench sockets and accessories in good condition. Sockets in poor condition or hand sockets and accessories used with impact wrenches can shatter.
- Never operate the tool off of the work. It may run too fast and cause the accessory to be thrown off the tool.
- Ensure that the workpiece is securely fixed.

⚠ Accessory hazards

- Use only proper accessory retainers (see parts list). Use deep sockets wherever possible.
- For tools using the pin and O-ring socket retention system, use the O-ring to retain the socket pin securely.
- Always use the simplest hook-up possible. Long, springy extension bars and adapters absorb impact power and could break. Use deep sockets wherever possible.

⚠ Operating hazards

- Operators and maintenance personnel must be physically able to handle the bulk, weight and power of the tool.
- Hold the tool correctly; be ready to counteract normal or sudden movements – have both hands available.
- Do not use with reduced air pressure or in a worn condition: the clutch may not operate, resulting in sudden rotation of the tool handle.
- Be in control of the throttle at all times. Do not get caught between the tool and the work.

⚠ Repetitive motion hazards

- When using a power tool to perform work-related activities, the operator might experience discomfort in the hands, arms, shoulders, neck, or other parts of the body.
- Adopt a comfortable posture whilst maintaining secure footing and avoiding awkward or offbalance postures. Changing posture during extended tasks can help avoid discomfort and fatigue.
- Do not ignore symptoms such as persistent or recurring discomfort, pain, throbbing, aching, tingling, numbness, burning sensation, or stiffness. Stop using the tool, tell your employer and consult a physician.

⚠ Noise and Vibration hazards

- High sound levels can cause permanent hearing loss and other problems such as tinnitus. Use hearing protection as recommended by your employer or occupational health and safety regulations.
- Exposure to vibration can cause disabling damage to the nerves and blood supply of the hands and arms. Wear warm clothing and keep your hands warm and dry. If numbness, tingling, pain or whitening of the skin occurs, stop using tool, tell your employer and consult a physician.
- Hold the tool in a light but safe grip because the risk from vibration is generally greater when the grip force is higher. Where possible use a suspension arm or fit a side handle.
- To prevent unnecessary increases in noise and vibration levels:
 - Operate and maintain the tool, and select, maintain and replace the accessories and consumables, in accordance with this instruction manual;
 - Do not use worn or ill-fitting screwdriver bits, sockets or extensions.
 - Do not touch sockets or accessories during impacting.

⚠ Workplace Hazards

- Slip/Trip/Fall is a major cause of serious injury or death. Be aware of excess hose left on the walking or work surface.
- Avoid inhaling dust or fumes or handling debris from the work process which can be harmful to your health (for example, cancer, birth defects, asthma and/or dermatitis). Use dust extraction and wear respiratory

protective equipment when working with materials which produce airborne particles.

- Some dust created by power sanding, sawing, grinding, drilling and other construction activities contains chemicals known to the State of California to cause cancer and birth defects or other reproductive harm. Some examples of these chemicals are:
 - Lead from lead based paints
 - Crystalline silica bricks and cement and other masonry products
 - And Arsenic and chromium from chemically- treated rubber

Your risk from these exposures varies, depending on how often you do this type of work. To reduce your exposure to these chemicals: work in a well ventilated area, and work with approved safety equipment, such as dust masks that are specially designed to filter out microscopic particles.

- Proceed with care in unfamiliar surroundings. Be aware of potential hazards created by your work activity. This tool is not insulated for coming into contact with electric power sources.
- This tool is not recommended for use in explosive atmospheres.

Impact wrench	Part n°	ISO 28927-2 (3 axis)		ISO 8662-7 (1 axis)	ISO 15744	
		a_{hd} m/s ²	K m/s ²	a_n m/s ²	L_{pA} dB(A)	L_{WA} dB(A)
Models						
CP719	T025366	2.7	1.3	<2.5	98	109
CP719Q	T025367					
CP721	T021963	4.7	3.3	4.9	87	98
CP724H	T025113	3.4	1.7	<2.5	93	104
CP726H	T025114	3.1	1.6	<2.5	93	104
CP7735	8941077350	4.9	1.6	3.9	96	107
CP7735Q	8941077351					
CP7735H	8941077352					
CP7735HQ	8941077353					
CP734H	T024351	7.2	3.3	3.4	93	104
CP734HK, CP734HKM						
CP772H, CP772HK, CP772HKM CP772H-6	T024598 T024757	6.1	2.3	4.9	96	107
CP796	T019799	18.2	3.8	13.0	101	111
CP897	T025379	12.1	4.1	7.5	101	111
CP897-6	T025368					
CP797	T019139	12.8	4.3	7.6	110	121
CP797-6	T013901					
CP797SP-6	T018653					
CP7778	8941077780	11.2	3.5	9.1	106	117
CP7778-6	8941077786	10,1	2,9	9,1	106	117
CP7778SP-6	8941077781					
CP7774	8941077740	13,7	4,9	8,7	100,9	111,9
CP7774-6	8941077746					
CP7775	8941077750	14,9	8,2	9,1	96	107
CP7775-6	8941077756					
CP7775SP-6	8941077751					
CP5000	T024585	8.5	2.6	8.9	103	113
CP7750	89401077520	6,5	1,9	4,4	100	111
CP7750-2	89401077522					
RP9521	6151909521	4.7	3.3	4.9	87	98
RP9540-B	6151902540	7.2	3.3	3.4	93	104
RP9560	6151909560	6.1	2.3	4.9	96	107

a_{hd}, a_n : Vibration levels

L_{pA} Sound pressure level

$K_{pA} = K_{WA} = 3dB$ Uncertainty



WARNING

To reduce risk of injury, everyone using, installing, repairing, maintaining, changing accessories on, or working near this tool must read and understand these instructions before performing any such task.