

Operator's Manual



CP7215, CP7225 & CP7255 Series **6" Random Orbital Sander**



⚠ WARNING

To reduce risk of injury, everyone using, installing, repairing, maintaining, changing accessories on, or working near this tool must read and understand these instructions before performing any such task.

CP7215, CP7225 & CP7255 Series

6" Random Orbital Sander

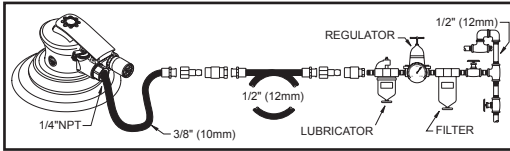
INSTRUCTION MANUAL

Machine Type

Power tool equipped with a flexible disc fitted with abrasive paper for sanding - No other use is permitted

Air Supply Requirements

1. Supply tool with 90 psig (6.3 bar) of clean, dry air. Higher pressure drastically reduces tool life.
2. Connect tool to air line using pipe, hose and fitting sizes shown in the diagram below.
3. Do not install a quick coupler directly into the sander throttle handle.



Lubrication

Use an air line lubricator with SAE #10 oil, adjusted to two drops per minute. If an air line lubricator cannot be used, add air motor oil to the inlet once a day.

Maintenance

1. Disassemble and inspect air motor and orbital assembly every three months if the tool is used every day. Replace damaged or worn parts.
2. High wear parts are underlined in the parts list.
3. To keep downtime to a minimum, the following service kits are recommended:

Tune-Up Kit

8940163459 (Incl: 7, 17, 19, 20, 23, 26, 33, 50)

ECO Change Motor Kits

(Incl: 13, 14, 15, 16, 17, 18, 19, 20, 21, 22, 23, 24, 25, 26, 27, 29, 30, 33, 34, 50)

ECO Change Motor

CP7215: 8940168374

CP7225: 8940168372

CP7255: 8940168373

Throttle Kit CP72 Series

8940168367 (Incl: 2, 3, 4, 5, 6)

Valve Seat Kit CP72 Series

8940168368 (Incl: 7, 8, 9)

Technical Data

Pad Diameter 6in. (150mm)

Free speed 12,000 RPM

Air pressure 90 psi (6.3 bar)

Spindle size 5/16"-24

Original Instructions

Copyright 2010, Chicago Pneumatic Tool Co. LLC

All rights reserved. Any unauthorized use or copying of the contents or part thereof is prohibited. This applies in particular to trademarks, model denominations, part numbers and drawings. Use only authorized parts. Any damage or malfunction caused by the use of unauthorized parts is not covered by Warranty or Product Liability.

Noise & Vibration Declaration

Sound pressure level 81 dB(A), uncertainty 3 dB(A), in accordance with EN ISO 15744. For sound power, add 11 dB(A).

Vibration value;

CP7225, CP7225E, CP7225SV, CP7225SVE, CP7225CV,

CP7225CVE: a < 2.5m/s²

CP7255, CP7255SV, CP7255CV: a = 4.1m/s², uncertainty k = 2.4m/s²

CP7255E, CP7255SVE, CP7255CVE: a = 3.3m/s², uncertainty k = 1.6m/s²

CP7215, CP7215E, CP7215SV, CP7215SVE, CP7215CV,

CP7215CVE: a = 4.9m/s², uncertainty k = 3.4m/s² re. ISO 28927-3.

Declaration of noise and vibration emission

All values are current as of the date of this publication.

These declared values were obtained by laboratory type testing in accordance with the stated standards and are suitable for comparison with the declared values of other tools tested in accordance with the same standards. These declared values are not adequate for use in risk assessments and values measured in individual work places may be higher. The actual exposure values and risk of harm experienced by an individual user are unique and depend upon the way the user works, the workpiece and the workstation design, as well upon the exposure time and the physical condition of the user.

We, Chicago Pneumatic, cannot be held liable for the consequences of using the declared values, instead of values reflecting the actual exposure, in an individual risk assessment in a work place situation over which we have no control.

This tool may cause hand-arm vibration syndrome if its use is not adequately managed.

We recommend a programme of health surveillance to detect early symptoms which may relate to noise or vibration exposure, so that management procedures can be modified to help prevent future impairment.



WARNING

To reduce risk of injury, everyone using, installing, repairing, maintaining, changing accessories on, or working near this tool must read and understand these instructions before performing any such task.

SAFETY INSTRUCTIONS

• DO NOT DISCARD - GIVE TO USER

- Our goal is to produce tools that help you work safely and efficiently. The most important safety device for this or any tool is YOU. Your care and good judgement are the best protection against injury. All possible hazards cannot be covered here, but we have tried to highlight some of the important ones.
- Only qualified and trained operators should install, adjust or use this power tool.
- This tool and its accessories must not be modified in any way.
- Do not use this tool if it has been damaged.
- If the rated speed, operating pressure or hazard warning signs on the tool cease to be legible or become detached, replace without delay.

▲ Air supply and connection hazards

- Air under pressure can cause severe injury.
- Always shut off air supply, drain hose of air pressure and disconnect tool from air supply when not in use, before changing accessories or when making repairs.
- Never direct air at yourself or anyone else.
- Whipping hoses can cause severe injury. Always check for damaged or loose hoses and fittings.
- Do not use quick disconnect couplings at tool. See instructions for correct set up.
- Whenever universal twist couplings are used, lock pins must be installed.
- Do not exceed maximum air pressure of 6.3 bar / 90 psig, or as stated on tool nameplate.

▲ Entanglement hazards

- Keep away from moving sand pad. Note that the abrasive will continue to run after the start valve has closed; for dual action sanders, this can last several seconds.
- Choking, scalping and / or lacerations can occur if loose clothing, gloves, jewellery, neck ware and hair are not kept away from tool and accessories.

▲ Projectile hazards

- Failure of the accessory or abrasive, or of the workpiece, can generate high-velocity projectiles. Even small projectiles can injure eyes and cause blindness.
- Always wear impact-resistant eye and face protection when involved with or near the operation, repair or maintenance of the tool or changing accessories on the tool.
- Be sure all others in the area are wearing impact-resistant eye and face protection
- Daily measure the speed of a rotary sander or polisher with a tachometer to make sure that it is not greater than the RPM marked on the backing pad, drum or abrasive.
- Ensure that the backing pad / abrasive is securely clamped to the sander using the tools provided.

- Ensure that the workpiece is securely fixed.

▲ Accessory hazards

- Always shut off air supply, relieve hose of air pressure and disconnect tool from air supply when changing accessories.
- Use only recommended sizes and types of accessories and consumables.
- Never use a backing pad, drum or abrasive with a permitted speed lower than the air sander speed.
- Never mount a grinding or cutting-off wheel on a sander. A grinding wheel that bursts can cause very serious injury or death when not properly guarded.
- Use only coated abrasive sanding discs or sheets properly secured to the backing pad provided with the air sander. Ensure that self-fixing sanding discs are mounted concentrically.

▲ Operating hazards

- Operators and maintenance personnel must be physically able to handle the bulk, weight and power of the tool.
- Hold the tool correctly: be ready to counteract normal or sudden movements – have both hands available.
- You can be cut, pinched or burned if you come into contact with the sanding pad, abrasive or the work surface. Avoid contact and wear suitable gloves to protect hands.
- Inspect backing pad before each use. Do not use if cracked or broken, or if it has been dropped.
- Never run the tool unless the abrasive is applied to the workpiece.
- There is a risk of electrostatic discharge if used on plastic and other non-conductive materials.
- When using a tool that is designed to have a guard, the guard should be in place to offer protection from grinding swarf and other debris.

▲ Repetitive motion hazards

- When using a power tool to perform work-related activities, the operator might experience discomfort in the hands, arms, shoulders, neck, or other parts of the body.
- Adopt a comfortable posture whilst maintaining secure footing and avoiding awkward or off-balance postures. Changing posture during extended tasks can help avoid discomfort and fatigue.
- Do not ignore symptoms such as persistent or recurring discomfort, pain, throbbing, aching, tingling, numbness, burning sensation, or stiffness. Stop using the tool, tell your employer and consult a physician.

▲ Noise and vibration hazards

- High sound levels can cause permanent hearing loss and other problems such as tinnitus. Use hearing protection as recommended by your employer or occupational health and safety regulations.
- Exposure to vibration can cause disabling damage to the nerves and blood supply of the hands and arms. Wear warm clothing and keep your hands warm and dry. If numbness, tingling, pain or whitening of the skin occurs, stop using tool, tell your employer and consult a physician.
- Hold the tool in a light but safe grip because the risk from vibration is generally greater when the grip force is higher. Where possible support the weight of the tool with a balancer.
- To prevent unnecessary increases in noise and vibration levels:
 - Operate and maintain the tool, and select, maintain and replace the accessories and consumables, in accordance with this instruction manual;
 - Use damping materials to prevent workpieces from "ringing".

Workplace hazards

- Slip/Trip/Fall is a major cause of serious injury or death. Be aware of excess hose left on the walking or work surface.
- Avoid inhaling dust or fumes or handling debris from the work process which can cause ill health (for example, cancer, birth defects, asthma and/or dermatitis). Use dust extraction and wear respiratory protective equipment when working with materials which produce airborne particles.
- Some dust created by power sanding, sawing, grinding, drilling and other construction activities contains chemicals known to the State of California to cause cancer and birth defects or other reproductive harm. Some examples of these chemicals are:
 - Lead from lead based paints
 - Crystalline silica bricks and cement and other masonry products
 - Arsenic and chromium from chemically-treated rubber
- Your risk from these exposures varies, depending on how often you do this type of work.
- To reduce your exposure to these chemicals: work in a well ventilated area, and work with approved safety equipment, such as dust masks that are specially designed to filter out microscopic particles.
- Proceed with care in unfamiliar surroundings. Hidden hazards may exist, such as electricity or other utility lines.
- Potentially explosive atmospheres can be caused by dust and fumes resulting from sanding or grinding. Always use dust extraction or suppression systems which are suitable for the material being processed.
- This tool is not intended for use in potentially explosive atmospheres and is not insulated from coming into contact with electric power.

(4) declare that the product(s):

PNEUMATIC SANDER

(5) Machine type(s) :

CP7225	CP3510	CP7263E
CP7225E	CP3511	CP7263CVE
CP7225SV	CP3512	CP7264E
CP7225SVE	CP3513	CP7264CVE
CP7225CV	CP3514	CP7266E
CP7225CVE	CP3515	CP7266CVE
CP7255	CP7255H	CP7267E
CP7255E	CP7255HE	CP7267CVE
CP7255SV	CP7255HCVE	
CP7255SVE	CP7215H	
CP7255CV	CP7215HE	
CP7255CVE	CP7215HCVE	
CP7215	CP7225-3	
CP7215E	CP7225E-3	
CP7215SV	CP7225CVE-3	
CP7215SVE	CP7255-3	
CP7215CV	CP7255E-3	
CP7215CVE	CP7255CVE-3	

Serial No:

From 00001 to 99999

(6) Origin of the product : Taiwan

(7) is in conformity with the requirements of the council Directives on the approximation of the laws of the Member States relating :

(8) to "**Machinery**" 2006/42/EC (17/05/2006)

•(11) applicable harmonised standard(s) : EN ISO 11148-8:2011

(12) NAME and POSITION of issuer :

Bruno BLANCHET
(General Manager)

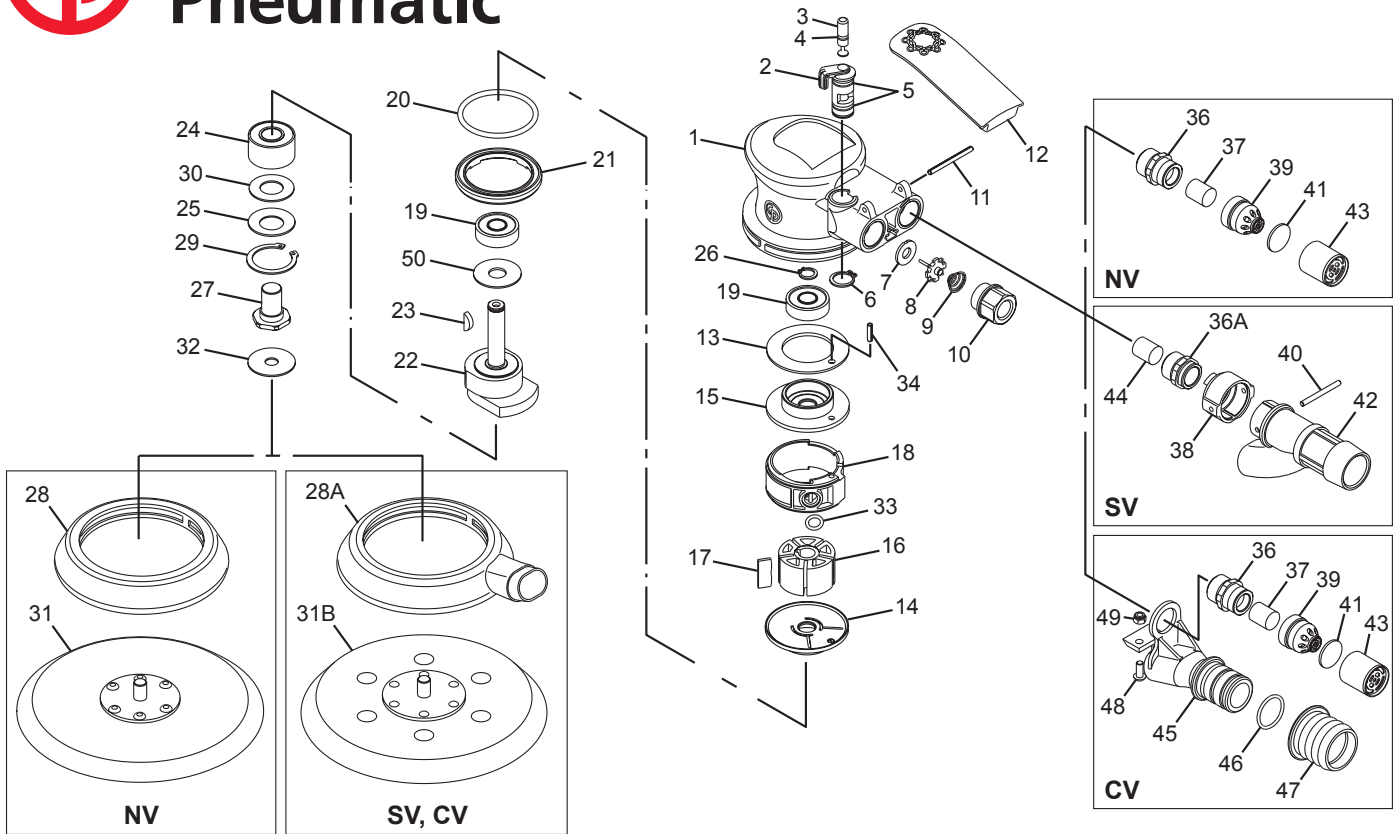
(13) Place & Date : Saint-Herblain, **28/06/2012**





Chicago Pneumatic

CP7215, CP7225, CP7255 Series 6" (150mm) Palm Sanders



Item No.	Parts No.	Description	Qty
A	8940168367	Throttle Kit	
2		Regulator	1
3		Valve Stem	1
4		O-Ring	1
5		O-Ring	2
6		Retaining ring	1
B	8940168368	Valve Seat Kit	
7		Valve seat	1
8		Tip Valve	1
9		Conical Spring	1
C	8940168369	Exhaust Kit (for NV & CV)	
36		Muffler Screw	1
37		Muffler	1
38		Connector (for SV)	1
39		Nozzle	1
41		Muffler	1
43		Muffler Cap	1
D		ECO Change Motor Kit Composition	
13		Front Ring	1
14		Rear End Plate	1
15		Front End Plate	1
16	8940163416	Rotor	1
17	8940163417	Blades set (5 pcs.)	1
18	8940163418	Cylinder	1
19		Bearing	2
20	8940163420	O-Ring	1
22		Motor Shaft Balancer (see detail below**)	1
23		Rotor Key	1
24		Bearing	1
25		Bearing Shield	1
26		Snap Ring	1
27		Balancer Shaft	1
29		Snap Ring	1
30		Bearing Seal	1
33	8940163435	O-Ring	1
34		Pin	1
50		Anti-dust washer	1
**	8940168372	ECO Change Motor Kit CP7255	
22		Motor Shaft Balancer 3/16" (5mm) orbital	1
**	8940168373	ECO Change Motor Kit CP7215	
22		Motor Shaft Balancer 3/8" (10mm) orbital	1
**	8940168374	ECO Change Motor Kit CP7225	
22		Motor Shaft Balancer 3/32" (2.5mm) orbital	1
1	8940163399	Housing Assembly 3/16" (5mm) orbital ; red color	1
10	8940163409	Air Inlet	1
11	8940163494	Spring Pin	1
12	8940163410	Lever 3/32" (2.5mm) orbital	1
	8940163411	Lever 3/16" (5mm) orbital	1

Item No.	Parts No.	Description	Qty
	8940163412	Lever 3/8" (10mm) orbital	1
21	8940163421	Lock Ring	1
28	8940163430	Skirt	1
28A	8940163431	Skirt (for SV & CV)	1
	8940166181	Skirt (for CP7215SV, CP7215SVE)	1
31	8940163455	6" (150mm) Pad PSA w/ central hole	1
	8940163456	6" (150mm) Pad Hook & Loop w/ central hole	1
31B	8940163457	6" (150mm) Pad PSA w/ 6 holes	1
	8940163458	6" (150mm) Pad Hook & Loop w/ 6 holes	1
32	8940163434	Heat Isolation Washer	*
36A	8940163439	Muffler Screw (for SV)	1
40	8940163443	Pin (for SV)	1
42	8940163445	Vacuum Adapter (for SV)	1
44	8940163447	Muffler (for SV)	1
45	8940163448	Vacuum Adapter (for CV)	1
46	8940163449	O-Ring (for CV)	1
47	8940163450	Revolving Connector (for CV)	1
48	8940163451	Screw (for CV)	1
49	8940163452	U nut (for CV)	1
	8940163525	Pad Wrench (not shown)	1
	8940163495	Dust Bag Unit (for SV) (not shown)	1
	8940163497	Dust Hose (for SV) (not shown)	1
	8940163220	Warning label (not shown)	1
	8940163459	Tune-Up Kit	
		(Incl: 7, 17, 19, 20, 23, 26, 33, 50)	
	8940163460	Maintenance Kit	
	8940163525	Pad Wrench	1
		Lock Ring Wrench	1
		Extractor	1

Recommended accessories :		
8940163461	Dust Extraction Kit	
	1 Dust bag + Dust Hose for SV	
8940163496	Dust Bag Set	
	5 pcs Dust Bag for SV	
6153501170	Vacuum Hose Adaptor Ø25 (1") / Ø32 (1 1/4")	
6158044480	Vacuum Hose Adaptor Ø25 (1") / Ø28 (1 1/8")	
8940168235	15 Holes Vacuum PSA Pad	
8940168236	15 Holes H&L Pad	

* Qty= 1 for CP7225, CP7225E, CP7225SV, CP7225SVE, CP7255, CP7255E, CP7255SV, CP7255SVE, CP7215, CP7215E, CP7215SV, CP7215SVE, CP7215CV, CP7215CVE
Qty= 2 for CP7225CV, CP7225SVCV, CP7225CVCVE, CP7225CVCVE

	8940163475	Operator's Manual
	8940168614	EC Declaration
	6159948770	Safety Instructions

Spare parts without part number are not sold separately - High wear parts underlined

View other air tools and compressors made by Chicago Pneumatic on our website.