

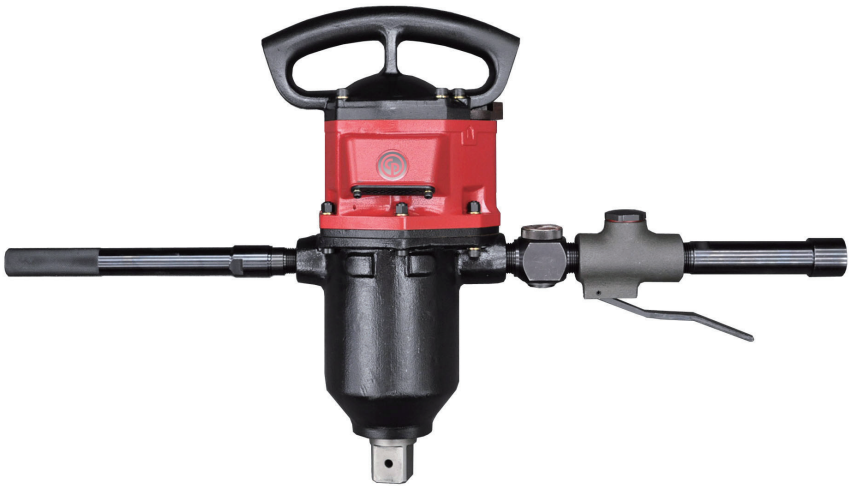


Chicago  
Pneumatic

# *Operator's Manual*

CP6130, CP6240

Impact Wrench



## **WARNING**

*To reduce risk of injury, everyone using, installing, repairing, maintaining, changing accessories on, or working near this tool must read and understand these instructions, as well as separately provided safety instructions part number 6159948710, before performing any such task.*

# Air Diagram:

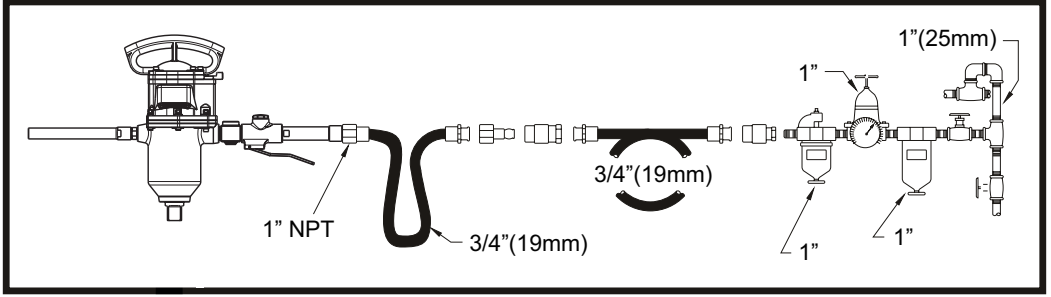


Fig. 1

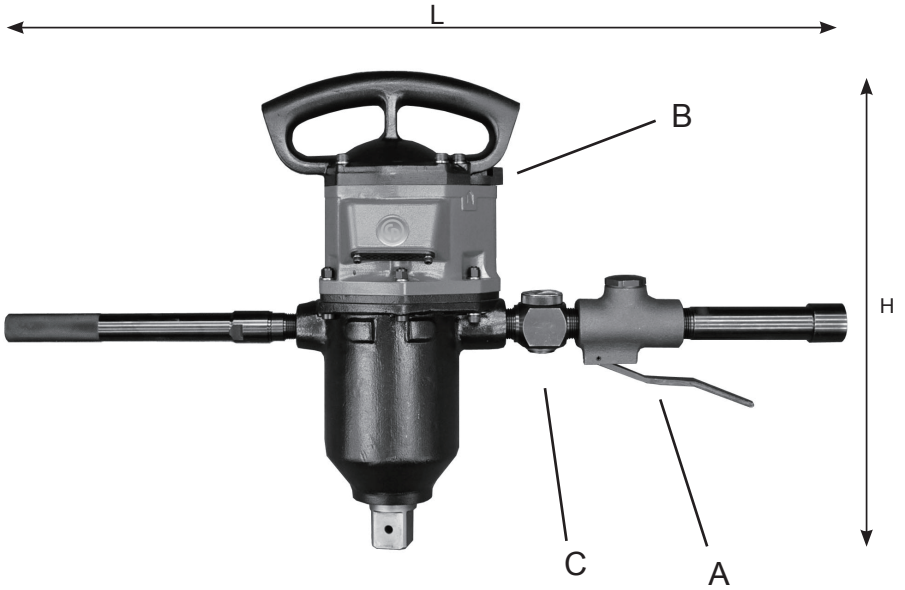


Fig. 2

Model	Drive	Torque		Speed	Weight	Inner Hose Dia.	Dimension L x W x H		Air Consumption		Air Inlet	Sound-Pressure $L_{pA}$	Sound-Power $L_{wA}$	Vibrations	
		Working	Max				Average	At load	ahd	k					
	1	2	3	4	5	6	7	8	9	10	11				
	[inch]	[ft.lbs] [Nm]	[ft.lbs] [Nm]	[min-1]	[lb] [kg]	[inch.] [mm]	[inch.] [mm]	[SCFM] [NI/s]	[SCFM] [NI/s]	[inch]	[dB(A)]	[dB(A)]	[m/s <sup>2</sup> ]	[m/s <sup>2</sup> ]	
CP6130-T70	1-1/2"	2433.8-5199.4 3300-7050	6195.8 8400	4000	72.6 33.0	3/4" 19	33.8*7.5*19.7 858*190*500	16.8 7.9	67.2 31.7	1"	104	115	4.7	1.7	
CP6240-T120	2-1/2"	3761.3-9145.0 5100-12400	10326.4 14000	3000	132.0 60.0	3/4" 19	35.8*10.6*24 908*270*610	18.6 8.8	74.2 35	1"	107	118	4.5	1.5	

### 1. Technical Data (see Fig 2.)

Model	Torque		Speed	Weight	Inner Hose Dia.	Dimension L x W x H	Air Consumption		Air Inlet	Sound-Pressure L <sub>PA</sub>	Sound-Power L <sub>WA</sub>	Vibrations		
	Working	Max					Average	At load				ahd	k	
	1	2	3	4	5	6	7	8	9	10	11			
	[inch]	[ft.lbs] [Nm]	[ft.lbs] [Nm]	[min-1]	[lb] [kg]	[inch.] [mm]	[inch.] [mm]	[SCFM] [NI/s]	[SCFM] [NI/s]	[inch]	[dB(A)]	[dB(A)]	[m/s <sup>2</sup> ]	[m/s <sup>2</sup> ]

max pressure 6.3 bar (90 psi)

a<sub>vd</sub>: Vibration level, k Uncertainty ; L<sub>PA</sub> Sound pressure level dB(A), K<sub>PA</sub> = K<sub>WA</sub> = 3 dB Uncertainty.

**Declaration of noise (ISO 15744) and vibration emission (ISO 28927-2)**

All values are current as of the date of this publication.

These declared values were obtained by laboratory type testing in accordance with the stated standards and are suitable for comparison with the declared values of other tools tested in accordance with the same standards. These declared values are not adequate for use in risk assessments and values measured in individual work places may be higher. The actual exposure values and risk of harm experienced by an individual user are unique and depend upon the way the user works, the workpiece and the workstation design, as well upon the exposure time and the physical condition of the user.

We, **CHICAGO PNEUMATIC TOOLS**, cannot be held liable for the consequences of using the declared values, instead of values reflecting the actual exposure, in an individual risk assessment in a work place situation over which we have no control.

This tool may cause hand-arm vibration syndrome if its use is not adequately managed.

We recommend a programme of health surveillance to detect early symptoms which may relate to noise or vibration exposure, so that management procedures can be modified to help prevent future impairment.

### 2. Machine Type

- This product is designed for installing and removing threaded fasteners in wood, metal and plastic. No other use permitted. For professional use only.
- Please read the product safety information carefully!

### 3. Implementation and Operation

- Connect device as shown in Fig.01.
- Fix the accessories properly to the tool.
- To operate in reverse rotation, turn the reverse switch (B) to the left. To operate in forward rotation, turn the reverse switch (B) to the right.
- To start the machine, simply pull the trigger (A). Machine speed is increase by increasing pressure on the trigger. Release the trigger to stop.
- This impact wrench is equipped with a regulator (C) to enable adjustment of output power. Turn the regulator knob counter-clockwise for maximum power, clockwise to reduce power.
- Use the reverse switch (B) only when the drive spindle comes to a complete stop. Changing the speed before the drive spindle stops may damage the machine.

### 4. Lubrication

#### • Motor Lubrication

Use an air line lubricator with SAE #10 oil, adjusted to two (2) drops per minute. If an air line lubricator cannot be used, add air motor oil to the inlet once a day. Recommended lubricant CP Oil PROTECTO-LUBE:

- 4 oz (0.12l) P/N: CA149661
- 20.8 oz (0.591l) P/N: CA000046
- 1gal (3.8l) P/N: P08950

#### • Clutch Lubrication

Use CP Pneu-Lube Synthetic Clutch Grease 8940158455.

### 5. Maintenance

- Follow local country environmental regulations for safe handling and disposal of all components
- It's recommended to dismantle the tool for overhauling and cleaning periodically after 500 hours of operation or once every six months.
- Always ensure that the machine is disconnected from energy source (compressed air) to avoid accidental operation.
- High wear parts are underlined in the parts list.
- To keep downtime to a minimum, the following service kits are recommended:  
**Tune-Up Kit:** see part list

### 6. Disposal

- The disposal of this equipment must follow the legislation of the respective country.
- All damaged, badly worn or improperly functioning devices **MUST BE TAKEN OUT OF OPERATION.**
- Repair only by technical maintenance staff.**

### 7. Declaration of conformity

Declare that the product(s): **Impact Wrench**

Machine type(s) : **CP6130-T70, CP6240-T120**

Serial Number: **From 00001 to 99999**

Origin of the product : **Japan**

is in conformity with the requirements of the council Directives on the approximation of the laws of the Member States relating : to "Machinery" **2006/42/EC (17/05/2006)**

applicable harmonised standard(s) : **EN ISO 11148-6:2010**

Name and position of issuer : **Bruno BLANCHET (General Manager)**

Place & Date : **Saint-Herblain, 26/11/2012**



Copyright 2012, Chicago Pneumatic Tool Co. LLC

All rights reserved. Any unauthorized use or copying of the contents or part thereof is prohibited. This applies in particular to trademarks, model denominations, part numbers and drawings. Use only authorized parts. Any damage or malfunction caused by the use of unauthorized parts is not covered by Warranty or Product Liability.

## WARNING

To reduce risk of injury, everyone using, installing, repairing, maintaining, changing accessories on, or working near this tool must read and understand these instructions before performing any such task.

# SAFETY INSTRUCTIONS

## DO NOT DISCARD - GIVE TO USER

- Our goal is to produce tools that help you work safely and efficiently. The most important safety device for this or any tool is YOU. Your care and good judgment are the best protection against injury. All possible hazards cannot be covered here, but we have tried to highlight some of the important ones.
- Only qualified and trained operators should install, adjust or use this power tool.
- This tool and its accessories must not be modified in any way.
- Do not use this tool if it has been damaged.
- If the rated speed, operating pressure or hazard warning signs on the tool cease to be legible or become detached, replace without delay.

### ⚠ Air Supply And Connection Hazards

- Air under pressure can cause severe injury.
- Always shut off air supply, drain hose of air pressure and disconnect tool from air supply when not in use, before changing accessories or when making repair.
- Never direct air at yourself or anyone else
- Whipping hoses can cause serious injury. Always check for damaged or loose hoses and fittings.
- Do not use quick disconnect couplings at tool. See instructions for correct setup.
- Whenever universal twist couplings are used, lock pins must be installed.
- Do not exceed maximum air pressure of 90 psi/6.3 bar or as stated on tool nameplate.

### ⚠ Entanglement Hazards

- Keep away from rotating drive. Choking, scalping and / or lacerations can occur if loose clothing, gloves, jewellery, neck ware and hair are not kept away from tool and accessories.
- Gloves can become entangled with the rotating drive, causing severed or broken fingers.
- Rotating drive sockets and drive extensions can easily entangle rubber-coated or metal reinforced gloves.
- Do not wear loose-fitting gloves or gloves with cut or frayed fingers.
- Never hold the drive, socket or drive extension.

### ⚠ Projectile Hazards

- Always wear impact-resistant eye and face protection when involved with or near the operation, repair or maintenance of the tool or changing accessories on the tool.
- Be sure all others in the area are wearing impact-resistant eye and face protection. Even small projectiles can injure eyes and cause blindness.
- Serious injury can result from over-torqued or under-torqued fasteners, which can break, or loosen and separate. Released assemblies can become projectiles. Assemblies requiring a specific torque must be checked using a torque meter.

Note: So-called "click" torque wrenches do not check for potentially dangerous over-torque conditions.

- Use only impact wrench sockets and accessories in good condition. Sockets in poor condition or hand sockets and accessories used with impact wrenches can shatter.
- Never operate the tool off of the work. It may run too fast and cause the accessory to be thrown off the tool.
- Ensure that the workpiece is securely fixed.

### ⚠ Accessory hazards

- Use only proper accessory retainers (see parts list). Use deep sockets wherever possible.
- For tools using the pin and O-ring socket retention system, use the O-ring to retain the socket pin securely.
- Always use the simplest hook-up possible. Long, springy extension bars and adapters absorb impact power and could break. Use deep sockets wherever possible.

### ⚠ Operating hazards

- Operators and maintenance personnel must be physically able to handle the bulk, weight and power of the tool.
- Hold the tool correctly; be ready to counteract normal or sudden movements – have both hands available.
- Do not use with reduced air pressure or in a worn condition: the clutch may not operate, resulting in sudden rotation of the tool handle.
- Be in control of the throttle at all times. Do not get caught between the tool and the work.

### ⚠ Repetitive motion hazards

- When using a power tool to perform work-related activities, the operator might experience discomfort in the hands, arms, shoulders, neck, or other parts of the body.
- Adopt a comfortable posture whilst maintaining secure footing and avoiding awkward or offbalance postures. Changing posture during extended tasks can help avoid discomfort and fatigue.
- Do not ignore symptoms such as persistent or recurring discomfort, pain, throbbing, aching, tingling, numbness, burning sensation, or stiffness. Stop using the tool, tell your employer and consult a physician.

### ⚠ Noise and Vibration hazards

- High sound levels can cause permanent hearing loss and other problems such as tinnitus. Use hearing protection as recommended by your employer or occupational health and safety regulations.
- Exposure to vibration can cause disabling damage to the nerves and blood supply of the hands and arms. Wear warm clothing and keep your hands warm and dry. If numbness, tingling, pain or whitening of the skin occurs, stop using tool, tell your employer and consult a physician.
- Hold the tool in a light but safe grip because the risk from vibration is generally greater when the grip force is higher. Where possible use a suspension arm or fit a side handle.
- To prevent unnecessary increases in noise and vibration levels:
  - Operate and maintain the tool, and select, maintain and replace the accessories and consumables, in accordance with this instruction manual;
  - Do not use worn or ill-fitting screwdriver bits, sockets or extensions.
  - Do not touch sockets or accessories during impacting.

### ⚠ Workplace Hazards

- Slip/Trip/Fall is a major cause of serious injury or death. Be aware of excess hose left on the walking or work surface.
- Avoid inhaling dust or fumes or handling debris from the work process which can be harmful to your health (for example, cancer, birth defects, asthma and/or dermatitis). Use dust extraction and wear respiratory

protective equipment when working with materials which produce airborne particles.

- Some dust created by power sanding, sawing, grinding, drilling and other construction activities contains chemicals known to the State of California to cause cancer and birth defects or other reproductive harm. Some examples of these chemicals are:
  - Lead from lead based paints
  - Crystalline silica bricks and cement and other masonry products
  - And Arsenic and chromium from chemically- treated rubber

Your risk from these exposures varies, depending on how often you do this type of work. To reduce your exposure to these chemicals: work in a well ventilated area, and work with approved safety equipment, such as dust masks that are specially designed to filter out microscopic particles.

- Proceed with care in unfamiliar surroundings. Be aware of potential hazards created by your work activity. This tool is not insulated for coming into contact with electric power sources.
- This tool is not recommended for use in explosive atmospheres.

(4) declare that the product(s): **PNEUMATIC IMPACT WRENCH**

(5) Machine type(s) :

**CP6130-T70  
CP6240-T120**

<b>Serial No:</b> From 00001 to 99999
--

(6) Origin of the product : JAPAN

(7) is in conformity with the requirements of the council Directives on the approximation of the laws of the Member States relating :

(8) to "**Machinery**" 2006/42/EC (17/05/2006)

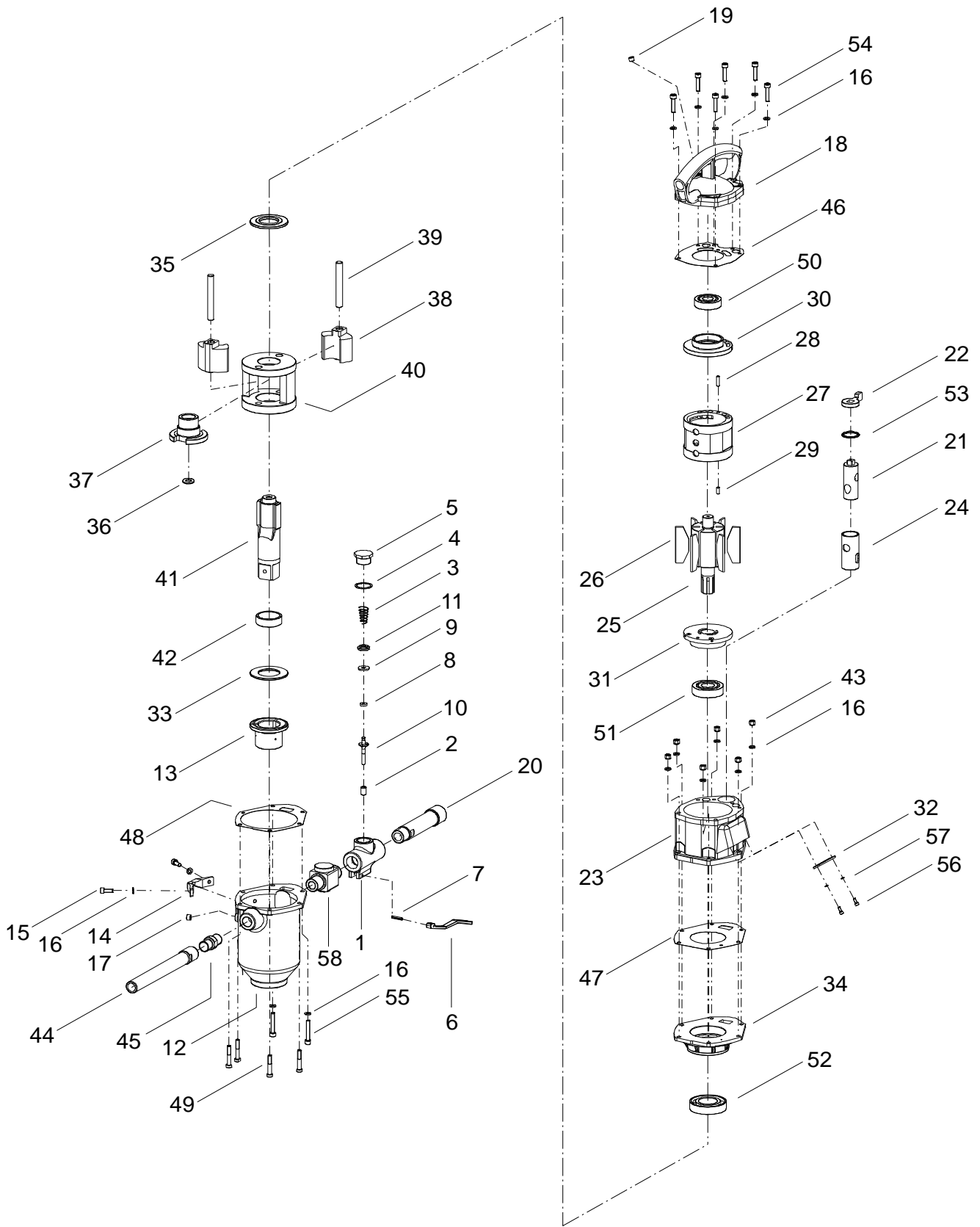
(11) applicable harmonised standard(s) : EN ISO 11148-6:2012

(12) NAME and POSITION of issuer :

**Nicolas LEBRETON  
(R&D Manager)**

(13) Place & Date : Saint-Herblain, **20 May 2013**





Spare parts without part number are not sold separately - High wear parts underlined

Index No.	Part No.	Description	Qty.	Index No.	Part No.	Description	Qty.
12	5412103180	Clutch Housing	1	<b>G</b>	<b>8940171022</b>	<b>Screw Kit</b>	
18	5412103178	Housing Cover	1	16		Spring Washer	16
20	5412103240	Throttle Valve Handle	1	54		Cap Screw	6
23	5412103179	Housing	1	55		Cap Screw	2
25	5412056661	Rotor	1	43		Hexagon Nut	6
26	<u>8940171030</u>	Rotor Blade (Set of 6pcs)	1	49		Half-Cut Head Bolt	4
27	5412056663	Cylinder	1	<b>H</b>	<b>8940171023</b>	<b>Clutch Housing Cover Kit</b>	
38	8940171031	Hammer Clutch (Set of 2pcs)	1	34		Clutch Housing Cover	1
39	8940171032	Clutch Pin (Set of 2pcs)	1	35		Spacer ( B )	1
40	5412056675	Clutch Frame	1	52		Ball Bearing	1
41	5412056676	Anvil	1	<b>I</b>	<b>8940171024</b>	<b>Dead Handle Kit</b>	
58	5412057824	Regulator	1	44		Dead Handle	1
<b>A</b>	<b>8940171014</b>	<b>Throttle Lever Kit</b>		45		Dead Handle Joint	1
1		Throttle Valve Body	1	<b>J</b>	<b>8940171025</b>	<b>Reverse Valve Kit</b>	
<b>A1</b>	<b>8940171015</b>	<b>Lever Kit</b>		21		Reverse Valve	1
6		Throttle Valve Lever	1	22		Reverse Valve Lever	1
7		Spring Pin	1	24		Reverse Valve Bushing	1
<b>A2</b>	<b>8940171016</b>	<b>Throttle Valve Kit</b>		53		<u>O Ring</u>	1
2		Throttle Valve Rod Bushing	1	<b>K</b>	<b>8940171026</b>	<b>Clutch Bushing Kit</b>	
3		Throttle Valve Spring	1	42		Clutch Frame Bushing	1
4		T.V. Cover Packing	1	13		Clutch Housing Bushing	1
5		Throttle Valve Cover	1	<b>L</b>	<b>8940171027</b>	<b>Cam Kit</b>	
8		Throttle Valve	1	36		Spacer ( C )	1
9		Throttle Valve Collar	1	37		Cam	1
10		Throttle Valve Rod	1	<b>M</b>	<b>8940171028</b>	<b>Tune Up Kit</b>	
11		Sub Throttle Valve	1	4		T.V. Cover Packing	1
<b>B</b>	<b>8940171017</b>	<b>Hanger Kit</b>		8		Throttle Valve	1
14		Hanger ( Horizontal )	1	9		Throttle Valve Collar	1
15		Cap Screw	2	26	<u>8940171030</u>	Rotor Blade (Set of 6pcs)	1
16		Spring Washer	2	46		Packing ( A )	1
<b>C</b>	<b>8940171018</b>	<b>Rear Plate Kit</b>		47		Packing ( B )	1
28		Spring Pin	1	48		Packing ( C )	1
50		Ball Bearing	1	53		O Ring	1
30		Cylinder Upper Plate	1	<b>N</b>	<b>8940171029</b>	<b>Small Part Kit</b>	
<b>D</b>	<b>8940171019</b>	<b>Front Plate Kit</b>		7		Spring Pin	1
29		Spring Pin	1	17		Plug	1
31		Cylinder Lower Plate	1	19		Plug	1
51		Ball Bearing	1	28		Spring Pin	1
<b>E</b>	<b>8940171020</b>	<b>Exhaust Cover Kit</b>		29		Spring Pin	1
32		Exhaust Cover	1	33		Thrust Washer	1
56		Cap Screw	2				
57		Spring Washer	2				
<b>F</b>	<b>8940171021</b>	<b>Gasket Kit</b>					
46		Packing ( A )	1				
47		Packing ( B )	1				
48		Packing ( C )	1				

	6159948710	Safety instructions	1
	2050552113	Operator's manual	1
	5412060277	Warning Label	1

**Recommended Accessories**

**Hexagon Wrench**

5412052209: 6mm Hex, 90Lx32H

Spare parts without part number are not sold separately - High wear parts underlined