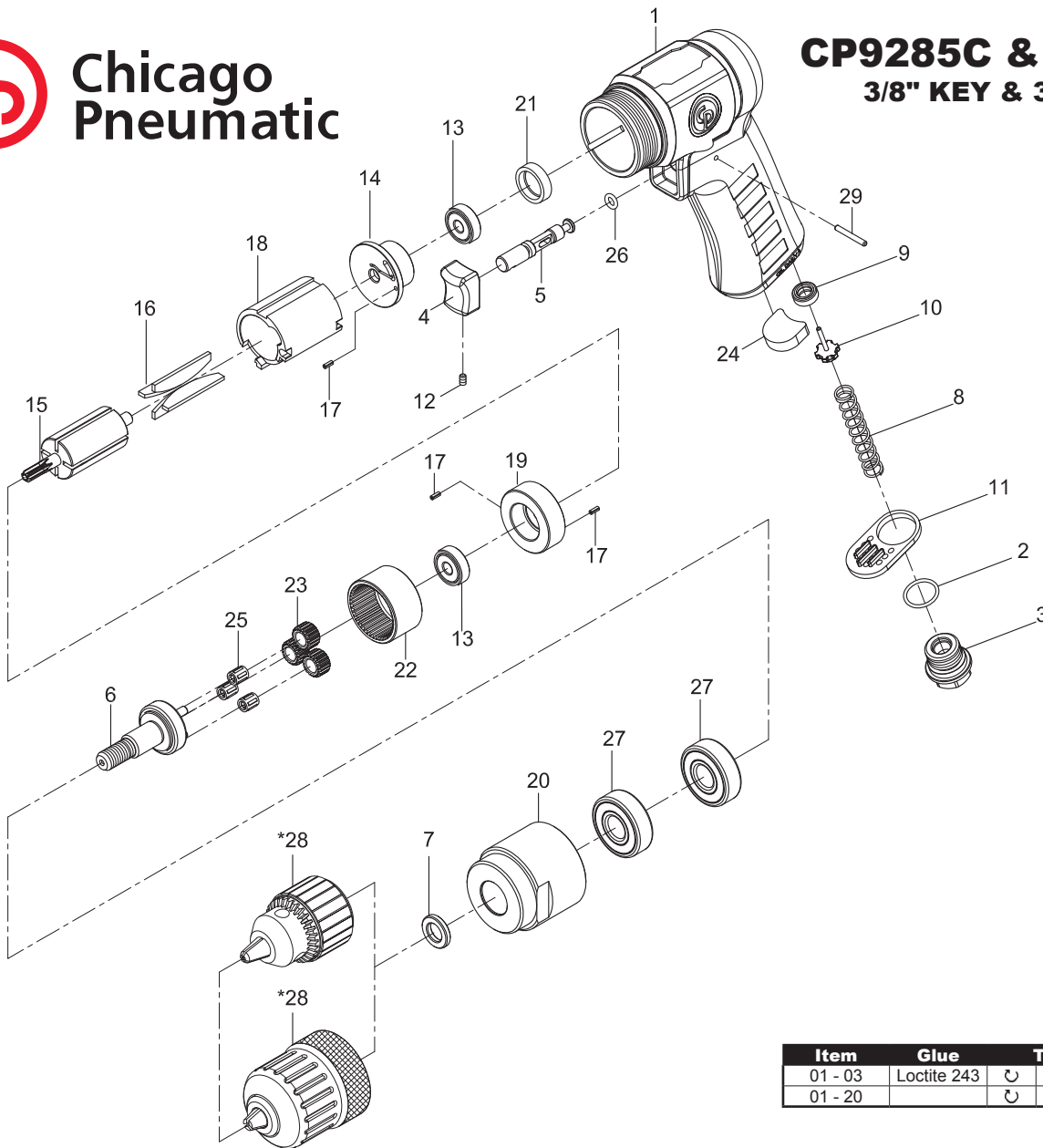




**Chicago  
Pneumatic**

**CP9285C & CP9287C**  
**3/8" KEY & 3/8" KEY LESS**  
**DRILL**  
**Serie D**



Item	Glue		Tightening torque
01 - 03	Loctite 243	↺	7.3 ft.lb - 10 Nm
01 - 20		↺	36.9 ft.lb - 50Nm

Ref	CP Part No.	Description	Q'ty
<b>A</b>	<b>8940175265</b>	<b>Throttle Kit</b>	
8		Spring	1
9		Valve Seal	1
10		Valve	1
<b>B</b>	<b>8940175266</b>	<b>Inlet Kit</b>	
2		O-Ring	1
3		Air Inlet	1
11		Silencer	1
<b>C</b>	<b>8940175293</b>	<b>Motor Housing Kit</b>	
1	8940175262	Motor Housing with grip	1
4		Trigger	1
5		Valve Stem	1
12		Stem Screw	1
26		O-Ring	1
29		Pin	1
<b>D</b>	<b>8940175267</b>	<b>Trigger Kit</b>	<b>1</b>
		Include 4, 5, 12, 26, 29	
<b>E</b>	<b>8940175282</b>	<b>Rear End Plate</b>	
13		Ball Bearing (626zz)	1
14		Rear End Plate	1
17		Spring Pin	1
21		Cap	1
<b>F</b>	<b>8940175283</b>	<b>Front Plate Kit</b>	
13		Ball Bearing (626zz)	1
17		Spring Pin	2
19		Front End Plate	1

Ref	CP Part No.	Description	Q'ty
<b>G</b>	<b>8940175284</b>	<b>Gearbox Kit</b>	
6		Work Spindle	1
22		Internal Gear	1
23		Planet Gear	3
25		Needle Bearing	3
<b>H</b>	<b>8940175287</b>	<b>Service Gear Set</b>	
		Include 23(x3) & 25 (x3)	
<b>SP</b>	<b>8940175285</b>	<b>Small Parts Kit</b>	
		Include 3, 7, 11, 12, 17, 21, 24 & 29	
<b>TK</b>	<b>8940175286</b>	<b>Tune-Up Kit</b>	
		Include 9, 16 & 26	

15	2050485473	Rotor	1
16	2050485483	Rotor Blades (Set of 4)	1
18	8940175264	Cylinder	1
20	2050485513	Clamp Nut	1
27	2050486953	Ball Bearing (6201Z)	2
*28	2050486973	Industrial Key Chuck (3/8") & Key (Not Shown) For CP9285C	1
	2050502063	Industrial Keyless Chuck (3/8") For CP9287C	1

\*Optional parts

**Recommended Accessories**



Protecto-lube Oil (for air lubrication)  
 CA149661 (4 oz - 0.12 l)  
 CA000046 (20 oz - 0.59 l)



Airoilene Oil (to clean motor parts)  
 P089507 (1 gal - 3.8 l)