



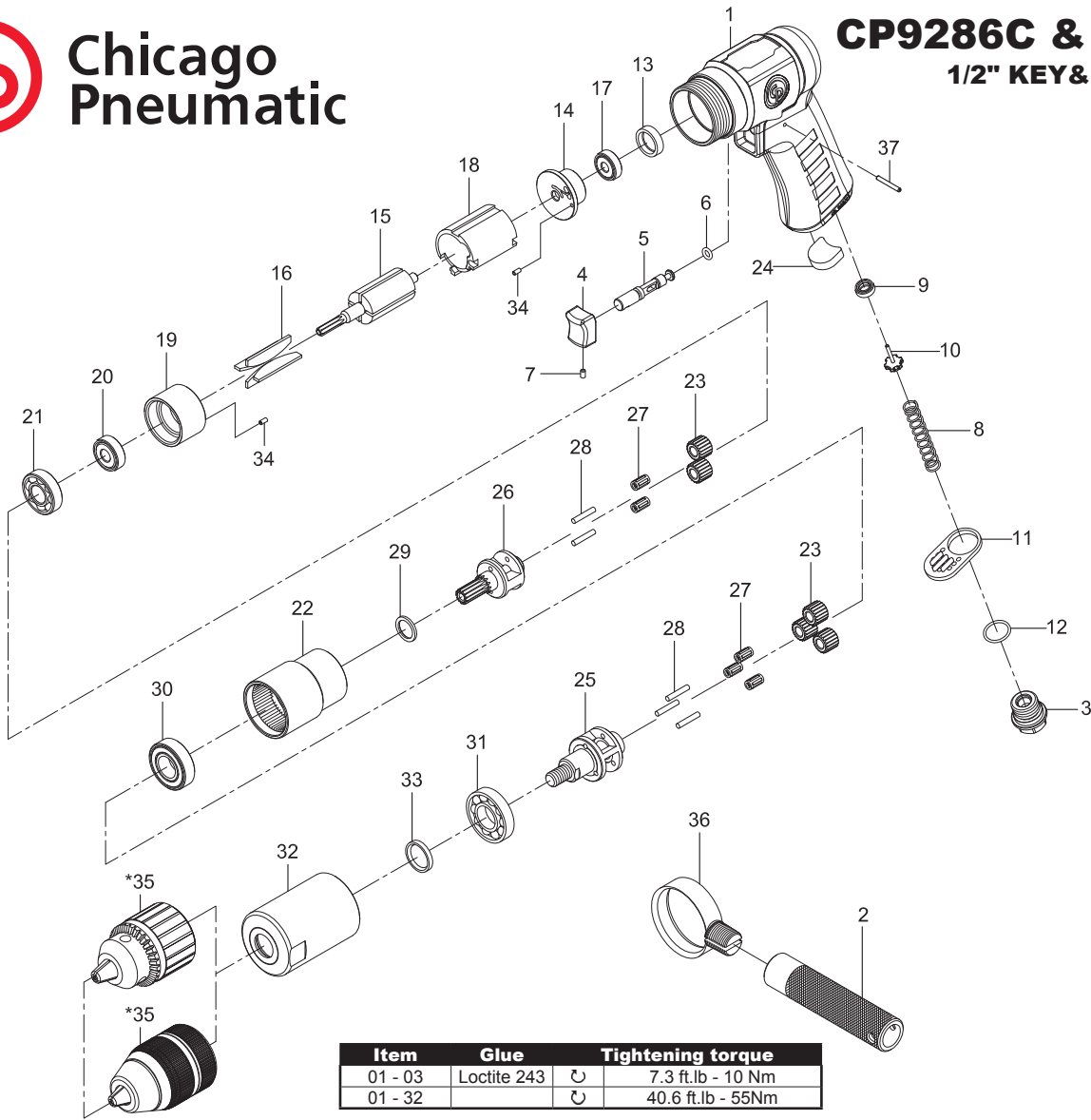
**Chicago
Pneumatic**

CP9286C & CP9288C

1/2" KEY & 1/2" KEY LESS

DRILL

Serie D



Item	Glue	Tightening torque
01 - 03	Loctite 243	7.3 ft.lb - 10 Nm
01 - 32		40.6 ft.lb - 55Nm

Ref	CP Part No.	Description	Q'ty
A	8940175265	Throttle Kit	1
8		Spring	1
9		Valve Seal	1
10		Valve	1
B	8940175266	Inlet Kit	1
3		Air Inlet	1
11		Silencer	1
12		O-Ring	1
C	8940175294	Motor Housing Kit	1
1	8940175260	Motor Housing with grip	1
4		Trigger	1
5		Valve Stem	1
6		O-Ring	1
7		Screw	1
37		Pin	1
D	8940175267	Trigger Kit	1
		Include 4,5,6,7,37	
E	8940175276	Rear End Plate	1
13		Cap	1
14		End Plate	1
17		Ball Bearing (626zz)	1
34		Spring Pin	1
F	8940175277	Front Plate Kit	1
19		Front End Plate	1
20		Ball Bearing (608zz)	1
21		Ball Bearing (6001)	1
34		Spring Pin	1

Ref	CP Part No.	Description	Q'ty
G	8940175278	Gearbox Kit	1
22		Internal Gear	1
25		Planet Cage	1
26		Planet Cage	1
23		Planet Gear	5
27		Needle Bearing	5
28		Pin	5
H	8940175288	Service Gear Set	1
		Include 23(x5), 27(x5) & 28(x28)	
I	8940175279	Side Handle Kit	1
2		Handle	1
36		Retainer	1
SP	8940175280	Small Parts Kit	
		Include 3,7,11,13,24,29,34 & 37	
TK	8940175281	Tune-Up Kit	
		Include 6,9,16 & 33	

15	2050485233	Rotor	1
16	2050484273	Rotor Blades (Set of 4)	1
18	2050485193	Cylinder	1
30	2050486903	Ball Bearing (6002zz)	1
31	2050486913	Ball Bearing (Ee5)	1
32	2050485293	Front Housing	1
*35	2050486963	Industrial Key Chuck (1/2") & Key(Not Shown) For CP9286C	1
	2050502073	Industrial Keyless Chuck (1/2") For CP9288C	1

*Optional parts

Recommended Accessories



Protecto-lube Oil (to clean motor parts)
CA149661 (4 oz - 0.12 l)
CA000046 (20 oz - 0.59 l)



Airoilene Oil (for air lubrication)
P089507 (1 gal - 3.8 l)

Rely only on high-grade air drills and drivers offered on our virtual shelves.