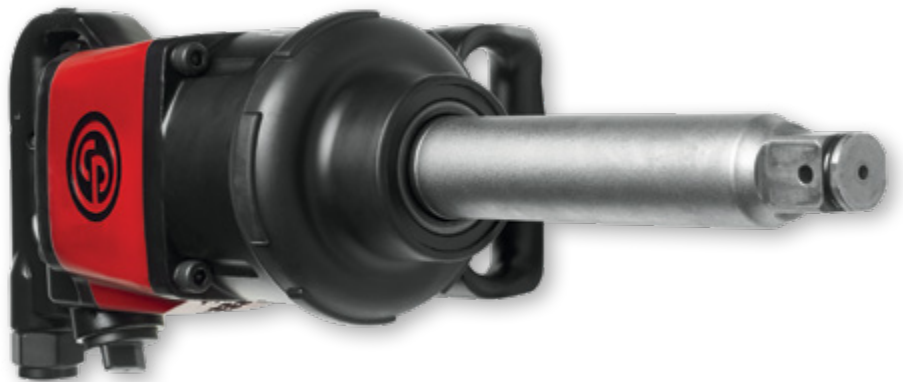


# CP7782TL-6

1" Torque Limited Impact Wrench



The first and only  
**1" torque limited**  
impact wrench

*To make your life easier, we leveraged our expertise in impact wrenches by developing the CP7782TL-6 to prevent from overtightening bolts.*

People.  
Passion.  
Performance.



Chicago  
Pneumatic

# CP7782TL-6

The first and only 1" torque limited impact wrench

## HIGH OPERATOR COMFORT

Ergonomic D-handle with full teasing trigger

## HIGH DURABILITY

Pinless closed reinforced rocking dog mechanism

## SHOCK ABSORBING

Rubber bumper protecting both applications & tool (included)

## SAFE

Socket retainer ring combined with hole retainer



## CONVENIENT

Ergonomic handle with variable positions

## POWERFUL IN REVERSE

1920 ft.lbs / 2600 Nm  
max torque  
3 setting positions



## TORQUE LIMITED

1 position torque limited in forward around 370 ft.lbs / 500 Nm



**Torque Limited**

## DIMENSIONS

Length	
in.	mm
20.11	510.8



Model	Part #	Square Drive	Anvil	Socket Retainer	Free Speed	Max Torque		Torque Limited		Tool Weight		Air Cons. @ Load		Sound Pressure	Sound Power	Vibration
					RPM	ft.-lbs.	Nm	ft.-lbs.	Nm	lbs.	kg	cfm	l/s	dB(A)	dB(A)	m/s <sup>2</sup> (k)
CP7782TL-6	894 107 7827	1"	6"	Ring & hole	5200	1920	2600	≈370	≈500	25.55	11.6	40.7	19.2	100	111	7.8 (1.8)

Hose int. 1/2" (10 mm) - @90 PSI (@6.3 Bar)

Listed specifications are for reference only. Please check tool documentation.

## 1" SQUARE DRIVE IMPACT SOCKET SETS

Model	Part #	Description [sizes]
<b>Metric sets (mm)</b>		
SS818	894 016 4476	8PC - Standard set [27, 30, 32, 33, 35, 36, 38 & 41 mm]
SS8107WS	894 016 7877	7PC - Wheel Service Set [Deep: 27, 33, 35, 36, 38, 41 mm   Square: 17, 21 mm]
SS814D	894 016 6016	4PC - Deep set [27, 32, 33 & 36 mm]
<b>SAE (in.) &amp; Metric (mm) sets</b>		
SS8205WS	894 016 6943	5PC - [Deep: 33 mm, 1-1/2"   Thin wall: 1-1/8", 1-1/4"   Square: 13/16"]
SS8210HDW	894 016 6939	10PC - [Deep: 33 mm, 1", 1-3/16", 1-3/4"   Thin wall deep: 1-1/8", 1-1/2", 1-1/4"   Square: 13/16", 15/16"   Controlled depth: 1-1/2"]

More references available in the CP Socket Catalog

## TUNE-UP KIT

Model	Tune-up kit part number
CP7782TL-6	894 016 9847



Discover more tire changing solutions in our tireshop industry brochure.