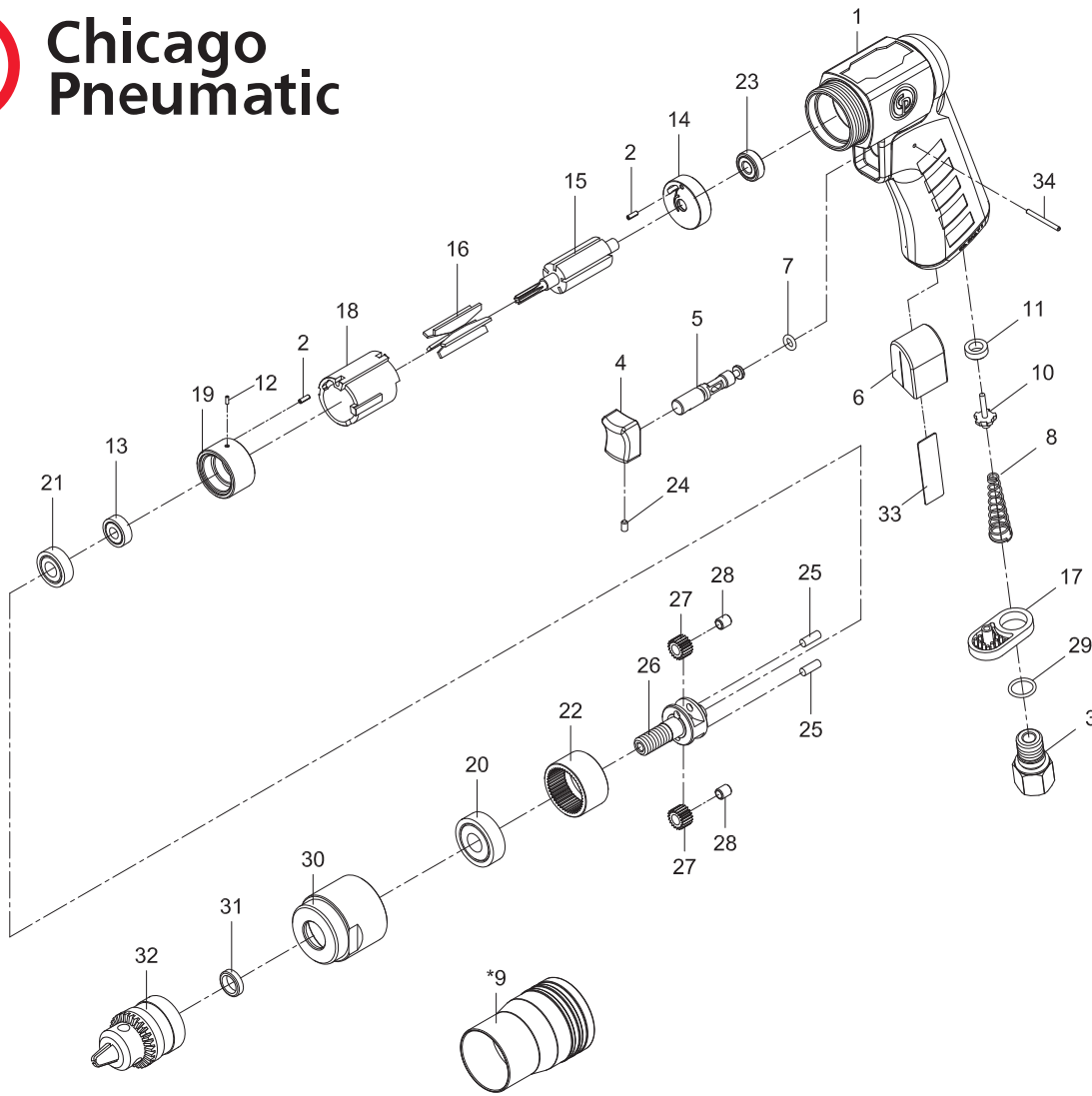




**Chicago
Pneumatic**

CP7300C
1/4" KEY DRILL
Serie D



Item	Glue	Tightening torque
01 - 03	Loctite 243	7.3 ft.lb - 10 Nm
01 - 30		29.5 ft.lb - 40 Nm

Ref	CP Part No.	Description	Q'ty
A	8940175334	Throttle Kit	
8		Spring	1
10		Valve	1
11		Valve Seat	1
B	8940175335	Inlet Kit	
3		Air Inlet	1
17		Exhaust Diffuser	1
29		O-Ring (10.7x1.5)	1
C	8940175336	Motor Housing Kit	
1	8940175306	Motor Housing With Grip	1
4		Trigger	1
5		Valve Stem	1
7		O-Ring (4.47x1.78)	1
24		Screw (M3x5)	1
34		Pin (2x21.8)	1
D	8940175337	Trigger Kit	
		Include 4,5,7,24 & 34	
E	8940175338	Rear End-Plate Kit	
2		Pin ((2x6)	1
14		Rear End Plate	1
23		Ball Bearing (686zz)	1
F	8940175339	Front End-Plate Kit	
2		Pin ((2x6)	1
12		Spring Pin (1.5x4)	1
13		Ball Bearing (696zz)	1
19		Front End Plate	1
21		Ball Bearing (698zz)	1

Ref	CP Part No.	Description	Q'ty
G	8940175340	Gear Box Kit	
22		Internal Gear	1
25		Pin (3.97x10.8)	2
26		Cage	1
27		Planet Gear	2
28		Bushing	2
H	8940175341	Service Gear Kit	
		Include 25(x2), 27(x2) & 28(x2)	
SP	8940175342	Small Parts Kit	
		Include 2(x2), 3, 6, 12, 17, 24, 31, 33 & 34	
TK	8940175343	Tune-Up Kit	
		Include 7, 11 & 16	

15	8940158738	Rotor	1
16	8940158741	Rotor Blades (Set of 5)	1
18	8940175317	Cylinder	1
20	8940158685	Ball Bearing (6000zz)	1
30	8940175323	Clamp Nut	1
32	8940175326	Key Chuck (1/4") & Key (Not Shown)	1

Recommended Accessories

	8940175311	Protecto-lube Oil		Airoilene Oil	
	Chuck Guard	CA149661 (4 oz - 0.12 l)		P089507 (1 gal - 3.8 l)	
		CA000046 (20 oz - 0.59 l)			

Rely only on high-grade air drills and drivers offered on our virtual shelves.