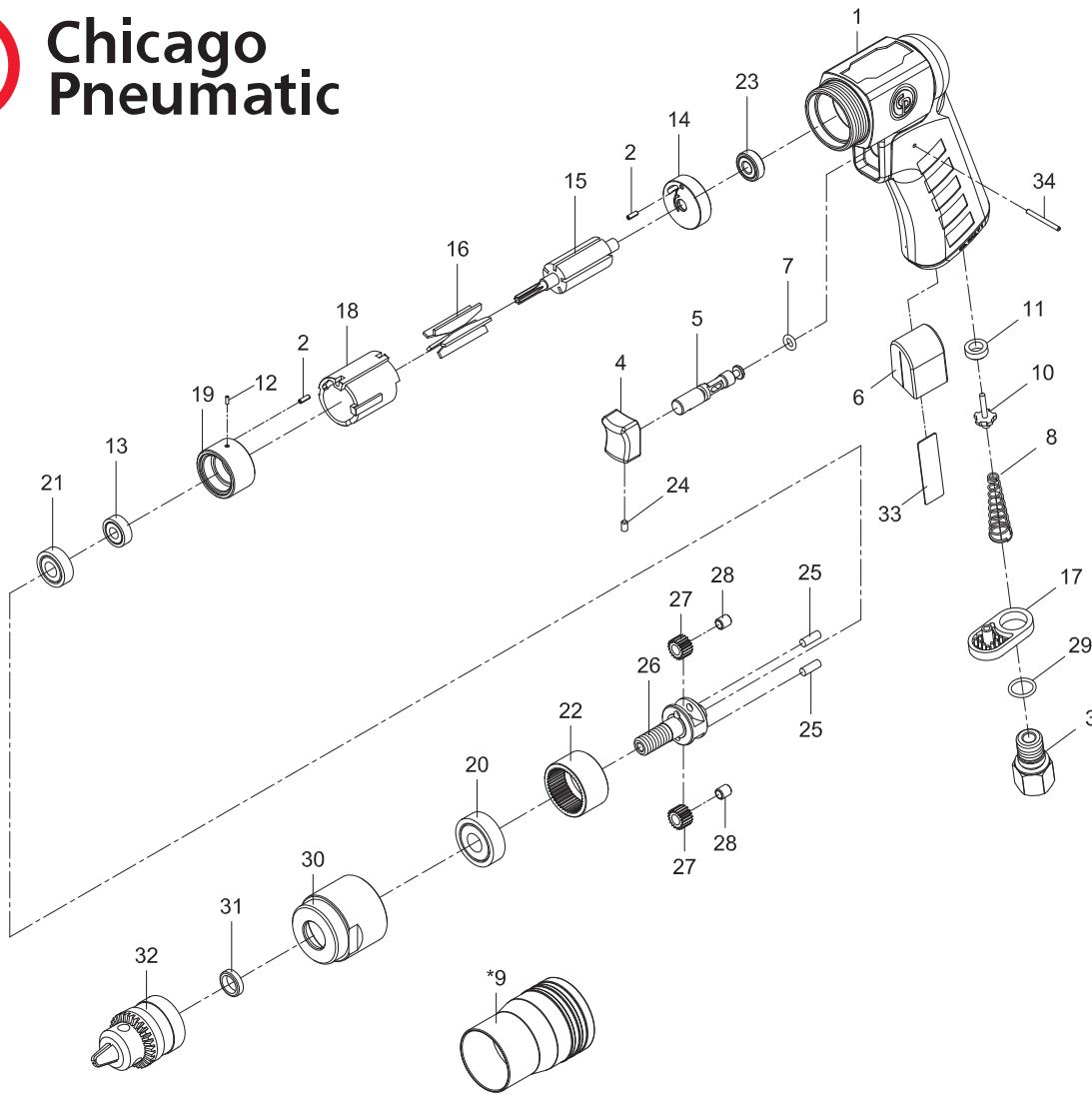




**Chicago  
Pneumatic**

**CP7300C**  
**1/4" KEY DRILL**  
**Serie D**



Item	Glue	Tightening torque
01 - 03	Loctite 243	7.3 ft.lb - 10 Nm
01 - 30		29.5 ft.lb - 40 Nm

Ref	CP Part No.	Description	Q'ty
<b>A</b>	<b>8940175334</b>	<b>Throttle Kit</b>	
8		Spring	1
10		Valve	1
11		Valve Seat	1
<b>B</b>	<b>8940175335</b>	<b>Inlet Kit</b>	
3		Air Inlet	1
17		Exhaust Diffuser	1
29		O-Ring (10.7x1.5)	1
<b>C</b>	<b>8940175336</b>	<b>Motor Housing Kit</b>	
1	8940175306	Motor Housing With Grip	1
4		Trigger	1
5		Valve Stem	1
7		O-Ring (4.47x1.78)	1
24		Screw (M3x5)	1
34		Pin (2x21.8)	1
<b>D</b>	<b>8940175337</b>	<b>Trigger Kit</b>	
		Include 4,5,7,24 & 34	
<b>E</b>	<b>8940175338</b>	<b>Rear End-Plate Kit</b>	
2		Pin ((2x6)	1
14		Rear End Plate	1
23		Ball Bearing (686zz)	1
<b>F</b>	<b>8940175339</b>	<b>Front End-Plate Kit</b>	
2		Pin ((2x6)	1
12		Spring Pin (1.5x4)	1
13		Ball Bearing (696zz)	1
19		Front End Plate	1
21		Ball Bearing (698zz)	1

Ref	CP Part No.	Description	Q'ty
<b>G</b>	<b>8940175340</b>	<b>Gear Box Kit</b>	
22		Internal Gear	1
25		Pin (3.97x10.8)	2
26		Cage	1
27		Planet Gear	2
28		Bushing	2
<b>H</b>	<b>8940175341</b>	<b>Service Gear Kit</b>	
		Include 25(x2), 27(x2) & 28(x2)	
<b>SP</b>	<b>8940175342</b>	<b>Small Parts Kit</b>	
		Include 2(x2), 3, 6, 12, 17, 24, 31, 33 & 34	
<b>TK</b>	<b>8940175343</b>	<b>Tune-Up Kit</b>	
		Include 7, 11 & 16	

15	8940158738	Rotor	1
16	8940158741	Rotor Blades (Set of 5)	1
18	8940175317	Cylinder	1
20	8940158685	Ball Bearing (6000zz)	1
30	8940175323	Clamp Nut	1
32	8940175326	Key Chuck (1/4") & Key (Not Shown)	1

**Recommended Accessories**

	8940175311	Protecto-lube Oil		Airoilene Oil	
	Chuck Guard	CA149661 (4 oz - 0.12 l)		P089507 (1 gal - 3.8 l)	
		CA000046 (20 oz - 0.59 l)			

Rely only on high-grade air drills and drivers offered on our virtual shelves.