

HEX-LOGIC QUANTUM

Quantum Hex-Logic Buffing Pads manipulate physics to deliver better polishing results. Blue Quantum Glazing Pads have no cut, and are perfect for spreading finishing products over painted finishes. Use the Blue Quantum Pad to spread the perfect coat of gloss-enhancing glaze like Black Light, White Light, or GlossWorx Glaze over freshly-polished paint finishes. The new Quantum design represents a great leap forward in polishing pad technology. Innovative new foam polishing pads smoothly transfer power from the polishing machine into paint while minimizing heat, wear and tear, and user fatigue. High endurance Quantum pads are designed for dual action polishers, long-throw orbital machines, and high speed rotary buffers. Quantum Hex-Logic Pads combine new pad geometry with tried-and-true Hex-Logic grooves to ensure maximum coverage, enhanced cooling, and fast and efficient work. R&D fitted the new Quantum pads with a more durable and breathable hook and loop interface plate for a stronger bond that conducts heat away from the machine and pad. The precision-cut Race Face creates a gradual tapered profile to spread out compression from the user's hands and reduce wear and tear on the foam pad. Improved manufacturing techniques, adhesives, and materials ensure that Quantum Hex-Logic Pads last longer for better polishing results job after job. By understanding the physics of polishing, Quantum Hex-Logic engineers extended the lifespan and efficiency of Quantum polishing pads by adding a Precision Port vent hole. Venting the pad where it spins the fastest reduces torque stresses on the material and channels heat away from the hottest part of the pad. Quantum polishing Pads come in the full Hex-Logic color spectrum, so there's a Quantum Pad for every compounding, polishing, and finishing job on any vehicle. Pick up the new Quantum Hex-Logic buffing and polishing pads for a polishing experience that changes everything.

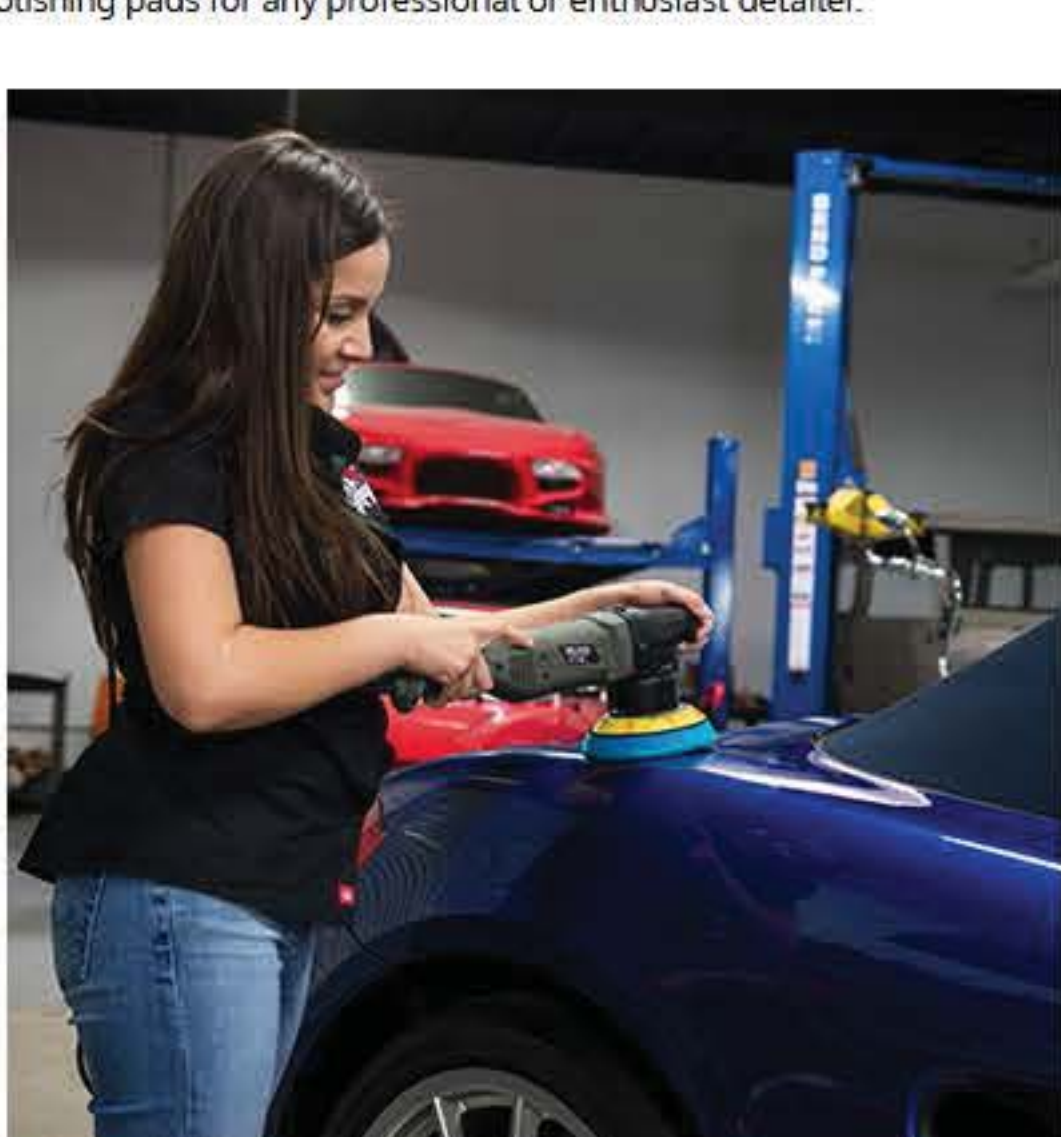
Use Blue Quantum Pads For Finishing With Glaze

Blue Quantum Pads are light duty finishing pads. While cutting and polishing pads remove paint to restore gloss and shine, finishing pads have no cut and only spread the perfect coat of glaze for added gloss and wet shine. The soft spreading action of Blue Quantum pads is perfect for applying the perfect coat of glaze with minimal product waste. Use Blue Quantum pads to spread the perfect coat of glaze like Black Light, White Light, GlossWorx, or EZ Creme Glaze. Spreading products like glaze, sealant, and wax by machine uses the smallest amount of product for maximum results with minimal product use. When used correctly, finishing pads can use one bottle to glaze dozens of vehicles by machine. Only use Blue Quantum Pads to spread glaze, sealant, or wax with a dual-action machine polisher. Spreading final coatings with a rotary polisher can leave holograms over the painted surface; only the dual-action machine mechanism is safe for spreading final protection coatings.



Buffing With Physics: Pads Designed To Take The Heat

Traditional buffing pad designs can't take the physical stresses from polishing. Regular foam pads are prone to failures in the hook and loop backing system, internal foam breakdown, and burning and melting from high speed rotation. While old school rotary polishers spin on one axis and create even stresses across a buffing pad, modern dual action machines spin and oscillate and create extra stresses and strain. With dual action mechanisms oscillating between 2mm and 26mm, extra friction and torque strain on the foam can be immense. Quantum engineers designed the new buffing pads with a Precision Port center-cut hole to reduce stresses and heat buildup in the center of the pad. The pad's center experiences the most torque stress and heat buildup, so venting the pad there eliminates the greatest tearing forces and heat that destroys pads and machines. New hook and loop backing material channels in fresh air through vented TORQ backing plates, and cools the polishing foam and machine polisher at the same time. Traditional foam pads have a recessed step-down profile from backing pad to foam buffing side; this design ensures the backing plate never touches the vehicle, but it is prone to wear from heavy-handed user input on the buffing machine. Quantum pads use a gradual Race Face tapered profile for one unbroken line from backing pad to foam buffing surface; this design spreads out any forces from the user pressing down on the machine and saves the pad from excess wear and tear. Quantum buffing pads are designed to be the best polishing pads for any professional or enthusiast detailer.



Fastest Acting Pads To Date

Machine polishers use controlled friction to gently remove damaged paint and expose a perfectly smooth and shiny surface. The combination of buffing pad, machine speed, and polishing compound affects the amount of heat generated, and how much paint is cut away. The all new Quantum polishing pads are engineered and designed to generate the safest and most efficient cutting power on today's powerful dual action and high speed rotary polishers. Quantum Pads cut quickly to remove deep defects, swirls, scratches, and oxidation, then refine the finish to restore gloss, reflection, and shine to any color paint finish. Traditional buffing pads can generate too much heat when used incorrectly, which harms paint finishes and destroys the pads themselves. Quantum Pads use advanced backing material to draw in cool air through vented backing plates, a Precision Port center hole to dissipate excess heat and torque forces, and tried and tested Hex-Logic grooves to spread product evenly and draw in fresh air as the pad rotates. The bowed Race Face profile increases buffing surface area and spreads buffing forces evenly across the backing pad for reduced strain and wear and tear. All these features deliver the fastest foam pad cut while reducing excess heat and torque tearing concerns. Quantum polishing Pads are the new standard for foam polishing pads on today's newest and fastest buffing machines.



Hex-Logic Quantum 6.5 Inch Polishing Pads

Hex-Logic Quantum Yellow Heavy Cutting	Hex-Logic Quantum Orange Medium-Heavy Cutting	Hex-Logic Quantum Green Heavy Polishing	Hex-Logic Quantum White Light-Medium Polishing
Hex-Logic Quantum Blue Polishing/Finishing	Hex-Logic Quantum Black Light Finishing	Hex-Logic Quantum Red Ultra Light Finishing	Citrus-Based Foam Pad Cleaner

Clean Pads Work Better

Polishing pads fill up with spent polish abrasives and removed paint residues as the job wears on. This residue and removed paint clogs pads and causes inconsistent polishing work during a job. All these residues can also turn into a hard cement-like mass inside foam, microfiber, and wool buffing and polishing pads if left to dry, which ruins the polishing abilities of the pad. The secret to maintaining polishing pads for years of reliable use is in keeping them clean. Clean out old compound, particle abrasives, and removed paint residues to keep pads soft, flexible, and ready for controlled paint removal. Keep one set of polishing pads and clean them during the job to maintain maximum effect and shorter polishing times, or change out between several sets of pads for nonstop polishing and clean them all at the end of the day for faster turnaround time. Keep a bottle of Chemical Guys [Polishing Pad Cleaner and Rejuvenator](#) on hand to clean, restore and prolong your buffing and polishing pads. The ergonomically designed [Foam Pad Cleaning Brush](#) scrubs wax and polishes out of the foam and restores its original texture. Professionals polishing lots of cars in a shop setting get along with the fast and thorough action of the [Grit Guard Universal Foam Washer](#), which cleans and dries all types of buffing pads on virtually any machine in seconds.

Feel the difference with Chemical Guys.

Shop for other auto detailing & care products on our website.