



QUICK START

QUICK START GUIDE



201040

7500W Dual Fuel Portable Generator

⚠ WARNING:

Read the ENTIRE operator's manual to become familiar with the features of the product before operating.

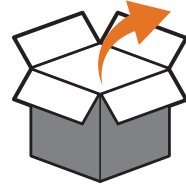
Failure to operate the product correctly can result in damage to the product, personal property and cause serious injury or even death.

CHAMPION
GLOBAL POWER EQUIPMENT

Set Up

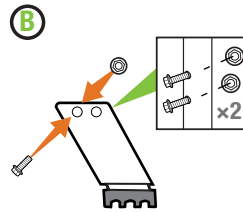
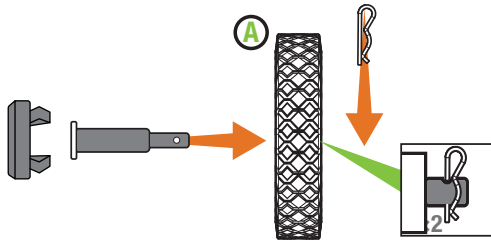
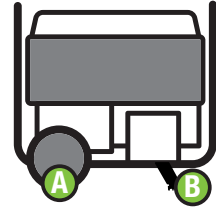
1.

Open shipping carton.  Assembly > Unpacking




2.

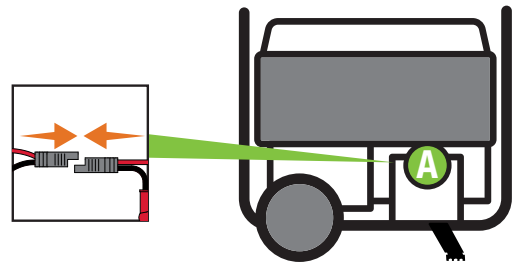
Attach wheel kit.  Assembly > Install the Wheel Kit



3.

Connect the battery.  Assembly > Connect the Battery.

Cut cable tie on each side of battery connector.
Push two halves of battery connector together tightly.

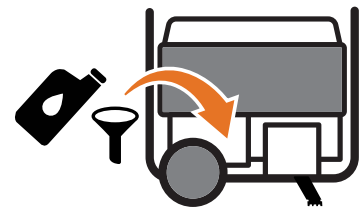


4.

Add oil.  Assembly > Add Engine Oil.

Recommended: 10W-30, up to 37.2 fl. oz. (1100 ml) DO NOT overfill.

10W-30

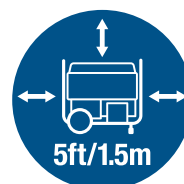


5.

Move the generator outdoors.

Move generator to an open, outdoor area.
Point exhaust away. Never run generator in
enclosed areas (e.g., not in house or garage).

Keep all objects at least 5 feet (1.5 m) from generator. Heat
from the muffler and exhaust gas can ignite combustible
materials.



6.

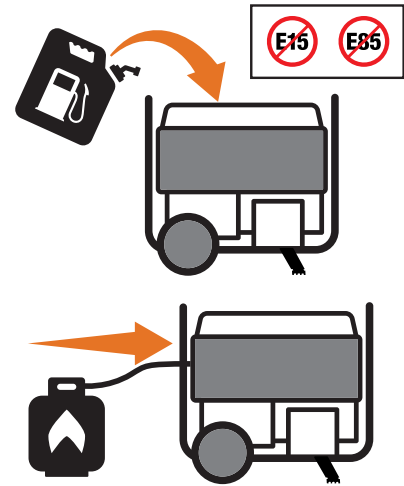
Add fuel. 📖 Assembly > Add Fuel: Gasoline

DO NOT use E15 or E85.

_____ or _____

Connect propane cylinder.

📖 Assembly > Add Fuel: Propane (LPG)

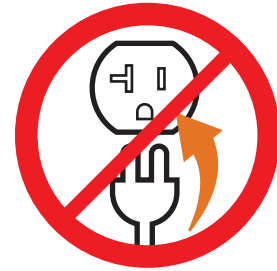


7.

DO NOT plug in any electrical devices.



NEVER START OR STOP THE GENERATOR WITH ELECTRICAL DEVICES CONNECTED OR TURNED ON!

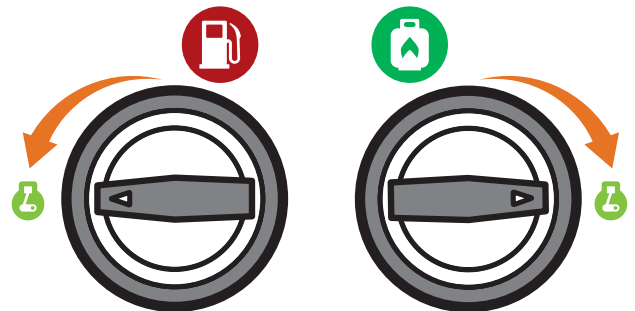


8.

Select Fuel. 📖 Operation > Starting the Engine.

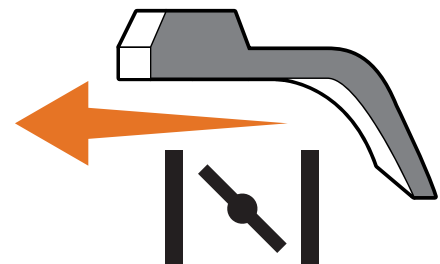
Gasoline: Turn fuel select dial to “Gasoline Run” position.

Propane: Turn fuel select dial to “Propane Run” position.



9.

Move the **choke lever** to the “CHOKE” position.



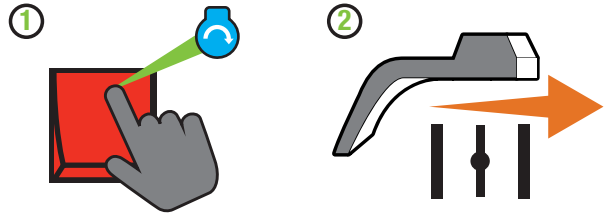
10a.



Gasoline

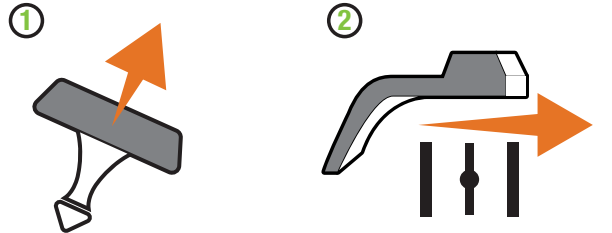
Electric Start

1. Press and hold the ignition switch to the "START" position.
2. Move the choke lever to the "RUN" position.



Manual Start

1. Pull the starter cord.
2. Move the choke lever to the "RUN" position.



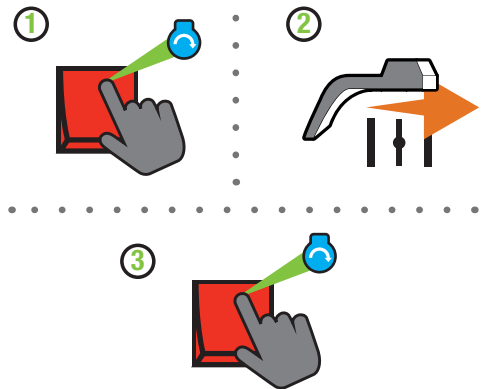
10b.



Propane

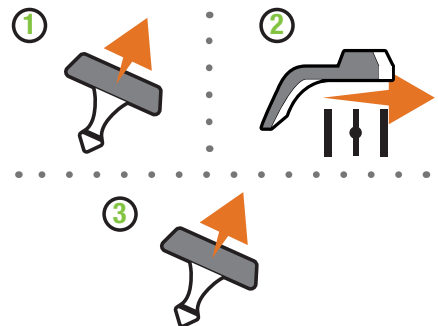
Electric Start

1. Press the ignition switch to the "START" position for 2-3 seconds.
2. Move the choke lever to the "RUN" position.
3. Press and hold the ignition switch to the "START" position.
4. If engine does not start, wait 10 seconds, then repeat step 3.



Manual Start

1. Pull the starter cord 2-3 times.
2. Move the choke lever to the "RUN" position.
3. Pull the starter cord.



11.

Plug in.  Operation > Connecting Electrical Loads.

