



QUICK START

QUICK START GUIDE



200964
3500W Wireless Start Generator

⚠ WARNING:

Read the ENTIRE operator's manual to become familiar with the features of the product before operating.

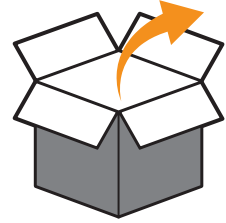
Failure to operate the product correctly can result in damage to the product, personal property and cause serious injury or even death.



Set Up

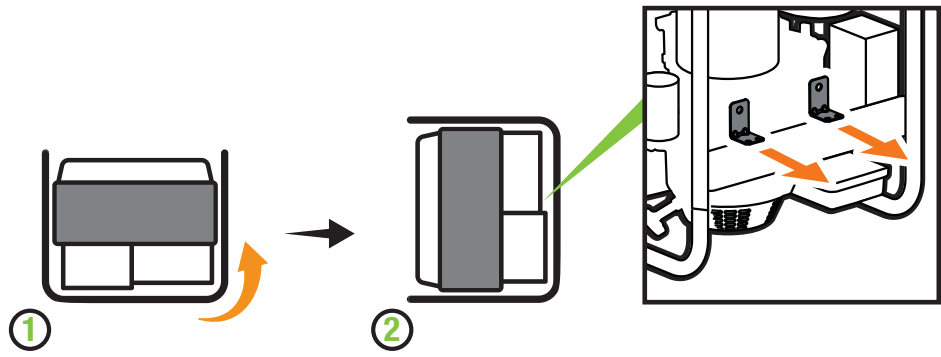
1.

Open shipping carton.  Assembly > Unboxing



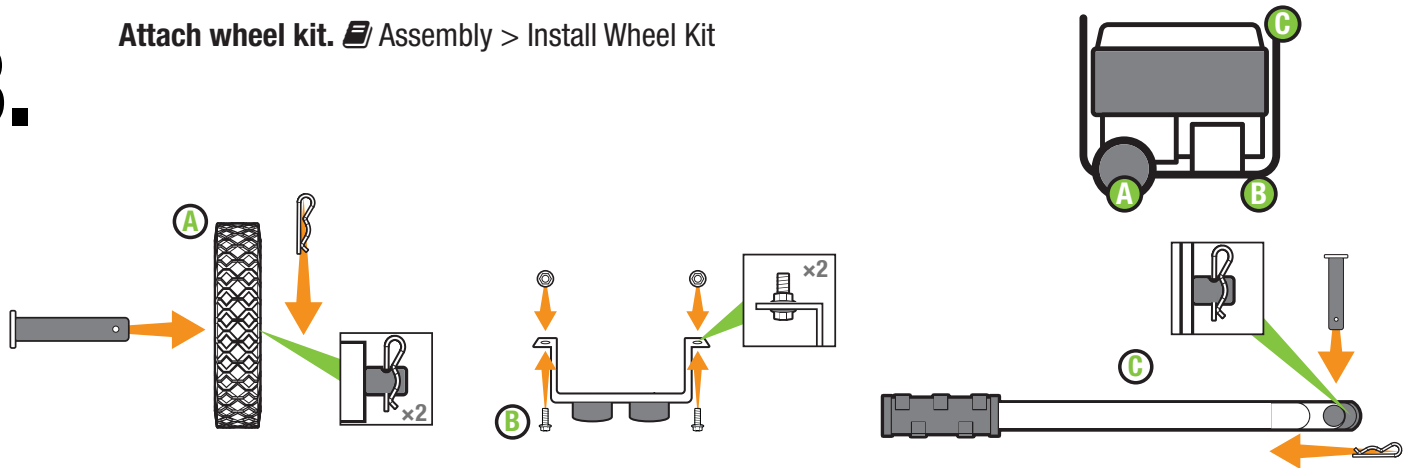
2.

Remove brackets.  Assembly > Remove Shipping Support Brackets.




3.

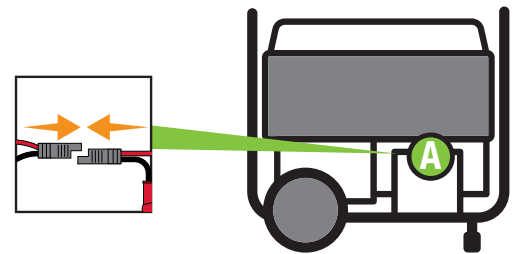
Attach wheel kit.  Assembly > Install Wheel Kit



4.

Connect the battery.  Assembly > Connect the Battery.

Cut cable tie on each side of battery connector.
Push two halves of battery connector together tightly.



5.

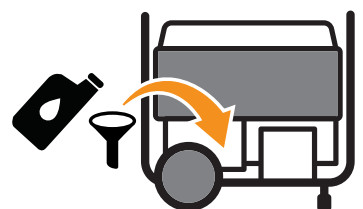
Add oil.  Assembly > Add Engine Oil.

Recommended: 10W-30, up to 16.9 fl. oz. (500 ml). DO NOT overfill.

10W-30



MAKE SURE SHIPPING BRACKETS
ARE REMOVED BEFORE ADDING OIL.



6.

Move the generator outdoors.

Move generator to an open, outdoor area. Point exhaust away. Never run generator in enclosed areas (e.g., not in house or garage).

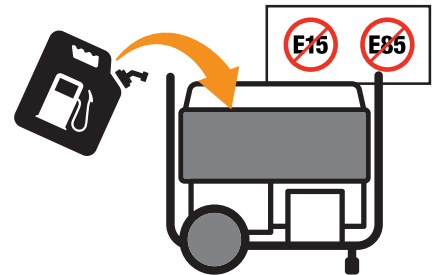
Keep all objects at least 5 feet (1.5 m) from generator. Heat from the muffler and exhaust gas can ignite combustible materials.



7.

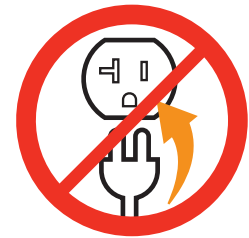
Add fuel. Assembly > Add Fuel

DO NOT use E15 or E85.



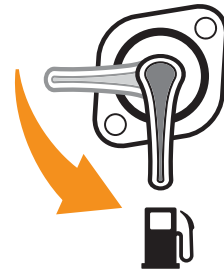
8.

DO NOT plug in any electrical devices.



9.

Turn the **fuel valve** "ON".



10a.

Wireless Start

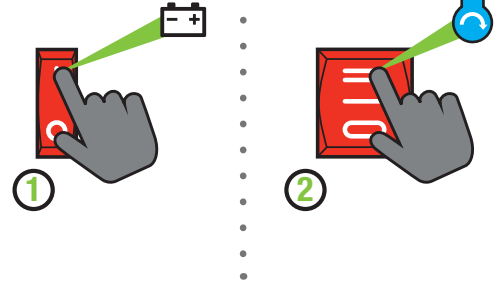
1. Push the **battery switch** to the "ON" position.
2. Push the **ignition switch** to the "ON" position.
3. Press and release the "START" button on the remote control.



10b.

Electric Start

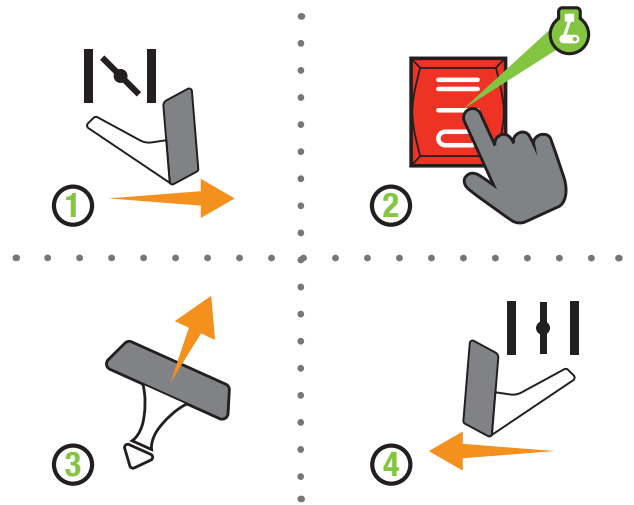
1. Push the **battery switch** to the “ON” position.
2. Press and hold the **ignition switch** to the “START” position.



10c.

Manual Start

1. Move the **choke lever** to the “CHOKE” position.
2. Push the **ignition switch** to the “ON” position.
3. Pull the **starter cord**.
4. Move the **choke lever** to the “RUN” position.



11.

Plug in. 📖 Operation > Connecting Electrical Loads.

