



# QUICK START

QUICK START GUIDE



**200963**  
3500W Portable Generator

**⚠ WARNING:**

Read the ENTIRE operator's manual to become familiar with the features of the product before operating.

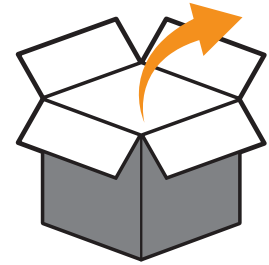
Failure to operate the product correctly can result in damage to the product, personal property and cause serious injury or even death.

**CHAMPION**  
GLOBAL POWER EQUIPMENT

# Set Up

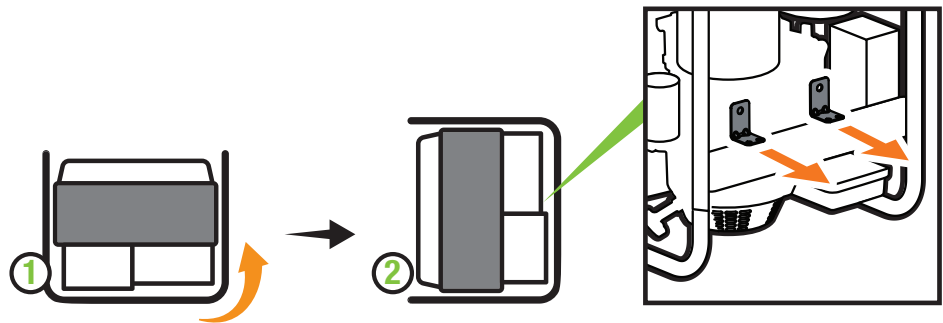
# 1.

Open shipping carton.  Assembly > Unboxing



# 2.

Remove brackets.  Assembly > Remove Shipping Support Brackets.



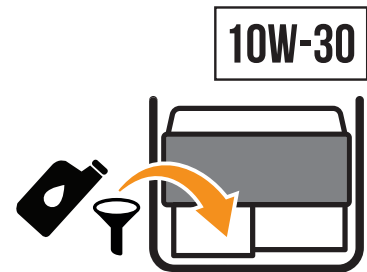
# 3.

Add oil.  Assembly > Add Engine Oil.

Recommended: 10W-30, up to 16.9 fl. oz. (500 ml) DO NOT overfill.



**MAKE SURE SHIPPING BRACKETS  
ARE REMOVED BEFORE ADDING OIL.**



# 4.

**Move the generator outdoors.**

Move generator to an open, outdoor area. Point exhaust away. Never run generator in enclosed areas (e.g., not in house or garage).

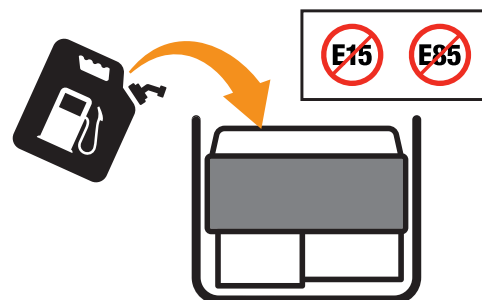
Keep all objects at least 5 feet (1.5 m) from generator. Heat from the muffler and exhaust gas can ignite combustible materials.



## 5.

**Add fuel.** 📖 Assembly > Add Fuel

**DO NOT** use E15 or E85.

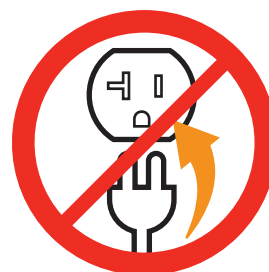


## 6.

**DO NOT plug in** any electrical devices.



**NEVER START OR STOP THE GENERATOR WITH ELECTRICAL DEVICES CONNECTED OR TURNED ON!**



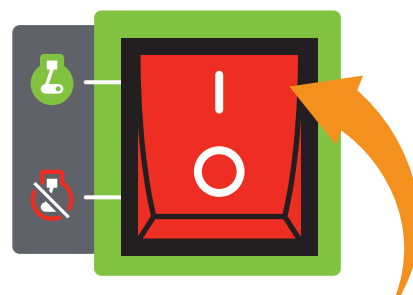
## 7.

Turn the **fuel valve** "ON".



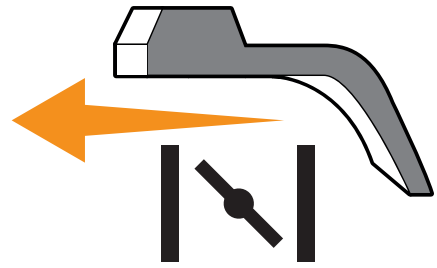
## 8.

Press the **engine switch** to the "ON" position.



## 9.

Move the **choke lever** to the “CHOKE” position.



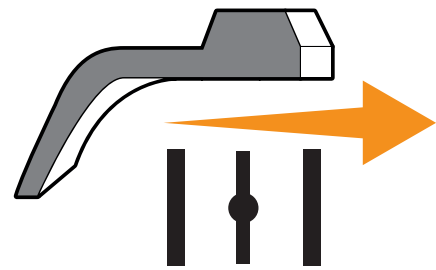
## 10.

Pull the **recoil** to start the engine.



## 11.

Move the **choke lever** to the “RUN” position.



## 12.

**Plug in.** 📖 Operation > Connecting Electrical Loads.

