



Cal-Van
TOOLS

2019 2020 2021 2022

PRODUCT CATALOG



A LEADER IN SPECIALTY TOOL
DESIGN AND MANUFACTURING
SINCE 1939

WHAT DOES CAL-VAN TOOLS REPRESENT?

For nearly a century, Cal-Van Tools remains at the forefront of automotive specialty tool design and manufacturing. We continue to meet the needs of our customers, from professional technicians to the "do-it-yourself" individuals relying on our products to maintain pace as technology advances. We take pride in our ability to adapt and keep stride with every step the automotive industry takes while moving forward. Cal-Van Tools is continuously searching for the most effective methods to make jobs easy and save our customers money. Our innovations drive your profits.

WHAT IS THE WARRANTY?

All products from Cal-Van Tools are engineered and manufactured to the highest standards of quality. Most of our tools are backed by a Limited Lifetime Warranty that guarantees tools from manufacturing and materials defects. Any product failing during intended use, while in the warrantable period, may be returned to the point of purchase for warranty. We have the option to repair or replace any tool found to be defective in workmanship or material.

Warranty does not apply to products worn beyond their serviceable life, have been abused, altered, or misused in any way. This warranty does not apply to wearable items, including but not limited to hone stones, razor blades, bulbs, files, snap rings, dies, rethreaders, drills, or cutting tools.

This warranty provides you specific legal rights, and you may also have other rights that can vary depending on your state laws.

WHAT ARE CAL-VAN'S CORE VALUES?

Our integrity is based on four steadfast commitments in all we do:

BE A SOLUTION PROVIDER - Focus on the needs of our customers; today, tomorrow, and beyond.

HONOR AND RESPECT - Observe *The Golden Rule* by keeping commitments to our customers and partners. Keep in mind our success is measured by the success of our customers.

ACT WITH INTEGRITY - If it is wrong, do not do it. The easy way is not always the best path.

CUSTOMER FOCUSED AND CUSTOMER DRIVEN - We are accountable for the best interest of our customers, continually working to provide products meeting every want and need.



2019 2020 2021 2022

PRODUCT CATALOG

OUR CATALOG TABLE OF CONTENTS

2019 2020 2021

1 **ENGINE**

- Belt Tools
- Engine Cooling
- Subaru Specific Tools
- Cylinder and Piston Tools
- Installation Tools
- Thread Repair (Cylinder Head)

2 **FUEL, IGNITION, AND EMISSION SYSTEMS**

- Emission Tools
- Cylinder and Piston Tools

3 **ELECTRICAL AND DIAGNOSTIC**

- Diagnostic and Testing
- Radio and Antenna Tools
- Alternator Service
- Battery Maintenance

4 **PULLERS AND INSTALLERS**

- Bearing Pullers and Separators
- Driveline Tools
- Multi-Use Pullers
- Stud and Dowel Removal

5 **FILTERS, LUBRICATION, AND MAINTENANCE**

- Filter Pliers
- Strap Wrenches
- General Maintenance Tools
- Cup-Style Filter Wrenches
- Adjustable Filter Wrenches

6 **BRAKE TOOLS**

- Brake Caliper Tools
- Brake Bleeding
- Hones
- General Brake Tools

7 **TUBING FABRICATION**

- In-Line Flaring Tools
- Tubing Cutting and Fabrication
- Basic Flaring Tools

8 **SUSPENSION AND WHEEL**

- Suspension Tools
- Wheel and Hub
- Front End and Steering

9 **GENERAL HAND TOOLS**

- Ratcheting and Wrenches
- Pliers
- Damaged Fasteners
- General Use Tools
- Ratchet Accessories
- Torx Tools
- Inspection and Pick-Up Tools

10 **PAINT, BODY, SCRAPERS, AND KNIVES**

- Trim and Upholstery Tools
- Knives and Scrapers



INNOVATION. DEPENDABILITY. QUALITY

CHAPTER 1 - ENGINE**General Belt Tools**

	<i>Page</i>
730 Magnetic Belt Holder	12
734 The Grabber Serpentine Belt Tool	12
738 Serpentine Belt Tool	12
735 Euro Stretch Belt Tool	12
736 Stretch Belt Installation Tool	12
737 Subaru Stretch Belt Tool	12

Cylinder and Piston Tools

360 Engine Cylinder Hone 2" to 7" Capacity	13
32300 Adjustable Cylinder Hone and Deglazer	13
641 Interchangeable, Ratcheting Piston Ring Compressor Set	13

Engine Cooling

244TNZ 4-PC. Heater Hose Disconnect Set	13
751 GM Thermostat Wrench	13
752 Variable Pin Spanner Wrench	14

Installation Tools

171 Ford 6.0L Diesel Head Bolt Adapter	14
195 Power Steering Pump Removal and Installation Kit	14
386 Harmonic Balancer Puller	14
499 7.3 Ford Diesel Rear Main Seal and Sleeve Removal and Installation Kit	14
980 Crankshaft Bolt Socket Set	15
38500 Master Harmonic Balancer and Puller Installer	15
38700 Long Reach Harmonic Balancer and Pulley Installer	15
38710 Ford EcoBoost Long Reach Harmonic Balancer Installer	15
38800 Harmonic Balancer Kit	16
38000 Ratcheting Harmonic Balancer Puller	16
38100 Ford and Mazda Crankshaft Holder	16
38110 Ford Harmonic Balancer Holder	16

Subaru Specific Tools

754 3-in-1 Subaru Sprocket Tool	16
7541 Subaru Pulley and Sprocket Bolt Bit	17
198 Subaru Crank Pulley Tool	17

Thread Repair

38900 Two Valve Ford Triton Spark Plug Thread Repair Kit	17
39100 Ford Triton Spark Plug Extractor Kit	17
39200 Ford Triton Spark Plug Porcelain Extractor Kit	17
39300 Three Valve Ford Triton Insert Repair Kit	18
39500 Ford Triton Broken Spark Plug Extractor Kit	18

CHAPTER 2 - FUEL, IGNITION, AND EMISSION SYSTEMS

Emission Tools		<i>Page</i>
841	11-PC. Oxygen Sensor Socket Set	18
841-11	Sensor Thread Chaser (M18 x 1.5)	18
842	7-PC. Oxygen Sensor Socket Set	19
843	Oxygen Sensor Wrench	19
844	Combination 6-Pt. and 12-Pt. Oxygen Sensor Wrench	19
Fuel and Ignition System Tools		
64	High Energy Ignition Tester	19
65	Noid Light Set	19
612	Adjustable Spark Tester	20
693	Ignition Point Files	20
253	Fuel Tank Locking Ring Tool	20
684	Line Disconnect Tools	20
683	Master Line Disconnect Tool Set	20
689	Fuel Line Pliers	20

CHAPTER 3 - ELECTRICAL AND DIAGNOSTIC

Diagnostic and Testing		<i>Page</i>
55000	11-PC. Deutsch Terminal Service Kit	21
55100	6-PC. Deutsch Terminal Service Kit	21
55004	Open Barrel Crimping Pliers	21
55005	Terminal Crimping Pliers	21
611	17-PC. Back Probe Kit	21
613	20-PC. Back Probe Kit	21
69	Amp Alert	22
70	Heavy Duty Circuit Tester	22
78	LCD Test Light	22
81	Logic Light	22
63	Window Tint Meter	22
74	AmpHound	22
72	AmpHound 2	23
73	Ripple Quick Tester	23
76	Relay Circuit Pro	23
84	WiFi Borescope	23

Alternator Service		<i>Page</i>
750	22-PC. ADP (Alternator Coupler Pulley) Master Set	24
756	5-PC. ADP (Alternator Coupler Pulley) Bit Set	24
Radio and Antenna Tools		
135	Ford Radio Removal Tool	24
142	Antenna and Radio Tool Set	24
Battery Maintenance		
549	Terminal Clamp Spreader	24
553	Heavy Duty Battery Post and Terminal Cleaner	24

CHAPTER 4 - PULLERS AND INSTALLERS

Bearing Pullers and Separators		<i>Page</i>
503	Bearing Splitter 4-¼" Capacity	25
508	Small Bearing Splitter	25
509	Medium Bearing Splitter	25
511	Large Bearing Splitter	25
501	7-ton Bar-Type Puller and Bearing Splitter	25
502	5-ton Bar-Type Puller and Bearing Splitter	25
Multi-Use Pullers		
956	9-Way Slide Hammer Pulley Set	25
240	4" Adjustable Two-Jaw Puller with 4" Spread	25
941	3 ½" Adjustable Two-Jaw Puller with 6" Spread	25
942	5 ½" Adjustable Two-Jaw Puller with 7" Spread	25
134	3 ½" Two and Three-Jaw Combination Puller with 4" Spread	26
951	3 ½" Two and Three-Jaw Combination Puller with 7" Spread	26
952	5 ½" Two and Three-Jaw Combination Puller with 8" Spread	26
187	Steering Wheel Puller	26
192	Pulley Puller	26
957	Adjustable Three-Legged Puller with 5" Capacity	26
49700	14-PC. Light-Duty Slide Hammer	26

<i>Driveline Tools</i>		<i>Page</i>
905	Light Duty U-Joint Puller	27
907	Intermediate U-Joint Puller	27
199	Heavy Duty U-Joint Puller	27
497	Heavy-Duty Yoke Puller	27
18510	Bolt Retained Bearing Cup Installer	27
20200	Magnetic Bearing Cup Installer	27
20	Clutch Alignment Tool	28
28	Pilot Bearing Puller with Slide Hammer	28
29	Blind Hole Bearing Puller	28
31	Pilot Bearing Puller	28
189	Harmonic Balancer Puller	28
506	Adjustable Seal Driver	28
49500	13" Seal Puller with Slide Hammer	28
49600	17" Heavy Duty Seal Puller with Slide Hammer	29
91800	Rear Axle Bearing Puller Set	29

Stud and Dowel Removal

95200	In-Line Dowel Pin Pullers	29
95300	In-Line Dowel Pin Pullers	29
95400	In-Line Dowel Pin Pullers	29
95500	Stud Removal Sets	29
95550	Stud Removal Sets	29
19	Stud Remover	30
95600	SAE Stud Removal and Installation Set	30
95700	Metric Stud Removal and Installation Set	30

CHAPTER 5 - FILTERS, LUBRICATION, AND MAINTENANCE

<i>Band Style Filter Wrenches</i>		<i>Page</i>
967	4-in-1 Swivel Filter Wrench	30
993	Swivel Filter Wrench 2 3/8" to 2 7/8"	30
994	Swivel Filter Wrench 2 7/8" to 3 1/4"	30
995	Swivel Filter Wrench 3 7/16" to 3 3/4"	30
999	Swivel Filter Wrench 4" to 4 3/8"	30
989	Swivel Filter Wrench 4 15/16" to 4 3/4"	31
991	XL Swivel Filter Wrench 4 15/16" to 4 3/4"	31
891	Heavy Duty Filter Wrench 4 1/8" to 4 21/32"	31
892	Heavy Duty Filter Wrenches 4 21/32" to 5 5/32"	31
893	Heavy Duty Filter Wrenches 5 5/32" to 5 21/32"	31

TABLE OF CONTENTS

	<i>Page</i>
<i>Oil Filter Pliers</i>	
291 Adjustable Truck and Tractor Filter Pliers	31
297 Filter Pliers 2 ¾" to 3 ¼"	31
298 Filter Pliers 3 ⅜" to 3 ⅝"	31
302 Adjustable Filter Pliers 2 ¼" to 5 ¾"	31
29900 Adjustable Truck and Tractor Filter Pliers 3 ¾" to 7 ½"	31
29200 Large and Small Filter Plier Set	32
<i>Cup-Style Filter Wrenches</i>	
785 Cup-Style Filter Wrench 65mm (2 9/16")	32
788 Cup-Style Filter Wrench 74mm - 76mm (2 29/32" – 3")	32
789 Cup-Style Filter Wrench 76 mm (3")	32
791 Cup-Style Filter Wrench 93mm (3 21/32")	32
<i>Strap-Style Filter Wrenches</i>	
803 Heavy-Duty Filter Strap Wrench	32
814 All Size Filter Strap Wrench	32
<i>Adjustable Filter Wrenches and Sockets</i>	
987 Heavy Duty Three-Legged Filter Wrench	33
988 Three-Legged Filter Wrench	33
996 Oil Filter Socket Set (27mm, 21mm, 36mm)	33
<i>General Maintenance Tools</i>	
610 Diesel Exhaust Fluid Tester	33
38200 4-PC. Oil Pan Drain Plug Removal Kit	33
38400 10-PC. Oil Pan Drain Plug Repair Kit	33

CHAPTER 6 - BRAKE TOOLS

	<i>Page</i>
<i>Brake Caliper Tools</i>	
700 Universal Brake Pad Spreader	34
702 Brake Pad Spreader	34
727 Universal Caliper Turn and Push Back Tool	34
722 Multi-Sided Caliper Piston Rewind Tool	34
723 Combination 2-Pin and 3-Pin Caliper Piston Rewind Tool	34
724 2-Pin and 3-Pin Caliper Piston Rewind Adapter Set	34
62 Brake Fluid Tester (DOT 4 Only)	35
66 Brake Fluid Tester (DOT 3 / DOT 4 / DOT 5.1)	35

Hones		<i>Page</i>
762	Sub-Compact Brake and Engine Hone ½" to 2 ¼"	35
357	Brake and Engine Hone 1¼" to 3 ½"	35
358	Brake and Engine Hone ¾" to 2 ½"	35
362	Adjustable Brake and Engine Hone ¾" to 2 ½"	36
33000	Multi-Hone Set with Combined Capacity ¾" to 3 ½"	36

Brake Bleeding

855	Brake Bleeder Tank	36
24700	One Person Brake Bleeder Tool	36
36700	S-Cam Tool	36
364	Brake Spring Tool	37

CHAPTER 7 - TUBING FABRICATION

In-Line Flaring Tools

		<i>Page</i>
165	Master In-Line Flaring Tool Set	37
166	In Line Flaring Tool	37
154	In-Line Flaring Tools	37
161	In-Line Flaring Tools	37
164	In-Line Flaring Tools	37
160	Handheld Brake Flaring Tool	38

Basic Flaring Tools

153	Metric Double Flaring Tool	38
163	SAE Double Flaring Tool	38
82700	Metric Bubble Flaring Tool Set	38
82800	12-PC. Metal Tubing Service Kit	38
82900	SAE and Metric Tube Flaring Kit	39

Tubing Cutting and Fabrication

151	Mini Tube Cutter ⅛" to ⅝"	39
159	Mini-Mini Constant Pressure Tubing Cutter up ⅝"	39
157	Constant Pressure Tubing Cutter 3/16" to ⅞"	39
158	Constant Pressure Tubing Cutter ⅛" to 1 ⅛"	39
169	Double Deburr Tool	39
758	Heavy Duty Tubing Bender	39
75902	Tube Bend Mirror Adapters	39

CHAPTER 8 - SUSPENSION AND WHEEL**Suspension**

	<i>Page</i>
91300 Floor Mounted Strut and Spring Compressor	40
200 Torsion Bar Tool	40
90200 Master Spring Compressor Set	41
513 Master MacPherson Strut Tool Set	41
512 MacPherson Strut Tool	41
510 Coil Spring Compressor	41
91000 Coil Spring Clamps	41

Front End and Steering

197 Ball Joint Super Set	41
196 Ball Joint Removal and Installation Kit	42
185 Front End Service Kit	42
182 Tie Rod End Tool	42
184 Ball Joint Separator	42
186 Pitman Arm Puller	42
188 Outer Tie Rod Arm Puller	42
194 Tie Rod Arm Puller	42
504 Bushing Driver Set	43
946 Inner Tie Rod Removal Tool	43
947 Heavy-Duty Tie Rod Removal Tool	43

Wheel and Hub

839 6-PC. 4WD Locknut Socket Set	43
966 8-PC. 6-Point Axle Nut Socket Set	43
976 8-PC. 12-Point Axle Nut Socket Set	44
90703 Dodge Hub Nut Socket	44
977 Toyota Hub Nut Socket	44
90700 Dodge and Ford Hub Removal Tool	44
90701 Dodge Hub Removal Tool (Formerly 90300)	44
90702 Ford Hub Removal Tool Adapter for Use with 90701	45
904 Wheel Bearing Tool Set	45
94800 Hub Puller	45
526 Flange-Type Axle and Hub Puller	45
332 Wheel and Hub Resurfacing Kit	45
75510 16-PC Master Wheel Locking Nut Key Set	45
16 Quick-Change Wheel Stud Cleaner Kit	46

CHAPTER 9 - GENERAL HAND TOOLS

Ratchet and Wrenches

	<i>Page</i>
906 Finger Bit Driver Variation	46
90620 Finger Bit Driver Merchandiser	46
90630 Finger Bit Driver Merchandiser	46
100 Master Finger Bit Driver Set	46
104-03 Finger Socket Driver 3-Pack	46
108-BLUE ¼" Mini Finger Ratchet	46
109-BLUE ⅜" Mini Finger Ratchet	46
450 Tight Access Drive Ratchets with ⅜" Drive Adapter	47
480 ½"-Drive Extendable Breaker Bar	47
668 Pistol-Grip, Multi-Angle, Ratcheting Screwdriver with LED Light	47

Ratchet Accessories

482 90-Degree Gearless Angle Drive (¼")	47
483 90-Degree Gearless Angle Drive (⅜")	47
485 45-Degree Gearless Angle Drive (¼")	47
487 Driver Adapters	47
488 Twin Spin Driver Converter (¼" to ⅜")	48
489 Twin Spin Driver Converter (⅜" to ½")	48
490 Versa-Drive 2-in-1 Adapters	48
48100 Master Ratchet Accessory Set	48

Pliers

47 Light Bulb Pliers	48
52 Oetiker Clamp Pliers	48
54 Indexing Push-Pin Pliers	49
58 45-Degree Offset Universal Hose Clamp Pliers	49
59 Universal Hose Clamp Pliers	49
1016 12-PC. Snap Ring Plier Set	49
48 Offset Snap Ring Pliers	49
49 Snap Ring Pliers	49
16000 Radiator Hose Pinch-Off Pliers	50
16500 Heavy Duty Pinch Off Pliers	50

Torx Tools

934 52-PC. Torx Bit Master Set	50
933 36-PC. Torx Bit Set	50
932 12-PC. Torx Bit Set with Holder (T-10 through T-55)	50
912 Extra-Long Torx Screwdriver Set	51
917 Extra-Long Tamper-Proof Torx Screwdriver Set	51
935 5-PC. MorTorq Bits with Rail	51

		<i>Page</i>
<i>Damaged Fasteners</i>		
342	Metric Stripped Hex Screw Removers	51
343	SAE Stripped Hex Screw Removers	51
439	9-PC. Metric Stripped Hex Head Screw	51
440	8-PC. SAE Stripped Hex Head Screw	52
438	Spiral Screw Extractors	52
441	Tapered Screw Extractors	52
<i>Inspection and Pick Up Tools</i>		
21	9-3/4" 4-PC. Hook and Pick Set	52
22	9-3/4" 6-PC. Hook and Pick Set	52
23	Telescoping Magnetic Pick-Up Tool, 16 lbs. Strength	52
25	Telescoping 2" Round Inspection Mirror	53
27	Telescoping Inspection Mirror	53
30	Telescoping Magnetic Pick-Up Tool, 16 lbs. Strength	53
32	2-3/8" Round Telescoping LED Inspection Mirror	53
33	Magnetic Pick-Up Tool and LED Pen Light	53
35	Rectangular LED Lighted Inspection Mirror	53
39	O-Ring Hook and Seal Pick	53
226	Adjustable Magnetic Pick-Up Tool	54
287	Telescoping Magnetic Pick-Up Tool	54
627	Hook and Pick	54
<i>General Tools</i>		
119	Magnetic Bit Rail	54
264	Parts Cleaning Brush	54
351	All-Purpose Awl	54
353	Denailer	54
764	Exhaust Pipe Cutter	55
767	Ratcheting Tubing and PVC Cutter	55
878	Ratcheting Chain Wrench	55

CHAPTER 10 - PAINT, BODY, SCRAPERS, AND KNIVES

Trim and Upholstery Tools

	<i>Page</i>
112 3-PC. Non-Marring Pick Set	55
113 5-PC. Clip Lifters	55
114 3-PC. XL Clip Lifter Set	55
115 27-PC. Clip Lifters	56
116 Mini Pry Bar Set	56
117 5-PC. Trim Remover Set	56
118 11-PC. Trim Tool Kit	56
125 5-PC. Trim Tool Kit	56

Clip Pliers

55 Body Clip Pliers	56
56 Recessed Body Clip Pliers	56

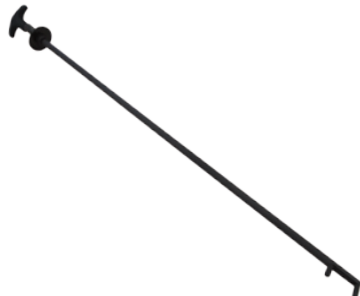
Knives and Scrapers

17 24" Urethane Cut Out Knife	57
26 18" Urethane Cut Out Knife	57
136 4-PC. Putty Knife Scraper Set	57
536 Monster Knife	57
536-4 4-PC. Monster Knife Merchandise	57
701 Mini Scraper	57
701-30 Mini Scraper Merchandiser	58
701-50 Mini Scraper Merchandiser	58
536-700 Mini Razor Knife (Individual)	58
717 Extended Razor Blade Scraper	58
747 Scraper-Mate Sticker Remover	58
709 Poly Guard Blades	58
52600 4-PC. Scraper Set	58



730 Magnetic Belt Holder

- Provides an “extra hand” installing drive belts by keeping them from falling off pulleys
- Supplied with a magnet that firmly holds belt to pulley
- Multiple belt holders can be used during application



734 “The Grabber” Serpentine Belt Tool

- Clamping jaw allows user to position serpentine belt without the belt slipping out of the tool
- Tru-grip and long reach allows belt routing in tight access areas that would normally be difficult if not impossible
- Body made of light-weight alloy steel for durability and strength
- Ergonomic handle provides comfort and ease in use, acting as an extension of the user’s hand
- Patent Pending

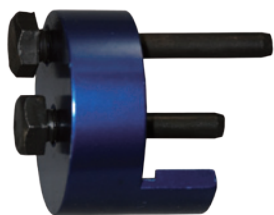


738 Serpentine Belt Tool

- Fits tensioner pulleys with 13mm-16mm, 18mm hex or 3/8” and 1/2” square drives
- For hard to access tensioners

Includes:

13mm and 15mm 12-point wrenches built into the handle, 13mm, 14mm and 15mm crows foot wrenches



735 Euro Stretch Belt Installation Tool

Stretch belts are extremely difficult to install and easily damaged if not using the right tool. This tool makes the job effortless, stretching the belt and guiding it into place.

- Quickly and easily installs stretch belts without damage to the belt or pulley
- Two pin configurations to accommodate multiple designs found on many European vehicles
- Stretch belts are being used more often in new vehicles making this tool more necessary
- Patented



736 Stretch Belt Installation Tool

- Quickly and easily installs stretch belts without damage to the belt or pulley
- Stretch belts are being used more often in new vehicles making this tool more necessary
- Patented



737 Subaru Stretch Belt Installer

All 2008 to current models of Subaru Impreza, Outback, and Forester models feature a stretch belt. When replacing these belts, traditional tools and even current “stretch belt tools” will not work due to access issues.

- Quickly and easily installs stretch belts without damage to the belt or pulley
- Stretch belts are being used more often in new vehicles making this tool more necessary

360 Engine Cylinder Hone, 2"-7"

Extremely versatile hone for 2" to 7" (56mm - 178mm) diameter cylinders found on cars, trucks, buses, tractors, industrial engines, and small air-cooled engines. Use with a high or low speed drill.

- Flexible shaft, controlled spring action; spread control limiters are features that contribute to faster changing from one cylinder to another
- Fast cutting action
- Includes with 4" (102mm) medium grit stones

Replacement hones:

361, 220-240 med. grit set (3), **361-01**, 400 fine grit set (3), **361-02**, and 100 coarse grit set (3)



32300 Adjustable 2"-5" Cylinder Hone Deglazer

An extremely versatile hone for 2" to 5" (56mm - 127mm) diameter cylinders for many applications.

- For use with a high or low speed drill
- Adjustable, knurled tension knob controls pressure for varying diameter cylinders
- Fast cutting action

Replacement Stones:

32400, 220-240 med. grit set (3)



641 Piston Ring Compressor Set

- 7-piece set installs piston rings from 2-7/8" to 4-3/8" (73mm to 111mm)
- Works both vertically and horizontally
- Set includes fine tooth ratcheting pliers for accurate compression and 6 interchangeable bands

Interchangeable Bands:

641-1, band sizes 2-7/8" to 3-1/8"

641-2, band sizes 3-1/8" to 3-3/8"

641-3, band sizes 3-3/8" to 3-5/8"

641-4, band sizes 3-5/8" to 3-7/8"

641-5, band sizes 3-7/8" to 4-1/8"

641-6, band sizes 4-1/8" to 4-3/8"



ENGINE - Engine Cooling

244TNZ Heater Hose Disc 4-Piece Set

- Thicker than most hose disconnect tools, so you will not get hung up or break the connector
- 40-degree offset designed for jobs up against the firewall or in tight spaces
- Similar tools may have handles that get in the way, our low-profile design does not
- Set of four will cover all your quick connect hose needs
- Patent Pending



751 GM Thermostat Wrench

Designed to work on GM 3.1L and 3.4L engines. In these applications, the bottom housing bolt is almost inaccessible without removing other parts - until now.

Our GM thermostat wrench, with its unique shape and design, will allow users to remove and install the housings in a fraction of the time, compared to using other methods.

- 13mm, 12-point with special bends specifically for GM's 3.1L and 3.4L engines
- Can be used for other applications



Category continued on the next page >>>



752 Variable Pin Spanner Wrench

The universal design of this wrench ensures that it will fit on a wide variety of pulleys that feature holes or slots, including both crankshaft and camshaft pulleys.

- Adjustable from 1-1/4" up to 5". Use with a 1/2" drive ratchet or breaker bar

Accommodates the most common metric dual-pin configurations:

3.5mm, 4mm, 4.5mm, 5mm, 6mm, 7mm, and 10mm



171 Ford 6.0L Diesel Head Bolt Adapter

- Designed to loosen and tighten diesel head bolts on 6.0L Powerstroke® diesel engines
- Offset of the adapter increases torque for loosening stubborn fasteners and creates better access
- The low-profile allows for easy access to head bolts without the need to remove the cab, A/C components, or multiple engine-related parts, saving time and money



195 Power Steering Pump Remover & Installer Kit

This kit has nearly everything you need to remove and install power steering pump pulleys in Chrysler®, Ford®, and GM® vehicles with Saginaw®, Thompson®, and Ford C111 and C2 power steering pumps. Fits 1-1/8", 1-1/4", 1-5/16" and 1-3/8" pulley hub diameters.

Applications:

1988–newer GM cars equipped with Quad 4 engines, 1991–94 GM 3.1L V6; 1991–newer 3800 V6 engines; 1994–newer GM 3100 V6; 1999–newer GM 3400 V6, 1992–newer Ford Crown Victoria and Mercury Grand Marquis with 4.6 V8 engine, 1997–newer Ford truck with 4.2 & 4.6 V6, 5.4 V8, and 6.8 V10 engines



386 Harmonic Balancer Puller

Designed for removing damper pulleys in tight engine compartments, without removing the radiator.

- Contains the 3-jaw puller, four lengths of forcing rods, and a forcing screw with a 3/8" square drive for ratchet use, and a 3/4" hex for wrench or socket use

Applications:

GM® 2000 Gen III (1997-2007) 4.8L, 5.3L, 5.7L 6.0L, and 8.1L V8s, Cadillac® 4.5, 4.6, and 4.9L V8s beginning in 1988, Chevrolet®/Isuzu® trucks and SUVs 2003–later 4.2L I6, 2004–current 3.5L I5 and 2005–current 2.8L I4, Chrysler® engines from 1990–later, including 2.0L, 2.4L-4s; plus 2.5L, 2.7L, 3.3L, 3.5L, and 3.8L V6s, Ford® 1995–later V8 engines with 3 spoke pressed on damper, and Mitsubishi® Eclipse with 1995–1999 2.0L DOHC non-turbo engines



499 Ford® 7.3L Diesel Rear Main Seal and Sleeve Removal and Installation Kit

Safely and easily remove and install rear main seals and crankshaft wear rings for Ford® 7.3L Powerstroke™ engines.

- For 1994-2003 Ford 7.3L diesel engines of 3/4-ton and 1-Ton Trucks (not for Navistar engines)
- Contains all necessary to remove and install wear sleeve as well
- Eliminates the need for make-shift method that often lead to unwanted damage

980 Crank-Bolt Socket Set

- Deep counter-weighted sockets to add more torque to break loose stubborn crank bolts for Honda, Toyota, and other makes
- Includes 17mm, 19mm, and 21mm
- Comes in a blow-molded case

Applications:

Honda/Acura® models: Accord®, Civic®, Pilot®, CRV®, Odyssey®, CL, TL, Integra®, MDX® vehicles
 Toyota/Lexus® models: Camry®, Corolla®, 4Runner®, Sequoia®, ES300, LS400 vehicles
 Any vehicle with a 17, 19, or 21 mm crank bolt

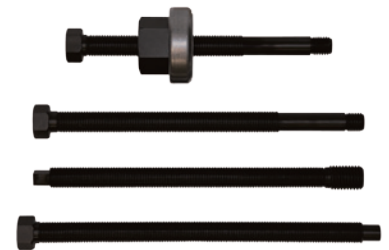
**38500 Master Harmonic Balancer & Pulley Installer**

Two of our best-selling harmonic balancer installation sets combined to create a true “Master Set”. A wide-ranging set applicable to nearly any domestic or foreign applications.

- Install harmonic balancers on many popular late model Ford®, GM®, Dodge®, and Chrysler® engines with recessed threads for the crankshaft bolt and/or traditional setups
- Can be used for the installing underdrive or oversized pulleys
- Features four high-quality, long-reach threaded adapters, twelve standard, threaded adapters, force nut, and pressure bearing(s) to install balancers and pulleys with ease
- Long reach installer utilizes a heavy-duty, friction-free nut and pressure bearing assembly
- Offers more applications than other sets on the market
- Comes in a blow-molded case

**38700 Long Reach Harmonic Balancer and Pulley Installer**

- Install harmonic balancers on many popular late model Ford®, GM®, Dodge®, and Chrysler® engines with recessed threads for the crankshaft bolt
- Can be used for the installing underdrive or oversized pulleys
- Traditional type balancer pulley installers will not provide the reach to work in many applications
- Features four high-quality, long-reach threaded adapters and force nut to enable technicians to install these balancers and pulleys with ease
- Comes in a blow-molded case

**38710 Ford® EcoBoost® Long Reach Harmonic Balancer Installer**

Achieve easy installation of harmonic balancers of Ford® EcoBoost® and various other Ford®/Lincoln® engines from 2011 to 2018. The highlight of this tool, besides the reach and ease of use, is the nut and bearing sleeve. Included spacer to fit into pulleys and limit interference.

- Can be used on 2.7L, 3.0L, 3.3L and even 5.0L engines in Ford®/Lincoln® cars, trucks, and SUV's
- Nut and bearing sleeve assembly reduces friction while ensuring a proper fit
- Accesses hard to reach areas

Ford/Lincoln applications:

Ford® car, Ford® F-150® and Lincoln® with EcoBoost® and various other engines: 2.7L, 3.0L, 3.3L, and 5.0L (32 valve) in the model years: 2011-2018 (applications vary by model year)

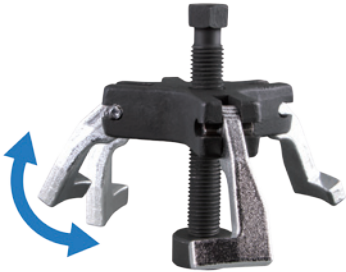


Category continued on the next page >>>



38800 Harmonic Balancer Installer

- Ideal for installing harmonic balancers with pressed on single or multi-groove drive pulleys
- Contain twelve thread adapters to fit more applications than other brands
- Utilizes a heavy-duty, friction-free pressure bearing to create evenly applied force while tightened



38000 Ratcheting Harmonic Balancer Puller

Remove harmonic balancers without the hassle of trying to start bolts or the frustration of positioning multi-jointed puller legs.

- Three ratcheting legs with puller feet eliminate the need for bolts
- Ratcheting legs adjust and hold their position to make one person use easier
- No need to remove radiator or other components with this compact design

Applications:

GM® 5.3L, 5.7L LS1, 6.0L LS2, 6.2L LS3, and 7.0L • Ford® 5.0L Coyote • Most three and six spoke harmonic balancers/pulleys



38100 Ford and Mazda Crankshaft Holder

- Provides a secure fit to hold the harmonic balancer to allow easy removal or installation the crankshaft bolt
- A 1/2" drive tab allows for the use of a ratchet or breaker bar for additional leverage
- Heavy-duty construction and rust-resistant finish
- Fits multiple models of Ford, Mazda, and Volvo with 2.0L, 2.3L, and 2.5L engines
- Applications include popular models such as Escape®, Fusion®, and even Transit®



38110 Ford Harmonic Balancer Holder

- Provides a secure fit to hold the harmonic balancer to allow easy removal or installation the crankshaft bolt
- A 1/2" drive knockout allows for the use of a ratchet or breaker bar.
- Heavy-duty construction and rust-resistant finish
- Fits multiple models Ford models and engines from 1992 to 2016



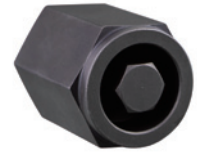
754 3-in-1 Subaru Sprocket Tool

Specially designed to assist in removing multiple cam sprockets on multiple Subaru applications, holding the sprocket while removing the bolt without damaging the sprocket.

- Allows for removal of the intake, exhaust cam, and AVCS intake cam sprockets without damaging the cam or the sprocket
- Can be used during many jobs, including cam seal renewal, cylinder head removal, or motor tear downs
- Prevents damage to critical components
- 1/2" Drive connection for use with breaker bar
- Compact design makes for easy storage

7541 Subaru Hex Bit

- Specifically designed to fit Subaru crankshaft sprocket bolt
- Designed for use with a 1" socket or wrench
- Impact rated



198 Subaru Crank Pulley Tool

- Designed to hold harmonic balancer for removal and installation
- Combines the individual tools available into one tool, while also increasing applications
- Eliminates the need to remove the radiator to make space for an impact wrench. Time is saved by not having to refill and bleed the air out of the cooling system when changing a timing belt

Applications:

1.8L, 2.2L, 2.2L Turbo, and 2.5L Subaru engines



ENGINE - Thread Repair

38900 Two Valve Ford Triton Spark Plug Thread Repair Kit

Designed to aid in repairing Ford engines modular cylinders heads (1996-2003)

- A quality, fool-proof repair system that is cost effective and fast
- Oversized steel alloy insert will repair other inserts that fail and has no ill effects from heat transfer
- Average repair times as short as 25 minutes
- Patented

Replacement inserts: 389-100 (14mm x 1.25)



39100 Ford Triton Spark Plug Extractor

- Extracts frozen and broken off spark plug sleeves in 2004 to present Ford Triton Engines
- Machined guide works with extra-long tap and extractor to make sure the job is done right
- It is recommended to also purchase 39100 or 39500
- Saves time and money



39200 Ford Triton Spark Plug Porcelain Extractor

When extracting spark plugs in Ford Triton engines (2003 and up), fragments of porcelain and debris may need to be removed for the tool to work effectively and to prevent damage. Since Ford recommends not pushing this material down, technicians can utilize this tool to adhere to the broken pieces for easy extraction.

- Provides an effective method to thoroughly extract broken porcelain and other possible debris that occurs when removing spark plugs on these Ford engines, preventing damage or a failed repair
- Applicable to Ford Triton Engines (2003 and up)
- Uses a special perma-bond, allowing user to extract the broken porcelain and perhaps other debris from the sleeve
- Saves time and money



Category continued on the next page >>>



39300 Three Valve Ford Triton Insert Kit

With Ford some gasoline engines, the spark plugs tend to break during routine maintenance. If not properly repaired, this may lead to damaged or even useable spark plug threads, potentially causing a misfire or spark plug blowout.

- Applicable in three-valve 5.4L and 6.8L gasoline engines built before 10/9/07 and three-valve 4.6L engines built before 11/30/07 found in many 2004–2008 Ford, Lincoln, and Mercury vehicles
- Provides an effective method to thoroughly extract broken porcelain and other possible debris that occurs when removing spark plugs on these Ford engines, preventing damage or a failed repair
- This kit will allow the user, with simple step-by-step instructions, to repair those damaged threads in 30 minutes or less per cylinder
- Saves time and money

Replacement inserts: 393-100 (16mm x 1.5)



39500 Ford Triton Broken Spark Plug and Electrode Removal Set

This set is a collection of two our most popular Ford engine specific tool sets. Combining these sets gives users a everything to properly remove broken spark plugs, as well as handle any debris removal.

- Applicable to 4.6L and 5.4L Ford three-valve engines, including Triton series engines (2003 and up)
- Saves time and money

FUEL, IGNITION, AND EMISSION SYSTEMS - Emission Tools



841 11-Piece Oxygen Sensor Socket Set

- A versatile set is used for the installation and removal of oxygen sensors on most domestic and import vehicles, includes the most popular sizes of oxygen sensor sockets
- Provides a method for removal and installation without damage to sensor
- Comprised of SAE and metric sizes

Includes:

1/2" Dr x 29mm x 6pt x 90mm
3/8" Dr x 7/8" x 6pt x 90mm
1/2" Dr x 27mm x 12pt x 78mm
3/8" Dr x 7/8" x 6pt x 80mm
3/8" Dr x 1" & 1-1/16" x 74mm
1/2" Dr x 7/8" x 50mm
3/8" Dr x 7/8" x 50mm
1/2" Dr x 1" x 7/8" 6pt
1/2" Dr x 22 x 6pt x 88mm
3/8" Dr x 22 x 6pt offset, deep
Sensor Thread Chaser M18 x 1.5



841-11 Sensor Thread Chaser (M18 x 1.5)

- Can be utilized with 3/8" drive tools or a 13/16" 6PT socket to restore or clean the threads of O2 sensor ports and other sensors

842 7-Piece Oxygen Sensor Socket Set

- A versatile set is used for the installation and removal of various sensors on most domestic and import vehicles, includes the most popular sizes for sensors
- Provides a method for removal and installation without damage to sensor
- Comprised of SAE and metric sizes

Includes:

- 7/8" - Vacuum Switch Socket
- 7/8" - Oxygen Sensor Socket (Short)
- 7/8" - Oxygen Sensor Socket (Long)
- 1" - Oil Pressure Sending Unit Socket
- 1-1/16" - Oil Pressure Sending Unit Socket
- 27 mm - Oil Pressure Sending Unit Socket
- 29 mm - Vacuum/Pressure Switch Socket



843 Oxygen Sensor Wrench

- Flex head offers essential clearance for removal or installation of oxygen sensors awkwardly positioned or when leverage is needed around an exhaust pipe
- Designed for all oxygen sensors with 7/8" hex
- For numerous applications including Ford 4.6L and 5.4L engines and knock sensors used on mid-sized trucks, SUV's, and vans
- Incorporates a harness pass-thru in socket



844 6 and 12-Point Flex O2 Wrench

- Designed for use with most oxygen sensors
- Double sided head provide two tools in one, for 6-point and 12-point sensors
- Offset, low-profile design gives technicians more access and leverage to remove sensors in hard to reach areas
- Incorporates a harness pass-thru in socket



FUEL, IGNITION, AND EMISSION SYSTEMS - Fuel and Ignition System Tools

64 High-Energy Ignition Tester

- Safely checks for spark on any ignition system or engine with 1 to 12 cylinders
- Sealed chamber reduces risk of fire around high-pressure fuel injection systems or marine use
- Attach spark plug wire to tester and clip tester to engine and turn over the engine and check for the presence of spark



65 Noid Light Set

- Provides a quick and easy method for detecting electrical signal at the fuel injector
- A comprehensive kit of eight Noid Lights applicable to many popular makes, including GM PFI, Bosch PFI, Ford TBI, Geo TBI, GM SCPI and GM TBI
- Includes a convenient harness extension design for remotely viewing from the driver's seat
- Comes in a durable blow-molded case



Category continued on the next page >>>



612 Universal Ignition Spark Tester

- Works on ignition systems from high energy electronic automotive systems to small engines
- Tests no start conditions and spark strength
- Tests high energy and distributor-less ignitions



693 Ignition Point Files

- Quality double cut ignition files guaranteed to file tungsten and platinum contact points
- Made of super hard, high quality steel



253 Fuel Tank Locking Ring Tool

- Unique design fits on multiple makes and models of fuel tank lock rings
- Easily removes and installs fuel tank lock rings when servicing fuel pump or fuel sending unit
- Allow for greater clearance on the top of fuel sending units than other versions

Applications: (not limited)

2004 and newer Ford® F-150® trucks, 2004 and newer Chevrolet® 1/2-ton and 3/4-ton trucks, FCA® mini vans, PT Cruisers®, Dakotas®, and Durangos®



684 Line Quick Disconnect Tools

- For spring lock coupling/ snap lock air conditioning lines, late model fuel lines and automatic transmission cooler lines found on GM, Ford, and Chrysler vehicles
- Six popular sizes fit the following tubing O.D. sizes: 5/16" (8mm), 3/8" (9mm), 1/2" (13mm), 5/8" (16mm), 3/4" (19mm), and 7/8" (22mm)
- Also works on some transmission and radiator cooler lines
- Color coded and stamped with tool size for quick identification



683 Master Disconnect Set

- The most complete disconnect set on the market
- No more random disconnect tools laying around to be lost
- Wide array of disconnect tools in one convenient set



689 Fuel Line Plier

- Designed for quick connect, slide, and lock couplers found on fuel lines found on European and domestic vehicles including Audi, GM, Mercedes, Toyota, and VW models
- Can be used to pull fuel lines, as well as vacuum hoses on some Mercedes models
- These pliers are designed for quick connect, slide and lock couplers found on European and domestic vehicle fuel lines

55000 11-Piece Deutsch Terminal Service Kit

- Designed to crimp and release the Deutsch terminals found throughout various industries
- For use on Deutsch open and closed barrel terminals, Weather Pack, Metri-Pack, and other terminals

Contains:

- 3 – Terminal crimping tools ranging from 12-22 gage wire
- 1 – Open barrel crimping tool for 14-24 gage wire and seals
- 1 – Weather Pack crimping tool
- 5 – Terminal release tools
- 1 – Weather Pack release tool



55100 6-Piece Deutsch Terminal Service Kit

- Designed to crimp and release the Deutsch terminals found throughout various industries
- For use on Deutsch open or closed barrel terminals and other open barrel terminals

Contains:

- 2 – Terminal crimping tools ranging from 14-22 gage wire
- 1 – Open barrel crimping tool for 14-24 gage wire and seals
- 3 – Terminal release tools



55004 Open Barrel Crimping Pliers

- Used to crimp Deutsch terminals, as well as Weather Pack and other types
- For use with wire gage 14-24
- Compact design for improved access
- Steel construction for strength and durability
- Dual element handles for superior grip and cushioning



55005 Terminal Crimping Pliers

- Used to crimp Weather Pack, Metri-Pack, and other terminals and seals with ease and accuracy
- Applicable for wire from 12 gage to 22 gage and two seal or Metri-Pack size from Ø3.45 to Ø4.25
- Crimps open barrel terminals with two-crimp process
- Compact design for improved access
- Steel construction for strength and durability
- Dual element handles for superior grip and cushioning



611 17-Piece Electrical Back Probe Kit

- Access electrical circuits from the back side of connectors
- Extended wires make testing connectors more convenient
- Access to check for voltage or amperage while connector is plugged in



613 20-Piece Electrical Back Probe Kit

- Access electrical circuits from the back side of connectors
- Extended wires make testing connectors more convenient
- Access to check for voltage or amperage while connector is plugged in



Category continued on the next page >>>



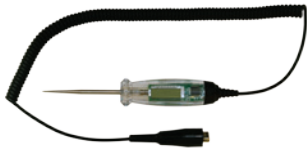
69 Amp Alert

- Use to instantly detect parasitic drain without the need to remove fuses
- Simply touch probes to the top of the fuse and tool gives off a distinct audible tone when parasitic drain (current) is detected
- A huge time saver for the technician. Cuts troubleshooting time by up to 90%
- Avoid blown multi-meter fuses
- Resolution down to 5 milliamps



70 Heavy-Duty Circuit Tester

- Tests 6V-12V-24V AC or DC systems for open, grounded, or short circuits
- 60", 16-gauge wire with heavy-duty ground clip
- Replacement indicator bulbs: 67-01



78 LCD Test Light for 6V, 12V, 24V Systems

- Test for voltage on both power and ground in DC circuits on 6v, 12v, 24v DC systems
- LCD test light can be used for testing both power and ground voltage on DC circuits
- Backlit LCD display
- Stainless steel probe
- Coiled cord with reach up to 12 feet
- For use with DC circuits only



81 Logic Light Circuit Tester

- Patented LED edge-lighting illuminates the handle red when power is detected and green when the probe is grounded
- Internal power source allows user to easily and safely test live and non-live 6V, 12V, and 24V DC systems without the need for an additional power source
- Save time by quickly and easily determining if a circuit is grounded
- Safe for use with sensitive modern onboard electrical systems



63 Window Tint Meter

- Measures the total amount of Visual Light Transmission (VLT) through a window treated with aftermarket window tint film



74 "The Original" Amp Hound

- Drastically reduces the time needed to find the current in fused circuits: ATM, ATO, and MAXI
- Audible beep instantly tells you if there is any current in any circuit
- Fuses do not need to be removed to read current, check entire fuse block quickly
- Easily find parasitic drain
- Battery operated with an automatic shut-off
- Includes standard test leads
- Patented

72 Amp Hound 2

- Safe and convenient method to determine real time readings of current and amps in fused circuit without removing fuse
- Ideal for locating a parasitic drain
- Special Fuse Adapters lock on to fuse to give user hands free control
- Includes all features from original Amp Hound that allows easy component testing and Parasitic Drain location
- Takes amperage readings without having to access hard to reach components
- Audible tone when in contact with fuse, ensuring use has complete contact



73 Ripple Quick Tester

- Allows the user to test an alternator for bad diodes, bad stators, and intermittent diodes or stators without ever lifting the hood
- Simply plug the tester into the vehicles DC port and the tester will give results in a series of LED flashes to pinpoint exact problem
- Many late model vehicles have access issues when it comes to the engine compartment, this tool will greatly decrease the time spent troubleshooting



76 Deluxe 12-Volt and 24-Volt Relay Tester

- Tests an entire circuit from the battery to the component in question, as well as determining if the relay itself is functioning properly
- This tool gives the technician the ability to instantly determine the problem within a tested circuit
- Identifies at the push of a button if a wire, a part, or a relay is defective, without the use of a multi-meter. If the technician wishes to gain more information about the problem, the tool also features easily accessible ports for use with other diagnostic tools
- Other uses include jumping relays, remote-control starter when doing a compression test or adjusting timing, and running a freon compressor during A/C service
- Includes the tester, 6 popular relay leads, 1 universal relay lead
- Comes in a blow molded case with a high-density foam insert
- Works with both 12 and 24-volt systems
- Patented



84 WIFI Borescope

A waterproof, hi-res camera and LED lighting give a real “inside look” when inspecting and diagnosing issues. With an independent WIFI signal, all that is needed to operate this borescope is a cell phone. The rigid, yet still flexible cable makes it easy to maneuver around obstacles.

- Hi-Res, multi-aspect camera (up to 1080) with adjustable LED lighting
- An independent WiFi signal (30 Ft. approx.) means no need to connect to a computer
- Mobile app for both Android (2.3 and up) and IOS (6.0 and up) devices gives users options: image capture, video recording and album storage
- Lens and 58-inch cable are IP67 certified dust-proof and waterproof, up 3 feet of water for up to 30 minutes. (Transmitter is not rated.)
- Long, bendable cable is flexible yet rigid enough to give users access into hard to view areas.
- Compact camera is only 6mm in diameter by 35mm in length, allowing user greater access, especially in glow plug holes
- Rechargeable lithium battery in the transmitter
- Attachments (hook, magnet, and mirror) included, unlike other brands

Replacement accessories kit: 84-1



ELECTRICAL AND DIAGNOSTIC - Alternator Service



750 22-Piece ADP Kit

Used to service both OWC (One-Way Clutch) and OAD (Overrunning Alternator Decoupler) style pulleys. To remove these pulleys, the shaft coming from alternator needs to be locked in place while the pulley turned.

Since the OWC pulley in 1997, followed by the OAD in 1999, more manufacturers are utilizing these designs in their belt drive systems.

Service vehicles included but not limited to, the following list:

Audi, BMW, Buick, Cadillac, Chevrolet, Chrysler, Citroen, Dodge, Fiat, Ford, Honda, Lexus, Mercury, Mercedes-Benz, Opel, Pontiac, Peugeot, Porsche, Renault, Saturn, Seat, Scion, Toyota, and VW



756 5-Piece Alternator Service Bit Set

Removes and installs many alternator decoupler pulleys on many popular vehicles. When removing these pulleys, the shaft coming from the alternator needs to be locked in place while the pulley is either direction, depending on the manufacturer.

- For removing and installing de-coupler pullers found on numerous vehicles, domestic and foreign

Set Includes: H22 x 33T, H17 x H19, H10 x 70mm L, 12mm x 75mm L x T50, and Spline M10

ELECTRICAL AND DIAGNOSTIC - Radio and Antenna Tools



135 Ford Radio Remover Tool

- Tool inserts into holes on radio face to release retaining clips.
- Fits Ford vehicles 1987 to current
- Makes removal fast and easy



142 Antenna & Radio Socket Set

- Eleven-piece kit in molded case
- Universal antenna wrench
- Ford radio removal tool
- Deep sockets to remove and install the tamper-proof radio nuts from many GM, Chrysler, and other aftermarket radios
- Antenna nut sockets that cover most import and domestic antenna nuts

ELECTRICAL AND DIAGNOSTIC - Battery Maintenance



549 Battery Terminal Clamp Spreader

- Designed to both spread battery cable clamp and clean terminal in one swift operation
- Forged and heat-treated jaws
- 7-1/2" overall length



553 Heavy-Duty Battery Post & Terminal End Brush

- Heavy-duty, designed with tapered bristles to clean posts and terminal ends quickly and safely

Bearing Splitter

503 Bearing Splitter - Capacity is 0" to 4-1/4"

508 Small Bearing Splitter - Capacity 1-1/4" to 2-1/4"

509 Medium Bearing Splitter - Capacity 3" to 4-1/2"

511 Large Bearing Splitter - Capacity 4" to 6"

Designed to remove and pull bearings in tight areas such as removing generator gears, bearing cones, bearings, and similar instances where ordinary puller jaws cannot reach

- Removes thin faced & cone shape gears, with a beveled edge that can be easily placed behind the part to provide a secure grip of the component
- Split and separate bearings where puller jaws cannot be used
- Made from industrial strength components, including heat-treated threaded rod
- Threaded surface ports allow splitter to be used in conjunction with other flange-style pullers



501 7-Ton Bar Type Puller Bearing Separator Set

Includes a Bearing Splitter with 4" capacity, two sets of hex push puller legs, and 8" bar type puller head mated with a custom thread forcing screw.

- Capable of up to 7-tons capacity and a working range of 8" to 16"



502 5-Ton Bar Type Bearing Separator Pusher and Puller Set

- Set includes two popular bearing splitters (2" and 3"), four sets of hex push-puller legs and a bar-type puller head with a 9/16" forcing screw
- Separator tools are used with bar puller and legs for a wide variety of pulling jobs
- The 5" puller cross-bar with a 6-1/4" forcing screw or each of the bearing separators may also be used separately or in combination with other pullers or tools



PULLERS AND INSTALLERS - Multi-Use Pullers

956 9-Way Slide Hammer Puller Set

- Pulls flange-type rear axles and most front-wheel drive hubs
- Internal and external jaws provide a variety of combinations to pull bearings, gears, and seals
- Two and three-way cross blocks and cone provide the perfect jaw configuration for most jobs
- Includes a grip wrench adapter and a dent puller attachment for sheet metal or other unique pulling requirements



237, 240, 941, 942, and 944 Two-Jaw Pullers

- Designed with forged yokes, heat treated jaws, and plated for years of dependable use
- Center screws heat treated and finished in black oxide for long-lasting durability

Available sizes:

237, 2-Ton, Two-Jaw Adjustable Puller

2-1/8", 3-1/4" spread, 3/8" center screw - 24" x 4-3/4"

240, 2-Ton, Two-Jaw Adjustable Puller

3-1/2", 4" spread, 5/16" center screw - 24" x 3 7/8 in"

941, 5-Ton, Two-Jaw Reversible Puller

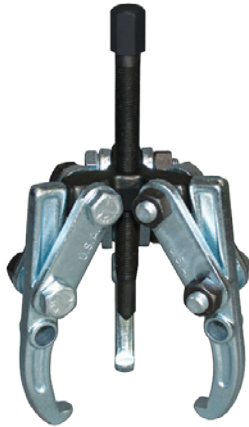
3-1/2", 6" spread, 9/16" center screw - 20" x 6 3/8"

942, 5-Ton, Two-Jaw Adjustable Puller

5-1/2", 7" spread, 9/16" center screw - 20" x 6 3/8"



Category continued on the next page >>>



134, 951, 952, 953, and 954 Two & Three Jaw Combination Pullers

- Pullers can be used as either a 2 or 3 jaw puller simply by changing the jaws on the yoke
- Pullers have standard threads, zinc, and black oxide finish
- Yoke and jaws are forged, and all components heat-treated

Available sizes:

134, 2-Ton, Two & Three Jaw Combination Puller

3 1/2", 4" spread, 3/8" center screw - 24" x 4-1/4"

951 Two & Three Jaw Combination Reversible Puller

3-1/2", 7" spread, 9/16" center screw - 20 x 6-3/8"

952, 5-Ton, Two & Three Jaw Adjustable Combination Puller

5-1/2", 8" spread, 9/16" center screw - 20 x 6-3/8"

953 7-Ton, Two & Three Jaw Combination Reversible Puller

5-1/2", 10" spread, 11/16" center screw - 18 x 8-3/8"

954 7-Ton, Two & Three Jaw Combination Adjustable Puller

9", 11" spread, 11/16" center screw - 18 x 8-3/8"



187 Steering Wheel Puller

- Designed to pull steering wheels on all major makes of automobile
- 5/8" x 4" center screw equipped with a floating swivel to prevent damage to horn wire connections
- Five sets of side screws provided



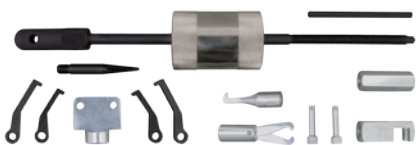
192 Pulley Puller

- Provides positive pulling power to remove pressed-on one or two groove pulleys on alternator, power steering pumps, and alternator bearings
- No loose parts to be lost or misplaced



957 Adjustable Puller

- A versatile puller designed to work in numerous scenarios, especially in tight areas
- Jaws stay put before applying tension for ease of use 3-jaw adjustable puller
- Adjustable from 2" to 5" diameter
- 2" depth



49700 14-Piece Light-Duty Slide Hammer and Puller Set

The slide hammer with its array of attachments can be utilized to pull seals, bearings, freeze plugs, and studs.

- 2 lbs. slide hammer and attachments can be used in various applications, automotive and beyond
- Multiple puller configurations can be used with inner spreads from 3/8" to 1-1/4", outer spreads up to 2-1/2", and depths of up to 2-1/2"
- All components are in a blow-molded case for storage and easy organization

905 Light-Duty U-Joint Puller

- The ideal solution for disassembling seized, stubborn U-joints quickly and easily of virtually all cars, light-duty trucks, and farm machinery
- Manufactured from high-grade materials for strength and durability
- Eliminates the need to employ dangerous and less-effective methods, like hammer-and-vice which have an inherent high potential of damaging components



907 Intermediate U-Joint Puller

- The ideal solution for disassembling seized, stubborn U-joints quickly and easily on most medium-duty trucks, school buses, as well as farm and light industrial vehicles
- Manufactured from high-grade materials for strength and durability
- Eliminates the need to employ dangerous and less-effective methods, like hammer-and-vice which have an inherent high potential of damaging components



199 Heavy-Duty U-Joint Puller

A heavy-duty solution for disassembling even the most seized stubborn U-joints in minutes on virtually all Class 7 and 8 trucks and machinery.

- Engineered for use with up to a 1" impact tool
- Eliminates dangerous vice-and-socket or hammering removal methods
- Does not damage the driveshaft, yokes, joints or bearing cups

Applications

U-Joints with bearing cups 1.5" to 2.2" O.D.
 Spicer 1610, 1710, 1760, 1810, 1880 Series
 Spicer SPL 140, 170, & 250 Life Series
 Meritor (Rockwell) 16N, 17N, 18N, 1710 Series
 Meritor RPL 20, 25 Permalube™ Series



497 Heavy Duty Yoke Puller

Simplifies and expedites the removal of heavy-duty yokes on drive shafts, transmissions, and drive axles without damage to yokes or other components. Also, the caps are designed with flexibility in mind to service an extensive range of class 6-8 trucks.

- Fits on multiple Spicer full and half round yokes
- Fits on Meritor (Rockwell) RPL 20 & 25 series
- Manufactured from high grade steel



18510 Bolt Retained Bearing Cup Installer

- For use with Spicer 1610-1880 series full-round, bolt retained bearing cups
- Presses in U-joint bearing cups with ease and proper alignment every time, without disturbing or possibly damaging the needle bearings
- A heavy-duty construction to be used with hand tools or impact tools
- Replaces inferior methods such as using a hammer to set the cups



20200 Magnetic Bearing Cup Installer

- Used to install bearing cups on light and medium-duty yokes and driveshafts up to 5-5/8" spread
- Internal magnet hold bearing
- Presses in U-joint bearing cups with ease and proper alignment every time, without disturbing or possibly damaging the needle bearings
- A heavy-duty construction to be used with hand tools or impact tools
- Replaces inferior methods such as using a hammer to set the cups



Category continued on the next page >>>



20 Clutch Alignment Tool

- Designed to align clutch plates and pilot bearings accurately
- Used to align single disc clutches on most domestic and imported vehicles
- Contains: 6 two-step SAE pilot bushings, 2 metric 2 step pilot bushings, center shaft and tapered alignment cone with an 1-1/8" maximum diameter taper



28 Pilot Bearing Puller with Slide Hammer

- Removes bearings or bushings on flywheels, pump, generators, etc. with 1/2" to 1-3/8" (13mm to 32mm) inner diameter capacity
- 3 lb. slide hammer

Replacement Jaws: 917-400 (requires two)



29 Blind Hole Puller Set

- Designed for removing bearings from a recessed location.
- Set includes a 2-1/2 lbs. slide hammer with T-handle and four collets, for a range of applications with 3/8" – 1-1/4" (10mm to 32mm) inner diameter holes
- Ideal for removing pilot bearings



31 Pilot Bearing Puller

- When working space is limited, this puller is a great tool to remove flywheel pilot bearings from automobile, trucks, and tractors
- Can also be used to pull bushings or bearings from generators or starters
- Only 7-1/2" long
- 1/2" to 1-1/4" I.D. capacity jaws



189 Harmonic Balancer Puller

- Designed to pull balancers, vibration dampers, pulleys, and gears with tapped holes
- Four slots in yoke allows tool to be used in both two and three-hole applications
- Removable, floating swivel prevents damage to shaft
- Yoke is forged from high grade alloy steel and heat-treated



506 Adjustable Bearing Pusher & Installer

- 3-Stepped jaws quickly adjust to accommodate bearing races and seals from .708" – 3.543" (18mm – 90mm)
- All-in-one design eliminates the need for a driver and different size adapters
- Durable and sturdy aluminum construction, equipped with a steel capped striker shaft handle
- Locking screw holds the adjustable jaws in place for one hand use



49500 Body Dent and Seal Puller

- Used to remove seals, or it can be used to pull sheet metal
- Equipped with a 2.5 lbs. slide hammer and 13" long shaft for increased pulling force

49600 Seal Puller

- Heavy-duty seal puller for removing metal, rubber, or other full lip seals
- Adapter is recessed to keep hook and locks screw securely in place, while user rotates the handle to force the screw through the seal for removal
- 17" length shaft enables high pulling force



91800 Rear Axle Bearing Puller Set

Designed to remove flange type, semi-floating rear axle bearings in most late model, rear-wheel drive cars and light-trucks.

- Includes 3 bearing pullers with a range from 1" up to 2-7/8"
- For flange-type, semi-floating bearings
- Designed to capture rear axle bearings firmly
- Comes in a blow-molded case



PULLERS AND INSTALLERS - Stud and Dowel Removal

95200, 95300, and 95400 In-Line Dowel Pin Puller Set

Eliminate the need of a slide hammer when removing dowels. Fit the appropriately sized collet over the dowel, tighten the sleeve, and use outer sleeve and nut to extract the dowel.

- Simple and effective method for removing dowel pins
- Can be used with air ratchet, or traditional ratchets
- Elimination of the slide hammer saves time and money while eliminating the potential of injury
- Comes in a blow molded case
- Patent pending

Contains:

SAE Set includes: 3/16", 1/4", 5/16", 3/8", and 1/2"
 Metric Set Includes: 4mm, 5mm, 6mm, 8mm, 10mm, and 12mm
 Master Set includes both SAE and Metric Collets

95200, In-Line Dowel Pin Puller Set, SAE

95300, In-Line Dowel Pin Puller Metric, Metric

95400, In-Line Dowel Pin Puller Master Set



95500 and 95550 Stud Extractor Sets

- Removes studs even if only a few threads are exposed
- Easily installs new studs without damage to threads
- Comes in a blow-molded case

95500, Stud Extractor Set, SAE

Sizes: 1/4" x 20, 1/4" x 28, 5/16" x 18, 5/16" x 24, 3/8" x 16, 7/16" x 14, 7/16" x 20, 1/2" x 13, 1/2" x 20, 9/16" x 12, 9/16" x 18, 5/8" x 11 and 5/8" x 18

95550, Stud Extractor Set, Metric

Sizes: M6 x 1.00, M8 x 1.00, M8 x 1.25, M9 x 1.00, M9 x 1.25, M10 x 1.25, M10 x 1.50, M14 x 2.00, M16 x 1.5, M16 x 2.00



Category continued on the next page >>>



19 Stud Remover

- This powerful tool is designed to fit into hard-to-reach spots and remove hard-to-turn studs
- Will remove broken studs with threads with material above the surface
- Capacity from 1/4" to 3/4" (6 to 19mm) diameter
- Roller assembly grips like a pipe wrench
- Works with a 1/2" drive



95600 SAE Stud Removal and Installation Set

Quickly and easily remove or install standard studs without damage.

- Specifically designed to make stud removal and installation easy
- Contains multiple sizes, common in the automotive industry
- Eliminates the potential of damage to the stud other methods often cause

Standard thread sizes: 5/16" x 18, 5/16" x 24, 3/8" x 16, 3/8" x 24, 7/16" x 14



95700 Metric Stud Removal and Installation Set

Quickly and easily remove or install metric studs without damage.

- Specifically designed to make stud removal and installation easy
- Contains multiple sizes, common in the automotive industry
- Eliminates the potential of damage to the stud other methods often cause

Metric thread sizes: M6 x 1, M8 x 1.25, M10 x 1.25, M10 x 1.50, M12 x 1.50

FILTERS, LUBRICATION, AND MAINTENANCE - Band Style Filter Wrenches



967 4-In-1 Swivel Oil Filter Wrench

- Wrench set features one swivel handle assembly with four interchangeable bands
- Designed with two detent pins for quickly and easily swap bands
- Fits oil filters 2-3/8" to 4-3/8" (61mm-111mm)



993, 994, 995, and 999 Swivel Oil Filter Wrenches

- Features a swivel handle which allows user to get to filters in hard-to-reach areas
- Wide dimpled band securely grips filters without crushing
- Easy-grip vinyl handle

993, Swivel Oil Filter Wrench

Fits filter diameters 2-3/8" to 2-7/8" (60mm-73mm)

994, Swivel Oil Filter Wrench

Fits filter diameters 2-7/8" to 3-1/4" (73mm-83mm)

995, Swivel Oil Filter Wrench

Fits filter diameters 3-7/16" to 3-3/4" (87mm-95mm)

999, Swivel Oil Filter Wrench

Fits filter diameters 4" to 4-3/8" (102mm-111mm)

989, 991 Swivel Truck Filter Wrenches

- Features a swivel handle which allows user to get to filters in hard-to-reach areas
- Wide, dimpled band securely grips filters without crushing
- Easy-grip vinyl handle

989, Swivel Truck Oil Filter Wrench

Fits filter diameters 4-5/16" to 4-3/4" (110mm-120mm)

991, XL Swivel Truck Oil Filter Wrench

Fits filter diameters 5-1/4" to 5-3/4" (134-146mm)



891, 892, 893 Heavy-Duty Truck Oil Filter Wrenches

Wide 1-1/2" steel band designed to withstand the high torque requirements of truck, bus, RV, and heavy-duty equipment filters.

- For use with 1/2" square drive

891, Heavy-Duty Truck Oil Filter Wrench fits filters 4-1/8" to 4-21/32" (105mm-118mm)

892, Heavy-Duty Truck Oil Filter Wrench fits filters 4-21/32" to 5-5/32" (118mm-130mm)

893, Heavy-Duty Truck Oil Filter Wrench fits filters 5-5/32" to 5-21/32" (130mm-143mm)



FILTERS, LUBRICATION, AND MAINTENANCE - Oil Filter Pliers

291 Truck & Tractor Filter Pliers

- Spring-loaded, adjustable pliers can easily adjust from 3-3/4" to 7"
- Heavy forged construction creates leverage for high torque applications
- Can be used in one hand applications



297 and 298 Filter Pliers

Pliers design features no-slip jaws with gripping teeth to easily remove stubborn spin-on oil filters

297, fits filters with diameter of 2-3/4" to 3-1/4" (70mm-83mm)

298, fits filters with diameter of 3-1/8" to 3-5/8" (79mm-92mm)



302 Adjustable Filter Pliers

- Self-adjusting, spring action (NOT a slip joint) oil filter plier allows for a full range of filter applications
- Heavy-duty forged construction with textured grip
- Fits filters from 2-1/4" to 6" (60mm-152mm)



29900 Jumbo Filter Pliers

- Spring loaded adjustable pliers can easily adjust from 3-3/4" to 7-1/2"
- Heavy-duty, forged construction creates leverage for high torque applications
- Can be used in one hand applications



Category continued on the next page >>>



29200 Large and Small Filter Pliers Set

- Two heavy-duty filter pliers in one set
- For servicing and maintaining medium-duty and heavy-duty trucks (Class 7 and 8), as well as large generators, equipment, and machinery

Contains:

(1) 302, Filter Pliers

Fits filters from 2-1/4" to 6" (60mm - 152mm)

(1) 29900, Jumbo Filter Pliers

For filter from 3-3/4" to 7-1/2" (95mm - 190mm)

FILTERS, LUBRICATION, AND MAINTENANCE - Cup-Style Filter Wrenches



785, 788, 789, 791 Cup-Type Oil Filter Wrenches

These cup-type filters are made of 7 and 16-gauge construction and can withstand up to 85 ft. lbs. of torque. Cup-type design grips like a socket, minimizing the possibility of crushing filters.

- Used with 3/8" drive

785, Cup-Type Oil Filter Wrench

65mm (2-9/16") - 14 flutes - 1 step

Fits: Champ, Hastings, FM/AC, Wix, NAPA, Purolator, Diahatsu, and Toyota

788, Cup-Type Oil Filter Wrench

74mm to 76mm (2-29/32" to 3") 15 flutes - 2 step

Fits: Fram, AC, and Saturn.

789, Cup-Type Oil Filter Wrench

76mm (3") - 14 flutes - 1 step

Fits: Champion, Champ, Lee, Purolator, Mopar, VW, Porsche, Mercedes, and BMW

791 Cup-Type Oil Filter Wrench

93mm (3-21/32") - 15 flutes - 1 step

Fits Casite, Champ, Champion, GM, Fram, Hastings, Purolator, Wix, Nissan, VW, Porsche, and Renault

FILTERS, LUBRICATION, AND MAINTENANCE - Strap-Style Filter Wrenches



803 Heavy-Duty Filter Strap Wrench

- This deluxe wrench adjusts quickly to any spin-on filter up to 9" (228mm)
- Features 3/8" and 1/2" forged driver and heavy-duty strap for high torque requirements



814 All-Size Filter Strap Wrench

This filter wrench adjusts quickly to any spin-on filter up to 6" in diameter.

- Strong nylon web belt will not slip
- Use with 1/2" square drive
- **814-02** Replacement Strap available

987 Heavy-Duty Three-Legged Filter Wrench

- This three-leg design is ideal for removing spin-on filters in tight access areas
- No handle to interfere with removal
- Long serrated legs driven by a 3/8-in extension and ratchet wrap around the filter
- Fits filters with diameter of 2-1/2-in. to 4-3/4-in. (64mm-121mm)



988 Three-Legged Filter Wrench

- Features gear driven legs to grip and turn even some the most difficult filters
- Designed for use with 3/8" square drive or 3/4" hex wrench
- Compact design allows for use in tight spaces
- Removes filters from 2-3/8" to 3-3/4" (60-95 mm)



996 Oil Filter Socket Set

- Covers a broad range of applications on both domestic vehicles and imports, such as Audi, BMW, GM and VW
- Durable, high-quality forged 3/8" drive sockets

Set includes:

27mm Socket for Mercedes-Benz 1.8L I4, Cadillac STS 3.2L V6

32mm Socket for Saabs, 2.2L GM Ecotec

36mm Socket for BMW M52, M60, M62, M70 and M73 engines; M-B OM604, 605 and 606 engines and Audi/VW VR6 engines



FILTERS, LUBRICATION, AND MAINTENANCE - General Maintenance Tools

610 Diesel Exhaust Fluid Tester

- Designed to work on Semi trucks, as well as some trucks and cars
- Easy to read discs provide indication DEF quality determined by water concentration levels
- Tests for DEF concentration levels within tank
- Works on petcock and capped type tanks



38200 4-Piece Oil Plug Remover

- Contain tools and adapters to remove plastic oil pan drain plugs found on many late model Ford, VW, Audi, and BMW engines
- Revised to include an adapter applicable to Ford/Lincoln plastic oil pan drain plugs of engines: 2.7L / 2.7L (2018) / 3.0L / 3.3L / 3.5L Turbo from 9-12-2018 / 5.0L (2018)
- Designed to slot in and easily release these plugs and not damage the drain plug, as often happens when using other less-effective methods
- When you need a longer reach, take advantage of the 3/8" square drive connection in conjunction with a standard extension
- Comes in a hard case for easy storage



38400 Drain Plug Repair Kit

Designed to repair aluminum oil pans with damaged drain plug threads size M12x1.75 commonly found in GM, Ford, and Mazda.

- Allows user to use original plug instead of an over-sized replacement
- Effective for repairing stripped drain plugs without leakage
- Can be used on many different makes, including GM, Ford, and Mazda aluminum oil pans

Includes:

Drill bit, counter bore tool, tap, tap guide, insert tool, and five inserts





700 Universal Brake Pad Spreader

- Easily compress both pistons at once, facilitates both single and dual piston applications
- Usage for many vehicles including Ford F150 & F50, Ford & GM front wheel drive vehicles



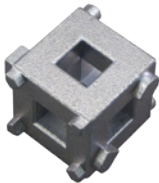
702 Disc Brake Pad Spreader

- Facilitates the quick and easy changing of disc brake pads
- Spreader will compress inner pad and reset piston for easy pad replacement
- Heavy duty construction



727 Universal Caliper Turn and Push-Back Tool

- Compresses any size brake caliper, from motorcycles, standard size cars, trucks, and SUVs, and even some heavy-duty applications
- A 3/8" ratchet can be inserted on the end of the tool for much easier use and increased leverage
- Can also perform front brake jobs by flipping the head around
- Eliminates need for sets with high piece counts



722 Disc Brake Piston Remover

- Rotates the parking brake activated piston back into caliper cylinder when replacing worn pads
- Used on most import, Ford, Chrysler, and some GM vehicles equipped with four-wheel disc brakes
- Use with 3/8" drive ratchets



723 Two and Three-Pin Brake Caliper Turn-Back Tool

- The tool is designed to rotate brake pistons back into the caliper on vehicles with self-adjusting parking brakes
- Replaces kits that contain up to 20 parts by having universally adjustable 2 and 3 pin configurations
- Fits on a standard 1/4" ratchet or breaker bar
- Works on both right and left-hand pistons, as well as most domestic and import vehicles that have self-adjusting parking brakes



724 Brake Caliper Turn Back Tool

Allows you to rewind the pistons in brake calipers

- Works by allowing the rotation of the piston at the same time as pushing the piston back into the caliper
- Rotates brake pistons back into the caliper on vehicles with self-adjusting parking brakes
- Replaces larger kits containing up to 20 pieces
- Fits most domestic and import vehicles

Fits many models including but not limited to:

Alfa Romeo, Audi, Citroen, Ford, Honda, Jaguar, Land Rover, Mazda, Mercedes, Mini, Mitsubishi, Nissan, Lancer, Toyota, VW, Volvo

725, 2-Pin Brake Rewind Tool (Purchase individually)

Min 2 side: .830"

Max 2 side: 1.600"

726, 3-Pin Brake Rewind Tool (Purchase individually)

Min 3 side: .750"

Max 3 side: 1.600"

62 Brake Fluid Tester (DOT 4 only)

- Used to quickly and accurately gauge moisture content of DOT 4 brake fluid
- Fluid quality is indicated on an easy to read LED gauge
- For professional use in automotive repair and maintenance



66 Universal Brake Fluid Tester (DOT 3/DOT 4/DOT 5.1)

- Quick and easy method to accurately gauge moisture content in glycol-based brake fluids
- Easy to read LED gauge to indicate moisture level
- Ideal two-button use, one power button and another to change fluid types
- Self-test feature to ensure proper usage
- Battery auto-shut off feature
- Operates on 1-AAA Battery (included)



BRAKE TOOLS - Hones

762 Sub-Compact Brake Cylinder Hone

Recommended for cylinder bores 1/2" to 2-1/4" (13mm-57mm) diameters.

- Offers fast easy cutting with high or low speed drills
- Self-aligning and self-centering
- Flex joint drive with adjustable tension

Includes:

(2) 1-1/8" (29mm) medium, 220-240 grit stones

Replacement Stones:

763, Replacement Stones

1-1/8" (29mm), medium, 220-240 grit



357 Disc Brake & Small Engine Hone

- Adjustable tension flex shaft hone for 1-1/4" to 3-1/2" (32mm-89mm) diameter cylinders
- Use on most compact cars, as well as, cycles, lawnmowers, and outboard motors
- Includes three, 2" (51mm) Medium grit stones
- To hone disc brake cylinders larger than 1-1/4" (32mm), Order No, 358-1 Fine Grit Stones (Not included)

Replacement Stones:

357-1, medium, 220-240 grit (set of three)

357-3, 2-in. (51mm) fine, 400 grit (set of three)



358 Disc Brake & Caliper Hone

- Equipped with special size Fine Grit Stones to hone disc brake calipers providing that the diameter of the bore is not increased over .002"(.5mm)
- Adjustable tension, capacity 3/4" to 2 1/2"(19mm-64mm)
- Includes three 3/4"(19mm) Fine Grit Stones

Replacement Stones:

358-1, 3/4" (19mm) fine, 400 grit (set of three)



Category continued on the next page >>>



362 Adjustable Brake Cylinder Hone

A full-range hone set covering sizes from 3/4" to 2-1/2" (19mm-64mm).

- Knurled nut controls tension for honing, deglazing throughout full range
- Hones clear to end in step-cut and blind end cylinders
- Flexible shaft for easy use right on car
- Includes three 1-1/8" (29mm) Medium Grit Stones

Replacement hones:

363, medium, 220-240 grit (set of three)

363-01, fine, 400 grit (set of three)

363-02, coarse, 100 grit (set of three)



33000 Multi-Hone Set

A complete set of hones providing honing tools ranging from brake cylinders, to small engines, even automotive engine applications

Set includes:

Three complete hones with 1-1/8" stone length and a set of 2" long hones

- Hone for 3/4" - 2-1/2", for brake master cylinders wheel brake cylinders
- Hone for 1/2" - 1-3/4", for small auto brake wheel cylinders
- Hone for 1 1/4" - 3-1/2", for disc brake caliper and lawn and garden applications
- 2"-long medium grit stones for small engine cylinders



855 Brake Bleeder Tank

- Safe, light weight and easy to use
- Portable tank fills and bleeds both standard and power brakes in a single operation
- Tank is easily pressurized with just a few strokes of the built-in hand pump, eliminating the need for a compressor

Includes:

One (1) gallon capacity tank, extra-long hose, quick-connect coupler, shut off valve, and pressure gauge



24700 One Person Brake Bleeder Tool

- Simple design for ease of use
- No springs, no diaphragms, no moving parts, no connections to leak, and no way air can re-enter the system once the brake pedal is released
- Instructions included



36700 2-In-1 S-Cam Brake Tool

This tool offers technicians a more efficient method for changing brake shoes on nearly medium or heavy-duty, drum-style air brake setups.

- An S-shape portion, on the opposite end, enables the user to position the brake shoes in a way that allows leverage for installation of the rollers
- The hooked end forces the brake shoes apart for the rollers to be installed faster and more safely

364 Parking Brake Tool

Application requires a lower profile brake spring tool with more a longer reach. The user can put the tip of this tool through the access hole and engage the spring cup on 2000 and current Tacoma, Tundra, FJ Cruiser, 4Runner, Land Cruiser, and Camry.

- Specially designed tip to engage the shoe hold down spring cup on Toyota vehicles
- For use on 2000 and current Tacoma, Tundra, FJ Cruiser, 4Runner, Land Cruiser, and Camry Models

**TUBING FABRICATION - In-Line Flaring Tools****165 Master Flaring Tool Kit**

- This design aligns the adapters, cone, and tube to make perfect factory flares every time
- Clamp and set screws apply pressure directly over the tube, greatly reducing the chance of the tube slipping, while also increasing the durability of the tool
- Low-profile and compact design allows the user to make flares on the vehicle in tight spaces, such as along frame rails or the engine compartment, saving the user time from having to remove components or complete lines to make repairs

For tubing with outer diameters:

3/16", 1/4", 5/16", and 3/8" double and single flares
4.75mm, 6mm, and 8mm double and bubble flares

**166 Hydraulic In-Line Flaring Tool**

Integrates hydraulic assist to create an easy to use, versatile kit. This time saving tool enables technicians to make perfect flares every time, even in tight access areas for on-car applications. It handles single, double, and bubble flares with the option to expand into quick connect fitting.

Tubing Sizes:

SAE: 3/16", 1/4", 5/16", and 3/8"

Metric: 4.75mm, 6mm, and 8mm

- Creates single, double and bubble flares with the option to expand into quick connect fittings
- Includes Constant Tension Tube Cutter

**154, 161, and 164 In-Line Flaring Tools**

These patented, low-profile sets are designed to enable users to make single or double flares with soft, thin walled steel or copper tubing anywhere, including tight spaces on the vehicle. They also enable the technician to use a ratchet or wrench for added torque when needed. The double-clamp and hex body keep tube from slipping, keeping flares centered.

- Low-profile design allows for use on or off the vehicle
- Designed to be used with a ratchet to make flares easier
- In-line design makes a more accurate flare
- Double clamp and hex screw design keep the tubing locked tightly in position
- For use on thin walled steel and copper tubing
- Available in SAE (164), Metric (154) and Auto-Specific Set (161)
- Patent Pending

Contains:

154, In-Line Flaring Tool Metric (Contain 4.75mm, 5mm, and 6mm)

161, In-Line Flaring Tool Auto-Specific Set (Contains only 3/16" and 4.75mm)

164, In-Line Flaring Tool SAE (Contains 3/16", 1/4", and 5/16")



TUBING FABRICATION - In-Line Flaring Tools



160 Brake Line Flaring Tool

- Convenient handle to make brake line flaring easier
- Flares 3/16" and 4.75mm tubing for double flares

TUBING FABRICATION - Basic Flaring Tools



153 Metric Double Flaring Tool

- Designed to withstand high pressures necessary to double-flare soft steel tubing as well as single-flare soft copper, aluminum, and brass tubing
- Set includes drop forged compressor yoke, 5 double-flare adapters and threaded die holding bar with size capacity 4.15mm, 5mm, 6mm, 8mm and 10mm. Blow molded case



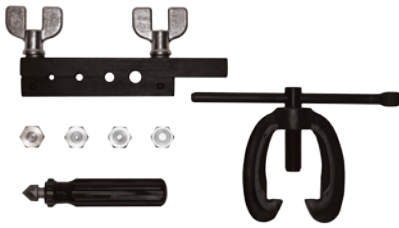
163 Double Flaring Tool

- This 45-degree double flaring tool set is designed to withstand the pressure necessary to double flare soft steel tubing, as well as single flare soft copper, aluminum, and brass tubing.

Includes:

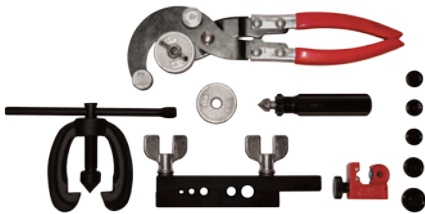
Five double flare adapters, drop forged compressor yoke, and bar assembly w/ size capacity- 3/16", 1/4", 5/16", 3/8", and 1/2"

TUBING FABRICATION



82700 Metric Bubble Flaring Kit

- Forms Bubble Flares in soft steel and copper tubing
- Flares metric Hydraulic brake lines used foreign and domestic vehicles
- Works on 4.75mm, 6mm, 8mm, 10mm tubing
- Makes Bubble Flares in one operation
- Comes in a blow-molded case



82800 SAE Tube Flaring Kit

- Features all the tools a technician will need to properly fabricate SAE single and double flares on soft steel or copper tubing
- For 3/16", 1/4", 5/16", 3/8", and 1/2" outer diameter tubing
- Comes in a blow-molded case

Contains:

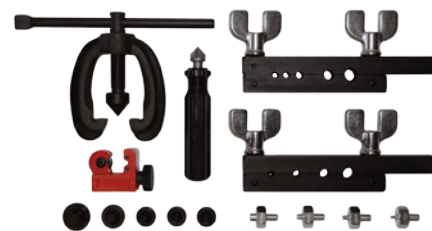
- (1) 163, Double Flaring Tool
- (1) 151, Mini Tube cutter
- (1) 758, Heavy Duty Tube Bender (plier-type)
- (1) Tubing reamer

82900 SAE and Metric Tube Flaring Kit

- Features all the tools necessary to create single, double and bubble (metric only) flares on soft steel and copper tubing
For SAE 3/16", 1/4", 5/16", 3/8", and 1/2"; metric sizes (bubble flares) 4.75mm, 6mm, 8mm, 10mm outer diameter tubing
- Comes in a blow-molded case

Contains:

- (1) **163**, Double Flaring Tool
- (1) **82700** Metric Bubble Flaring Tool
- (1) **151**, Mini Tube Cutter
- (1) Tubing Reamer



TUBING FABRICATION - Tubing Cutting and Fabrication

151 Mini Tubing Cutter

- Cuts soft and Copper tubing 1/8" to 5/8" in Diameter
- Alloy Steel cutting wheel



159 Mini-Mini Constant Tube Cutter

Utilizes springs to keep consistent compression on the cutting blade, allowing the user to cut through thin walled steel tubing without having to continually readjust the cutter and making the task of cutting through steel walled tubing faster and easier.

- 2" length allows tool to work effectively in tight spaces
- Handles the smallest tubing up to 5/8" tubing
- Same Length as the TC123C but with the added constant tension function
- Features a replaceable blade, **159-1** (order separately)



157 Constant Pressure Tube Cutter (Tubing sizes from 3/16" to 7/8")

Utilizes a spring to keep consistent compression on the cutting blade, allowing the user to cut through thin walled steel tubing without having to continually readjust the cutter.

Simply turn the adjustment handle until the alignment marks line up, then turn the cutter to until the tubing is cut. Makes the task of cutting through steel walled tubing faster and easier.

- Handles tubing sizes from 3/16" to 7/8" outer diameter
- Professional grade quality
- Features a replaceable blade, **157-600** (order separately)



158 Large Constant Pressure Tube Cutter (Tubing sizes from 1/8" to 1-1/8")

Utilizes a spring to keep consistent compression on the cutting blade, allowing the user to cut through thin walled steel tubing without having to continually readjust the cutter.

Simply turn the adjustment handle until the alignment marks line up, then turn the cutter to until the tubing is cut. Makes the task of cutting through steel walled tubing faster and easier.

- Handles tubing sizes from 1/8" to 1-1/8" outer diameter
- Professional grade quality
- Features a replaceable blade, **157-600** (order separately)



Category continued on the next page >>>

TUBING FABRICATION - In-Line Flaring Tools



160 Brake Line Flaring Tool

- Convenient handle to make brake line flaring easier
- Flares 3/16" and 4.75mm tubing for double flares

TUBING FABRICATION - Basic Flaring Tools



153 Metric Double Flaring Tool

- Designed to withstand high pressures necessary to double-flare soft steel tubing as well as single-flare soft copper, aluminum, and brass tubing
- Set includes drop forged compressor yoke, 5 double-flare adapters and threaded die holding bar with size capacity 4.15mm, 5mm, 6mm, 8mm and 10mm. Blow molded case



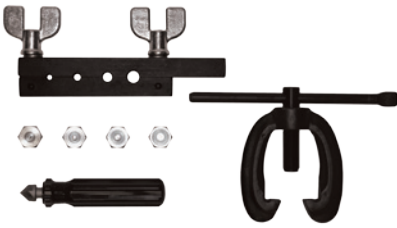
163 Double Flaring Tool

- This 45-degree double flaring tool set is designed to withstand the pressure necessary to double flare soft steel tubing, as well as single flare soft copper, aluminum, and brass tubing.

Includes:

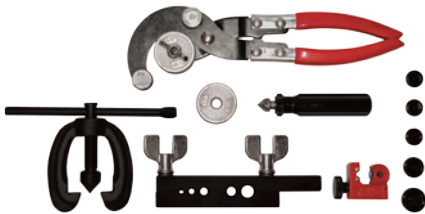
Five double flare adapters, drop forged compressor yoke, and bar assembly w/ size capacity- 3/16", 1/4", 5/16", 3/8", and 1/2"

TUBING FABRICATION



82700 Metric Bubble Flaring Kit

- Forms Bubble Flares in soft steel and copper tubing
- Flares metric Hydraulic brake lines used foreign and domestic vehicles
- Works on 4.75mm, 6mm, 8mm, 10mm tubing
- Makes Bubble Flares in one operation
- Comes in a blow-molded case



82800 SAE Tube Flaring Kit

- Features all the tools a technician will need to properly fabricate SAE single and double flares on soft steel or copper tubing
- For 3/16", 1/4", 5/16", 3/8", and 1/2" outer diameter tubing
- Comes in a blow-molded case

Contains:

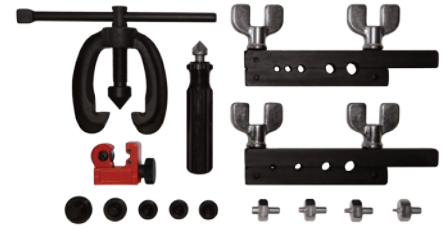
- (1) 163, Double Flaring Tool
- (1) 151, Mini Tube cutter
- (1) 758, Heavy Duty Tube Bender (plier-type)
- (1) Tubing reamer

82900 SAE and Metric Tube Flaring Kit

- Features all the tools necessary to create single, double and bubble (metric only) flares on soft steel and copper tubing
For SAE 3/16", 1/4", 5/16", 3/8", and 1/4"; metric sizes (bubble flares) 4.75mm, 6mm, 8mm, 10mm outer diameter tubing
- Comes in a blow-molded case

Contains:

- (1) **163**, Double Flaring Tool
- (1) **82700** Metric Bubble Flaring Tool
- (1) **151**, Mini Tube Cutter
- (1) Tubing Reamer



TUBING FABRICATION - Tubing Cutting and Fabrication

151 Mini Tubing Cutter

- Cuts soft and Copper tubing 1/8" to 5/8" in Diameter
- Alloy Steel cutting wheel



159 Mini-Mini Constant Tube Cutter

Utilizes springs to keep consistent compression on the cutting blade, allowing the user to cut through thin walled steel tubing without having to continually readjust the cutter and making the task of cutting through steel walled tubing faster and easier.

- 2" length allows tool to work effectively in tight spaces
- Handles the smallest tubing up to 5/8" tubing
- Same Length as the TC123C but with the added constant tension function
- Features a replaceable blade, **159-1** (order separately)



157 Constant Pressure Tube Cutter (Tubing sizes from 3/16" to 7/8")

Utilizes a spring to keep consistent compression on the cutting blade, allowing the user to cut through thin walled steel tubing without having to continually readjust the cutter.

Simply turn the adjustment handle until the alignment marks line up, then turn the cutter to until the tubing is cut. Makes the task of cutting through steel walled tubing faster and easier.

- Handles tubing sizes from 3/16" to 7/8" outer diameter
- Professional grade quality
- Features a replaceable blade, **157-600** (order separately)



158 Large Constant Pressure Tube Cutter (Tubing sizes from 1/8" to 1-1/8")

Utilizes a spring to keep consistent compression on the cutting blade, allowing the user to cut through thin walled steel tubing without having to continually readjust the cutter.

Simply turn the adjustment handle until the alignment marks line up, then turn the cutter to until the tubing is cut. Makes the task of cutting through steel walled tubing faster and easier.

- Handles tubing sizes from 1/8" to 1-1/8" outer diameter
- Professional grade quality
- Features a replaceable blade, **157-600** (order separately)



Category continued on the next page >>>



169 Double Deburr Tool

- Designed to work on both I.D. and O.D. of cut lines to remove burrs when performing secondary operations to tubes
- Constructed of an aluminum body and high-speed steel cutting edges to hold up in a shop environment
- Works on soft steel or copper tubing
- This two-in-one tool is easy to use and features a retractable blade for safe storage
- The tool has a working size range of 1/8" -1/2" (3mm-12mm)



758 Heavy-Duty Tubing Bender

- Bends 3/16", 1/4", 5/16", and 3/8" diameter copper and steel tubing
- Will not cause kinking or collapsing
- Includes two roller adapters



75902 Tube Bend Mirror Adaptors

- Adaptors are used to accurately recreate or make matched runs of brake lines often in complex configurations
- For steel, copper, and plastic-coated brake lines with diameters of 3/16" (4.75mm) or 1/4" (6.3mm)

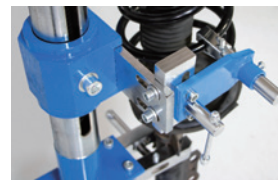
SUSPENSION AND WHEEL - Suspension



91300 Floor-Mounted, 2,200 lbs. Spring Compressor

The heavy-duty construction and Adaptive Spring Bracket allow the user to single-handedly compress many of the strut assemblies found on passenger cars, light-trucks, vans, and SUV's.

- Adaptive Spring Bracket can be configured in multiple configurations
- For strut assemblies with spring coils 3.5" to 8.75" wide
- Accepts maximum spring height of 19"
- Can be used with varying coil diameters up to 5/8"
- Easy, one-person use
- Can be mounted to the floor (hardware not provided)



200 Torsion Bar Unload Tool

- For relieving tension from the torsion bar to remove the torsion bar
- Utilizes a larger C-frame design to increase the application range for more vehicles
- Includes an adapter for non-GM applications
- Heavy-duty construction
- Includes an adapter for using tool on non-GM applications

Applications:

1988 and up GMC and Chevrolet 1/2-ton, 3/4-ton and 1-ton trucks.
2011 and up GM HD trucks, S-10 Blazers, S-15 Jimmys and 4WD trucks with 4.3L engines.
GM K-3500 series with HD chassis, including GM 5-lug, 6-lug and 8-lug vehicles

90200 Master Spring Compressor Set

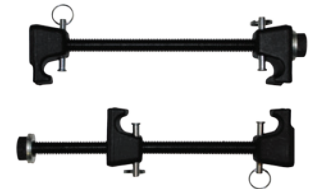
Featuring our two most popular spring compressors Master MacPherson Strut Tool and the Coil Spring Compressor, this set allows you to safely and easily compress nearly any automotive spring to replace shock absorbers, spring sets, repair bent struts or strut tubes and repair damaged spindles.

- Safely and easily compress many automotive strut/spring combinations
- Constructed of high-strength alloys for strength and durability
- MacPherson Strut Tool comes with safety hooks for added safety
- Comes in a blow-molded case



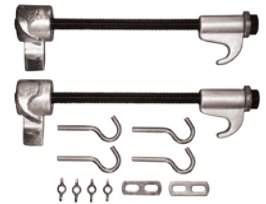
513 Master Macpherson Strut Tool Set

- The preferred tool of professionals when needing to quickly compress the coil spring to replace shock absorber, spring sets, repair bent strut or strut tube and repair damaged spindle
- Instructions and safety hooks included
- Not for use with impact tools



512 Macpherson Strut Tool

- Designed to be used on vehicles equipped with MacPherson Struts
- Allows user to quickly compress the coil spring to replace shock absorber, spring sets, repair bent strut or strut tube and repair damaged spindle
- Instructions and safety hooks included
- Not for use with impact tools



510 Coil Spring Compressor

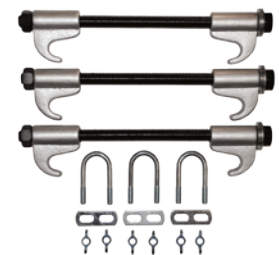
- Quickly and safely compress coil springs on many passenger cars and pick-up trucks
- Not for use with impact tools



91000 Coil Spring Clamps

This heavy-duty tool allows for easy removal or installation, where removal of spring through the center is not possible.

- Universal position clamps for a wide array of applications
- Tool comes with safety U-Bolts
- Not for use with impact tools



SUSPENSION AND WHEEL - Front End and Steering

197 Ball Joint Super Set

- Allows for the removal and installation of press-fit ball joints on many GM and Ford light-duty trucks, vans and SUVs through 2003; Dodge light trucks through 1998; Dodge vans, Durango and Dakota through 2003; and Honda Accord, Civic, del Sol, and Prelude through 2001
- C-frame tool can be used alone to remove and replace universal joints
- Comes complete in durable case



Category continued on the next page >>>



196 Ball Joint Removal and Installation Kit

- Removes and installs press-fit parts such as ball joints, universal joints, and truck brake anchor pins

Contains:

3 receiver tubes (2-3/4" I.D. x 3" O.D., 2-1/4" I.D. x 2-1/2" O.D., and 1-3/4" I.D. x 2" O.D.) Installation and removing adapters: 1 installing cup, and blow-molded case.



185 Front End-Service Kit

The Front-End Service Kit Includes five tools used in the servicing of ball joints, pitman arms, and tie rods on most vehicles.

- Large and small Pitman arm puller for ball Joint applications
- Three different tie rod pullers
- Two ball joint separators
- Comes in a durable blow-molded case



182 Tie Rod End Tool

- Use to force out tie rod ends from spindles and steering arms on virtually all domestic and import cars with tie rod screw diameter up to 3/4"
- Swivel head with a cup-style end removes the chance of damage and frustration caused by other less effective methods like hammering
- Opens to 1-5/8", for larger jobs use our 188 or 194 tie rod pullers



184 Ball Joint Separator

- Use to separate ball joints from the spindle
- Threaded force screw allows the tool to be used on different size ball joints
- For on virtually and domestic and import vehicles



186 Pitman Arm Puller

- Heavy-duty tool designed to remove pitman arms from late-model cars and light trucks
- Yoke is forged from high grade alloy steel and heat-treated
- 1-5/16" opening, 2-1/2" pull



188 Outer Tie Rod Puller

- Our most versatile puller can be used on a wide array of tie rod ends and ball joints, from cars to light trucks with various styles of steering knuckles
- Specially designed jaws and cup-style end on the force screw removes the chance of damage caused by other less effective methods like hammering
- This tool has a working range of 4" of spread and a reach of 3-5/8"



194 Tie Rod End Puller

- Can be used to remove both tie rod ends and pitman arms on many cars and light trucks
- Cap screw has a 5/8" square drive socket
- 2-1/4" of pull travel and over an inch of jaw opening

504 Bushing Driver Set

- Remove or install bushings from 3/8" to 1-3/8" in diameter found many in cars, trucks, tractors, construction equipment, electric motors, and many other components containing bushings
- Includes bushing adapters ranging from 3/8" to 1-3/8", large, medium, and small driver handles



946 Inner Tie Rod Removal Tool

- Turns smooth tie rods easily
- Simply slide tool over the end and tighten collar to allow access with an extension
- Can remove Inner tie rod without removing the outer tie rod
- No more bulky tools to store
- Inexpensive and effective way to turn these smooth tie rod ends



947 Heavy-Duty Inner Tie Rod Wrench

- Works to remove multiple inner tie rods of cars, light trucks, and SUV's, including the hex tubes, round tubes with flats, and round tubes with no flats, without having to completely remove the tie rod assembly
- Accepts larger tie rod tubes than most other similarly designed tools, ranging from 25mm-55mm
- Fixed position rings provide added strength and durability
- Designed to use in limited access areas
- Patented, force-multiplying cam design



SUSPENSION AND WHEEL - Wheel and Hub

839 6-Piece 4WD Locknut Socket Set

This high-quality steel, six-piece socket set features 1/2" square drives that enable technicians to use ratchets, breaker bars and torque wrenches in their applications.

Includes:

- 4-lug socket
- 6-lug socket
- Toyota, 4-lug lock nut socket
- Ford, 4-lug lock nut socket
- FWD front spindle puller
- Comes in a durable blow-molded case



966 8-Piece, 6-Point Axle Nut Socket Set

- Features eight 1/2", 6-point, deep alloy sockets ideal for use in removing and installing axle nuts on a wide variety of domestic and import cars, trucks and SUV's
- The extra-long design ensures complete contact between the nut and socket and prevents slipping or distortion of the axle nuts during application
- Sizes: 29mm, 30mm, 32mm, 34mm, 35mm, 36mm, 38mm, and 39mm
- Comes in a durable blow-molded case



Category continued on the next page >>>



976 8-Piece, 12-Point Metric Axle Nut Socket Set

- Features eight heavy-duty metric sockets that fit axle nuts and automatic transmission tail output shafts on Toyota, Lexus, Chrysler, Dodge, Jeep, Audi, Volkswagen, and BMW, as well as many other makes
- Sizes: 29mm, 30mm, 32mm, 34mm, 35mm, 36mm, 38mm, and 39mm
- Comes in a durable blow-molded case



90703 Dodge Hub Nut Socket

Fits rear axle locknuts of 2006-2014 Dodge/Ram trucks with six holes. Use this tool when removing and installing rear hubs and eliminate the struggles and potential damage caused by other methods.

- 2006-2014 Dodge®/Ram® 1500-5500 models
- Reduces damage to components
- Great tool to use when torquing rear wheel bearings
- Heavy-duty one-piece construction with rust resistant finish
- Utilizes a 3/8" square drive
- Direct comparison to Mopar® P/N: 8954A



977 Toyota Front Hub Nut Socket

- Designed to fit lock nuts on 2007 and up 2WD Toyota 4 Runners and Tundra (2008-2014 Sequoia) 8-Pin design with 3/4" female square drive
- Comparable to Toyota Factory tool #09318-12010-8Pin and 09602-60010
- Allows easy removal and installation on front hub locknut without damage to the nut
- Removal and installation of front hub locknuts for specific Toyota vehicles



90700 2-in-1 Dodge and Ford Hub Removal Tool

This 2-in-1 tool allows you to quickly and effortlessly free front wheel hubs of Dodge and Ford trucks with the force provided by vehicle's the power steering, without damage to expensive assemblies and other possible components. Put together, this tool is applicable to Ford F250 and F350 trucks. Remove the adapter, the tool is now ready for Dodge 2500 and 3500 trucks. No other hub removal tool provides multi-vehicle applications.

- Reduces the time it takes to complete front-end related jobs such as hub removal, replacing axle shafts, U-joint and axle seals
- Combination of the Dodge Hub Removal Tool and Ford Hub Removal Adapter
- Quickly adapts for Ford and Dodge applications
- Ford adapter has an integral ring for protection of the stud threads
- Uses the force of the power steering system to loosen the hub assembly, instead of having to use other methods which can possibly damage the hub assembly



90701 Dodge Hub Removal Tool

Uses the force from the vehicle's power steering system to easily free the front wheel hubs, without damaging the hub or other components.

- Designed to remove the front hubs of 3/4-ton (2500) and 1-ton (3500) Dodge trucks
- Reduces the time it takes to complete front-end related jobs such as hub removal, replacing axle shafts, U-joint and axle seals
- Replaces the 90300

90702 Ford Hub Remover Adapter

This adapter is used to convert our Dodge Hub Removal Tool for use on Ford truck applications, to easily free the front wheel hubs, and without damaging the hub or other components.

- Designed to remove the front hubs of 3/4-ton (F-250) and 1-ton (F-350) Ford trucks
- Reduces the time it takes to complete front-end related jobs such as hub removal, replacing axle shafts, U-joint and axle seals
- Cannot be used on its own



904 Wheel Bearing Tool

- Replace wheel bearings on front-wheel drive cars and light trucks, without having to remove the steering knuckle and strut assembly
- Eliminates the need for a front-end alignment once completed



94800 Hub Puller

- Removes wheel hubs mounted on tapered axles and press fit rear brake drums
- Can be adjusted by legs to an 8-in. diameter bolt circle
- Heavy-duty construction, made of alloy steel and drop forged
- Center screw 1-14" x 9" with a 1-1/8" hex head



526 Flange Type Axle & Front Wheel Hub Puller

- For use on domestic and import cars and light trucks
- Range is 3 3/4" to 4 1/2"
- For use on 4, 5, or 6 bolt stud design and all non-C Lock GM axles
- May be used with Cal-Van 498, Flange Type Puller



332 Hub Resurfacing Kit

Works with a power drill to quickly remove rust from studs, rotors, and hub surface on nearly any vehicle.

- Complete with a holder and five sanding discs
- Quick-connect sanding pads
- For best results, the device should be operated at speeds of 10,000 rpm or less



75510 16-Piece Master Wheel Locking Nut Key Set

Locking lug nuts are a great deterrent of wheel theft, but for mechanics, they can quickly make an easy job more difficult. This set makes removing wheel locks simple. This set consists of 8 internally splined bits along with 8 hex and star bits.

- Designed for removing many OEM and aftermarket specific locking wheel lug nuts
- Reduces chances of damaging lug nuts or wheels
- Chrome-vanadium construction and rust-resistant, black oxide finish
- Contains eight inner-splined keys and eight outer-splined keys
- All organized in a blow-molded case

Inner-splined sizes:

5-spline Short 5/8", 6-spline 41/64", 6-spline 45/64", 7-spline Medium 5/8", 7-spline Short 11/16", 7-spline Long 3/4", 12-spline 11/16", and 12-spline 13/16"

Outer-splined sizes:

8-pt Star 7/16", 8-pt Star Lug 5/8", 9-pt Star Lugs 1/2", 10-pt Star Lug 1/2", Fluted Hex 12mm Outer, Hex Lug 12mm, Hex Lug 15mm, and Hex Lug 9/16"



Category continued on the next page >>>



16 Quick-Change Wheel Stud Cleaner Kit

- Allows for quick and easy stud cleaning
- Snap-lock heads can easily be interchanged to fit the user's needs
- Includes hex bit to 1/2" drive adapter
- Designed to be used with a cordless drill

GENERAL HAND TOOLS - Ratchet and Wrenches



906 Finger Bit Driver

- Convenient tool allows access into the tightest of areas
- Heavy-duty mini driver uses 1/4" square drive, 1/4" hex bits
- Generates substantial torque and comes in bright easy to identify colors
- Available in 20 (90620) & 30 (90630) Piece Merchandise



90620, 90630 Finger Bit Driver Merchandisers

- Allows access into tight areas using 1/4" and 3/8" sockets
- Diamond knurled design for grip

90620, Finger Bit Driver Merchandiser - 20 piece

90630, Finger Bit Driver Merchandiser - 30 piece



100 Master Finger Bit Driver Set

- Includes some of the most popular finger bit drivers available
- Low profile for access to tight areas
- Knurled bodies for sure grip



104-03 Finger Socket Driver 3-Pack

- Allows access into tight areas using 1/4" and 3/8" sockets
- Diamond knurl design for positive grip
- Includes: (1) **102**, 3/8" male - 1/4" female, (1) **103**, 1/4" male - 3/8" female, (1) 3/8" male - 3/8" female



108-BLUE 1/4" Mini Finger Ratchet

- Small size great for tight areas
- Reversible finger ratchet with aluminum knurled outer ring for sure grip
- 1/4" Drive on one side and 1/4" Hex Drive on other side



109-BLUE 3/8" Finger Mini Ratchet Drive

- Small size great for tight areas
- Reversible finger ratchet with aluminum knurled outer ring for sure grip
- 1/4" Drive on one side and 1/4" Hex Drive on other side

450 Tight Access Drive Wrench

A gear-driven metric wrench set solution for accessing difficult to reach areas, where a box type wrench would not be practical.

- Dramatically reduces the time needed to remove fasteners in awkward areas
- Comes in a set of 5 (10mm, 12mm, 13mm, 14mm, 15mm)
- Includes 3/8" drive socket adapter
- Patented



480 1/2" Drive Breaker Bar

- Removes wheel hubs mounted on tapered axles and press fit rear brake drums
- Can be adjusted by legs to an 8-in. diameter bolt circle
- Heavy-duty construction, made of alloy steel and drop forged
- Center screw 1-14" x 9" with a 1-1/8" hex head



668 Pistol Grip LED Lighted Screwdriver

- Screwdriver can either be a straight-grip or pistol-grip screwdriver
- Removable shank for use with other drivers
- LED light on handle for dark areas
- Bits stored in handle
- Professional quality, high-torque screwdriver



GENERAL HAND TOOLS - Ratchet Accessories

482 90-Degree Gearless Angle Drive (1/4")

- Allows access to hard to reach areas
- Replaces hard to use universal adapters
- Exceeds ANSI specs torque max for universal socket adapters
- Patented



483 90 Degree Gearless Angle Drive (3/8")

- Allows access to hard to reach areas
- Replaces hard to use universal adapters
- Exceeds ANSI specs torque max for universal socket adapters
- Patented



485 45-Degree Gearless Angle Drive (1/4")

- Allows access to hard to reach areas
- Replaces hard to use universal adapters
- Exceeds ANSI specs torque max for universal socket adapters



487 Drive Adapter Set

- Transform ratchets and other drive tools, like air ratchets, to use for multiple drive-size sockets
- Durable, impact-rated

Set of drive adapters that step:

1/4" to 3/8"

3/8" to 1/2"

1/2" to 3/4"



Category continued on the next page >>>



488 Twin Spin Converter (1/4"-3/8")

- Allows use of a 1/4" drive socket with a 3/8" drive ratchet and vice versa
- Can withstand higher torque than traditional adapters
- Can be used as a small extension or hand drive for tight access
- Patented



489 Twin Spin Drive Converters (3/8"-1/2")

- Allows use of a 3/8" drive socket with a 1/2" ratchet and vice versa
- Can withstand higher torque than traditional adapters
- Can be used as a small extension or hand drive for tight access
- Patented



490 Versa-Drive (2-in-1 Adapters)

When used in conjunction with 1/4" hex drive tools like impact drivers or 1/4" drill chucks, the Versa-Drive is a real time saver in a variety of applications.

- 1/4" Hex shank adapters
- Enables users to easily switch between sockets and hex bits
- Impact rated for use in 1/4" cordless and pneumatic impact drivers
- For torques up to 167 ft/lbs. or 2,000 in/lbs.

Contains:

491, 3/8" Drive adapter with 1/4" hex for bits

492, 1/2" Drive adapter with 5/16" hex for bits



48100 Master Ratchet Accessory Set

- Includes some of the most popular items available from Cal-Van
- Everything needed to get into tight access areas, around corners, and adapt sockets to step up and down

Set Includes:

Two Gearless Angle Drives, two Twin-Spin Converters and one Finger Bit Driver w/bits



47 Light Bulb Pliers

- Remove and install small automotive bulbs with ease
- Gently yet firmly grips small bulbs with rubber coated tips
- Extended reach for recessed, corroded, and broken bulbs
- Scissor design with cushioned grip for easy handling



52 Oetiker Clamp Pliers

- For use with Oetiker and other crimp-style clamps
- Two-step function allows user to properly position clamp before tightening
- Innovative head design requires less effort than other versions
- Integrated handle stop ensures proper clamping each time

54 Adjustable Indexing Trim Clip Pliers

- Removes plastic trim anchors with center pins without damage to the pin or anchor
- Adjustable head that can be angled when needing to access tight, hard to reach areas
- Allows for one-handed use and keeps the components intact by engaging two sides at once
- Steel construction for strength and durability and double-dipped cushioned and textured handles for increased grip



58 45-Degree Hose Clamp Pliers

- Special tip designed to grip almost any hose clamp from any direction
- Offset angle design for hard to reach applications and ease of use
- Locking, ratcheted jaws enable user to keep pliers locked on to clamps
- 11" Overall length, extra-long reach



59 Hose Clamp Pliers

- Special tip designed to grip almost any hose clamp from any direction
- Locking ratcheted jaws enable user to keep pliers locked onto clamps
- 11" overall length, extra-long reach



1016 Snap Ring Pliers Set

- Features fixed-tip pliers easily converted for external to internal use
- Comfortable, ergonomic handle grips
- Constructed of heat-treated steel for maximum strength and reliability
- Made up of straight and angled tips

Set includes:

- 1017, .038 straight pliers
- 1018, .038 45-degree pliers
- 1019, .038 90-degree pliers
- 1020, .047 straight pliers
- 1021, .047 45-degree pliers
- 1022, .047 90-degree pliers
- 1023, .070 straight pliers
- 1024, .070 45-degree pliers
- 1025, .070 90-degree pliers
- 1026, .090 straight pliers
- 1027, .090 45-degree pliers
- 1028, .090 90-degree pliers



48 Offset Snap Ring Pliers

- Strong enough to remove U-joint snap rings and still have the precision for delicate plastic clips on interior and body panels
- 75-degree offset configuration allows for greater access to narrow and hard to reach areas
- Ergonomic handle design



49 Snap Ring Pliers

- Strong enough to remove U-joint snap rings and still have the precision for delicate plastic clips on interior and body panels
- Ergonomic handle design



Category continued on the next page >>>



16000 Radiator Hose Pinch Off Pliers

- Service the coolant system without having to drain fluid from the cooling system
- Clamps heater or radiator hoses shut and jaws swivel for parallel force
- Automatic, locking ratchet
- May also be used to pinch off vacuum lines and fuel lines
- Not for use on wire reinforced radiator hoses (see 16500)



16500 Heavy Duty Pinch Off Pliers

- For use with wire reinforced radiator hoses
- Eliminates the need to drain systems when servicing cooling systems
- Clamps heater or radiator hoses shut and jaws swivel for parallel force
- Automatic, locking ratchet
- May also be used to pinch off vacuum lines and fuel lines



934 52-Piece Torx Bit Set

This ultimate Torx® collection includes Torx® bit sockets, Torx Plus® bits sockets, tamper-resistant Torx® bits, and Torx® socket for external bolts for use on most makes of cars and trucks, as well as many industrial, commercial and DIY applications

- Bits made from S2 steel to meet or exceed torque specifications
- Two-piece design more durable than a single piece for long life
- Torx® licensed

Contains the following:

Torx® sockets (E):

1/4" drive: E4, E5, E6, E7, E8 - 3/8" drive: E10, E12, E14, E16 - 1/2" drive: E18, E20, E22, E24

Torx® bits (T):

1/4" drive: T6, T8, T10, T15, T20, T25, T27, T30 - 3/8" drive: T40, T45, T47, T50, T55 - 1/2" drive: T60, T70.

Tamper-resistant Torx® bit (H):

1/4" drive: T8H, T10H, T15H, T20H, T25H, T27H, T30H - 3/8" drive: T40H, T45H, T50H, T55H - 1/2" drive: T60H

Torx Plus® Bit (TP):

1/4" drive: 8TP, 10TP, 15TP, 20TP, 25TP, 27TP, 30TP - 3/8" drive: 40TP, 45TP, 50TP, 55TP - 1/2" drive: 60TP



933 Master Torx Bit Set

- Complete set provides the most torque for all applications
- Bits composed of S2 Phosphate Manganese
- Comes in blow molded case for easy storage.
- Includes: Torx Bits: T-10, T-15, T-20, T-25, T-27, T-30, T-40, T-45, T-47, T-50, T-55. Tamper-Proof: T-10, T-15, T-20, T-25, T-27, T-30, T-40, T-45, T-50, T-55. Torx Sockets: E5, E6, E7, E8, E10, E12, E14, E16, E18, E20 (available separately)

Also Includes: 1/4" bit holder, 3/8" bit holder, 488 Twin Spin Drive Converter, and 906 Finger Bit Driver



932 Torx Socket Set with Holder (Internal)

- Twelve of the most popular Torx bits are conveniently assembled in a vinyl holder

Includes (available separately): T-10, T-15, T-20, T-25, T-27, T-30, T-40, T-45, T-47, T-50, T-60, and T-55

912 Extra-Long Torx Screwdriver Set

- Long shaft for hard to reach areas, 15-3/4" length
- Made of S-2 steel for strength

Set Includes: T-10, T-15, T-20, T-25, T-27, and T-30



917 Tamper-Proof Extra-Long Torx Screwdriver Set

- Long shaft for hard to reach areas, 15-3/4" length
- Made of S-2 steel for strength

Set Includes: T-10, T-15, T-20, T-25, T-27, and T-30



935 4-Piece Mortorq Set with Storage Rail

- Fits commonly used GM, Nissan and Mazda seat track and transmission bell housing bolts
- Used for differentials, door panels, suspension components and restraint systems

Set includes: #0, #1, #2, #3, #4



GENERAL HAND TOOLS - Damaged Fasteners

342 Stripped Hex Bolt Removers, SAE

- Perfect for removing stripped out hex screws
- Reverse twist of the hex key allows for easy removal of stripped hex screws
- Full range to remove most common SAE sizes
- Also available in metric



343 Stripped Hex Bolt Removers, Metric

- Perfect for removing stripped out hex screws
- Reverse twist of the hex key allows for easy removal of stripped hex screws
- Full range to remove most common metric sizes
- Also available in metric SAE



439 Stripped Hex Screw Set (Metric)-9 Pc Set

Used for removing rounded or stripped fasteners with internal drive heads.

- Can be used on new screws as well
- Reverse twist in the hex key bites into stripped out hex for easy removal

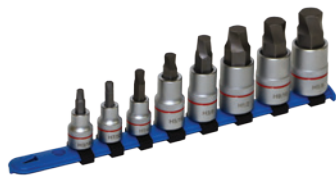
Sizes:

3/8" drive: 4mm, 5mm, 6mm, and 7mm

1/2" drive: 8mm, 10mm, 12mm, 14mm, 17mm



Category continued on the next page >>>



440 Stripped Hex Screw Set (SAE)-8 Pc Set

Used for removing rounded or stripped fasteners with internal drive heads.

- Can be used on new screws as well
- Reverse twist in the hex key bites into stripped out hex for easy removal

Sizes:

3/8" drive: 3/16", 7/32", 1/4"

1/2" drive: 5/16", 3/8", 1/2", 9/16", 5/8"



438 Spiral Screw Extractor Set

- Forged alloy steel, this spiral style extractor can be used to extract broken studs or screws
- Correct drill size for hole in part to be extracted is indicated on the tool

Available as individuals:

431, for removing screws shank 3/16"

432, for removing screws shank 1/4"

433, for removing screws shank 5/16"

434, for removing screws shank 7/16"



441 Fluted Screw Extractor Set

- Used to extract broken studs, screws, pipe, and pipe fittings
- Steel alloy with gradual taper and long flutes

Available as individuals:

441-1, screw/stud/bolt 1/4" and 5/16"

441-2, screw/stud/bolt 3/8"

441-3, screw/stud/bolt 7/16"

441-4, screw/stud/bolt 1/2" and 9/16"

441-5, screw/stud/bolt 5/8"

GENERAL HAND TOOLS - Inspection and Pick Up Tools



21 4-Piece 9-3/4" Hook and Pick Set

- Use to remove O-rings, wadding, springs, gaskets, etc.
- Retrieve items from tight or hard to reach areas
- High carbon steel picks that are heat-treated and polished
- Cushioned and textured handle handles for comfort and increased grip
- Use to mark plastic or metal surfaces



22 6-Piece Hook and Pick Set

- Use to remove O-rings, wadding, springs, gaskets, etc.
- Retrieve items from tight or hard to reach areas
- High carbon steel picks that are heat-treated and polished
- Cushioned and textured handle handles for comfort and increased grip
- Use to mark plastic or metal surfaces



23 Telescoping Pick Up Tool with 16 lbs. Capacity

- Use to retrieve items from hard-to-reach areas
- Magnetic head with shield to keep from sticking to surfaces and debris
- Closed the unit is 6-1/2" and the stainless-steel handle extends up to 37"
- Features an ergonomic, textured grip

25 Telescoping 2" Round Inspection Mirror

- 2-1/4" (57mm) round mirror
- Double ball joint allows mirror to swivel freely 360-degrees yet hold a desired position
- 7" insulated handle extends to 12"
- 17" overall length.



27 Telescoping Inspection Mirror

- 2" x 3 1/2" (51mm-89mm) rectangular mirror
- Double ball joint allows mirror to swivel freely 360 degrees yet hold a desired position
- 7" insulated handle extends to 12"
- 17" overall length



30 Magnetic Pick-Up Tool with 2-1/2 lbs. Capacity

- Use to retrieve items from hard-to-reach areas
- Sliding cap shield to keep from sticking to surfaces and debris
- Closed the unit is 5-1/2" and the stainless-steel handle extends up to 25-1/2"
- Features an ergonomic, textured grip



32 2-3/8" LED Lighted Inspection Mirror

- Mirror head swivels to nearly 360° to inspect hidden and hard to reach areas
- LED lighted head illuminates dark recesses
- Ball-joint connection is sturdy enough to hold the head at any angle
- Closed the unit is 6-1/2" and the stainless-steel handle extends up to 37"
- Features an ergonomic, textured grip
- Batteries included (2 – CR2016)



33 Magnetic Pick-Up Tool and LED Pen Light

- Use to retrieve items from hard-to-reach areas
- Durable aluminum body and LED flashlight
- Closed the unit is 7-1/4" and the stainless-steel handle extends up to 27-1/4"
- Features a convenient pocket clip
- Batteries included (4 – LR41)



35 Rectangular Inspection Mirror with Rotating LED Light

- Mirror head swivels to nearly 360° to inspect hidden and hard to reach areas
- ABS plastic shroud with dual LED lights to illuminate dim or dark areas for improved visibility
- Ball-joint connection is sturdy enough to hold the head at any angle
- Closed the unit is 6-3/4" and the stainless-steel handle extends up to 30"
- Features an ergonomic, textured grip
- Batteries included (2 – CR2032)



39 O-Ring Hook and Pick

- Dual pick design is ideal to remove O-rings, small oil seals, etc.
- Retrieve items from tight or hard to reach areas
- Ideal for transmissions, hydraulic pumps, and A/C repairs
- Knurled handles for increased grip
- Use to etch or scribe soft metal or plastic surfaces



Category continued on the next page >>>



226 Adjustable Magnetic Pickup Tool

- Magnet tool telescopes to 16" and will open to a full 27-1/2"
- Designed with a hex rod to eliminate potential for head to rotate under pressure
- Will easily pick up 1.5 lbs



287 Telescoping Magnetic Pickup Tool

- Pocket size magnet tool extends from 5-1/4" to 17-1/2"
- Complete with pocket clip
- Lifting capacity over 2 lbs.



627 Hook Scribe

- Two-point scribing tool has one (1) straight and one (1) bent point.
- Hardened points screw into a knurled steel body
- 8-1/4" overall length

GENERAL HAND TOOLS - General Tools



119 Magnetic Bit Rail

- 28-bit holder- holds 1/4" and 5/16" bits
- Magnetic backing attaches to toolbox or other surface for convenience
- Securely holds bits, bit sizes easily identified



264 Parts Cleaning Brush

- For heavy duty cleaning of metal and masonry surfaces
- 6-in. brush length with 14" overall length



351 All Purpose Awl

- Heavy duty tool for aligning work, scribing, and punching.
- Heat treated shank 1/4" x 4-3/4"



353 Denailer

The special recesses end allow user to force objects through and out of the tire, clearing the puncture for repair.

- Recessed end to engage the puncturing object
- 3" shaft, 6-1/2" overall length
- 5/16" point diameter

764 Exhaust Tail Pipe Cutter

- Comprised of thirteen large diameter (19mm) cutting wheels cut deep into exhaust pipes
- Cuts pipe from 3/4" to 3-1/4" (19mm-83mm) in diameter
- Will Not leave burrs
- Ideal for heavier gauge exhaust pipes
- Only 1/4 turn needed to cut
- Works well in hard to reach places



767 Ratcheting Tubing PVC Cutter

- Cuts industrial air hose, multi-purpose hose, heater and washer hose vacuum hose, non-metallic fuel line hose, PVC pipe, battery cables, and non-metallic air brake hose, up to 1 1/2" in diameter
- Features a quick release mechanism to quickly and easily open pliers for use
- Ratcheting action makes cutting easy
- Also features a locking mechanism for safe storage



878 Ratcheting Chain Wrench

- Chain wrench can be used on any object with a diameter from 5/8" to 5"



PAINT, BODY, SCRAPERS, AND KNIVES - Trim and Upholstery Tools

112 3-Piece Non-Marring Pick Set

- Access difficult to reach panels, remove O-rings, clips, small seals, and gaskets
- Diverse applications ranging from interiors to engines and transmissions
- Will not damage delicate, polished, or painted surfaces
- The ideal tool for intricate jobs



113 5-PC. Trim and Panel Clip Tool Set

- Ideal tool set for removing plastic fasteners, plastic clips for upholstery or panels
- Five different offsets with a range of three spreads (5mm, 7.5mm and 11mm)
- High-polish chrome finish and rubberized handles for additional grip
- Includes a foam storage tray

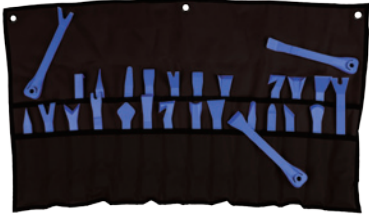


114 3-Piece XL Clip Lifter Set

- Designed for the most difficult to access clips and stubborn panels.
- Great for removing plastic fasteners, clips, and retainers often encountered when working with interiors and body panels
- Three different offsets and two spreads (5mm and 11mm)
- High-polish chrome finish and ergonomic rubber handles



Category continued on the next page >>>



115 27-PC Trim Tool Set

- For removing various trim fasteners, moldings, and wheel covers
- Removes adhesives from delicate surfaces
- Made from durable plastic to prevent unwanted damage
- Can be used to remove internal and external panels and fasteners
- Heavy-duty cloth roll-up case



116 3-PC. Mini Pry Bar Set

- Excellent, lightweight tool for small or delicate jobs
- Durable plastic construction eliminates unwanted damage to paint or trim
- Diverse applications, from interior to engine



117 5-PC. Trim Fastener & Molding Remover Set

- Five different sizes and styles of tools that allow easy removal of trim fasteners, moldings, and wheel covers
- Made of high strength, durable plastic to prevent damage to trim, moldings, alloy wheels or vehicle paint
- Can be used on trim fasteners and moldings inside, or outside, the vehicle



118 11-PC. Trim Tool Kit

- Eleven different sizes and styles of tools that allow easy removal of trim fasteners, moldings, and wheel covers
- Made of high strength, durable plastic to prevent damage to trim, moldings, alloy wheels or vehicle paint
- Can be used on trim fasteners and moldings inside, or outside, the vehicle



125 Upholstery Tool Set

- Features polished Stainless-steel Blades
- Includes 2 V-notch and U-notch tools and reverse-U door panel tool
- Made of high strength, durable plastic to prevent damage to trim, moldings, alloy wheels or vehicle paint



55 Body Clip Pliers

- Specially designed pliers will remove any clip found on trim, bumpers, etc.
- Steel levers enclosed in PMS plastic to prevent scratches
- The unique tip angle and size that make these the most versatile clip pliers on the market
- Patent pending



56 Recessed Body Clip Pliers

- Designed with the ability to remove push pins and body clips from bumpers and other areas of the vehicle that are recessed or have limited access
- Features a long reach with specially designed ends that help remove clip without damaging the clip with twisting or prying

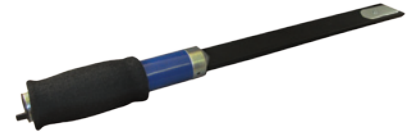
17 24" Urethane Cut Out Knife

- Windshield tool is made of rigid aluminum that will not flex
- Composed of a centered blade, so tool can be used from either side
- The securing screws are flush mounted prevent inadvertent dash and molding damage



26 18" Urethane Cut Out Knife

- This heavy-duty windshield knife gives that extra reach to cut hardened urethane down to the dash line
- Constructed of heavy-duty steel and aluminum, and has a padded ergonomic handle
- 18" overall length.
- Replacement blades: **536-1**



136 4-PC. Putty Knife Scraper Set

- Heavy-duty stainless steel, precision ground and polished
- Blades taper at tip to provide great flexibility and blade action
- Ergonomic, two-component plastic handles provide a non-slip grip
- Packaged in a storage tray. Professional quality set



536 Monster Knife

- Extra-large grip for added control
- Dual-material handle for a sure grip
- Equipped with a "Quick-Change Blade System"
- Available in 4-pack merchandisers.
- Replacement blades: **536-1**



536-4 Monster Knife 4-Pack Merchandiser

- Includes four Monster Knives
- Extra-large grip for added control
- Dual-material handle for a sure grip
- Equipped with a "Quick-Change Blade System"
- Replacement blades: **536-1**



701 Mini Scraper

Handy pocket-sized mini scraper is ideal for detail and body work, as well as scrapes stickers, labels, paint, and more Reversible blade is easily locked in place with thumbscrew for storage.

- Available in an assortment of colors

Also available:

701-30 Merchandiser - 30 piece

701-50 Merchandiser - 50 piece



Category continued on the next page >>>



701-30 and 701-50 Mini-Scraper Merchandisers

701-30 Merchandiser - 30 piece

701-50 Merchandiser - 50 piece

Handy pocket-sized mini scraper is ideal for detail and body work, as well as scrapes stickers, labels, paint, and more. Reversible blade is easily locked in place with thumbscrew for storage.

- Available in an assortment of colors
- Great for display on parts counters and check out areas



536-700 Mini Razor Knife

- Durable mini razor knife
- Available individually or 30-packs (**536-MERCH**)



717 Extended Razor Blade Scraper

- The 12" (305 mm), extra-long reach makes this the perfect tool for removing hard-to-reach inspection stickers from long, sloped windshields
- Blade clamp designed to prevent the blade from popping out

Includes:

One Poly guard blade and two standard single-edge blades inside storage handle



747 Scraper Mate Sticker Remover

- Economical, compact scraper is perfect for removing old stickers and paint blotches off windows
- Extends to 7-7/8" when fully opened and locked into position
- Holder tilts blade to give a better angle for getting into corners
- Blade folds into handle for safe storage



709 Poly Guard Blades

- Used to scrape in scratch risk areas
- Can be used many of our scraping tools
- Five (5) to a pack



52600 Scraper Set

- Includes our most popular scrapers in one complete set

Contains:

- (2) **701**, Mini Scrapers
- (1) **717**, Extended Scrapers
- (1) **747**, Folding Scraper

Part No.	Desc.	Page
16	Quick-Change Wheel Stud Cleaner Kit	46
17	24" Urethane Cut Out Knife	57
19	Stud Remover	30
20	Clutch Alignment Tool	28
21	4-Piece 9-3/4" Hook and Pick Set	52
22	6-Piece Hook and Pick Set	52
23	Telescoping Pick Up Tool with 16 lbs. Capacity	52
25	Telescoping 2" Round Inspection Mirror	53
26	18" Urethane Cut Out Knife	57
27	Telescoping Inspection Mirror	53
28	Pilot Bearing Puller with Slide Hammer	28
29	Blind Hole Puller Set	28
30	Magnetic Pick-Up Tool with 2-1/2 lbs. Capacity	53
31	Pilot Bearing Puller	28
32	2-3/8" LED Lighted Inspection Mirror	53
33	Magnetic Pick-Up Tool and LED Pen Light	53
35	Rectangular Inspection Mirror with Rotating LED Light	53
39	O-Ring Hook and Pick	53
47	Light Bulb Pliers	48
48	Offset Snap Ring Pliers	48
49	Snap Ring Pliers	48
52	Oetiker Clamp Pliers	48
54	Adjustable Indexing Trim Clip Pliers	49
55	Body Clip Pliers	56
56	Recessed Body Clip Pliers	56
58	45-Degree Hose Clamp Pliers	49
59	Hose Clamp Pliers	49
62	Brake Fluid Tester (DOT 4 only)	35
63	Window Tint Meter	22
64	High-Energy Ignition Tester	19
65	Noid Light Set	19
66	Universal Brake Fluid Tester (DOT 3/DOT 4/DOT 5.1)	35
69	Amp Alert	22
70	Heavy-Duty Circuit Tester	22
72	Amp Hound 2	23
73	Ripple Quick Tester	23
74	"The Original" Amp Hound	22
76	Deluxe 12-Volt and 24-Volt Relay Tester	23
78	LCD Test Light for 6V, 12V, 24V Systems	22
81	Logic Light Circuit Tester	22

Part No.	Desc.	Page
84	WiFi Borescope	23
100	Master Finger Bit Driver Set	46
104-03	Finger Socket Driver 3-Pack	46
108-BLUE	1/4" Mini Finger Ratchet	46
109-BLUE	3/8" Finger Mini Ratchet Drive	46
112	3-Piece Non-Marring Pick Set	55
113	5-PC. Trim and Panel Clip Tool Set	55
114	3-Piece XL Clip Lifter Set	55
115	27-PC Trim Tool Set	56
116	3-PC. Mini Pry Bar Set	56
117	5-PC. Trim Fastener & Molding Remover Set	56
118	11-PC. Trim Tool Kit	56
119	Magnetic Bit Rail	54
125	Upholstery Tool Set	56
134	Two & Three Jaw Combination Pullers	26
135	Ford Radio Remover Tool	24
136	Putty Knife Scraper Set	57
142	Antenna & Radio Socket Set	24
151	Mini Tubing Cutter	39
153	Metric Double Flaring Tool	38
154	In-Line Flaring Tools	37
157	Constant Pressure Tube Cutter (Tubing sizes from 3/16" to 7/8")	39
158	Large Constant Pressure Tube Cutter (Tubing sizes from 1/8" to 1-1/8")	39
159	Mini-Mini Constant Tube Cutter	39
160	Brake Line Flaring Tool	38
161	In-Line Flaring Tools	37
163	Double Flaring Tool	38
164	In-Line Flaring Tools	37
165	Master Flaring Tool Kit	37
166	Hydraulic In-Line Flaring Tool	37
169	Double Deburr Tool	40
171	Ford 6.0L Diesel Head Bolt Adapter	14
182	Tie Rod End Tool	42
184	Ball Joint Separator	42
185	Front End-Service Kit	42
186	Pitman Arm Puller	42
187	Steering Wheel Puller	26
188	Outer Tie Rod Puller	42
189	Harmonic Balancer Puller	28
192	Pulley Puller	26

Part No.	Desc.	Page
194	Tie Rod End Puller	42
195	Power Steering Pump Remover & Installer Kit	14
196	Ball Joint Removal and Installation Kit	42
197	Ball Joint Super Set	41
198	Subaru Crank Pulley Tool	17
199	Heavy-Duty U-Joint Puller	27
200	Torsion Bar Unload Tool	40
226	Adjustable Magnetic Pickup Tool	54
237	Two-Jaw Pullers	25
240	Two-Jaw Pullers	25
244TNZ	4-Piece Heater Hose Disconnect Set	13
253	Fuel Tank Locking Ring Tool	20
264	Parts Cleaning Brush	54
287	Telescoping Magnetic Pickup Tool	54
291	Truck & Tractor Filter Pliers	31
297	Filter Pliers	31
298	Filter Pliers	31
302	Adjustable Filter Pliers	31
332	Hub Resurfacing Kit	45
342	Stripped Hex Bolt Removers, SAE	51
343	Stripped Hex Bolt Removers, Metric	51
351	All Purpose Awl	54
353	Denailer	54
357	Disc Brake & Small Engine Hone	35
358	Disc Brake & Caliper Hone	35
360	Engine Cylinder Hone, 2"-7"	13
361	Replacement Stone Medium Grit, 220-240 Grit, Set of Three	13
361-01	Replacement Stone Fine Grit, 400 Grit, Set of Three	13
361-02	Replacement Stone Coarse Grit, 100 Grit, Set of Three	13
362	Adjustable Brake Cylinder Hone	36
364	Parking Brake Tool	37
386	Harmonic Balancer Puller	14
438	Spiral Screw Extractor Set	52
439	Stripped Hex Screw Set (Metric)-9 Pc Set	51
440	Stripped Hex Screw Set (SAE)-8 Pc Set	52
441	Fluted Screw Extractor Set	52
450	Tight Access Drive Wrench	47
480	Extendable 1/2" Drive Breaker Bar	47
482	90-Degree Gearless Angle Drive (1/4")	47
483	90 Degree Gearless Angle Drive (3/8")	47

Part No.	Desc.	Page
485	45-Degree Gearless Angle Drive (1/4")	47
487	Drive Adapter Set	47
488	Twin Spin Converter (1/4"-3/8")	48
489	Twin Spin Drive Converters (3/8"-1/2")	48
490	Versa-Drive (2-in-1 Adapters)	48
497	Heavy Duty Yoke Puller	27
499	Ford 7.3L Diesel Rear Main Seal and Sleeve Removal and Installation Kit	14
501	7-Ton Bar Type Puller Bearing Separator Set	25
502	5-Ton Bar Type Bearing Separator Pusher and Puller Set	25
503	Bearing Splitter	25
504	Bushing Driver Set	43
506	Adjustable Bearing Pusher & Installer	28
508	Small Bearing Splitter	25
509	Medium Bearing Splitter	25
510	Coil Spring Compressor	41
511	Large Bearing Splitter	25
512	Macpherson Strut Tool	41
513	Master Macpherson Strut Tool Set	41
526	Flange Type Axle & Front Wheel Hub Puller	45
536	Monster Knife	57
536-4	Monster Knife 4-Pack Merchandiser	57
536-700	Mini Razor Knife	58
549	Battery Terminal Clamp Spreader	24
553	Heavy-Duty Battery Post & Terminal End Brush	24
610	Diesel Exhaust Fluid Tester	33
611	17-Piece Electrical Back Probe Kit	21
612	Universal Ignition Spark Tester	20
613	20-Piece Electrical Back Probe Kit	21
627	Hook Scribe	53
641	Piston Ring Compressor Set	13
668	Pistol Grip LED Lighted Screwdriver	47
683	Master Disconnect Set	20
684	Line Quick Disconnect Tools	20
689	Fuel Line Plier	20
693	Ignition Point Files	20
700	Universal Brake Pad Spreader	34
701	Mini Scraper	57
701-30	Mini-Scraper Merchandisers	58
701-50	Mini-Scraper Merchandisers	58
702	Disc Brake Pad Spreader	34

Part No.	Desc.	Page
709	Poly Guard Blades	58
717	Extended Razor Blade Scraper	58
722	Disc Brake Piston Remover	34
723	Combination 2-Pin and 3-Pin Caliper Piston Rewind Tool	34
724	Brake Caliper Turn Back Tool Set	34
725	2-Pin Brake Rewind Tool	34
726	3-Pin Brake Rewind Tool	34
727	Universal Caliper Turn and Push-Back Tool	34
730	Magnetic Belt Holder	12
734	“The Grabber” Serpentine Belt Tool	12
735	Euro Stretch Belt Installation Tool	12
736	Stretch Belt Installation Tool	12
737	Subaru Stretch Belt Installer	12
738	Serpentine Belt Tool	12
747	Scraper Mate Sticker Remover	58
750	22-Piece ADP Kit	24
751	GM Thermostat Wrench	13
752	Variable Pin Spanner Wrench	14
754	3-in-1 Subaru Sprocket Tool	16
756	5-Piece Alternator Service Bit Set	24
758	Heavy-Duty Tubing Bender	40
762	Sub-Compact Brake Cylinder Hone	35
763	Replacement Stones	35
764	Exhaust Tail Pipe Cutter	55
767	Ratcheting Tubing PVC Cutter	55
785	Cup-Type Oil Filter Wrenches	32
788	Cup-Type Oil Filter Wrenches	32
789	Cup-Type Oil Filter Wrenches	32
791	Cup-Type Oil Filter Wrenches	32
803	Heavy-Duty Filter Strap Wrench	32
814	All-Size Filter Strap Wrench	32
839	6-Piece 4WD Locknut Socket Set	43
841	11-Piece Oxygen Sensor Socket Set	18
841-11	Sensor Thread Chaser (M18 x 1.5)	18
842	7-Piece Oxygen Sensor Socket Set	19
843	Oxygen Sensor Wrench	19
844	6 and 12-Point Flex O2 Wrench	19
855	Brake Bleeder Tank	36
878	Ratcheting Chain Wrench	55
891	Heavy-Duty Truck Oil Filter Wrenches	31

Part No.	Desc.	Page
892	Heavy-Duty Truck Oil Filter Wrenches	31
893	Heavy-Duty Truck Oil Filter Wrenches	31
904	Wheel Bearing Tool	45
905	Light-Duty U-Joint Puller	27
906	Finger Bit Driver	46
907	Intermediate U-Joint Puller	27
912	Extra-Long Torx Screwdriver Set	51
917	Tamper-Proof Extra-Long Torx Screwdriver Set	51
932	Torx Socket Set with Holder (Internal)	50
933	Master Torx Bit Set	50
934	52-Piece Torx Bit Set	50
935	4-Piece Mortorq Set with Storage Rail	51
941	Two-Jaw Pullers	25
942	Two-Jaw Pullers	25
944	Two-Jaw Pullers	25
946	Inner Tie Rod Removal Tool	43
947	Heavy-Duty Inner Tie Rod Wrench	43
951	Two & Three Jaw Combination Pullers	26
952	Two & Three Jaw Combination Pullers	26
953	Two & Three Jaw Combination Pullers	26
954	Two & Three Jaw Combination Pullers	26
956	9-Way Slide Hammer Puller Set	25
957	Adjustable Puller	26
966	8-Piece, 6-Point Axle Nut Socket Set	43
967	4-In-1 Swivel Oil Filter Wrench	30
976	8-Piece, 12-Point Metric Axle Nut Socket Set	44
977	Toyota Front Hub Nut Socket	44
980	Crank-Bolt Socket Set	15
987	Heavy-Duty Three-Legged Filter Wrench	33
988	Three-Legged Filter Wrench	33
989	Swivel Truck Filter Wrenches	31
991	Swivel Truck Filter Wrenches	31
993	Swivel Oil Filter Wrenches	30
994	Swivel Oil Filter Wrenches	30
995	Swivel Oil Filter Wrenches	30
996	Oil Filter Socket Set	33
999	Swivel Oil Filter Wrenches	30
1016	Snap Ring Pliers Set	49
7541	Subaru Hex Bit	17
16000	Radiator Hose Pinch Off Pliers	50

Part No.	Desc.	Page
16500	Heavy Duty Pinch Off Pliers	50
18510	Bolt Retained Bearing Cup Installer	27
20200	Magnetic Bearing Cup Installer	27
24700	One Person Brake Bleeder Tool	36
29200	Large and Small Filter Pliers Set	32
29900	Jumbo Filter Pliers	31
32300	Adjustable 2"-5" Cylinder Hone Deglazer	13
33000	Multi-Hone Set	36
36700	2-In-1 S-Cam Brake Tool	36
38000	Ratcheting Harmonic Balancer Puller	16
38100	Ford and Mazda Crankshaft Holder	16
38110	Ford Harmonic Balancer Holder	16
38200	4-Piece Oil Plug Remover	33
38400	Drain Plug Repair Kit	33
38500	Master Harmonic Balancer & Pulley Installer	15
38700	Long Reach Harmonic Balancer and Pulley Installer	15
38710	Ford® EcoBoost® Long Reach Harmonic Balancer Installer	15
38800	Harmonic Balancer Installer	16
38100	Ford and Mazda Crankshaft Holder	16
38110	Ford Harmonic Balancer Holder	16
38900	Two Valve Ford Triton Spark Plug Thread Repair Kit	17
39100	Ford Triton Spark Plug Extractor	17
39200	Ford Triton Spark Plug Porcelain Extractor	17
39300	Three Valve Ford Triton Insert Kit	18
39500	Ford Triton Broken Spark Plug and Electrode Removal Set	18
48100	Master Ratchet Accessory Set	48
49500	Body Dent & Seal Puller	28
49600	Seal Puller	29
49700	14-Piece Light-Duty Slide Hammer and Puller Set	26
52600	Scraper Set	58
55000	11-Piece Deutsch Terminal Service Kit	21
55004	Open Barrel Crimping Pliers	21
55005	Terminal Crimping Pliers	21
55100	6-Piece Deutsch Terminal Service Kit	21
75510	16-Piece Master Wheel Locking Nut Key Set	45
75902	Tube Bend Mirror Adaptors	40
82700	Metric Bubble Flaring Kit	38
82800	SAE Tube Flaring Kit	38
82900	SAE and Metric Tube Flaring Kit	39
90200	Master Spring Compressor Set	41

90620	Finger Bit Driver Merchandisers	46
90630	Finger Bit Driver Merchandisers	46
90700	2-in-1 Dodge and Ford Hub Removal Tool	44
90701	Dodge Hub Removal Tool	44
90702	Ford Hub Remover Adapter	45
90703	Dodge Hub Nut Socket	44
91000	Coil Spring Clamps	41
91300	Floor-Mounted, 2,200 lbs. Spring Compressor	40
91800	Rear Axle Bearing Puller Set	29
94800	Hub Puller	45
95200	In-Line Dowel Pin Puller Set	29
95300	In-Line Dowel Pin Puller Set	29
95400	In-Line Dowel Pin Puller Set	29
95500	SAE Stud Extractor Set	29
95550	SAE Stud Extractor Set	29
95600	SAE Stud Removal and Installation Set	30
95700	Metric Stud Removal and Installation Set	30