



**(en) Attachment -
Operator's Manual
1696891 Cultivator - 82V Attachment**

Manual Contents:

- General Information 2
- Operator Safety 2
- Parts and Features 4
- Operation 4
- Storage 4
- Maintenance 5
- Troubleshooting 5
- Parts List 6

General Information

The illustrations in this document are representative. The unit may vary from the images displayed. **LEFT** and **RIGHT** are referenced from the operator's position.

The use of Note in the text indicates clarifications, exceptions, or alternatives to the procedures given.




All language translations of this document are derived from the original English source file.




Operator Safety

Save these instructions for future reference. This manual contains safety information to make you aware of the hazards and risks associated with the product and how to avoid them. It also contains important instructions that should be followed during the initial set-up, operation, and maintenance of the product.

It is important that you read and understand these instructions before attempting to start or operate this equipment.

Safety Alert Symbols and Signal Words









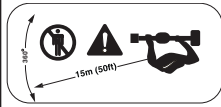
The safety alert symbol  identifies safety information about hazards that can result in personal injury. A signal word (DANGER, WARNING, or CAUTION) is used with the alert symbol to indicate the likelihood and the potential severity of injury. In addition, a hazard symbol may be used to represent the type of hazard.

-  **DANGER** indicates a hazard which, if not avoided, will result in death or serious injury.
-  **WARNING** indicates a hazard which, if not avoided, could result in death or serious injury.
-  **CAUTION** indicates a hazard which, if not avoided, could result in minor or moderate injury.

NOTICE indicates an action that could result in damage to the product.

WARNING

This product can expose you to chemicals including lead and lead compounds, which are known to the State of California to cause cancer and birth defects or other reproductive harm.

Symbol	Meaning
	Safety information about hazards that can result in personal injury.
	Read the directions for use of cultivator before operating the machine.
	High voltage hazard. Risk of electrocution could cause severe injury or death.
	Thrown objects hazard - Wear eye protection. Noise hazard - Wear ear protection.
	Wear safety gloves and boots.
	Protect the machine from rain and damp environments.
	Cutting hazard from rotating tines - Keep hands and feet away from the tines.
	Thrown objects hazard - The cultivator can throw objects.
	All bystanders must be kept at least 50 ft (15m) away from machine.

Safety and Handling



WARNING



Do not operate the cultivator attachment before reading all Safety and Handling sections.

- Stay alert. Watch what you are doing when operating a power tool. Do not operate the cultivator under the influence of alcohol, drugs or medication or when you are tired or sick.
- Do not operate the cultivator for any other purpose except that for which it is intended.
- Use only manufacturer's genuine recommended replacement parts and accessories.

Before using the cultivator

- The operation of any power tool can result in foreign objects being thrown into your eyes, which can result in severe eye damage. Always wear safety glasses with side shield and a helmet. Always wear nonslip safety shoes, ear muffs and gloves.
- Know the cultivator controls and learn how to stop operating the unit quickly in an emergency by releasing the "ON / OFF" switch.
- Before using the cultivator, make sure that the blade assembly is not worn or damaged.
- Dress properly. Do not wear loose clothing or jewelry or long hair which can be caught in moving parts.
- Do not operate power tools in explosive atmospheres, such as in the presence of flammable liquids, gases or dust. Power tools can create sparks which may ignite the dust or fumes.
- Operate only in daylight or good artificial light. Never operate in bad weather, especially when there is a risk of lightning.
- Keep your work area clean and well lit.



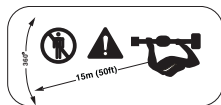
WARNING



- Maintain 50 ft (15 m) between the unit and any electrical line to reduce the risk of electrocution.
- Electricity can jump from one pole to another by arching. Higher voltage increases the distance that causes electricity to arc.



WARNING



Bystanders must be kept at least 50 ft (15 m) away from cultivator during operation.

- Stop the machine immediately if approached.
- Be careful when turning or swinging the unit.
- Look before turning or changing direction.

Operating the cultivator

- Walk with the cultivator. Never run.
- To maintain full control of the cultivator, keep a proper footing at all times with your weight evenly balanced over both feet and never over reach. Use both hands when operating the cultivator.
- Always keep the handle dry and free from oil and grease.
- Always make sure the camlock is secure before operating the cultivator.
- Do not force the cultivator. Always use the correct tool for your application.
- Do not use the cultivator if the switch does not turn it ON and OFF.
- Store idle power tools out of the reach of children. Do not allow persons unfamiliar with the power tool or these instructions to operate the power tool.



WARNING



- Keep all body parts, especially hands away from moving parts when the cultivator is running.
- Always stop the cultivator and remove the battery if the following conditions apply:
 - before clearing any blockage.
 - before assembling, checking, cleaning or working on the unit.
 - whenever leaving the cultivator unattended.
 - If the unit becomes jammed.



WARNING



This tool is capable of throwing objects that could result in serious injury.

- Inspect the work area and remove stones, pieces of metal or other objects that could be thrown.

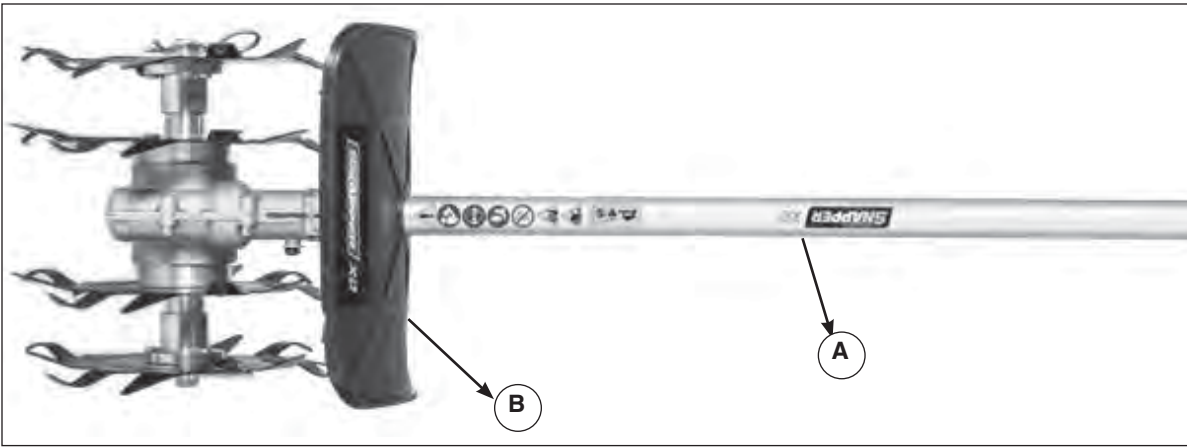


Figure 1

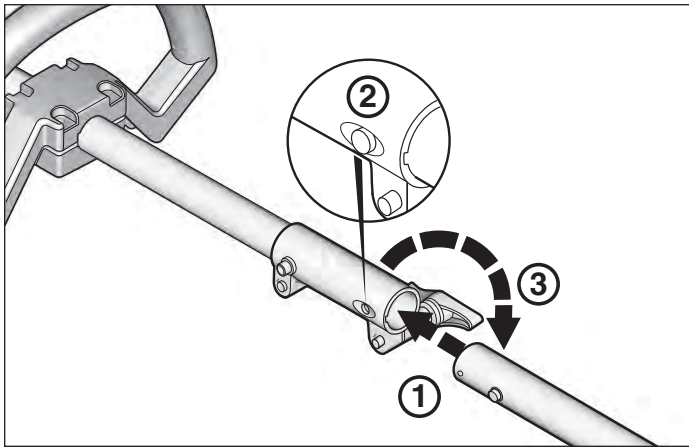


Figure 2

Parts and Features

- Ⓐ Cultivator attachment
- Ⓑ Tine cover

Operation

- ① Insert cultivator pole into pole on power head.
- ② Press button on pole to allow power head pole to lock into place.
- ③ Tighten knob on power head pole.

Storage

When transporting or storing the cultivator, always remove the battery. Proper handling of the cultivator will reduce the risk of personal injury from the tines.

Maintenance

Periodically check the cultivator for misalignment, binding of moving parts, breakage of parts and any other condition that may affect the cultivator operation. If damaged, have the unit repaired before use.

Keep cutting tools sharp and clean. Properly maintained cutting tools with sharp cutting edges are less likely to bind and are easier to control.

All maintenance, repair and inspection work should be performed by an authorized service center.

Maintenance Chart

Refer to the following table for routine maintenance.

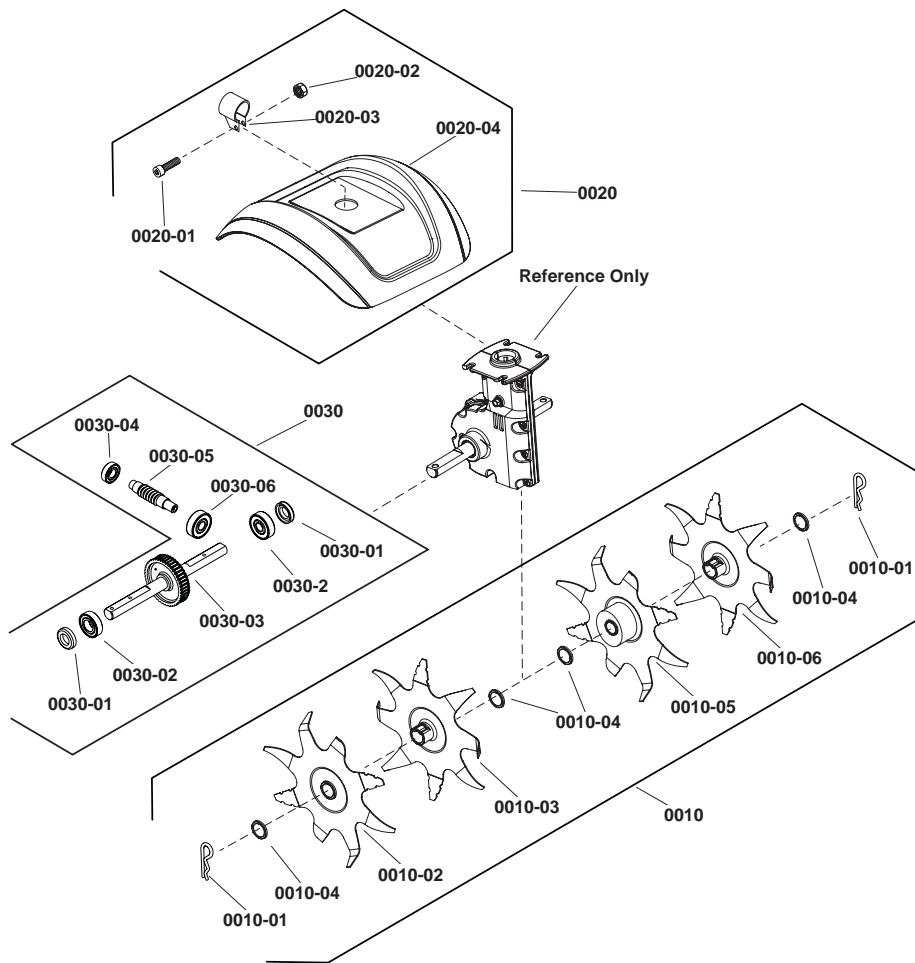
Requirements	Actions	Before start	After finish
Cutting System	Visual inspection	•	•
	Inspect and check assembly	•	
All accessible fasteners	Check	•	
	Retighten	•	•

Troubleshooting

The following chart lists problems, causes and corrective actions if your cultivator does not operate properly. If these do not correct the problem, contact an authorized service center.

Problem	Possible Cause	Correction
Motor runs but blades remain stationary	Drive cables not engaged.	Disconnect the poles; make sure the drive cables engage as poles are connected.
Cutting tool too hot	Dull cutting blades.	Replace the blade assembly.
Excessive vibration	Loose fasteners.	Tighten fasteners.

Exploded View



Parts List

ITEM NO.	PART NO.	DESCRIPTION	QTY
0010	771074	KIT, BLADE	1
0010-01	----	PIN	2
0010-02	----	GEAR, LEFT A	1
0010-03	----	GEAR, LEFT B	1
0010-04	----	WASHER	4
0010-05	----	GEAR, Right C	1
0010-06	----	GEAR, Right D	1
0020	771075	KIT, SPLASH GUARD	1
0020-01	----	SCREW, M6*30	1
0020-02	----	NUT, M6	1
0020-03	----	CLAMP	1
0020-04	----	GUARD, SPLASH	1
0030	84003806	GEAR ASSEMBLY	1
0030-01	----	SEAL, OIL	2
0030-02	----	BEARING	2
0030-03	----	SHAFT & GEAR	1
0030-04	----	BEARING	1
0030-05	----	GEAR, WORM	1
0030-06	----	BEARING	1