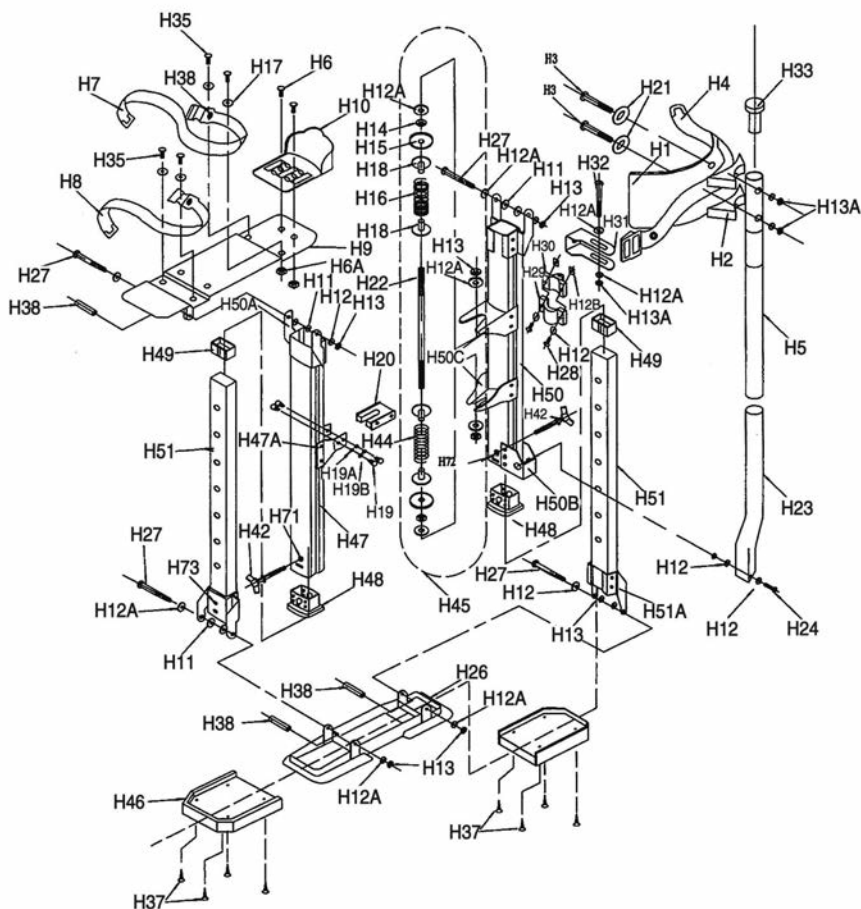


#15-352/#15-353/#15-354

High Reach Stilts



Ref #	Key #	Description	Qty/Unit	Ref #	Key #	Description	Qty/Unit	Ref #	Key #	Description	Qty/Unit
15-352	H1	Leg Band With Pads (H21, sponge)		15-352	H28	1/4" -20" 1 9/16" Half-threaded Cap Screw		15-352	H74	Middle Rivets	
15-352	H2	Leg Band Spacer		15-352	H26	1/4" -20" 1 1/2" Threaded Cap Screw With Lock Nut		15-352	H75	Short Rivets	
15-352	H3	1/4" -20*2 1/16" Flat Bead Machine Screw w/Lock Nut		15-352	H32	1/4" -20" 1 9/16" Half-threaded Cap Screw w/Lock Nut		15-352	H45	Entire Spring Assembly (One Stilts) Includes H12, H13, H14, H15, H16, H18, H22, H44	
15-352	H4	Leg Strap w/Bundle		15-352	H24A	1/4" -20" 1/2" Threaded Cap Screw With Lock Nut		15-352	H50-15L	Inter-Lock Rear Outward Leg Extension (only for SH-1523) Left Side. Includes H47-1523, H50A, H50B, H50C, H71, H72, H74, H75	
15-352	H5	1 1/8" Upper Strut Tube (only for SH1523)		15-352	H26	Nylon Floor Plate		15-352	H50-18L	Inter-Lock Rear Outward Leg Extension (only for SH-1830)Left Side Includes H47-1830, H50A, H50B, H50C, H71, H72, H74, H75	
15-352	H5	1 1/8" Upper Strut Tube (only for SH1830)		15-352	H27	1/4" -20*3 1/8" Cap Screw		15-352	H50-24L	Inter-Lock Rear Outward Leg Extensions (only for SH-2440) Left Side includes H47-2440, H50A, H50B, H50C, H71, H72, H74, H75	
15-352	H5	1 1/8" Upper Strut Tube (only for SH2440)		15-352	H27A	1/4" -20*3" Cap Screw		15-352	H50-15R	Inter-Lock Rear Outward Leg Extension (only for SH-1523) Right Side includes H47-1523, H50A, H50B, H50C, H71, H72, H74, H75	
15-352	H6	No. 10-24*1/2" Machine Screw w/Nut		15-352	H29/H30	Round -Lock Tube Clamp (L) / (R)		15-352	H50-18R	Inter-Lock Rear Outward Leg Extension (only for SH-1830) Right Side includes H47-1830, H50A, H50B, H50C, H71, H72, H74, H75	
15-352	H6A	1/4" - 20*3/16" Nylon Lock Nut		15-352	H31	Metal Clamp Bracket(2mm Thickness)		15-352	H50-18R	Inter-Lock Rear Outward Leg Extension (only for SH-1830) Right Side includes H47-1830, H50A, H50B, H50C, H71, H72, H74, H75	
15-352	H7	Arch Strap (long) with Self Locking Buckle		15-352	H33	Upper Strut Tube Cap Plug		15-352	H50-24R	Inter-Lock Rear Outward Leg Extension (only for SH-2440) Right Side H72, H74, H75, H47-2440	
15-352	H8	Toe Strap (short) with Self Locking Buckle		15-352	H35	Strap Mounting Screw		15-352	H50-15F	Inter-Lock Front Outward Leg Extension (only of SH-1523) Includes H47-1523, H47A, H50A, H71, H72, H74	
15-352	H9	Nylon Foot Plate		15-352	H36	Strap Washer		15-352	H50-18F	Inter-Lock Front Outward Leg Extension (only for SH-1830) Includes H47-1830, H47A, H50A, H71, H72, H74	
15-352	H10	Adjustable Heel Bracket		15-352	H37	Sole Mounting Screw		15-352	H50-24F	Inter-Lock Front Outward Leg Extension (only for SH-2440) Includes H47-2440, H47A, H50A, H71, H72, H74	
15-352	H11	Nylon Leg Bearing		15-352	H38	Strap Mounting Nylon Sleeve		15-352	H51-15I	Inner Leg Extension Tube (only for SH 1523) Includes H51-1523, H51A, H73	
15-352	H12	1/4" Flat Washer		15-352	H42	1/4" -20*1 9/16" Wing Bolt With Lock Washer		15-352	H51-18I	Inner Leg Extension Tube (only for SH 1830) Includes H51-1830, H51A, H73	
15-352	H12A	1/4" Flat Wider Washer		15-352	H44	Lower Coil Spring (Zinc Plated)		15-352	H51-24I	Inner Leg Extension Tube (only for SH-2440) Includes H51-2440, H51A, H73	
15-352	H12B	1/4" - 20 Square Nut		15-352	H46	Replaceable Sole With Screws (for Nylon Floor Plates)					
15-352	H13	1/4" - 20" H8 Nylon Lock Nut		15-352	H47	Forward Adjustable Leg Extrusion (only for SH 1523)					
15-352	H13A	1/4" - 20*H5 Nylon Lock Nut		15-352	H47	Forward Adjustable Leg Extrusion (only for SH 1830)					
15-352	H14	1/4"-20*H5 Hex Nut		15-352	H47	Forward Adjustable Leg Extrusion (only for SH 2440)					
15-352	H15	Spring Adjuster		15-352	H47A	Center Spring Assembly Bracket					
15-352	H16	Upper Coil Spring (Dark brown)		15-352	H48	Downward Huge Nylon Sleeve					
15-352	H17	3/4" *7/23" Strap Mounting Metal Plate		15-352	H49	Upward Small Nylon Sleeve					
15-352	H18	Nylon Spring Bearing		15-352	H50A	Upper Foot Pad Attachment Bracket					
15-352	H19	3/8" Self Threading Screw		15-352	H50B	Inter-Lock Bracket					
15-352	H19A	3/16" Flat Washer		15-352	H50C	Upper & Lower Spring Assembly Bracket					
15-352	H19B	3/16" Lock Washer		15-352	H51	Inner Leg Tube (only for SH 1523)					
15-352	H20	Spring Divider		15-352	H51-1830	Inner Extension Tube (only for SH 1830)					
15-352	H21	1- 3/16" 5/16" Large Leg Band With Pads Washer		15-352	H51-2440	Inner Extension Tube (only for SH 2440)					
15-352	H22	1/4"-20" 8" Stud Threaded At Both Ends		15-352	H51A	Lower Foot Pad Attachment Bracket					
15-352	H23	Inter-Lock 1" O.D. Lower Strut Tube (only for SH 1523)		15-352	H71	Wing Bolt Unthreaded Rivet Nut Guide (O/S Pan #45&50)					
15-352	H23	Inter-Lock 1" O.D. Lower Strut Tube (only for SH 1830)		15-352	H72	Wing Bolt Threaded Rivet Nut (I/S Part #47&50)					
15-352	H23	Inter-Lock 1" O.D. Lower Strut Tube (only for SH 2440)		15-352	H73	Long Rivets					
15-352	H24	1/4" -20" 1 9/16" Half-threaded Cap Screw w/Lock Nut									

Order by Reference # and Key #