

# Bon<sup>®</sup> Advantage

## POWER TROWEL BLADES

- ▶ Plastic brush caps for thread protection
- ▶ Specially formulated hardened and tempered spring steel
- ▶ Mounting bracket is secured to the blade using a 6 rivet design for maximum strength to prevent separation
- ▶ High carbon content provides abrasion resistance
- ▶ Mounting hardware is included with each package of blades



Multi-sizes available.  
Sold in packages of 4

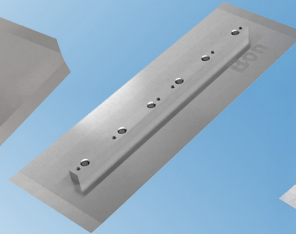
For use on 30"/36"/46"/48" Power Trowels



COMBINATION



FLOAT SHOE



FINISH



FLAT FINISH



	Bon <sup>®</sup>	The Other Guy
6 rivet design	✓	
Abrasion resistant steel	✓	
Mounting hardware included	✓	
Thread protectors	✓	

*The Competition Doesn't Stack Up!*  
**EXPERIENCE THE BON<sup>®</sup> ADVANTAGE ON YOUR NEXT ORDER**

## Power Trowel Blades

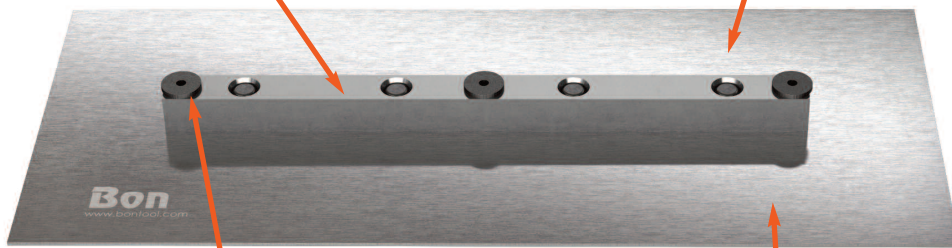
Bon's Power Trowel Blades are specially formulated hardened and tempered spring steel. High carbon content provides abrasion resistance for longer wear.

### THESE BLADES FIT MOST OF THE FOLLOWING BRANDS OF POWER TROWEL MACHINES:

**Allen Razorback • Bartell • Champion • Corbit Northrop  
Husqvarna • MBW • Morrison • Stone • Stow • Wacker  
Whiteman/Multi Quip**

Mounting bracket is secured to blade using a 6 rivet design for maximum strength to prevent separation

Specially formulated hardened and tempered spring steel



Plastic brush caps for thread protection

High carbon content provides abrasion resistance for longer wear



### SPECIFICATIONS:

All blades sold in 4/pkg.

#### Finish Blades

#17-151 11" x 6" (for 30" Power Trowels)  
#17-154 14" x 6" (for 36" Power Trowels)  
#17-158 18" x 6" (for 46" & 48" Power Trowels)

#### Flat Finish Blades

#17-155 14" x 6" (for 36" Power Trowels)  
#17-159 18" x 6" (for 46" & 48" Power Trowels)

#### Combination Blades

#17-152 11" x 8" (for 30" Power Trowels)  
#17-156 14" x 8" (for 36" Power Trowels)  
#17-160 18" x 8" (for 46" & 48" Power Trowels)

#### Float Shoe Blades

#17-153 11" x 10" (for 30" Power Trowels)  
#17-157 14" x 10" (for 36" Power Trowels)  
#17-161 18" x 10" (for 46" & 48" Power Trowels)

#### Hole Spacing Detail for Bon Power Trowel Blades

