

## TECHNICAL DATA

We provide three types of stilts for you to choose according to your physical conditions and working environment.  
Load Limitation: 230 lbs.

**Please read carefully before assembly and use. It is crucial for your product satisfaction and personal safety.**

## ASSEMBLY

1. Loosen the tube clamps (HD29/30).



2. Insert lower strut tubes (H23) up through the bottom of the tube clamps.



3. Attach lower strut tubes (H50B) to the inter-lock bracket.



4. Connection with attachment cap screw (H24) & nylon lock nut (H13A). Tighten well when assembly is complete.



5. Slide the upper strut tubes (H5) down over the lower strut tubes and through the tube clamps. Position so the leg bands (H4) are just above the large portion of the leg calves.



6. Position the tube clamps in the clamp bracket slots, according to your calf size, so the stilts will stand straight when mounted, and tighten them well.



## Height Adjustment:

Position the side pole holder in the side pole bracket slots (H51) according to your calf size, so that the stilts will stand straight when mounted. Remove wing bolts (H42). Evenly raise the stilt legs (H47) to the desired height, align the wing blowholes in the legs and extension tubes, install wing bolts, and tighten well.

## OPERATING CAUTIONS

### Strap Tightening Sequence:

1. The six holes in the heel bracket (H10) that attached on the footplate (H9) are used to adjust the distance between the footplate and the heel bracket.
2. When wearing, buckle leg straps first, and then buckle arch and toe straps.
3. Then bind the toe straps (H7/8). When dismantling, unbuckle arch and toe straps first, and then unbuckle leg straps.



### Forward Rearward Balance:

1. If stilts lean forward, loosen the tube clamps and rotate the leg bands and strut tubes toward the rear, and tighten clamps to ensure proper balance. Balance of stilts is controlled by its midst part of entire spring assembly (H45). Do not bend or "size" leg bands.
2. If your body leans forward when you are using the stilts, adjust the spring adjuster (H15) on the lower coil spring (H44).
3. If your body leans backward, adjust the spring adjuster on the upper coil spring (H16).



4. The clamp brackets (H31) beside the tube clamps are used to keep the balance of the stilts.



## INSPECT BEFORE WORKING

Make certain the entire stilts are free of any sign of damage or excessive wear, and that all nuts and bolts are tight. Special attention should be given to the entire strut tube assemblies and wing bolts in this respect.

Make certain that each step completely clears the floor, as you must never drag or shuffle your feet. Don't work in or around loose wire, rope, electric cords, paper sacks, broken glass, conduit, etc.

## CAUTION

- Don't wear stilts without having proper instruction on the use of them.
- Do not wear stilts that have excessively damaged, worn or modified parts.
- Don't walk on oily or otherwise slippery surfaces.
- Don't wear on sandy, rocky, uneven, muddy or excessively soft terrain.
- Don't work in or around loose wire, rope, electric cords, paper sacks, broken glass, conduit, etc.
- Don't walk on secondary scaffolding, benches, planks, stools, etc.
- Don't carry heavy loads while walking on stilts.
- Don't run or walk fast on stilts.
- Don't wear stilts that are taller than necessary.
- Don't wear stilts while under the influence of alcohol.

## NOTICE

- Inspect stilts thoroughly before use, making sure that the structure is free of any signs of damage, and there is no excessive wear at the connection points.
- Replace any damaged or excessively worn stilt components before use.
- Keep all straps tightly fastened and secured.
- Fasten the upper leg strap first when putting on stilts.
- Remove anything from the soles which could cause loss of traction.
- Walk only on a suitable hard surface or level terrain.
- Cover or guard floor openings, stairwells, etc.
- Walk forward only, making a "U" turn to reverse your direction.
- Remove stilts when climbing or descending stairs.
- Receive assistance when picking up objects from the floor.

## MAINTENANCE

**Do inspect stilts thoroughly before use making sure that the structure is free of any sign of damage, and there is no excessive wear at the connection points.**

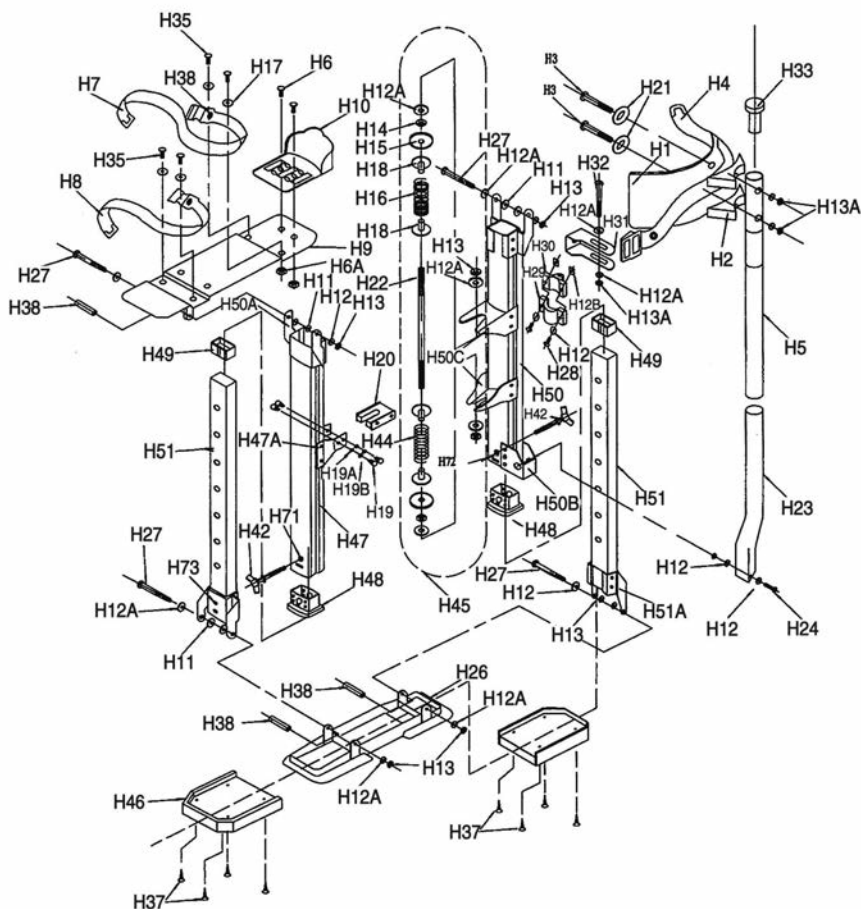
Regularly maintain the stilts by:

Lubricating the "action" spring components lightly. Check if replacement is needed of any of these wear components: nylon sleeves, wing bolts, and arch straps.

All components are replaceable. Determine the stilts type and refer to the parts list.

# #15-352/#15-353/#15-354

# High Reach Stilts



Ref #	Key #	Description	Qty/Unit	Ref #	Key #	Description	Qty/Unit	Ref #	Key #	Description	Qty/Unit
15-352	H1	Leg Band With Pads (H21, sponge)		15-352	H28	1/4" -20" 1 9/16" Half-threaded Cap Screw		15-352	H74	Middle Rivets	
15-352	H2	Leg Band Spacer		15-352	H26	w/Lock Nut		15-352	H75	Short Rivets	
15-352	H3	1/4" -20*2 1/16" Flat Bead Machine Screw w/Lock Nut		15-352	H32	1/4" -20" 1 9/16" Half-threaded Cap Screw w/Lock Nut		15-352	H45	Entire Spring Assembly (One Stilts) Includes H12, H13, H14, H15, H16, H18, H22, H44	
15-352	H4	Leg Strap w/Bundle		15-352	H24A	1/4" -20" 1/2" Threaded Cap Screw With Lock Nut		15-352	H50-15L	Inter-Lock Rear Outward Leg Extension (only for SH-1523) Left Side. Includes H47-1523, H50A, H50B, H50C, H71, H72, H74, H75	
15-352	H5	1 1/8" Upper Strut Tube (only for SH1523)		15-352	H26	Nylon Floor Plate		15-352	H50-18L	Inter-Lock Rear Outward Leg Extension (only for SH-1830)Left Side Includes H47-1830, H50A, H50B, H50C, H71, H72, H74, H75	
15-352	H5	1 1/8" Upper Strut Tube (only for SH1830)		15-352	H27	1/4" -20*3 1/8" Cap Screw		15-352	H50-24L	Inter-Lock Rear Outward Leg Extensions (only for SH-2440) Left Side includes H47-2440, H50A, H50B, H50C, H71, H72, H74, H75	
15-352	H5	1 1/8" Upper Strut Tube (only for SH2440)		15-352	H27A	1/4" -20*3" Cap Screw		15-352	H50-15R	Inter-Lock Rear Outward Leg Extension (only for SH-1523) Right Side includes H47-1523, H50A, H50B, H50C, H71, H72, H74, H75	
15-352	H6	No. 10-24*1/2" Machine Screw w/Nut		15-352	H29/H30	Round -Lock Tube Clamp (L) / (R)		15-352	H50-18R	Inter-Lock Rear Outward Leg Extension (only for SH-1830) Right Side includes H47-1830, H50A, H50B, H50C, H71, H72, H74, H75	
15-352	H6A	1/4" - 20*3/16" Nylon Lock Nut		15-352	H31	Metal Clamp Bracket(2mm Thickness)		15-352	H50-24R	Inter-Lock Rear Outward Leg Extension (only for SH-2440) Right Side H72, H74, H75, H47-2440	
15-352	H7	Arch Strap (long) with Self Locking Buckle		15-352	H33	Upper Strut Tube Cap Plug		15-352	H50-15F	Inter-Lock Front Outward Leg Extension (only of SH-1523) Includes H47-1523, H47A, H50A, H71, H72, H74	
15-352	H8	Toe Strap (short) with Self Locking Buckle		15-352	H35	Strap Mounting Screw		15-352	H50-18F	Inter-Lock Front Outward Leg Extension (only for SH-1830) Includes H47-1830, H47A, H50A, H71, H72, H74	
15-352	H9	Nylon Foot Plate		15-352	H36	Strap Washer		15-352	H50-24F	Inter-Lock Front Outward Leg Extension (only for SH-2440) Includes H47-2440, H47A, H50A, H71, H72, H74	
15-352	H10	Adjustable Heel Bracket		15-352	H37	Sole Mounting Screw		15-352	H51-15I	Inner Leg Extension Tube (only for SH 1523) Includes H51-1523, H51A, H73	
15-352	H11	Nylon Leg Bearing		15-352	H38	Strap Mounting Nylon Sleeve		15-352	H51-18I	Inner Leg Extension Tube (only for SH 1830) Includes H51-1830, H51A, H73	
15-352	H12	1/4" Flat Washer		15-352	H42	1/4" -20*1 9/16" Wing Bolt With Lock Washer		15-352	H51-24I	Inner Leg Extension Tube (only for SH-2440) Includes H51-2440, H51A, H73	
15-352	H12A	1/4" Flat Wider Washer		15-352	H44	Lower Coil Spring (Zinc Plated)					
15-352	H12B	1/4" - 20 Square Nut		15-352	H46	Replaceable Sole With Screws (for Nylon Floor Plates)					
15-352	H13	1/4" - 20" H8 Nylon Lock Nut		15-352	H47	Forward Adjustable Leg Extrusion (only for SH 1523)					
15-352	H13A	1/4" - 20*H5 Nylon Lock Nut		15-352	H47	Forward Adjustable Leg Extrusion (only for SH 1830)					
15-352	H14	1/4"-20*H5 Hex Nut		15-352	H47	Forward Adjustable Leg Extrusion (only for SH 2440)					
15-352	H15	Spring Adjuster		15-352	H47A	Center Spring Assembly Bracket					
15-352	H16	Upper Coil Spring (Dark brown)		15-352	H48	Downward Huge Nylon Sleeve					
15-352	H17	3/4" *7/23" Strap Mounting Metal Plate		15-352	H49	Upward Small Nylon Sleeve					
15-352	H18	Nylon Spring Bearing		15-352	H50A	Upper Foot Pad Attachment Bracket					
15-352	H19	3/8" Self Threading Screw		15-352	H50B	Inter-Lock Bracket					
15-352	H19A	3/16" Flat Washer		15-352	H50C	Upper & Lower Spring Assembly Bracket					
15-352	H19B	3/16" Lock Washer		15-352	H51	Inner Leg Tube (only for SH 1523)					
15-352	H20	Spring Divider		15-352	H51-1830	Inner Extension Tube (only for SH 1830)					
15-352	H21	1- 3/16" 5/16" Large Leg Band With Pads Washer		15-352	H51-2440	Inner Extension Tube (only for SH 2440)					
15-352	H22	1/4"-20" 8" Stud Threaded At Both Ends		15-352	H51A	Lower Foot Pad Attachment Bracket					
15-352	H23	Inter-Lock 1" O.D. Lower Strut Tube (only for SH 1523)		15-352	H71	Wing Bolt Unthreaded Rivet Nut Guide (O/S Pan #45&50)					
15-352	H23	Inter-Lock 1" O.D. Lower Strut Tube (only for SH 1830)		15-352	H72	Wing Bolt Threaded Rivet Nut (I/S Part #47&50)					
15-352	H23	Inter-Lock 1" O.D. Lower Strut Tube (only for SH 2440)		15-352	H73	Long Rivets					
15-352	H24	1/4" -20" 1 9/16" Half-threaded Cap Screw w/Lock Nut									

When it comes to quality ladders, platforms scaffolding, Bon Pro Plus is the brand you can depend on.