

INSTRUCTIONS

#13-172, #13-176, #13-191
Spray Guns

SPRAYING OPERATION

Mix desired spraying material and pour into the hopper. Connect the air line to the hose connector. When the air inlet valve is in the open position, air will flow from the nozzle of the gun. When the gun trigger is pulled, material will mix with the air flow and exit through the nozzle. When spraying is completed, either turn off the compressor unit or close the air inlet valve to keep residual material in the gun from being sprayed.

IMPORTANT POINTS FOR THE SPRAYING OPERATION:

Material Consistency - For proper consistency of material, always follow manufacturer's mixing instructions. Material must be mixed to a pourable consistency to be used in the gun and hopper or an irregular spraying pattern will result.

Air Requirement - A required compressor unit rating of 6.2 CFM free air at 25 PSI is necessary for proper operation of the gun unit. Bon's Portable Texture Unit #13-481 meets this required rating by using a continuous free air supply to the gun.



SELECTING A PATTERN

Size of the Nozzle Opening - This spray gun comes with three different sizes of nozzles: 4mm, 6mm, and 8mm. To change the nozzle, loosen the retaining ring and pull trigger back. Replace with desired nozzle and tighten retaining ring. The larger the nozzle, the more material will flow through the tip of the gun and the coarser the pattern will be.

Air Flow - The amount of air that reaches the gun is controlled by the relief valve located at the front of the compressor. When the valve is tightened all the way down, the compressor will deliver maximum air to the gun. When the relief valve is backed off, air will bleed off through the relief valve and thus decrease the amount of air that will reach the gun. The more air supplied to the gun, the finer the pattern. A splatter texture would be achieved at about 5-10 PSI. (Note: Any changes to the air inlet valve on the gun will change the pattern).

Note: Always conduct a spray test area by experimenting with different textures before starting your project.



MAINTENANCE

Clean Up of Your Gun and Hopper - It is not necessary to completely disassemble the gun after each spraying operation. It is advisable to remove the gun from the hopper so that the bowl in the gun can be easily flushed. After cleaning the gun, lubricate the front and rear bushing by placing a few drops of oil on the air stem. This will help to eliminate trigger problems.

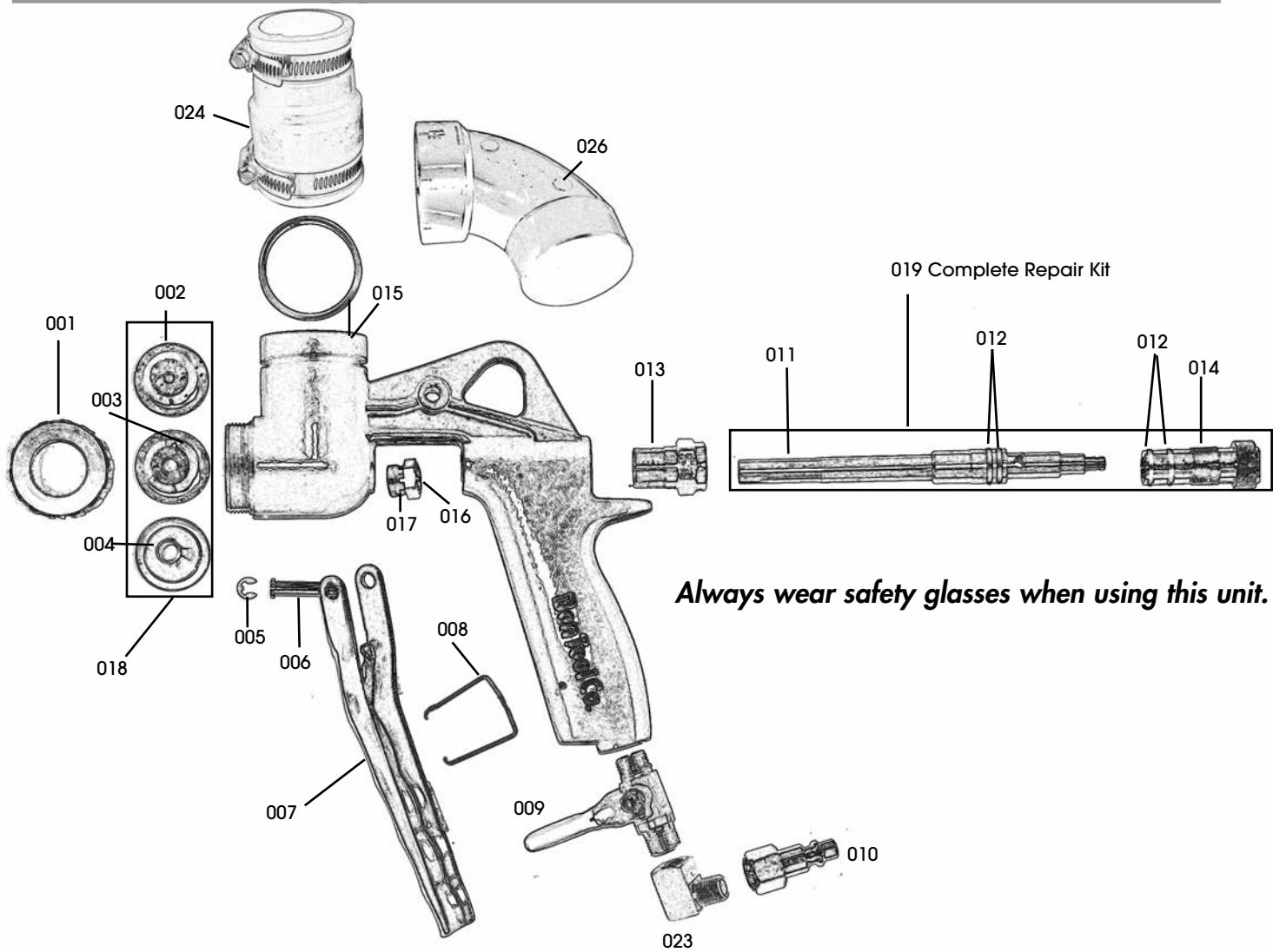
SAFETY

ALWAYS WEAR EYE PROTECTION WHEN USING SPRAY GUN UNITS.



#13-172 / #13-176 / #13-191

Bon Gun & Hoppers



Always wear safety glasses when using this unit.

Parts List

Part #	Key #	Detail	Qty/Unit	Part #	Key #	Detail	Qty/Unit
50-710	001	Retaining Ring	1	50-723	014	Control Knob Assembly	1
50-711	002	4mm Nozzle Fluid	1	50-724	015	O-Ring	1
50-712	003	6mm Nozzle Fluid	1	50-725	016	Bushing Nut	1
50-713	004	8mm Nozzle Fluid	1	50-726	017	O-Ring	1
50-714	005	E-ring	1	50-727	018	Repl. Nozzle set	1
50-715	006	Trigger Pin	1	13-111	019	Repair Kit (Complete as above)	1
50-716	007	Gun Trigger	1	50-729		Spray Gun Only	1
50-717	008	Trigger Latch	1	50-730*		Standard Hopper- Black	1
50-718	009	Air Inlet Valve	1	50-734*		Standard Hopper- White	1
50-719	010	Hose Connector	1	50-731*		Touch-Up Hopper - Black	1
50-720	011	Air Stem	1	50-732	023	Brass Elbow	1
50-721	012	O-Ring x 4	4	50-733	024	Rubber Coupler	1
50-722	013	Guide Nut	1	50-735	026	90° Plastic Elbow	1

* Only one hopper per unit