

COBRA

PANORAMIC PROTECTION

The essential best selling all rounder with a panoramic field of view! Wrap around and free from any visual interference the COBRA offers 180° panoramic vision and perfect optical quality. Available as a spectacle or a goggle.



COBRA ADVANTAGES

- ▶ SPECTACLE CONVERTS TO GOGGLE
- ▶ UPPER PROTECTION
- ▶ PANORAMIC VISION
- ▶ NON-SLIP BRIDGE
- ▶ COMFORTABLE, NON-SLIP PIVOTING TEMPLES
- ▶ OPTIONAL INTERCHANGEABLE FOAM AND STRAP

bolle
SAFETY

COBRA UNIVERSAL PROTECTION INFINITELY ADAPTABLE

The essential best selling all rounder with a panoramic field of view! Wrap around and free from any visual interference the COBRA offers 180° panoramic vision and perfect optical quality. Available as a spectacle or a goggle.



SPECIFICATIONS

VERSIONS	SKU	LENS MARKING	TEMPLE MARKING	COATINGS	UNIT	INNER PACK	MASTER PACK
Clear	40037	Z87+U6	Z87+Z94	Anti-scratch/Anti-fog	54917-27729-1	10	180
Smoke	40038	Z87+U6S	Z87+Z94	Anti-scratch/Anti-fog	54917-27730-7	10	180
Contrast	40041	Z87+U6	Z87+Z94	Anti-scratch/Anti-fog	54917-27733-8	10	180
ESP	40042	Z87+U6S	Z87+Z94	Anit-scratch outside/Anti-fog inside	54917-27734-5	10	180
HD	40040	Z87+U6	Z87+Z94	Hydrophobic/Anti-reflect/Anti-fog	54917-27732-1	10	180
Twilight	40112	Z87+U6S	Z87+Z94	Anti-scratch/Anti-fog	54917-27887-8	10	180
Strap and Foam Kit	40043	NA	NA	NA	54917-27735-2	20	240

CHARACTERISTICS

- Lens Material: Polycarbonate
- Lens Thickness: 2.2mm
- Frame Material: Polycarbonate/TPR
- Base Curve: 9
- Strap: 12mm adjustability
- Foam: Optional Foam + Strap Kit







ANSI
Z87.1-
2010

**American National
Standard for
Occupational and
Educational Eye and
Face Protection
Devices**

Establishes performance criteria and testing requirements for devices used to protect the eyes and face from injuries from impact, non-ionizing radiation and chemical exposure in workplaces and schools. It covers all types of protector configurations including spectacles (plano and prescription), goggles, face shields, welding helmets and full face-piece respirators.



Z87+

**Impact Mark Rated
Plano**

The Z87+ is required when claims of compliance such as impact rating or a specific lens type and/or use are made by the manufacturer for plano protectors



U (+
SCALE
NUMBER)

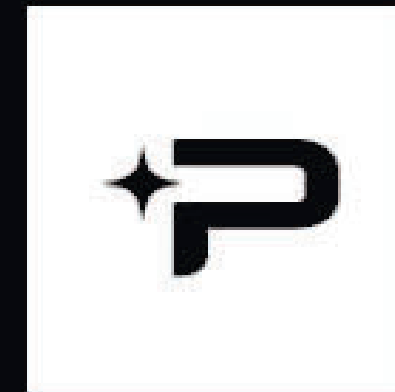
UV Filter

U and Scale Number (Scale ranges from 2 to 6 – the higher the number the highest protection from far and near UV)



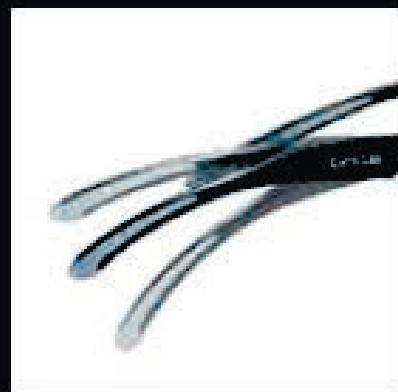
Clear Lens

Clear lens technology is approved for permanent wear and certified with perfect optical quality. Comes with Anti-scratch/Anti-fog (ASAF) coatings. Available in Platinum ASAF in select models.



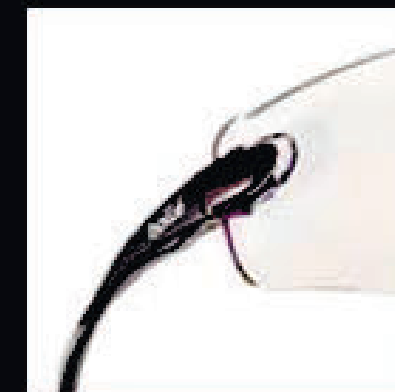
Platinum®

This proprietary, permanent coating applied on both lens surfaces, makes them highly scratch resistant to the most aggressive chemicals and effectively reduces the appearance of fogging longer than any other brand on the market.



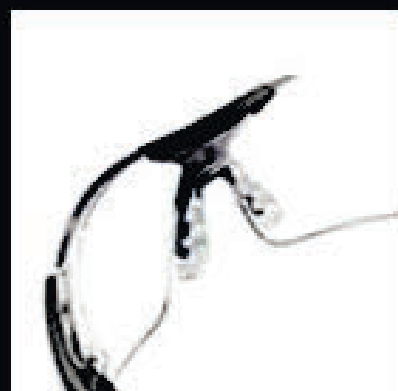
PIVOTING TEMPLES / TILTING FRONT

This technology is used to adapt the angle of the glasses to your face shape.



REMOVABLE TEMPLES

This technology is used to quickly and easily transform safety glasses into safety goggles. The temples can be replaced with the foam and strap kit.



NON-SLIP BRIDGE

Designed for a perfect fit of the frame on the face.

Pivoting temples



Non-slip bridge



[Learn more about sunglasses we have.](#)