

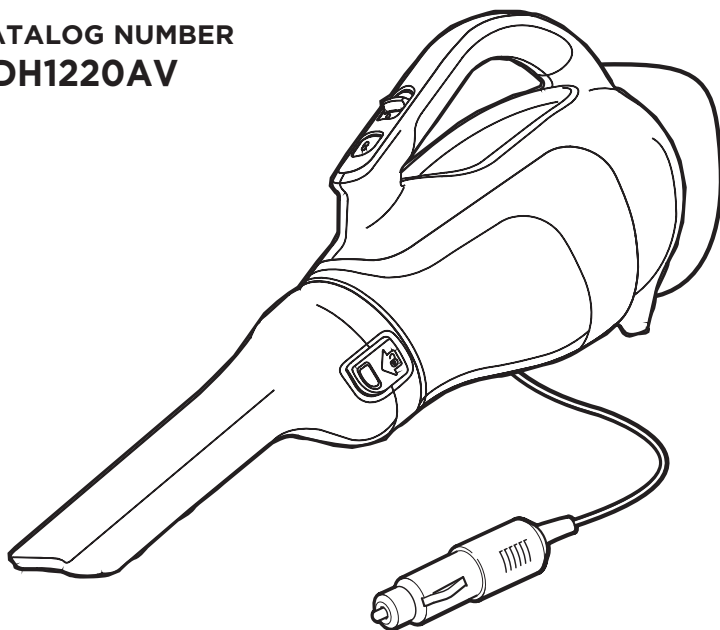
BLACK+ DECKER

TM

AUTO VAC

INSTRUCTION MANUAL

**CATALOG NUMBER
BDH1220AV**



Thank you for choosing BLACK+DECKER!

PLEASE READ BEFORE RETURNING THIS PRODUCT FOR ANY REASON.

SAVE THIS MANUAL FOR FUTURE REFERENCE.

SAFETY GUIDELINES - DEFINITIONS

It is important for you to read and understand this manual. The information it contains relates to protecting **YOUR SAFETY and PREVENTING PROBLEMS**. The symbols below are used to help you recognize this information.

⚠ DANGER: Indicates an imminently hazardous situation which, if not avoided, will result in death or serious injury.

⚠ WARNING: Indicates a potentially hazardous situation which, if not avoided, could result in death or serious injury.

⚠ CAUTION: Indicates a potentially hazardous situation which, if not avoided, may result in minor or moderate injury.

NOTICE: Used without the safety alert symbol indicates potentially hazardous situation which, if not avoided, may result in property damage.

IMPORTANT SAFETY INSTRUCTIONS

When using an electrical appliances, basic precautions should always be followed, including the following:

READ ALL INSTRUCTIONS BEFORE USING THIS APPLIANCE.

⚠ WARNING: Read all safety warnings and all instructions. Failure to follow the warnings and instructions listed below may result in electric shock, fire and/or serious injury.

⚠ WARNING: Some household dust contains chemicals known to the State of California to cause cancer, birth defects or other reproductive harm such as asbestos and lead in lead based paint.

⚠ WARNING: To reduce the risk of fire, electrical shock or injury:

⚠ WARNING: Do not use outdoors or on wet surfaces.

- Do not allow to be used as a toy. Close attention is necessary when used by or near children.
- Use only as described in this manual. Use only manufacturer's recommended attachments.
- Do not use with damaged cord or plug. If appliance is not working as it should, has been dropped, damaged, left outdoors, or dropped into water, return it to a service center.
- Do not pull or carry by cord, use cord as a handle, close a door on cord, or pull cord around sharp edges or corners. Do not run appliance over cord. Keep cord away from heated surfaces.
- Do not unplug by pulling on cord. To unplug, grasp the plug, not the cord.
- Do not handle plug with wet hands.
- Do not put any object into openings. Do not use with any opening blocked; keep free of dust, lint, hair, and anything that may reduce air flow.
- Keep hair, loose clothing, fingers, and all parts of body away from openings and moving parts.
- Use extra care when cleaning on stairs.
- Do not use to pick up flammable or combustible liquids, such as gasoline, or use in areas where they may be present.
- Do not pick up anything that is burning or smoking, such as cigarettes, matches, or hot ashes.
- Do not use without dust bag and/or filters in place.
- This appliance is intended for household use only and not for commercial or industrial use.
- Shock Hazard. To protect against risk of electrical shock, do not put unit in water or other liquid.
- Do not allow the cord to hang over the edge of a table or counter or touch hot surfaces. The unit should be placed or mounted away from sinks and hot surfaces.
- Plug the unit only in a standard automobile power outlet.
- Unplug the unit from outlet before any routine cleaning or maintenance.
- Do not look into the air vents when the unit is switched on, as sometimes there is a possibility of small debris being discharged from the air vents, especially after cleaning / replacement of the filters as debris inside the unit can be disturbed.

⚠ WARNING: Risk of Fire. Do not replace any vehicle fuse with a rating higher than recommended by the vehicle manufacturer. This product is rated to draw 10 amperes from a 12V vehicle outlet. Ensure that the electrical system in your vehicle can supply this product without causing the vehicle fusing to open. This can be determined by making sure the fuse in the vehicle which protects the outlet is rated higher than 10 amperes. Information on the vehicle fuse ratings are typically found in the vehicle operator's manual. If a vehicle fuse opens repeatedly, do not keep on replacing it. The cause of the overload must be found. On no account should fuses be patched up with tin foil or wire as this may cause serious damage elsewhere in the electrical circuit or cause fire.

SAVE THESE INSTRUCTIONS

Symbols

- The label on your tool may include the following symbols. The symbols and their definitions are as follows:

V.....volts

Hz.....hertz

minminutes

— or DC ..direct current

Ⓛ.....Class I Construction
(grounded)

Ⓜ.....Class II Construction
(double insulated)

📖Read instruction manual before use

🕶.....Use proper eye protection

A.....amperes

W.....watts

~ or AC.....alternating current

n_0no load speed

⊖.....earthing terminal

⚠.....safety alert symbol

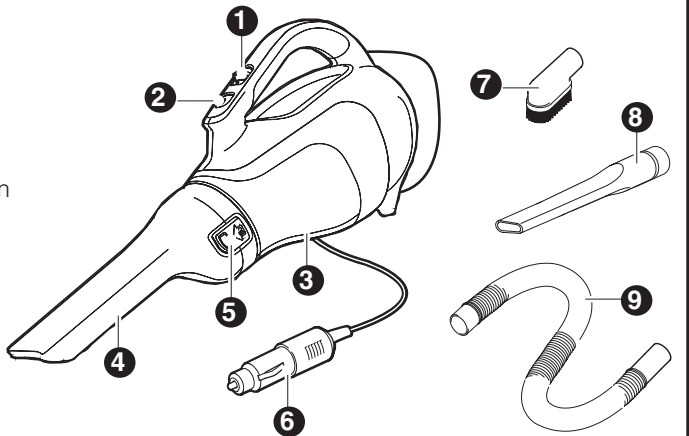
.../min or rpm...revolutions or reciprocation
per minute

🧴.....Use proper respiratory protection

👂.....Use proper hearing protection

Functional Description

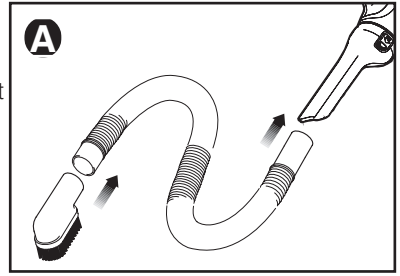
- On/off switch
- Bowl release button
- Dust bowl
- Nozzle
- Nozzle release button
- 12V car connector
- Large brush head
- Large crevice tool
- Flexible hose



Assembly

Attaching Accessories - Fig. A

- Fit the appropriate accessory (7 & 8) on the short end of the flexible hose (9).
- Make sure the accessory is fully attached.
- Fit the long end of the flexible hose into the nozzle (4).
- Make sure the flexible hose is fully in.



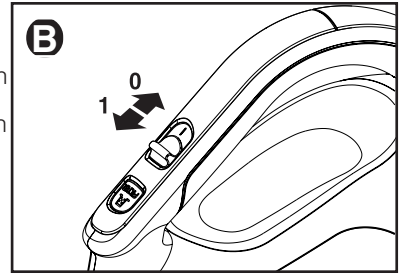
Operation

Connecting to the Vehicle's Power Supply

- Make sure the auto vac is switched off.
- Remove the cigarette lighter from its socket, if present.
- Plug the 12V car connector (6) into your car's cigarette lighter socket or power source.

Switching On and Off - Fig. B

- To switch the appliance on, slide the on/off switch (1) forward to position 1.
- To switch the appliance off, slide the on/off switch back to position 0.



Emptying and Cleaning

⚠ WARNING: Projectile/Respiratory Hazard:
Never use the auto vac without its filter.

⚠ WARNING: The filters are re-usable and should be cleaned regularly. Optimum dust collection will only be achieved with clean filters.

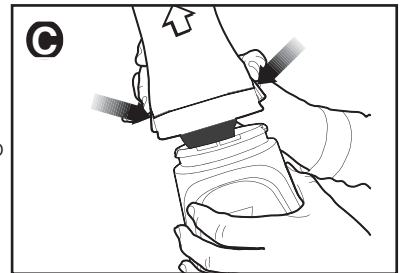
NOTICE: The filter is re-usable, do not throw it away when the product is emptied.

NOTICE: In order to keep the suction force optimized, the filters must be cleaned regularly during use.

- There are two methods of cleaning the bowl, a quick empty method and a thorough clean method.

Emptying the Dust Bowl - Fig C

- Press the nozzle release buttons (5) and pull the nozzle (4) straight off.
- Empty the contents of the bowl.
- To replace the nozzle, place it back onto the auto vac until it "clicks" firmly into position.



Removing Dust Bowl and Filters

NOTICE: Maximum dust collection will only be obtained with a clean filter and an empty dust bowl.

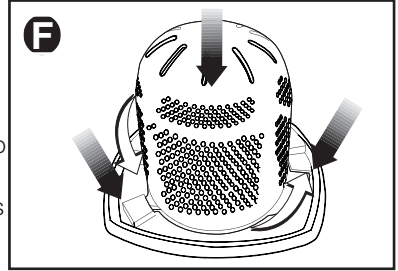
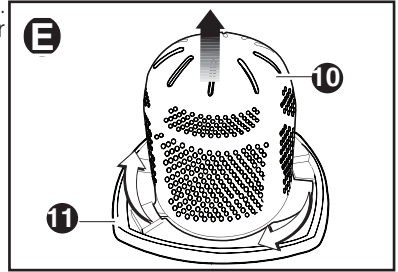
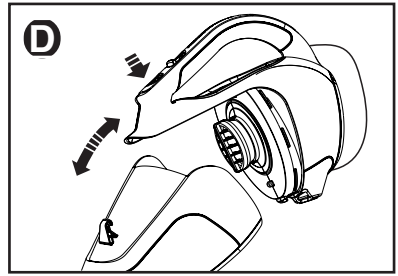
NOTICE: Empty dust bowl before it becomes overfilled. If dust begins to fall back out of the product after it is switched off, it is too full and requires emptying.

- Press the bowl release button (2) and pull the dust bowl (3) away from the body of the auto vac.
- While holding the dust bowl over a bin, pull the filter out to empty the contents of the bowl.

NOTICE: The auto vac has a pre-filter and an inner filter. The filters should be separated to allow better cleaning.

- To separate the filters, twist the pre-filter (10) in a clockwise direction and lift away from the inner filter (11) as shown in **Figure E**.
- Shake or lightly brush any loose dust off both filters.
- To replace the filters, slide the pre-filter over the inner filter.
- Align the wings of the pre-filter with the slots in the inner filter and twist in a counterclockwise direction as shown in **Figure F**.
- Place filters back into the bowl pressing firmly to ensure a secure fit. Place the dust bowl back onto the auto vac until it “clicks” firmly into position.

⚠ WARNING: It is very important that the filter is correctly in position before use.



Cleaning the Dust Bowls and Filters

NOTICE: Wash the filters regularly. The cleaner the filter is, the better the product will perform.

- Remove the dust bowl and filter as described in “Removing Dust Bowl and Filters.”
- The dust bowl and filters can be washed in warm soapy water.
- Allow to dry before placing back into the auto vac.
- Once clean and dry, place filters back into the bowl pressing firmly to ensure a secure fit. Place the dust bowl back onto the auto vac until it “clicks” firmly into position.

Replacing Filters

The filters should be replaced every 6 to 9 months depending on frequency of use, or when they are worn or damaged. Replacement filters (Catalog Number: VF110) are available from your BLACK+DECKER dealer.

- Remove the old filters as described above.
- Fit the new filters as described above.

Maintenance and Cleaning

Your BLACK+DECKER cordless appliance has been designed to operate over a long period of time with a minimum of maintenance. Continuous satisfactory operation depends upon proper appliance care and regular cleaning.

⚠ WARNING: Before performing any maintenance or cleaning on cordless appliances switch off and unplug the appliance.

- Clean your appliance using a soft damp cloth. Never let any liquid get inside the appliance; never immerse any part of the appliance into a liquid. **IMPORTANT:** To assure product SAFETY and RELIABILITY, repairs, maintenance and adjustment should be performed by authorized service centers or other qualified service organizations, always using identical replacement parts.
- For stubborn marks you can use a mild solution of soap and water to dampen your cloth.

Accessories

Recommended accessories for use with your appliance are available from your local dealer or authorized service center.

⚠ WARNING: The use of any accessory not recommended for use with this appliance could be hazardous.

Service Information

All BLACK+DECKER Service Centers are staffed with trained personnel to provide customers with efficient and reliable power tool service. Whether you need technical advice, repair, or genuine factory replacement parts, contact the BLACK+DECKER location nearest you.