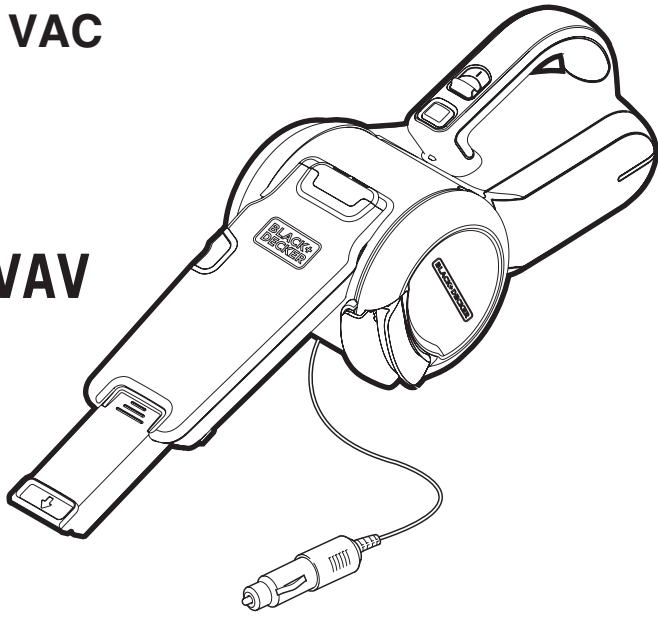


BLACK+DECKER

PIVOT AUTO VAC

Instruction manual

CATALOG NUMBER
BDH1200PVAV



Thank you for choosing BLACK+DECKER!

PLEASE READ BEFORE RETURNING THIS PRODUCT FOR ANY REASON.

SAFETY GUIDELINES - DEFINITIONS

It is important for you to read and understand this manual. The information it contains relates to protecting YOUR SAFETY and PREVENTING PROBLEMS. The symbols below are used to help you recognize this information.

⚠ DANGER: Indicates an imminently hazardous situation which, if not avoided, will result in death or serious injury.

⚠ WARNING: Indicates a potentially hazardous situation which, if not avoided, could result in death or serious injury.

⚠ CAUTION: Indicates a potentially hazardous situation which, if not avoided, may result in minor or moderate injury.

⚠ CAUTION: Used without the safety alert symbol indicates potentially hazardous situation which, if not avoided, may result in property damage.

IMPORTANT SAFETY INSTRUCTIONS

When using electrical appliances, basic safety precautions should always be followed, including the following: **PLEASE READ ALL INSTRUCTIONS CAREFULLY BEFORE USING THE UNIT.**

⚠ WARNING: This product contains chemicals, including lead, known to the State of California to cause cancer, and birth defects or other reproductive harm. Wash hands after handling.

⚠ WARNING: To reduce the risk of fire, electrical shock or injury:

- The intended use is described in this manual. The use of any accessory or attachment or the performance of any operation with this appliance other than those recommended in this instruction manual may present a risk of personal injury.
- Close supervision is necessary when any appliance is used by or near children. Do not allow to be used as a toy.
- Keep children and animals at a safe distance when using this appliance.
- Never pull the power lead to disconnect the plug from the cigarette lighter socket. Keep the lead away from heat, oil and sharp edges.
- Be careful not to pinch the lead in the vehicle's doors, windows or levers.
- Do not use automotive vac to pick up liquids, toxic substances, flammable or combustible liquids such as gasoline or use in areas where they may be present.
- Do not operate in the presence of explosives and/or flammable fumes or liquids.
- Do not operate any appliance with a damaged cord or after the appliance malfunctions, is left outdoors, dropped into water or is damaged in any manner. Return the appliance to any authorized service facility.
- Keep hair, loose clothing, and all parts of body away from openings and moving parts.
- Do not insert accessories when unit is running.
- Do not put any object into unit openings. Do not use with any openings blocked; keep free of dust, lint, hair, and anything that may reduce air flow.
- Do not operate the unit without a filter in place. Replace a damaged filter promptly.
- Do not vacuum burning or smoking materials, such as lit cigarette butts, matches or hot ashes.
- Do not use on or near hot surfaces.
- When not in use, the appliance should be stored in a dry place. Children should not have access to stored appliances.
- Before use, check the appliance for damaged or defective parts. Check for breakage of parts, damage to switches and any other conditions that may affect its operation.
- Have any damaged or defective parts repaired or replaced by an authorized repair agent.
- Regularly check the power lead for damage. Replace the lead if it is damaged or defective.
- Never attempt to remove or replace any parts other than those specified in this manual.
- The appliance is designed for use with 12V negative ground vehicle battery systems.
- To reduce risk of damage to cigarette lighter connector and cord, pull by cigarette lighter connector rather than cord when disconnecting charger.
- Make sure cord is located so that it will not be stepped on, tripped over, or otherwise subjected to damage or stress.
- Do not operate appliance with damaged cord or cigarette lighter connector – replace it immediately.
- To reduce risk of electric shock, unplug appliance before attempting any maintenance or cleaning. Turning off controls will not reduce this risk.
- Do not leave appliance when plugged in. Unplug from outlet when not in use and before servicing.
- Do not use on wet surfaces. Do not expose to rain. Store indoors.
- Do not pull or carry by cord, use cord as a handle, close a door on cord, or pull cord around sharp edges or corners. Do not run appliance over cord. Keep cord away from heated surfaces.
- Do not unplug by pulling on cord. To unplug, grasp the plug, not the cord.
- Turn off all controls before unplugging.

⚠ WARNING: Do not operate the appliance with systems which have positive ground or a different voltage.

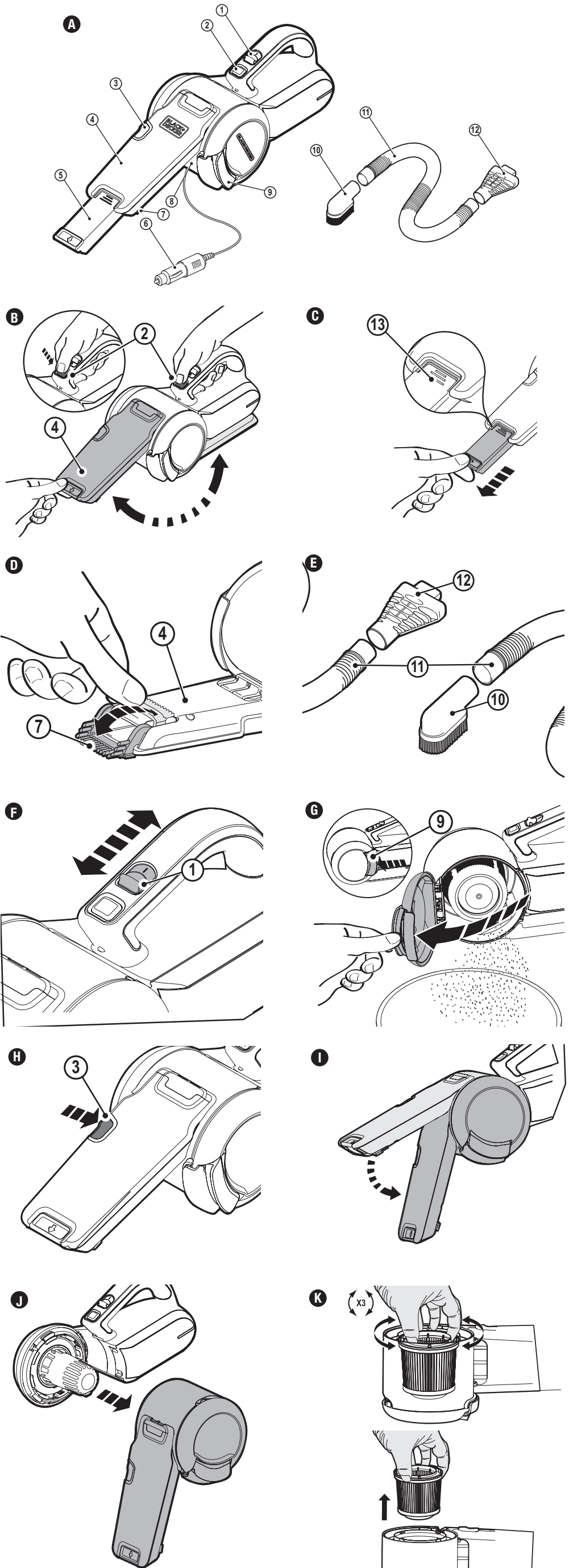
- The cigarette lighter socket may not be live when the ignition is off and/or the key is removed. If in doubt, consult your vehicle's owner's manual for information regarding the above.
- Use only as described in this manual. Use only manufacturer's recommended attachments.
- Do not use the appliance near water. Do not immerse the appliance in water.

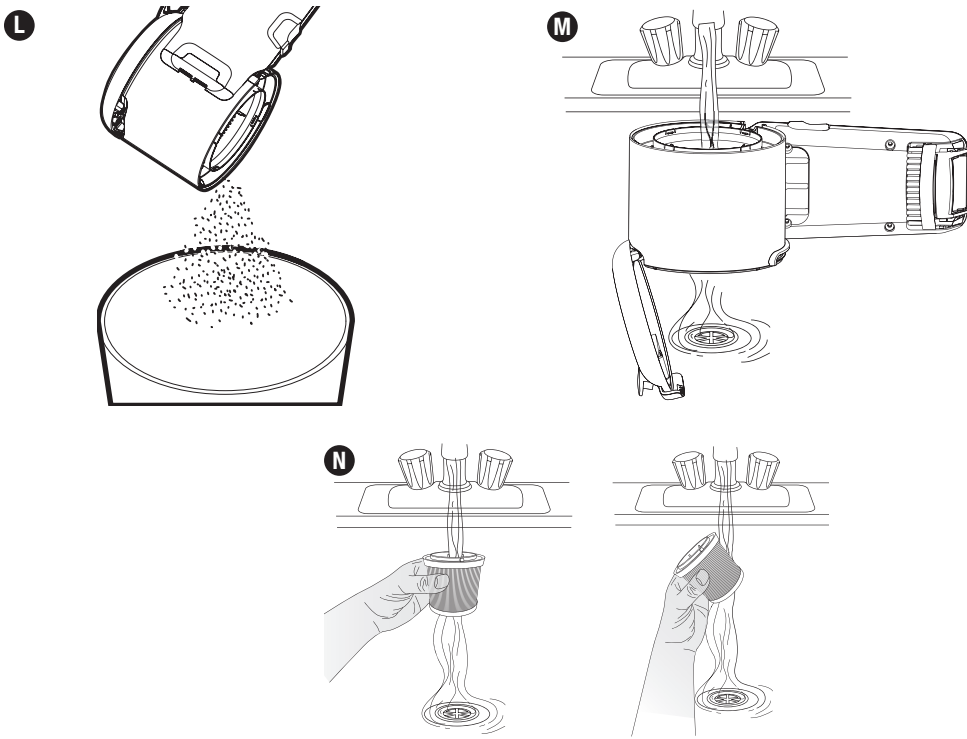
⚠ WARNING: Risk of Fire. Do not replace any vehicle fuse with a rating higher than recommended by the vehicle manufacturer. This product is rated to draw 10 amperes from a 12V vehicle outlet. Ensure that the electrical system in your vehicle can supply this product without causing the vehicle fusing to open. This can be determined by making sure the fuse in the vehicle which protects the outlet is rated higher than 10 amperes. Information on the vehicle fuse ratings are typically found in the vehicle operator's manual. If a vehicle fuse opens repeatedly, do not keep on replacing it. The cause of the overload must be found. On no account should fuses be patched up with tin foil or wire as this may cause serious damage elsewhere in the electrical circuit or cause fire.

Symbols

- The label on your tool may include the following symbols. The symbols and their definitions are as follows:
- V..... volts
- Hz..... hertz
- min minutes
- or DC.. direct current
- Ⓜ Class I Construction (grounded)
- Ⓜ Class II Construction (double insulated)
- 📖 Read instruction manual before use
- 👁 Use proper eye protection
- A amperes
- W watts
- ~ or AC..... alternating current
- no no load speed
- Ⓧ earthing terminal
- ⚠ safety alert symbol
- .../min or rpm..revolutions or reciprocation per minute
- 👤 Use proper respiratory protection
- 👂 Use proper hearing protection

SAVE THESE INSTRUCTIONS





Product Features (Figure A)

This appliance includes some or all of the following features.

- | | |
|-------------------------|----------------------------|
| 1. On / Off switch | 7. Brush tool |
| 2. Nozzle rotate button | 8. Removable dust bowl |
| 3. Bowl release button | 9. Dust bowl door release |
| 4. Nozzle | 10. Right angle brush tool |
| 5. Crevice tool | 11. Hose |
| 6. 12v vehicle adaptor | 12. Hose connector |

Assembly

ADJUSTING THE NOZZLE (FIG. B, C)

- The nozzle (4) is stored under the appliance. To adjust for use, press the nozzle rotate button (2) and rotate the nozzle to the required position.
- Release the nozzle rotate button (2) to lock the nozzle (4) in position.
- The dust nozzle (4) can be extended by pulling the crevice tool (5) until it locks into position.
- The crevice tool can be retracted by pressing the button (13) and pushing the crevice tool (5) back into the nozzle.
- The nozzle (4) should be returned to the storage position under the appliance after use.

USING THE BUILT IN BRUSH (FIG. D)

- The built in brush (7) is located beneath the nozzle (4) and can be rotated and locked into position for use.

FITTING THE ACCESSORIES (FIG E)

The appliance is supplied with the following accessories:

- A right angle brush tool (10) for upholstery
- An extension hose (11)
- A hose connector (12)

To fit an accessory, proceed as follows:

- Fit the hose connector (12) onto the nose of the appliance and attach one end of the hose (12) to the connector.
- Attach the right-angled brush tool (10) to the other end of the hose.
- When not in use, the accessories can be stored in the storage bag.

How To Use

CONNECTING TO THE VEHICLE'S POWER SUPPLY

- Make sure that the appliance is switched off.
- Remove the vehicle cigarette lighter from its socket.
- Plug the vehicle adaptor (6) into the cigarette lighter socket.

SWITCHING ON AND OFF (FIG. F)

- To switch on, slide the on/off switch (1) forward.
- To switch off, slide the on/off switch back.

The appliance can be used for periods of up to 30 minutes without noticeably affecting the power of a normally charged car battery in good condition.

- ⚠ WARNING:** Extended use will drain the battery power.
- Do not run the vehicle's engine while cleaning. This can shorten the life of the appliance.
 - This appliance is intended for household use only and not for commercial or industrial use.

EMPTYING (FIG. F)

- Press the dust bowl release lever (9).
- Proceed to empty the contents of the dust bowl (8) into a suitable container.

Cleaning and maintenance

CLEANING THE DUST BOWL AND FILTERS (FIGS. G - N)

- Press the nozzle rotate button (2) and rotate the nozzle to the position shown in (fig. G).
- Press the bowl release button (3) (fig. H)
- Rotate nozzle down (fig. I)
- Separate nozzle and dust bowl from appliance (fig. J).
- Free the filter from the dust bowl by rotating 3 times counterclockwise (fig. K).
- Lift the filter from the dust bowl (fig. L) and brush off any loose dust.
- Empty any remaining dust from the dust bowl (fig. M).
- Ensure the dust bowl is open (fig. N).
- Rinse out the dustbowl with warm soapy water (fig. O).
- Wash the filters with warm soapy water (fig. P, Q).
- Make sure the filters are dry
- Refit the filters onto the appliance twisting them clockwise until they lock into place.
- Close the dustbowl door. Make sure the release latch (9) clicks into place.

- ⚠ WARNING:** Never use the appliance without the filters. Optimum dust collection will only be achieved with clean filters.

REPLACING THE FILTERS

The filters should be replaced every 6 to 9 months and whenever worn or damaged. Replacement filters are available from your BLACK+DECKER dealer (catalog number PVF100):

- Remove the old filters as described above.
- Fit the new filters as described above.