

OPERATING INSTRUCTIONS

To operate the impact wrench correctly, take the following steps:

- Unlock the wrench through the pull/push system located at the end of the handle (Fig. 1, 2).
- The coloured band (red o-ring) indicates that the wrench has been unlocked, and that the torque can be set (Fig. 1).
- Turn the adjusting knob until the required torque is reached (Fig. 3).
- Lock the wrench through the pull/push system (Fig. 2).
- Carefully pull from the "loading point" in the direction shown by the arrow in figure 4.

To avoid breaking the adjusting mechanism, follow the instructions below:

- DO NOT turn the adjusting knob before unlocking the wrench.
- DO NOT exceed the maximum and minimum limits shown on the scale during the adjusting phase (Fig. 5).
- Set the torque to the lowest value of the range when not in use.



Make sure that wrench calibration is tested after 12 months of operation or after 5,000 cycles.

fig. 1



fig. 2



fig. 3

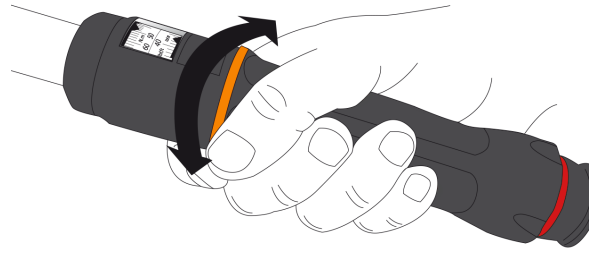


fig. 4

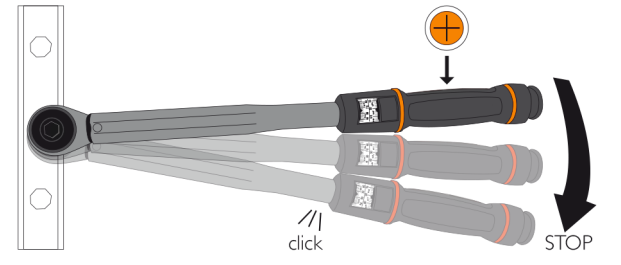
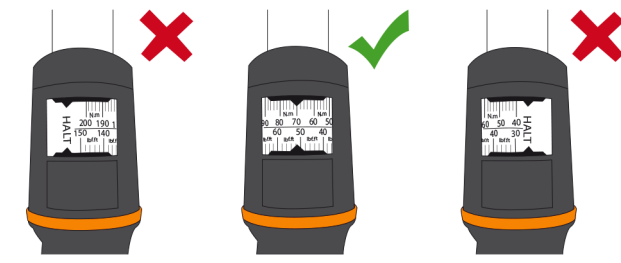


fig. 5



Beta

666N



666N LBF.IN



667N



668N



669N



INSTRUCTIONS FOR USE