



**605E/5**



**605E/10**



INSTRUCTIONS FOR USE

**OPERATING INSTRUCTIONS**

To operate the torque wrench correctly, take the following steps:

- Pull down the adjusting ring (Fig. 1).
- Keep the ring down and rotate the ring to the expected torque number (Fig. 2).
- Make sure the ring table indicates the expected torque number. Then release the adjusting ring (Fig. 3).

**Specifications**

- Adjusting ring (Fig. 4).
- Click mechanism, for right-hand and left-hand tightening (Fig. 5).

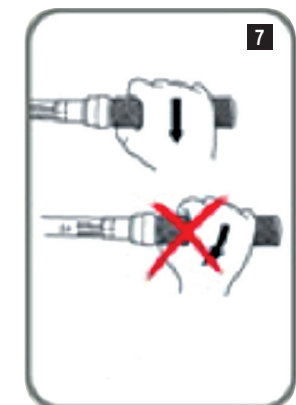
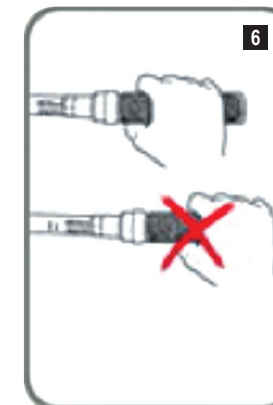
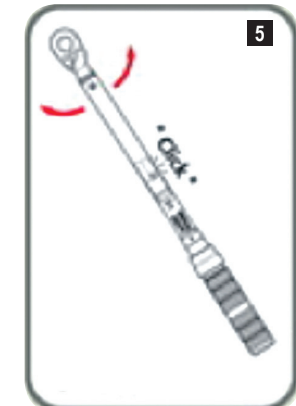
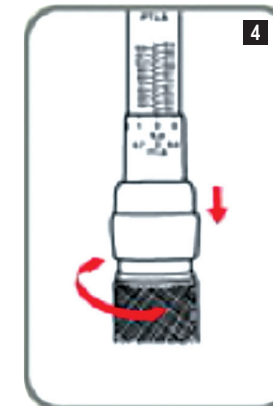
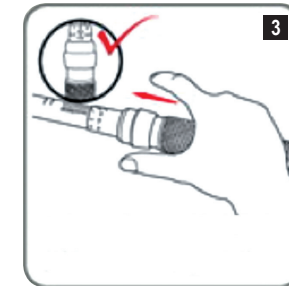
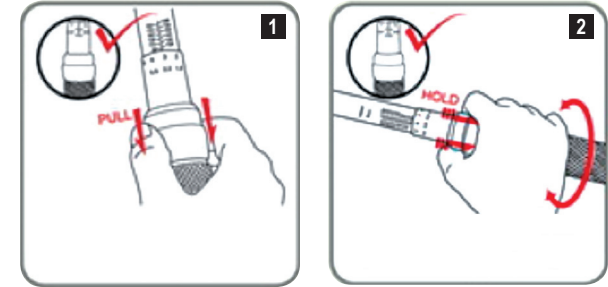
**NB**

- Hold the torque wrench by the middle of the handle (Fig. 6).
- Operate perpendicularly to the handle, seamlessly and smoothly (Fig. 7).

To avoid breaking the adjusting mechanism, follow the instructions below:

- Do not rotate the handle without pulling down the adjusting ring.
- Do not exceed the minimum and maximum limits shown on the scale during the adjusting phase.
- Set the torque to the lowest value of the range when not in use.

 Make sure that wrench calibration is tested after 12 months of operation or after 5,000 cycles.



M210017Z