



# ATD-80250A

## 200 LUMEN LED RECHARGEABLE MOTION ACTIVATED HEADLAMP

### Owner's Manual



#### FEATURES:

- Motion sensing mode to turn light on/off without touching the headlamp
- Constant lumen design delivers rated light output throughout battery charge cycle
- Super-bright COB LED bulb delivers a wider and brighter lighting area
- Two flood light settings for varied brightness and run times
- Memory function records setting after 5 seconds and is recalled the next time device is activated
- Pivoting head allows user to focus light on work area
- Adjustable and removable head band with hard hat clips
- Battery charging indicator shows charging progress
- Automatic shut off and overcharge protection prolongs battery life
- IP65 rated for dust and water resistance
- Includes USB Type-C charging cable

#### SPECIFICATIONS:

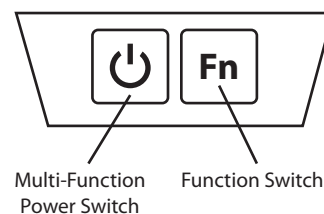
- Flood Light Lumens: 200 High/100 Low
- Flood Light Run Times: 5 hours low/2.5 hours High
- Spot Light Lumens: 120
- Spot Light Run Time: 3 hours
- Battery: 3.7V, 1400 mAh Li-ion rechargeable

#### Operating Instructions

- Charge with the included USB Type-C cable from any 5V DC power source and let the unit fully charge until the LED indicator next to the charging port turns green.
- Press the multi-function power switch once for spot power, twice for low flood power, three times for high flood power and four times to turn off.
- Charge the light after each use if it is used often, to ensure longevity. Charge light every month if it is not in constant use.
- Memory function - Setting is recorded after 5 seconds of activation and is recalled the next time device is activated.
- Motion sensor on/off - Press the function switch to activate motion sensor mode. Once motion sensor is activated, an LED will be lit on the bottom of the unit. Simply wave your hand back and forth in front of the motion sensor to turn the light on or off, avoiding touching the power switch with dirty or gloved hands.

#### Cautions

- DO NOT use in or around tubs, showers, sinks, pools, hot tubs or in a wet environment.
- Use only the recommended voltage and frequency requirements.
- Keep out of reach of children.
- DO NOT operate light with wet hands.
- Keep light away from hot objects.
- DO NOT leave light in direct sunlight for prolonged lengths of time.

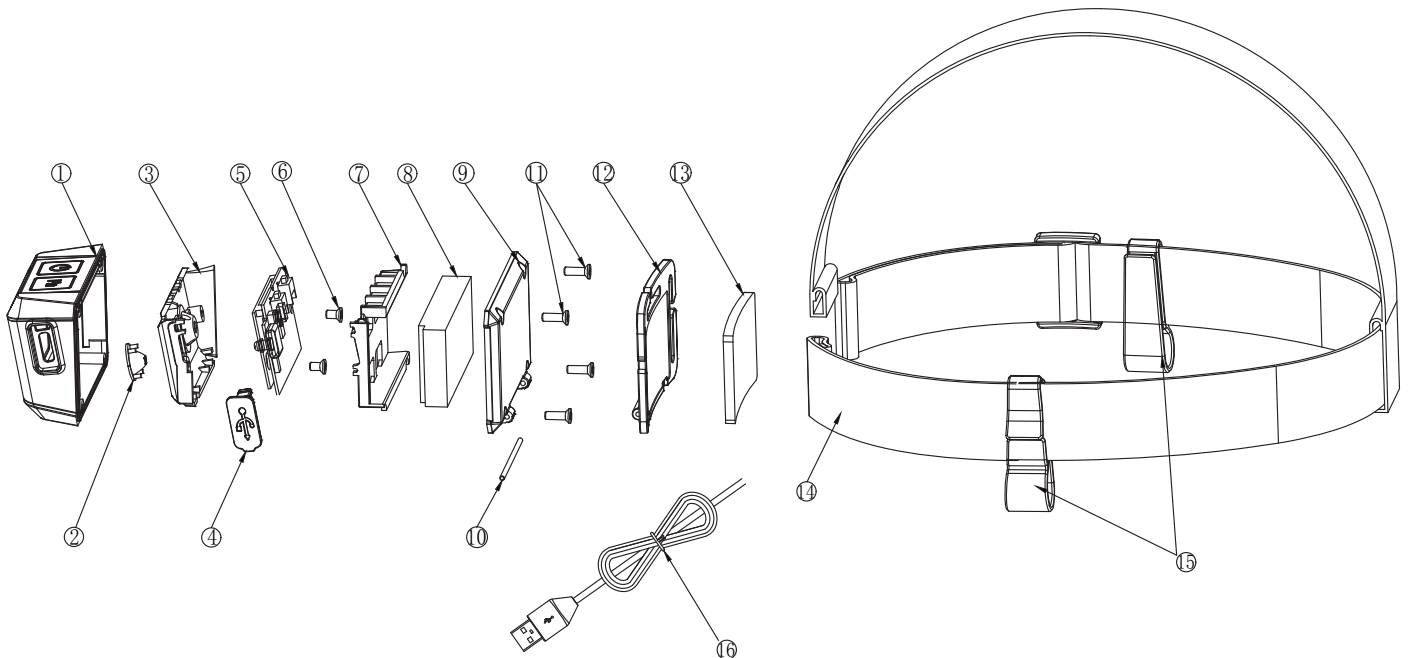


# SABER®

## ATD-80250A

### REPLACEMENT PARTS

Not all components of this product are replacement items, but are illustrated as a convenient reference for position in the assembly sequence. When ordering parts, give model number, part number and description. Call your distributor for current pricing:



PRT80020-14  
Replacement Type C Cable