



COALESCING FILTER INSTRUCTION SHEET

COALESCING (.03 or .01 micron)
 ATD-7785, 7833, 7834, 7835, 7836,
 ATD-7867, 7883, 7884, 7885

Bowl	Max. Pressure	Temperature Range
Metal	250 psi	40°F to 200°F
w/Sight	250 psi	40°F to 160°F
w/Auto Drain	30 psi to 175 psi	40°F to 120°F

WARNING! For compressed air service only. Not to be used on life support systems or breathing air systems. Metal bowl sight is made of polycarbonate, which will craze and or crack if exposed to chemical incompatible with polycarbonate. For any additional information regarding chemical compatibility please contact: General Electric Plastics, One Plastic Avenue, Pittsfield, MA..

INSTALLATION: Install units so the air flow is in the direction as indicated on the head of the unit. Filter should be installed upstream of regulators. If an air dryer is being used, install the filter downstream from the dryer. In most cases a particulate pre-filter with a 3 micron absolute element is recommended to greatly extend the life of the coalescer element. When the coalescer element becomes clogged with dirt, it must be replaced. If it is kept free from dirt, it will coalesce oil indefinitely. A pre-filter will remove water and dirt before it reaches the coalescer, and will reduce maintenance costs. The coalescer filter is then free to remove oil, oil vapors, and submicron sized particles without prematurely clogging with large particles of dirt and scale.

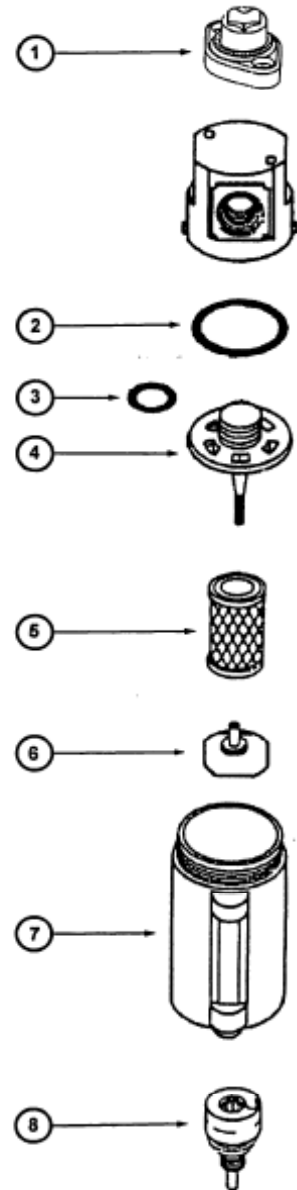
WARNING! Units are die cast aluminum, do not torque while installing. Also, pressurize unit slowly after installation of unit or new element to avoid damage to element.

OPERATION ADJUSTMENTS: If the filter is installed properly, it should give long trouble-free service. The pressure drop across the filter should not exceed 10 psi. If the pressure drop exceeds 10 psi, either the filter element needs to be replaced or the unit is being operated beyond its capacity and a larger size unit is required. Operating the filter at a pressure drop in excess of 10 psi will greatly reduce the efficiency of the filter.

If oil appears downstream: 1) check downstream air lines to be sure that they are free of residual oil; 2) check to see that the filter element and O-ring are in good condition and installed properly.

DIFFERENTIAL PRESSURE INDICATOR MAINTENANCE (#1 on drawing): When the filter is depressurized, periodically clean and grease the piston O-ring with a non-silicon ring grease (see item 1 in drawing).

Item	Description	Kit Part Number	Contents
1	Indicator Sight Kit	DPK-05	Screws, Sightglass, Spring Bracket, O-Ring Inner & Outer Cylinders, Sight Dome
2, 7	Bowl Kit	BKF45M (6 oz.)	Metal Bowl w/Drain Cock, O-Ring
		BKF45W (6 OZ.)	Metal Bowl w/Sight, Drain Cock, O-Ring
3, 4, 6	Repair Kit	RKF45	Retainer, O-Ring, Baffle
5	Element Kit	EK55	.03 Micron Coalescing Element (STD)
		EK55A	.01 Micron Coalescing Element
7	Auto Float Drain Kit (optional)	5200	Float Drain Assembly, Bowl Insert, O-Ring, Retaining Ring
Not Shown	Sight Kit (replacement only)	WK45	Indicator Ball, Sight Tube, Retainer, O-Ring



NOTE: Optional Automatic Float Drain is used for pressure from 30 psi to 175 psi, and from 40°F to 120°F