



Filter Instruction Sheet

ATD-7781, 7782, 7823, 7824, 7825, 7826, 7827, 7828, 7829, 7830
(ATD-7763, 7865, 7866, 7867, 7870, 7871, 7872, 7873, 7884, 7885, 7917, 7918)

| Bowl | Max. Pressure | Temperature Range |
|---------|---------------|-------------------|
| Plastic | 150 psi | 40°F to 125°F |
| Metal | 250 psi | 40°F to 200°F |
| W/sight | 250 psi | 40°F to 160°F |

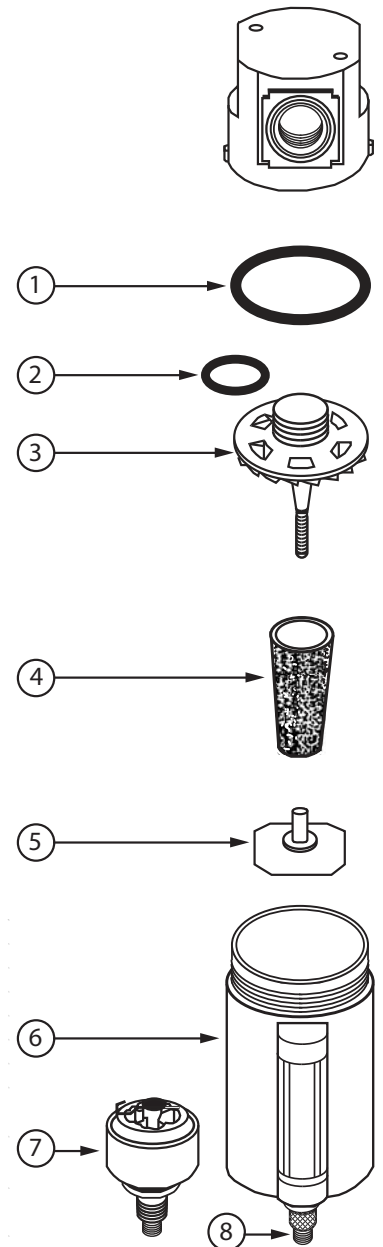
WARNING! For compressed air service only. Do not use on life support systems or breathing air systems. Never use polycarbonate plastic bowls with air supplied by a compressor lubricated with synthetic oils or oils containing phosphate esters or chlorinated hydrocarbons. They can carry over into the air distribution system and chemically attack and possibly rupture the bowl. On these applications use a metal bowl. Also, do not expose the polycarbonate plastic bowl to materials such as trichlorethylene, acetone or paint thinner. Cleaning fluids or other harmful materials will craze and/or rupture the bowl. If materials harmful to polycarbonate are present either inside or outside the bowl, use a metal bowl. For any additional information regarding chemical compatibility, please contact: General Electric Plastics, One Plastic Ave, Pittsfield, MA.

INSTALLATION: Install dryer so that air flows in the direction indicated by the arrow on the head of install filter upstream of regulators and lubricators, and as close as possible to the pneumatic tools or appliance being serviced. Do not install polycarbonate bowl in pressures that exceed 150psi or where there is a presence of solvents harmful to polycarbonate. In these cases, use a metal bowl.

MAINTENANCE AND OPERATION: Filtering out of dirt and foreign particles, and the separation of moisture is automatic with air flow. There are no moving parts and no adjustments are necessary. Accumulated sludge and moisture should be drained off. Sediment should not be permitted to fill above the lower baffle.

Wash filter element at intervals with naphtha to maintain filtering efficiency. To clean element, depressurize system, unscrew polycarbonate bowl, and unscrew element from head. Dry filter element thoroughly before reassembling. Clean filter bowl(s) only with soapy water. Inspect o-ring, replacing if damaged or distorted. Reassemble with care to avoid stripping threads on bowl. After a metal bowl with sight is tightened, it may be rotated up to 180° for proper viewing.

| ITEM | DESCRIPTION | KIT NUMBER | CONTENTS |
|-----------|-----------------------|-------------------|--|
| 4 | ELEMENT KIT | EK35 | 40 MICRON SINTERED BRONZE ELEMENT |
| | | EK35-5 | 5 MICRON SINTERED BRONZE ELEMENT |
| | | EK35-3 | 3 MICRON ABSOLUTE ELEMENT |
| 2, 3, 5 | REPAIR KIT | RKF35 | RETAINER/VANE ASSEMBLY, O-RING, BAFFLE |
| 1, 6 | BOWL KIT | BKF45W (6 OZ.) | METAL BOWL, SIGHT, DRAIN COCK, BALL, O-RING |
| | | BKF46W (9 OZ.) | METAL BOWL, SIGHT, DRAIN COCK, BALL, O-RING |
| NOT SHOWN | BOWL KIT (OPTIONAL) | BKF35 | POLYCARBONATE PLASTIC BOWL WITH PUSH DRAIN, O-RING, BOWL GUARD |
| | | BKF45M (6 OZ.) | METAL BOWL WITHOUT SIGHT, DRAIN COCK, O-RING |
| NOT SHOWN | SIGHT KIT | WK45 | SIGHT TUBE, RETAINER, INDICATOR BALL, O-RING |
| 7 | AUTO DRAIN (OPTIONAL) | 5200 | FLOAT DRAIN ASSEMBLY, BOWL INSERT, O-RING, RETAINER RING |
| 8 | OVERNIGHT DRAIN | CKFK | OVERNIGHT DRAIN ASSEMBLY, BOWL INSERT, O-RING, RETAINER RING |



Model 5200 Internal Float Drain Available (Item #7) To be used for pressures from 30 psi to 175 psi and from 40°F to 120°F. To order filter with float drain assembled, add suffix "F" to filter model number.

View other air tools accessories made by ATD on our website.