



## Filter Instruction Sheet

ATD-7781, 7782, 7823, 7824, 7825, 7826, 7827, 7828, 7829, 7830  
(ATD-7763, 7865, 7866, 7867, 7870, 7871, 7872, 7873, 7884, 7885, 7917, 7918)

Bowl	Max. Pressure	Temperature Range
Plastic	150 psi	40°F to 125°F
Metal	250 psi	40°F to 200°F
W/sight	250 psi	40°F to 160°F

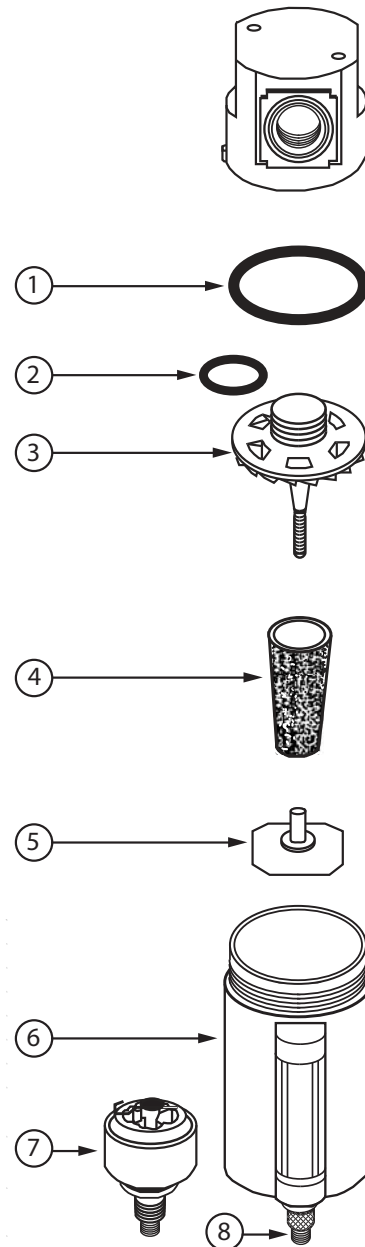
**WARNING!** For compressed air service only. Do not use on life support systems or breathing air systems. Never use polycarbonate plastic bowls with air supplied by a compressor lubricated with synthetic oils or oils containing phosphate esters or chlorinated hydrocarbons. They can carry over into the air distribution system and chemically attack and possibly rupture the bowl. On these applications use a metal bowl. Also, do not expose the polycarbonate plastic bowl to materials such as trichlorethylene, acetone or paint thinner. Cleaning fluids or other harmful materials will craze and/or rupture the bowl. If materials harmful to polycarbonate are present either inside or outside the bowl, use a metal bowl. For any additional information regarding chemical compatibility, please contact: General Electric Plastics, One Plastic Ave, Pittsfield, MA.

**INSTALLATION:** Install dryer so that air flows in the direction indicated by the arrow on the head of install filter upstream of regulators and lubricators, and as close as possible to the pneumatic tools or appliance being serviced. Do not install polycarbonate bowl in pressures that exceed 150psi or where there is a presence of solvents harmful to polycarbonate. In these cases, use a metal bowl.

**MAINTENANCE AND OPERATION:** Filtering out of dirt and foreign particles, and the separation of moisture is automatic with air flow. There are no moving parts and no adjustments are necessary. Accumulated sludge and moisture should be drained off. Sediment should not be permitted to fill above the lower baffle.

Wash filter element at intervals with naphtha to maintain filtering efficiency. To clean element, depressurize system, unscrew polycarbonate bowl, and unscrew element from head. Dry filter element thoroughly before reassembling. Clean filter bowl(s) only with soapy water. Inspect o-ring, replacing if damaged or distorted. Reassemble with care to avoid stripping threads on bowl. After a metal bowl with sight is tightened, it may be rotated up to 180° for proper viewing.

ITEM	DESCRIPTION	KIT NUMBER	CONTENTS
4	ELEMENT KIT	EK35	40 MICRON SINTERED BRONZE ELEMENT
		EK35-5	5 MICRON SINTERED BRONZE ELEMENT
		EK35-3	3 MICRON ABSOLUTE ELEMENT
2, 3, 5	REPAIR KIT	RKF35	RETAINER/VANE ASSEMBLY, O-RING, BAFFLE
1, 6	BOWL KIT	BKF45W (6 OZ.)	METAL BOWL, SIGHT, DRAIN COCK, BALL, O-RING
		BKF46W (9 OZ.)	METAL BOWL, SIGHT, DRAIN COCK, BALL, O-RING
NOT SHOWN	BOWL KIT (OPTIONAL)	BKF35	POLYCARBONATE PLASTIC BOWL WITH PUSH DRAIN, O-RING, BOWL GUARD
		BKF45M (6 OZ.)	METAL BOWL WITHOUT SIGHT, DRAIN COCK, O-RING
NOT SHOWN	SIGHT KIT	WK45	SIGHT TUBE, RETAINER, INDICATOR BALL, O-RING
7	AUTO DRAIN (OPTIONAL)	5200	FLOAT DRAIN ASSEMBLY, BOWL INSERT, O-RING, RETAINER RING
8	OVERNIGHT DRAIN	CKFK	OVERNIGHT DRAIN ASSEMBLY, BOWL INSERT, O-RING, RETAINER RING



**Model 5200 Internal Float Drain Available (Item #7)** To be used for pressures from 30 psi to 175 psi and from 40°F to 120°F. To order filter with float drain assembled, add suffix "F" to filter model number.

View other air tools accessories made by ATD on our website.