



Filter / Regulator Instruction Sheet

ATD-7790, 7853, 7854, 7855, 7856, 7857, 7858, 7859, 7860
(ATD-7763, 7876, 7877, 7878, 7879, 7884, 7885, 7888)

Bowl	Max. Pressure	Temperature Range
Metal	250 psi	40°F to 200°F
W/Sight	250 psi	40°F to 160°F
W/Auto Drain	30 psi to 175 psi	40°F to 120°F

WARNING! For compressed air service only. Do not use on life support systems or breathing air systems. Never use polycarbonate plastic bowls with air supplied by a compressor lubricated with synthetic oils or oils containing phosphate esters or chlorinated hydrocarbons. They can carry over into the air distribution system and chemically attack and possibly rupture the bowl. On these applications use a metal bowl. Also, do not expose the polycarbonate plastic bowl to materials such as trichlorethylene, acetone or paint thinner. Cleaning fluids or other harmful materials will craze and/or rupture the bowl. If materials harmful to polycarbonate are present either inside or outside the bowl, use a metal bowl. For any additional information regarding chemical compatibility, please contact: General Electric Plastics, One Plastic Ave, Pittsfield, MA.

MAINTENANCE AND OPERATION:

FILTER: Filtering out of dirt and foreign particles, and the separation of moisture is automatic with air flow. There are no moving parts and no adjustments are necessary. Accumulated sludge and moisture should be drained off. Sediment should not be permitted to fill above the lower baffle.

Wash filter element at intervals with naphtha to maintain filtering efficiency. To clean element, depressurize system, unscrew polycarbonate bowl, and unscrew element from head. Dry filter element thoroughly before reassembling. Clean filter bowl(s) only with soapy water. Inspect o-ring, replacing if damaged or distorted. Reassemble with care to avoid stripping threads on bowl. After a metal bowl with sight is tightened, it may be rotated up to 180° for proper viewing.

REGULATOR: The regulator will accurately control secondary pressure between 2 and 125 PSI. The self-bleed venting feature permits use on dead end applications.

After the regulator is installed, back off pressure adjusting knob before the air is turned on. Turn on the air supply and regulate the adjusting knob until pressure gauge shows the desired pressure. To lock adjusting knob, push down until knob snaps into locking groove. To make regulator tamper-resistant, remove adjusting knob from unit. Regulator may be adjusted by replacing knob.

IMPORTANT! Use care to avoid screwing fittings too far into body of units as it may close internal ports. Normally finger tight plus one turn will seal.

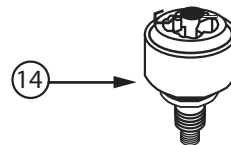
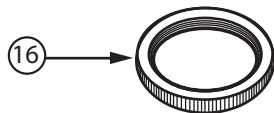
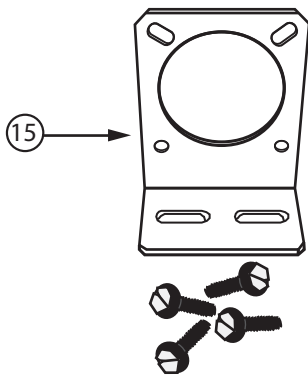
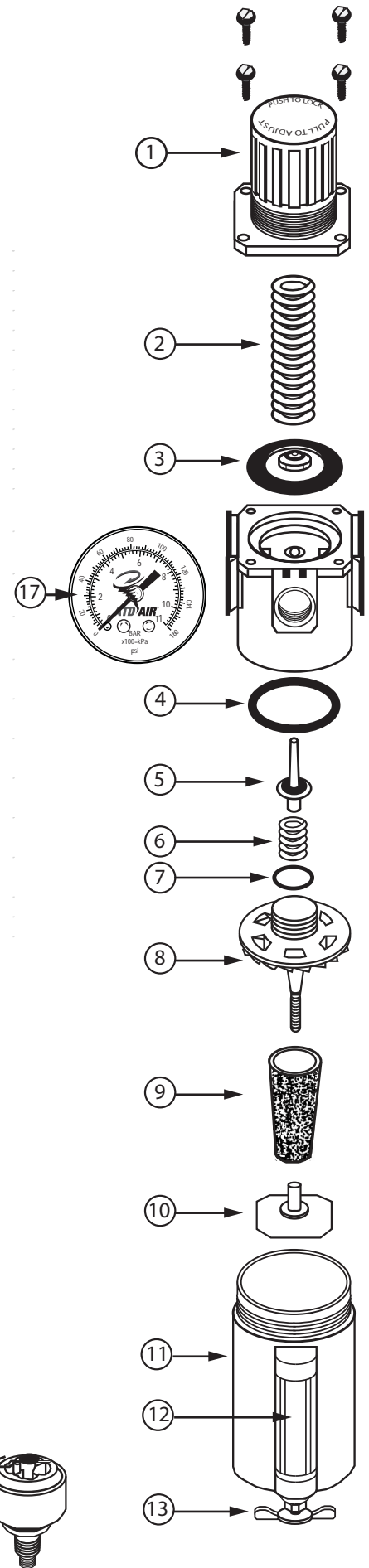
TAMPER RESISTANT OPTION: The tamper-resistant cap (P/N 75104) has been provided in the plastic bag to ensure that the reduced pressure cannot be tampered with. To make the unit "tamper-resistant", proceed as follows:

Turn the adjustment knob until desired pressure is reached. Remove the adjustment knob by pulling upward. Install the tamper resistant cap in its place.

NOTE: To make permanently tamper-resistant, LOCTITE the cap into place.

CAUTION: By permanently Loctiting the tamper-resistant cap into place, the pressure adjustment cannot be changed.

ITEM	DESCRIPTION	KIT NUMBER	CONTENTS
1	REGULATOR BONNET REPAIR KIT	SC35	CAP, BONNET LOCK SCREWS
		SC35T	T-HANDLE
2	ADJUSTING SPRING KIT	SK35	ADJUSTING SPRING, 2-125 PSI
		SK35L	ADJUSTING SPRING, 2-60 PSI
		SK35H	ADJUSTING SPRING, 2-250 PSI
3	DIAPHRAGM REPAIR KIT	DK35	VALVE ASSEMBLY, O-RING, SPRING
		DK35N	GASKET, BACK CAP
9	ELEMENT KIT	EK35-3	3 MICRON ABSOLUTE ELEMENT
		EK35-5	5 MICRON SINTERED BRONZE ELEMENT
NOT SHOWN	BOWL KIT	BKF35	POLYCARBONATE PLASTIC BOWL WITH PUSH DRAIN, O-RING, BOWL GUARD
4, 11, 13		BKF45M (6 oz.)	METAL BOWL WITHOUT SIGHT, DRAIN COCK, O-RING
4, 11, 12, 13		BKF45W (6 oz.)	METAL BOWL, SIGHT, DRAIN COCK, BALL, O-RING
4, 11, 12, 13		BKF46W (9 oz.)	METAL BOWL, SIGHT, DRAIN COCK, BALL, O-RING
5, 6, 7, 8, 10		VALVE KIT	VKB75
NOT SHOWN	OVERNIGHT DRAIN (OPTIONAL)	CKFK	OVERNIGHT DRAIN ASSEMBLY, BOWL INSERT, O-RING, RETAINER RING
12	SIGHT GLASS KIT	WK45	SIGHT GLASS, RETAINER, INDICATOR BALL, O-RINGS
14	AUTO DRAIN KIT (OPTIONAL)	5200	FLOAT DRAIN ASSEMBLY
15	MOUNTING BRACKET (OPTIONAL)	RBK5	MOUNTING BRACKET, SCREWS
16	PANEL MOUNT RING (OPTIONAL)	PKR35	PANEL MOUNT RING
17	GAUGE, 0-160 PSI	ATD-7921	GAUGE ONLY



Learn more about air tools accessories we have.