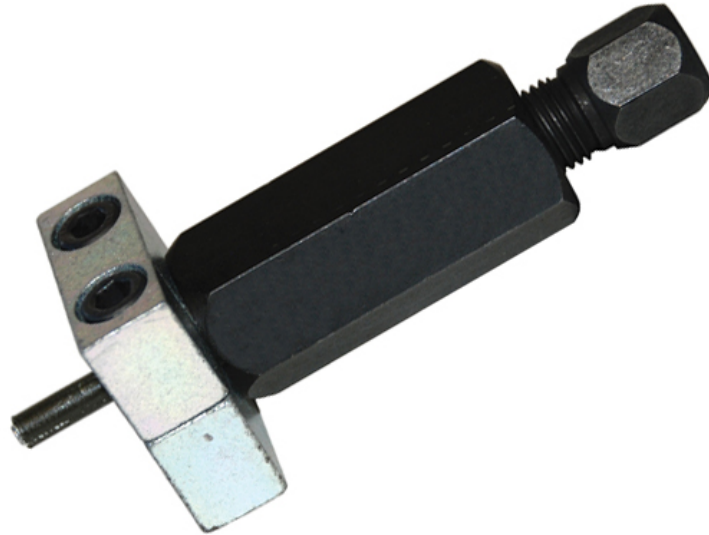




ATD-5481

In-Line Flaring Tool - SAE



This in-line flaring tool enables the user to flare copper or soft steel tubing in tight spaces with its low profile design. The design also enables the technician to use a ratchet or wrench. This new patented flaring tool design makes perfect single or double flares easily. The double clamp and hex body keeps tube from slipping, keeps flares centered, and makes the job of flaring easier.

Features:

- Low profile design allows for use on or off the vehicle
- Designed to be used with a ratchet to make flares easier
- In-line design makes a more accurate flare
- Double clamp and hex screw design keeps tubing locked tightly in position
- For use on thin walled steel and copper tubing
- Superior to bar-type flaring tools
- Patent Pending

Available Configurations:

- ATD-5480 - In-Line Flaring Tool - Auto-Specific Set
- ATD-5481 - In-Line Flaring Tool - SAE
- ATD-5482 - In-Line Flaring Tool - Metri

ATD-5481