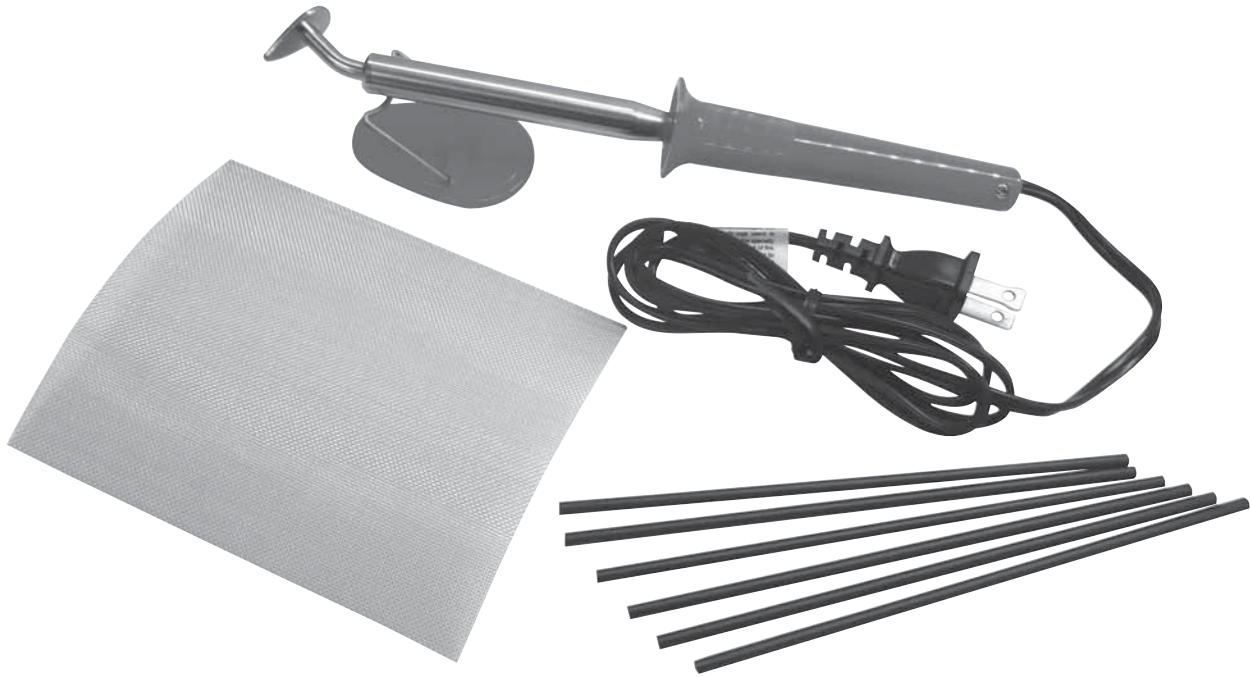




ATD-3760 Plastic Welding Kit Manual



Features:

- Used to repair cracked or broken plastic body panels and bumpers
- 110/120V AC, 50/60 Hz

Includes:

- Plastic Welding Iron
- Stainless Steel Mesh (5)
- Plastic Welding Rods for
 - Polypropylene (6)
 - Polyethylene (6)
 - Polystyrene (6)
 - Acrylonitrile butadiene styrene (ABS) (6)
- Plastic Welding Iron Stand



WARNING



WARNING: This product may contain chemicals, including lead, known to the State of California to cause cancer, birth defects or other reproductive harm. *Wash hands after handling.*

SAFETY & HANDLING PRECAUTIONS

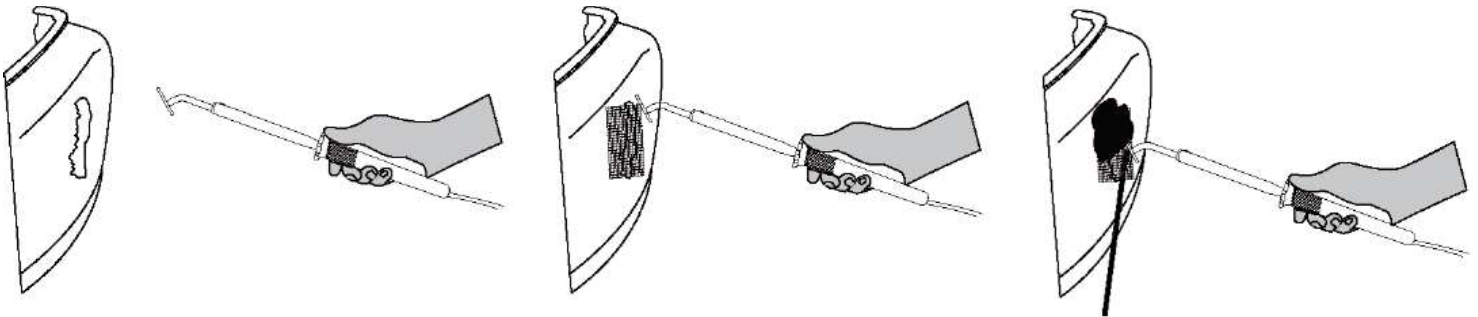
Once the welding iron is plugged in and the switch is turned on, the temperature will reach 660° - 930° F (348° to 498° C) Mishandling may cause, but is not limited to burns, blindness and/or fire.

WARNING

- Wear safety glasses and heat resistant gloves while using this welding iron.
- Keep long hair and clothing from coming into contact with the hot welding iron.
- Do not immerse this welding iron in water.
- Do not use in damp or wet locations.
- When repair is completed, turn the power off and make sure the welding iron is cool before moving or storing it.
- Repairing plastics creates high temperatures. Please be aware of potential burning from hot plastics as well.
- This product was designed for plastic repair. Do not use this product for any other use.
- This Plastic Welding Kit should be used with the original plastic welding rods and stainless steel mesh only. Use of any other products could yield unfavorable results.
- Never disassemble, there are no user serviceable parts inside.
- Unplug this unit after each use.
- When unplugging your welding iron, hold and pull the plug itself, do not unplug by pulling on the cord.

OPERATION

- Plug welding iron into 110/120V AC outlet.
- Welding Iron will take about 5 minutes to reach operating temperature. Place the iron on it's stand on a flat surface while it heats up to prevent any accidental burning. Do NOT touch any part of the iron besides the handle or cord.
- Cut the stainless steel mesh to the proper size and shape required by your specific job.
- Melt the steel mesh into the area being repaired until the parent material can be seen penetrating the mesh.
- Melt the plastic filler rod into the surface of the mesh and into the edges of the repair. To cover the repair, build up the repair to the required depth.
- Allow the repaired area to cool completely. Where required, the repaired area can now be sanded for finishing.



PARTS LIST

- ATD-3760 Plastic Welding Kit
- ATD-3761 Stainless Steel Mesh
- ATD-3762 Plastic Welding Rod - PP (Polypropylene)
- ATD-3763 Plastic Welding Rod - PE (Polyethylene)
- ATD-3764 Plastic Welding Rod - PS (Polystyrene)
- ATD-3765 Plastic Welding Rod - ABS (Acrylonitrile butadiene styrene)