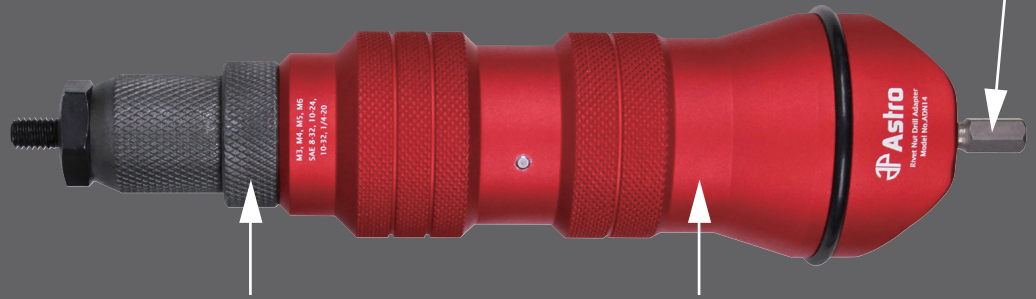




Model # ADN14

# RIVET NUT DRILL ADAPTER KIT

Easily convert cordless or corded drills into power rivet nut setters



Use **12V and up** cordless drills for **aluminum and steel rivet nuts**, or **14.4V and up** for **stainless up to 1/4"** (all drills must feature torque limiting clutch)

Innovative design withstands **4X THE PULLING FORCE** of other adapters, and features a **CNC machined** billet aluminum body and Cr-Mo mandrels.



Includes 8 mandrels and nosepieces in Metric and SAE:  
M3, M4, M5, M6, 8-32, 10-32, 10-24 and 1/4-20

Model	Hex Shank Size	Rivet Type	Weight	Recommended RPM
<b>ADN14</b>	<b>1/4"</b>	<b>Rivet Nut</b>	<b>2.4 lbs</b>	<b>Low speed (&lt;240 RPM)</b>

### Riveting Capability

Rivet Nut Size	Nut Material	SAE 8-32	SAE 10-24	SAE 10-32	SAE 1/4-20	M3	M4	M5	M6
		Aluminum	✓	✓	✓	✓	✓	✓	✓
Steel/Copper	✓	✓	✓	✓	✓	✓	✓	✓	
Stainless Steel	✓	✓	✓	✓	✓	✓	✓	✓	

### Sizing Chart

Rivet Nut	Rivet Nut Diameter	Drill Hole Size	Grip Range
M3	4.9mm OD	5mm (13/64")	26 – 16ga
M4	5.9mm OD	6mm (7/32")	26 – 16ga
M5	6.87mm OD	7mm (9/32")	26 – 16ga
M6	8.80mm OD	9mm (3/8")	26 – 13ga
8-32	5.9mm OD	6mm (7/32")	26 – 16ga
10-32	6.87mm OD	7mm (9/32")	26 – 16ga
10-24	6.87mm OD	7mm (9/32")	26 – 16ga
1/4-20	8.9mm OD	9mm (3/8")	26 – 13ga



SHOP EQUIPMENT

UNDERCAR KIT    HYDRAULICS    HAND TOOLS    AIR TOOLS



Learn more about power drills and drivers we have.