



Model: **9479**

Product Type:
**6PC PROFESSIONAL DEUTSCH
RATCHETING CRIMPING TOOL SET**



WARNING



Study, understand and follow all instructions provided with this product. Read these instructions carefully before installing, operating, servicing or repairing this tool. Keep these instructions in a safe accessible place.

INTENDED USE OF THE TOOL

The tool is designed to be used for crimping Deutsch style 20-10 AWG DTP, DT and DTM connectors. Do not use this tool outside of the designed intent. Never modify the tool for any other purpose or use.



WARNING



Caution: To help prevent personal injury

- Use of this product can expose you to chemicals including ethylene glycol, gasoline vapors and engine exhaust, which are known to the State of California to cause cancer, birth defects, or reproductive harm. Failure to read and follow all warnings and operating instructions may result in damages and serious injury or death.
- Always wear ANSI approved goggles when using this product. (Users and Bystanders).
- Never use this tool for any application other than for which it was designed.
- Only use accessories designed for this tool.
- Never alter or modify this tool in any way.
- Improper operation and/or maintenance of the tool, modification of the tool, or use of the tool with accessories not designed for it could result in serious injury or death.
- Always select the correct accessories of the correct size and design for the job that you are attempting to perform.
- Always work in a clean, safe, well-lit, organized and adequately equipped area.
- Do not begin repairs without assurance that vehicle is in secure position, and will not move during repair.



**Astro Pneumatic
Tool Company**

Unpacking

When unpacking, check the parts diagram and part number listing on page 3 to make sure all parts are included. If any parts are missing or damaged, please call your distributor.

PRODUCT INFORMATION:

- Includes jaws for 10~20 AWG Deutsch connectors including: Size 12 (DTP), Size 16 (DT) and Size 20 (DTM)
- Adjustable ratcheting crimper with quick change interchangeable jaw design
- Crimps terminal and insulation in one step

SPECIFICATIONS:

- 6PC Jaws -
 - K1: 14-12 AWG for Size 12 (DTP)
 - K2: 12-10 AWG for Size 12 (DTP)
 - K3: 18-14 AWG for Size 16 (DT)
 - K4: 20-16 AWG for Size 16 (DT)
 - K5: 20-16 AWG for Size 20 (DTM)
 - K6: 16-12 AWG for Size 16 (DT)
- 1PC - Crimper

6PC PROFESSIONAL DEUTSCH RATCHETING CRIMPING TOOL SET



DO NOT DISCARD – GIVE TO USER



Model: **9479**

Product Type:
**6PC PROFESSIONAL DEUTSCH
RATCHETING CRIMPING TOOL SET**

OPERATING INSTRUCTIONS

1. Read the manual and familiarize yourself with matching the correct jaw sets with the various types of terminals. This is important for proper operation and a secure crimp of the terminal. The jaws are a 2 piece matched set and must be kept together to prevent mismatching of the jaw sets and causing damage to the jaws.

2. This crimping tool is provided with a ratcheting locking system with an automatic and manual release. The handles lock as they are squeezed together to prevent reversing, until the handles are together and the crimp is complete. The lock will then automatically release, allowing the jaws to fully open. The manual release lever is located on the inside of the handle to release the lock if the lock does not release automatically, or if releasing the lock is necessary prior to crimping the terminal. (See TROUBLESHOOTING to the right)

3. Choose the correct jaw set for the type of terminal to be crimped. (See chart below)

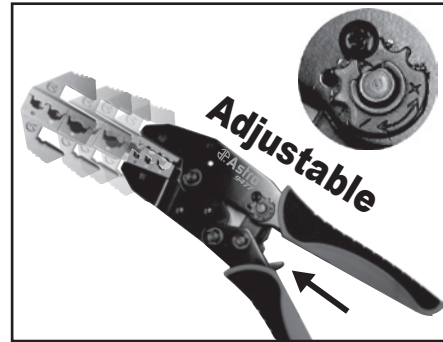
4. To change the jaw set, squeeze the handles together until the automatic release opens the jaws. Remove the jaws by pulling straight out of the end of the crimping tool. The jaws are easily removed and installed, since they are retained by spring loaded steel balls, which seat into a detent on the jaws. Install the correct jaws by pushing the jaws into the end of the crimping tool until the jaws lock securely into place. The jaws can also be switched to the opposite side of the crimping tool for desired right or left hand operation.

5. To begin operation, strip electrical wire to the correct length, slide terminal onto wire, insert terminal into the correct size opening of the jaw, and squeeze handles together until the terminal is crimped and the jaws release automatically. Inspect the crimped terminal to assure that the crimp pressure is adjusted properly. (See Adjustment and TROUBLESHOOTING to the right if jaws do not release automatically, or if the terminal is not crimped properly)

6. Adjustment: The adjuster is located on the side of the handle. (See page 2) Remove screw, turn adjuster clockwise to decrease crimp pressure and to automatically release jaws sooner. Install screw after adjustment is made. Turn adjuster counterclockwise to increase crimp pressure. If the jaws do not release automatically with the handles squeezed together, the pressure should be decreased until the automatic release opens the jaws. (See photo to the right)

TROUBLESHOOTING

1. During operation of crimping the terminal, if the jaws do not release automatically, squeeze the handles completely together and release hand pressure from handles. If the jaws still do not release automatically, squeeze the handles to release tension on the release lever, push the release lever forward, and release hand pressure from handles until the jaws release to the open position. (Arrow is pointing to release lever in photo below)



2. Please check the following if the crimping tool does not crimp the terminal properly, or if the jaws do not release automatically:

- Incorrect jaw set installed for the terminals being crimped.
- Mismatched jaw set installed, or jaws are not locked into place.
- Undersize or oversize terminals.
- Crimping tool may need adjusted. (See Adjustment in the Operating Instructions)

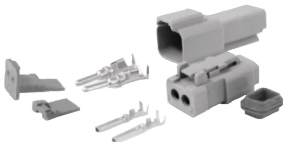
APPLICATIONS:



DT P Series



DT Series



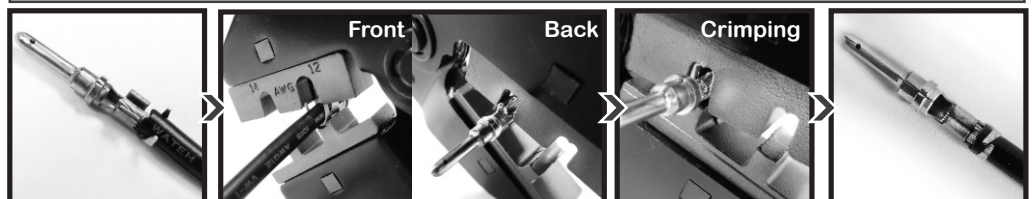
DT M Series



STEPS FOR CHOOSING WIRE, TERMINAL HOUSING AND DIE SET.

	(AWG) 6	8	10	12	14	16	18	20	22	24
Checking:										
(1) Wire AWG										
↓										
(2) Terminal Size:										
↓										
(3) Housing										
↓										
(4) Die Set										

DT P Series for Size 12 (AWG 10-14)
DT M Series for Size 20 (AWG 18-24)
DT Series for Size 16 (AWG 12-18)
K2 Die for Size 12 (AWG 10-12)
K1 Die for Size 12 (AWG 10-12)
K3 Die for Size 16 (AWG 14-18)
K6 Die for Size 16 (AWG 14-18)
K4 Die for Size 16 (AWG 14-18)
K5 Die for Size 20 (AWG 18-20)





**Astro Pneumatic
Tool Company**

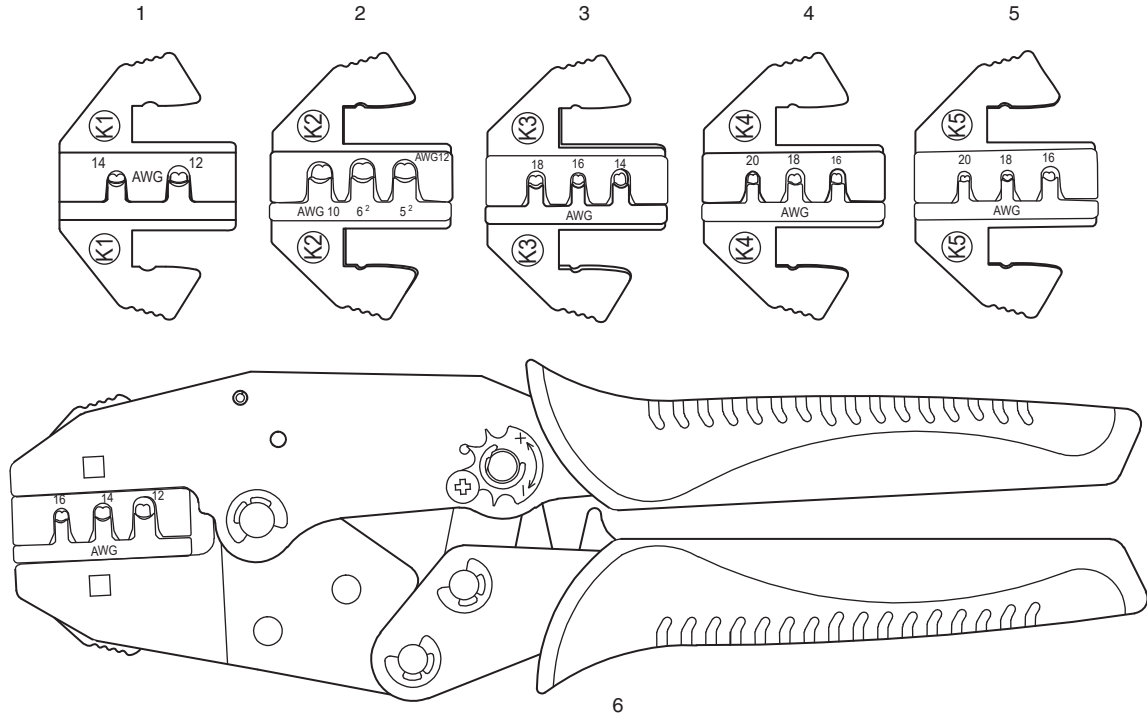
Model:

9479

Product Type:

**6PC PROFESSIONAL DEUTSCH
RATCHETING CRIMPING TOOL SET**

PARTS BREAKDOWN



Parts List

<i>Index No.</i>	<i>Part No.</i>	<i>Description</i>	<i>Qty</i>
1	9479-1	K1 Jaw 14-12 AWG for Size 12 (DTP)	1
2	9479-2	K2 Jaw 12-10 AWG for Size 12 (DTP)	1
3	9479-3	K3 Jaw 18-14 AWG for Size 16 (DT)	1
4	9479-4	K4 Jaw 20-16 AWG for Size 16 (DT)	1
5	9479-5	K5 Jaw 20-16 AWG for Size 20 (DTM)	1
6	9479 T	Crimper	1