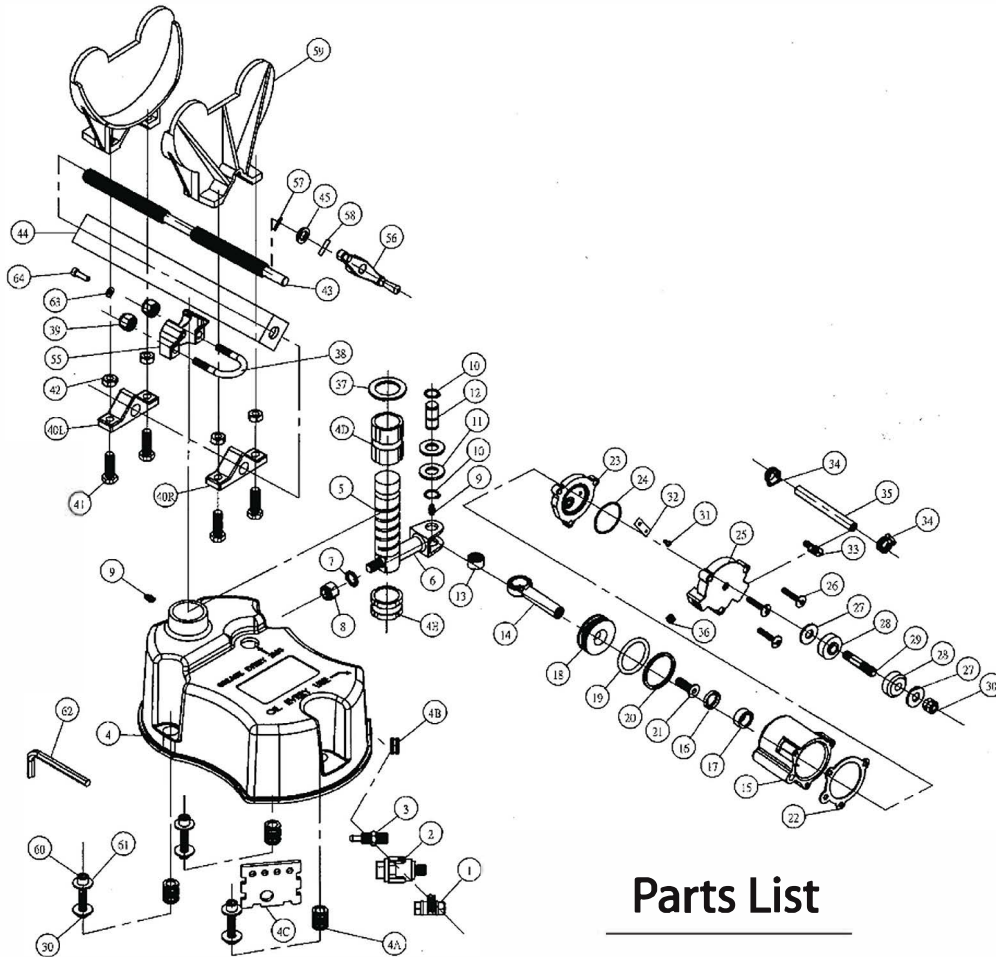


**PARTS BREAKDOWN**



**Parts List**

Index No.	Part No.	Description	Qty.
1	4550-E01	SAFETY VALVE	1
2	4550-E02	OIL GAGE	1
3	4550-E03	PIPE JOINT	1
4	4550-E04	SAFETY GUARD	1
4A	4550-E05	COLLAR	3
4B	4550-E06	CAP NUT	1
4C	4550-E07	PLATE	1
4D	4550-E08	OIL COLLAR	1
4E	4550-E09	OIL COLLAR	1
5	4550-E10A	SCREW SHAFT	1
6	4550-E11	DRIVEN SHAFT	1
7	4550-E12	SPRING WASHER	1
8	4550-E13	NUT(1/2"-12)	1
9	4550-E14	OIL CUP	2
10	4550-E15	*RETAINING RING (STW-016)*	2
11	4550-E16	WASHER (PC)	2
12	4550-E17	SHAFT	1
13	4550-E18	BEARING	1
14	4550-E19	*CYLINDER DRIVE SHAFT*	1
15	4550-E20	CYLINDER	1
16	4550-E21	OIL SEAL(TC)	1

Index No.	Part No.	Description	Qty.
17	4550-E22	OIL COLLAR	1
18	4550-E23	PISTON	1
19	4550-E24	O-RING(40.64*5.34)	1
20	4550-E25	PISTON WASHER	1
21	4550-E26	SCREW BOLT	1
22	4550-E27	CYLINDER WASHER	1
23	4550-E28	VALVE CASING	1
24	4550-E29	O-RING(40.8*1.85)	1
25	4550-E30	VALVE SEAT	1
26	4550-E31	SCREW BOLT	3
27	4550-E32	WASHER	2
28	4550-E33	VIBRATION WASHER	2
29	4550-E34	SCREW BOLT	1
30	4550-E35	NUT(3/8"-16)	5
31	4550-E36	SCREW BOLT	1
32	4550-E37	VALVE WASHER	1
33	4550-E38	PIPE JOINT(90-)	1
34	4550-E39	PIPE CLIP	2
35	4550-E40	PIPE	1
36	4550-E41	SCREW BOLT	1
37	4550-E42	WASHER(PC)	1

Index No.	Part No.	Description	Qty.
38	4550-E43	U-BOLT	1
39	4550-E44	NUT(3/8"-16)	2
40L	4550-E45	SCREW BASE	1
40R	4550-E46	SCREW BASE	1
41	4550-E47	SCREW BOLT	4
42	4550-E48	NUT(M10)	4
43	4550-E49	SCREW HAND	1
44	4550-E50	SCREW BASE	1
45	4550-E51	WASHER	1
55	4550-E52	SUPPORT BASE	1
56	4550-E53	HAND WHEEL	1
57	4550-E54	SPRING PIN(SP-30180)	1
58	4550-E55	SPRING PIN(SP-50220)	1
59	4550-E56	OIL-PAINTS BASE	2
60	4550-E57	SCREW BOLT	3
61	4550-E58	WASHER	6
62	4550-E59	L-Service Wrench(8mm)	1
63	4550-E60	Washer(13*6.5*0.8t)	1
64	4550-E61	"Screw BoltM6*20mm"	1