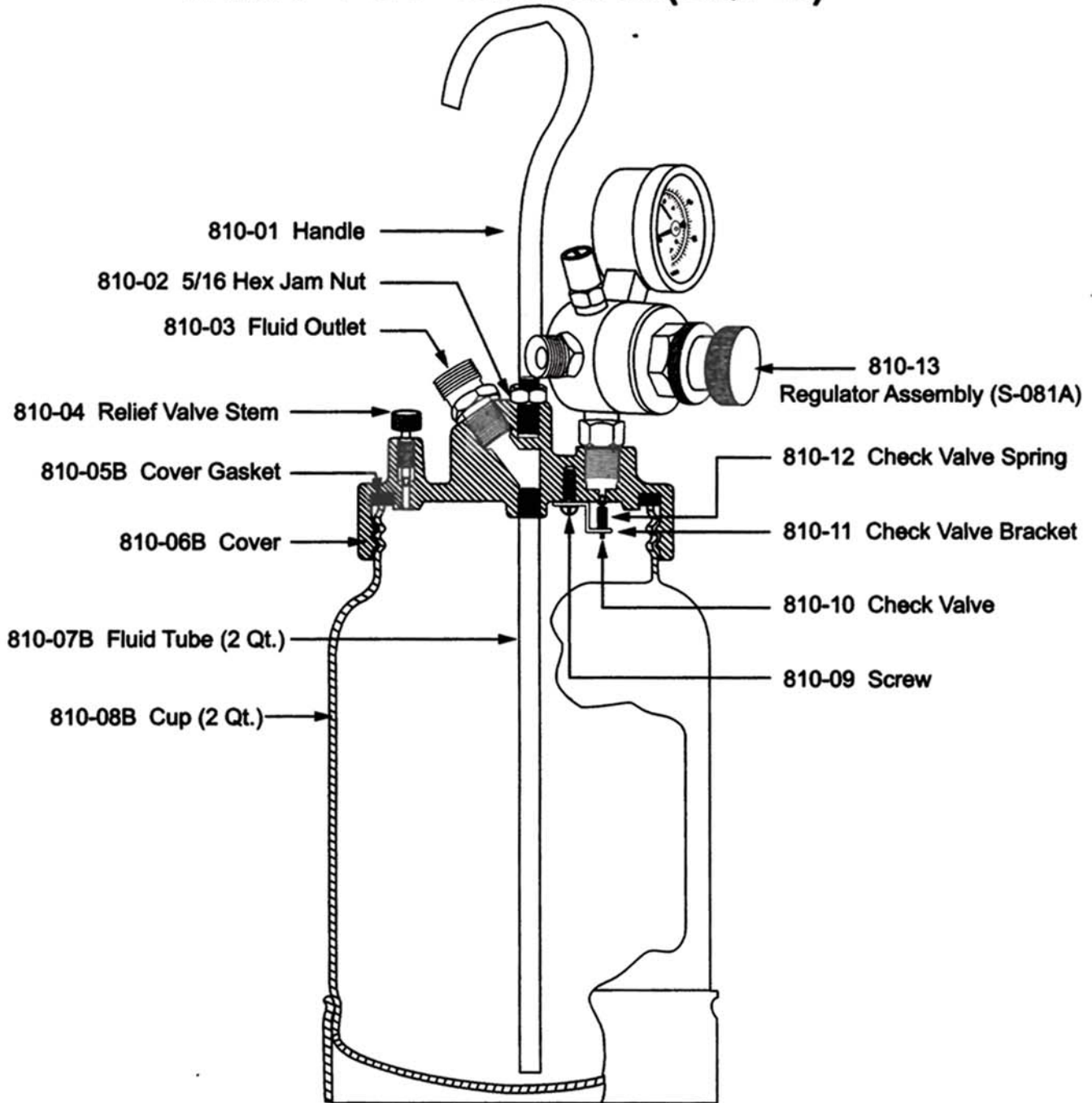


P/N	Description	Q'TY	P/N	Description	Q'TY	P/N	Description	Q'TY
1	Air Cap Set	1	13	Fluid adjusting Knob	1	20B	Air Valve Packing	1
2	Fluid Nozzle	1	14	Air adjusting Assembly (For SJ-111A)	1	20C	Valve Body	1
3	Baffle	1	14-1	Nut (For SJ-111)	1	20D	O Ring	1
5	Packing(For Needle)	1	15	Screw, Trigger	1	20-1	Air Valve Assembly (For SJ-111)	1
6	Needle Packing Seat	1	16	Stud, Trigger	1	20A	Nut	1
7	Gun body	1	17	Trigger	1	20B	Packing	1
8	Spreader Adjusting Valve Set	1	18	Spring, Air Valve	1	20C	Valve Body	1
9	Gasket, (Air Valve / Bushing)	2	19	Air Valve	1	21	Nipple (Fluid Inlet, 3/8" NPS)	1
10	Housing	1	20	Air Valve Assembly (For SJ-111A)	1	22	Nipple (Air Inlet, 1/4" NPS)	1
11	Fluid Needle	1		20A Air Valve Packing Seat	1			
12	Spring (Needle)	1						



**PAINT POT DIAGRAM(2QT-B)**

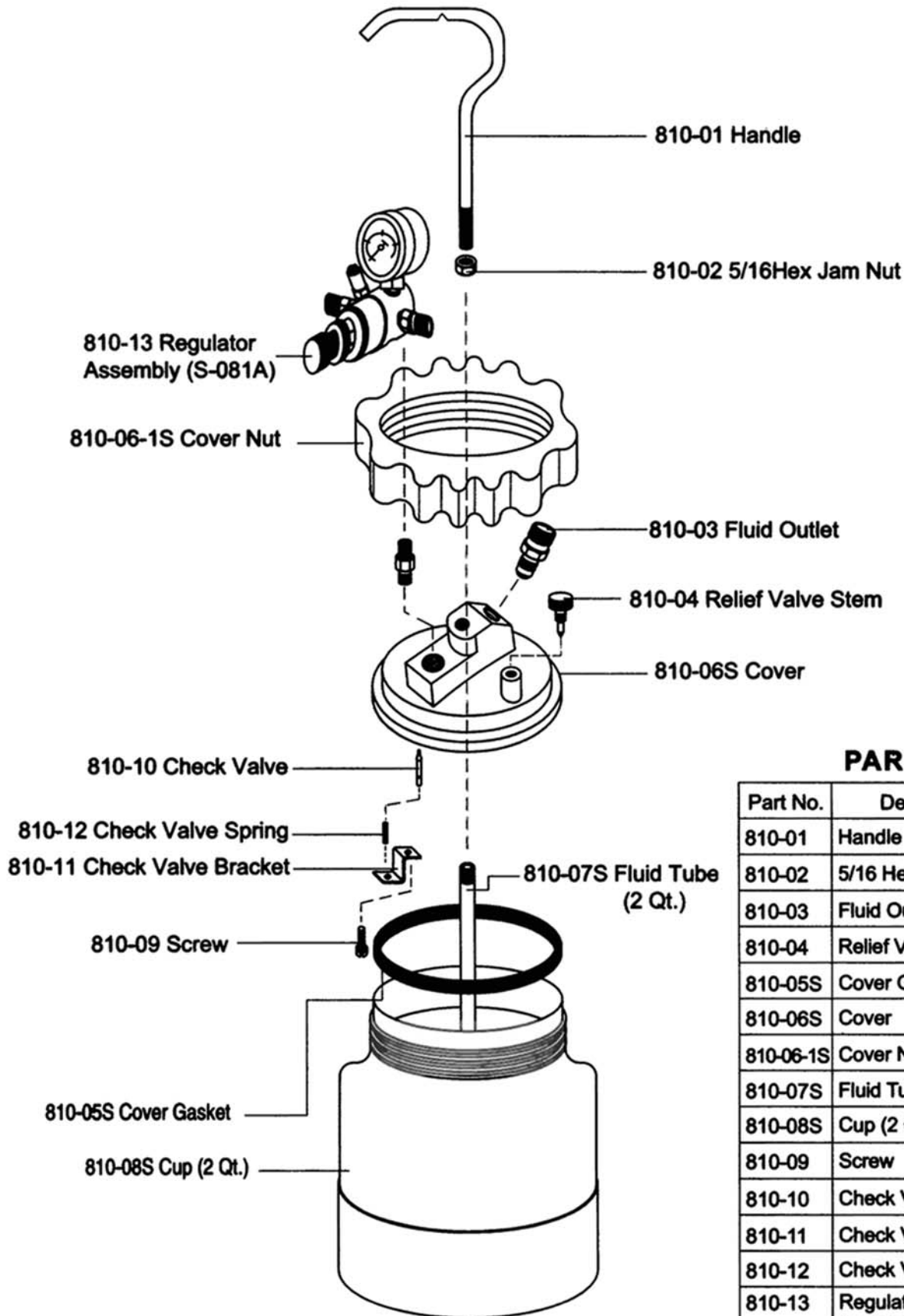


**PARTS LIST**

Part No.	Description	Qty.	Part No.	Description	Qty.
810-01	Handle .....	1	810-08B	Cup (2 Qt.) .....	1
810-02	5/16 Hex Jam Nut .....	1	810-09	Screw .....	1
810-03	Fluid Outlet .....	1	810-10	Check Valve .....	1
810-04	Relief Valve Stem .....	1	810-11	Check Valve Bracket .....	1
810-05B	Cover Gasket .....	1	810-12	Check Valve Spring .....	1
810-06B	Cover .....	1	810-13	Regulator Assembly (S-081A) ...	1
810-07B	Fluid Tube (2 Qt.) .....	1			



**PAINT POT DIAGRAM(2QT-S)**



**PARTS LIST**

Part No.	Description	Qty.
810-01	Handle	1
810-02	5/16 Hex Jam Nut	1
810-03	Fluid Outlet	1
810-04	Relief Valve Stem	1
810-05S	Cover Gasket	1
810-06S	Cover	1
810-06-1S	Cover Nut	1
810-07S	Fluid Tube (2 Qt.)	1
810-08S	Cup (2 Qt.)	1
810-09	Screw	1
810-10	Check Valve	1
810-11	Check Valve Bracket	1
810-12	Check Valve Spring	1
810-13	Regulator Assembly (S-081A)	1