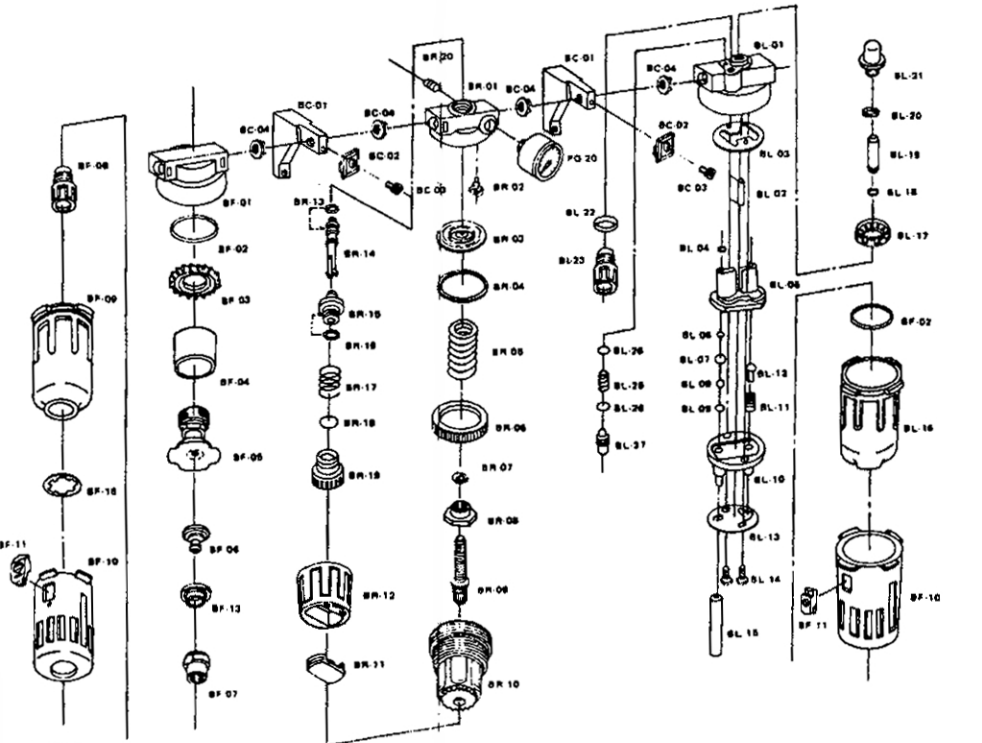


2615

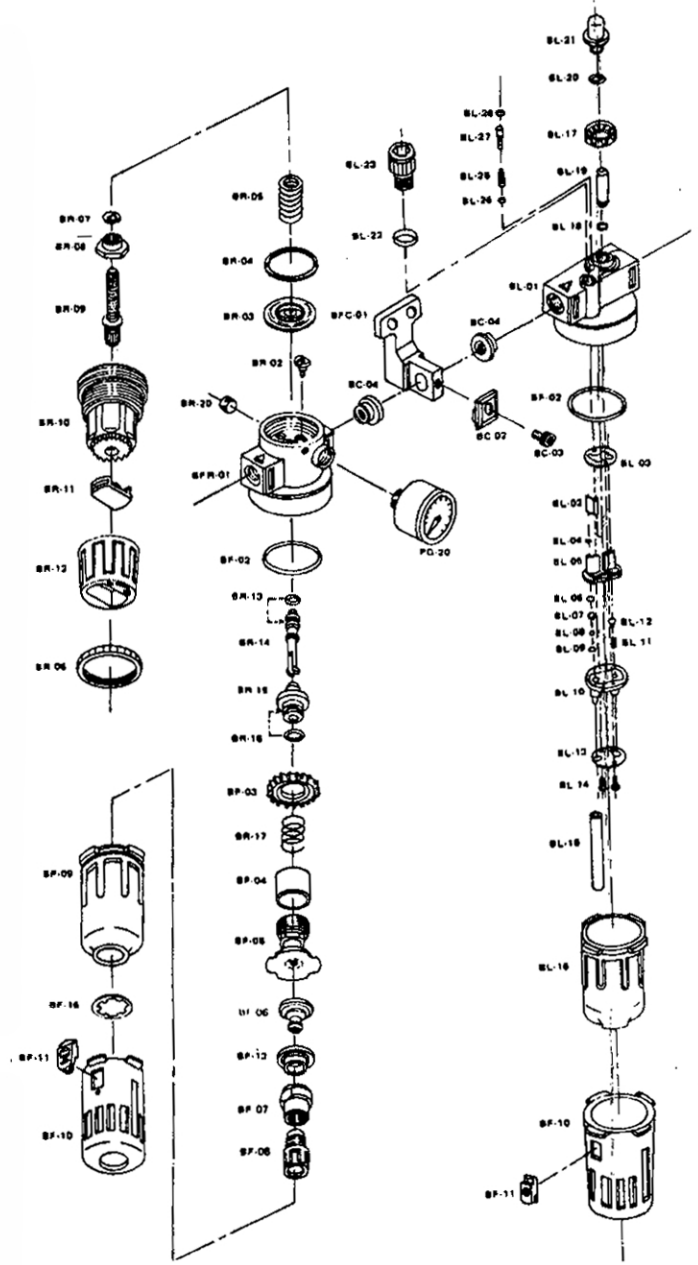
B 3/8" (1/4") AIR CONTROL UNIT

3/8" (1/4") PIGGYBACK AIR CONTROL UNIT



PARTS LIST

| Part No. | Description | Index No. | Part No. | Description | Index No. | Part No. | Description |
|----------|------------------|-----------|----------|----------------------|-----------|----------|------------------|
| BF-01 | Filter Body | 23 | BR-10 | Governor Socket | 45 | BL-11 | Spring |
| BF-02 | O-Ring | 24 | BR-11 | Push Button | 46 | BL-12 | Slack Adjustor |
| BF-03 | Spiral Baffle | 25 | BR-12 | Pressure Governor | 47 | BL-13 | Setting up piece |
| BF-04 | Filter Element | 26 | BR-13 | O Ring | 48 | BL-14 | Screw |
| BF-05 | Umbrella Baffle | 27 | BR-14 | Spool | 49 | BL-15 | Tube |
| BF-06 | Drain Cap | 28 | BR-15 | Spring Pressure Plug | 50 | BL-16 | Plastic Bowl |
| BF-07 | Drain Nut | 29 | BR-16 | O Ring | 51 | BL-17 | Adjusting Ring |
| BF-08 | Drain Screw | 30 | BR-17 | Spring | 52 | BL-18 | O-Ring |
| BF-09 | Plastic Bowl | 31 | BR-18 | O Ring | 53 | BL-19 | Drip Pipe |
| BF-10 | Bowl Guard | 32 | BR-19 | Valve Cap. | 54 | BL-20 | O-Ring |
| BF-11 | Push Button Key | 33 | BR-20 | Screw | 55 | BL-21 | Visi-Dome |
| BF-13 | Rubber | 34 | PG-20 | Pressure Gauge | 56 | BL-22 | O-Ring |
| BF-16 | Locking Ring | 35 | BL-01 | Lubricator Body | 57 | BL-23 | Filling Plug |
| BR-01 | Regulator Body | 36 | BL-02 | Distance Piece | 58 | | |
| BR-02 | Exhaust Nozzle | 37 | BL-03 | Packing | 59 | BL-25 | Spring |
| BR-03 | Pressure Packing | 38 | BL-04 | O Ring | 60 | BL-26 | O-Ring |
| BR-04 | Plastic Ring | 39 | BL-05 | Distance Block | 61 | BL-27 | Enjector Pin |
| BR-05 | Spring | 40 | BL-06 | O Ring | 62 | BC-01 | Mounting Bracket |
| BR-06 | Anchor Ring | 41 | BL-07 | Filter Leaf | 63 | BC-02 | Anchor Block |
| BR-07 | E-Ring | 42 | BL-08 | Ball Steel | 64 | BC-03 | Screw |
| BR-08 | Regulating Nut | 43 | BL-09 | O-Ring | 65 | BC-04 | Packing |
| BR-09 | Governor Spindle | 44 | BL-10 | Governor | 66 | | |



PARTS LIST

| Index No. | Part No. | Description |
|-----------|----------|-----------------------|
| 1 | BF-R-01 | Filter Regulator Body |
| 2 | BF-02 | O-Ring |
| 3 | BF-03 | Spiral Baffle |
| 4 | BF-04 | Filter Element |
| 5 | BF-05 | Umbrella Baffle |
| 6 | BF-06 | Drain Cap |
| 7 | BF-07 | Drain Nut |
| 8 | BF-08 | Drain Screw |
| 9 | BF-09 | Plastic Bowl |
| 10 | BF-10 | Bowl Guard |
| 11 | BF-11 | Push Button Key |
| 12 | BF-13 | Rubber |
| 13 | BF-16 | Locking Ring |
| 14 | BR-02 | Exhaust Nozzle |
| 16 | BR-03 | Pressure Packing |
| 18 | BR-04 | Plastic Ring |
| 17 | BR-05 | Spring |
| 18 | BR-06 | Anchor Ring |
| 19 | BR-07 | E-Ring |
| 20 | BR-08 | Regulating Nut |
| 21 | BR-09 | Governor Spindle |
| 22 | BR-10 | Governor Socket |
| 23 | BR-11 | Push Button |
| 24 | BR-12 | Pressure Governor |
| 25 | BR-13 | O-Ring |
| 26 | BR-14 | Spool |
| 27 | BR-15 | Pressure Plug |
| 28 | BR-16 | O-Ring |
| 29 | BR-17 | Spring |
| 30 | BR-20 | Screw |
| 31 | PG-20 | Pressure Gauge |
| 32 | BL-01 | Lubricator Body |
| 33 | BL-02 | Distance Piece |
| 34 | BL-03 | Packing |
| 35 | BL-04 | O-Ring |
| 36 | BL-05 | Distance Block |
| 37 | BL-06 | O-Ring |
| 38 | BL-07 | Filter Leaf |
| 39 | BL-08 | Ball Steel |
| 40 | BL-09 | O-Ring |
| 41 | BL-10 | Governor |
| 42 | BL-11 | Spring |
| 43 | BL-12 | Slack Adjustor |
| 44 | BL-13 | Setting up piece |
| 45 | BL-14 | Screw |
| 46 | BL-15 | Tube |
| 47 | BL-16 | Plastic Bowl |
| 48 | BL-17 | Adjusting Ring |
| 49 | BL-18 | O-Ring |
| 50 | BL-19 | Drip Pipe |
| 51 | BL-20 | O-Ring |
| 52 | BL-21 | Visi-Dome |
| 53 | BL-22 | O-Ring |
| 54 | BL-23 | Filling Plug |
| 55 | BL-25 | Spring |
| 56 | BL-26 | O-Ring |
| 57 | BL-27 | Enjector Pin |
| 58 | BFC-01 | Mounting Bracket |
| 59 | BC-02 | Anchor Block |
| 60 | BC-03 | Screw |
| 61 | BC-04 | Packing |

MANUAL 800102

View other air tools accessories made by Astro Pneumatic Tool on our website.