



Model:

200SLMAX

Product Type:

SUNLIGHT 2000 LUMEN RECHARGEABLE CORDLESS PROFESSIONAL COLOR MATCH FLOOD LIGHT



WARNING



Study, understand and follow all instructions provided with this product. Read these instructions carefully before installing, operating, servicing or repairing this tool. Keep these instructions in a safe accessible place.

DO NOT LOOK DIRECTLY INTO LIGHT SOURCE.



Astro Pneumatic Tool Company

INTENDED USE OF THE TOOL

The 200SLMAX color match light is designed to be used as a flood light for collision repair, detailing, paint correction and paint booth use. Do not use this tool outside of the designed intent. Never modify the tool for any other purpose or use.



PLEASE DO NOT RETURN ANY PRODUCT WITHOUT



Before Use

Before use, check the parts diagram and part number listing on page 2 to make sure all parts are included. If any parts are missing or damaged, please call your distributor.



WARNING



Caution: To help prevent personal injury avoid looking directly at light.

- Use of this product can expose you to chemicals including ethylene glycol, gasoline vapors and engine exhaust, which are known to the State of California to cause cancer, birth defects, or reproductive harm. For more information, visit www.P65Warnings.ca.gov. Always wear ANSI approved safety equipment, safety glasses and clothing when using this product. Study, understand, and follow all instructions provided with this product. Failure to read and follow all warnings and operating instructions may result in damages and serious injury or death.
- Always wear ANSI approved goggles when using this product. (Users and Bystanders).
- Never use this tool for any application other than for which it was designed.
- Only use accessories designed for this tool.
- Never alter or modify this tool in any way.
- Improper operation and/or maintenance of the tool, modification of the tool, or use of the tool with accessories not designed for it could result in serious injury or death.
- Always select the correct accessories of the correct size and design for the job that you are attempting to perform.
- Always work in a clean, safe, well-lit, organized and adequately equipped area.
- Do not begin repairs without assurance that vehicle is in secure position, and will not move during repair.

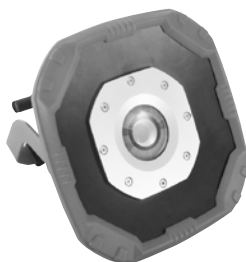
PRODUCT INFORMATION:

- Replicates the light quality of the Sun, achieving a high CRI of 96 - guaranteeing an accurate representation of surface colors and imperfections
- 2000 lumens of warm-white light operating at the 4000K color temperature range popular among painters and detailers
- Solid aluminum construction with rubber over-mold protection, IP65 water proof

SPECIFICATIONS:

Color Temperature : 4000K
 Water Proof : IP65
 Light Output : 700 - 2000 Lumens
 Battery Life : 2 - 6hrs
 Charge time : 3.5-4hrs
 Li-ion Rechargeable : 11.1V/4400 mAh

SUNLIGHT 2000 LUMEN RECHARGEABLE CORDLESS PROFESSIONAL COLOR MATCH FLOOD LIGHT



MADE IN CHINA

DO NOT DISCARD – GIVE TO USER



Model:

200SLMAX

Product Type:

SUNLIGHT 2000 LUMEN RECHARGEABLE CORDLESS PROFESSIONAL COLOR MATCH FLOOD LIGHT



WARNING



- 1) Avoid looking directly into the beam, as it can be blinding.
- 2) Don't use the lamp near open flames.
- 3) Do not disassemble.
- 4) Lamp gets hot after long use! Cool down the lamp before touching.
- 5) If lamp is stored for one month or more, fully charge it prior to storage.
- 6) Don't leave battery flat for excessive periods of time. Leaving the battery discharged can make recharging difficult.
- 7) The battery cannot be replaced.
- 8) The battery must be removed from the appliance before it is scrapped.
- 9) The appliance must be disconnected from the charger when removing the battery.
- 10) The battery should be disposed of safely.

NOTE

Before disposing of damaged goods, check with your state Environmental Protection Agency to find out about special restrictions on the disposal of the lamp and batteries or return them to a certified service center for recycling.

USING INSTRUCTIONS

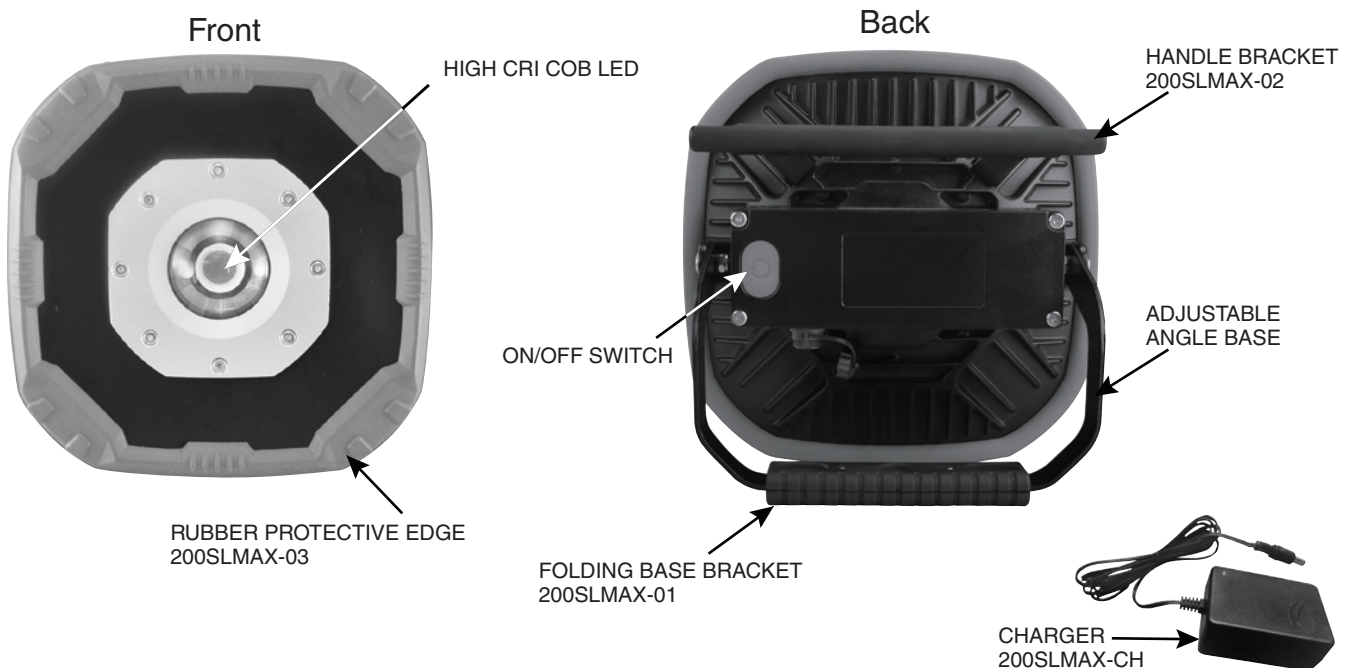
The ON/OFF switch is located on the back of the lamp :

- Press switch once: low brightness
- Press switch a second time: full brightness
- Press switch a third time: off

CHARGING PROCESS

- Never attempt to open for any reason.
- Do not store in locations where the temperature may exceed 40 °C.
- Charge only at ambient temperatures between 4 °C and 40 °C.
- Charge only using the charger provided with the tool.
- Do not cause short circuits. If connection is made between the positive (+) and negative (-) terminal directly or via accidental contact with metallic objects, the battery is short circuited and an intense current will flow causing heat generation which may lead to casing rupture or fire.
- Do not heat. If batteries are heated to above 100 °C, sealing and insulating separators and other polymer components may be damaged resulting in electrolyte leakage and/or internal short circuiting leading to heat generation causing rupture or file. Moreover do not dispose of the batteries in fire, explosion and/or intense burning may result.

PARTS BREAKDOWN



Learn more about portable work lights we have.