

Model # 1812



1/2" Super Duty Impact Wrench Twin Hammer

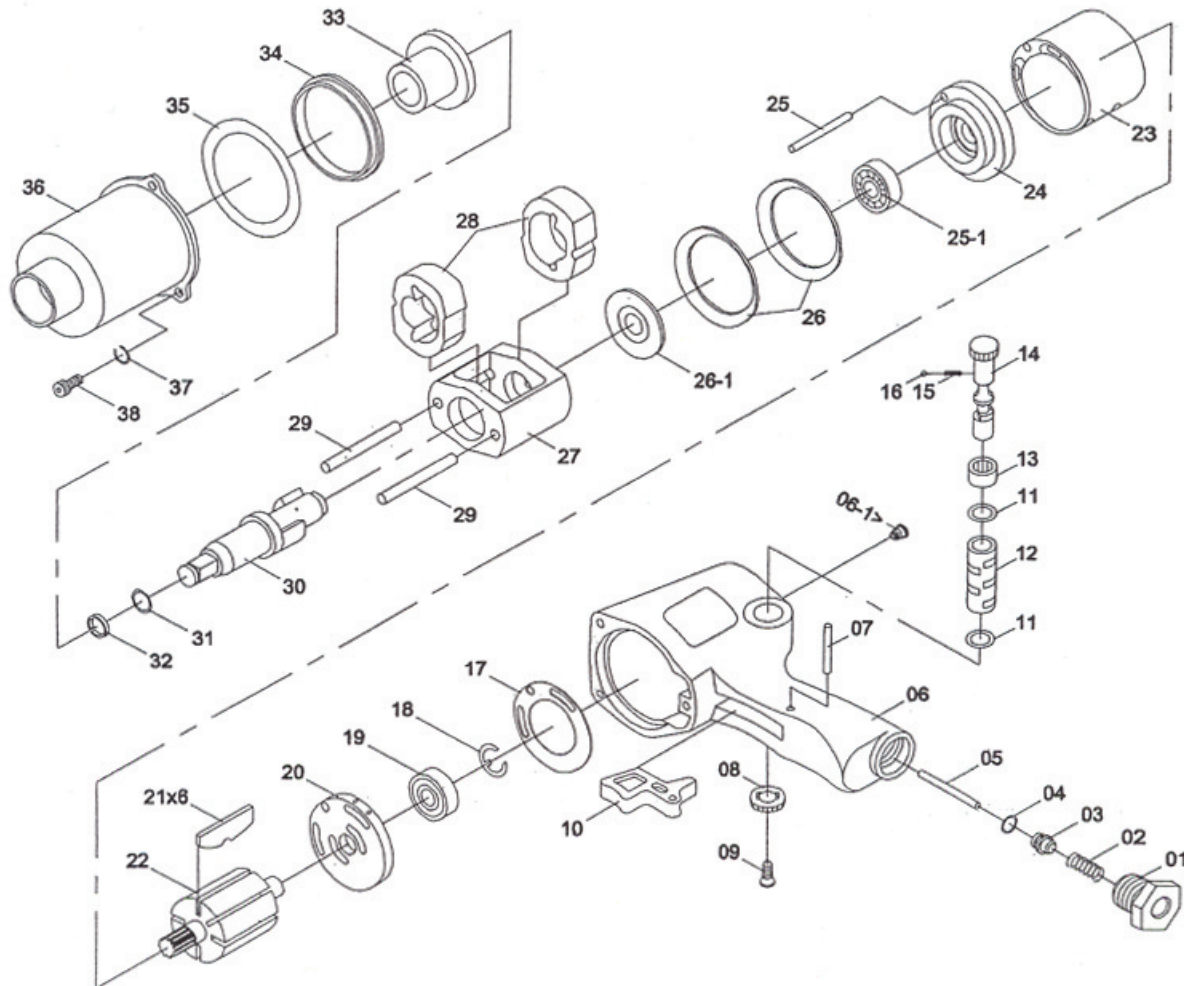


FEATURES:

- Ideal for general automotive work, light truck, farm, body shop, tire shop and front-end work
- Durable twin hammer impact mechanism
- Anvil and rotor made of a special alloyed steel that is heat treated to prevent chipping or breaking
- Steel hammer case provides maximum protection
- Two piece construction for easy maintenance
- Pressure feed lubrication system

Specifications:

Square Drive:	1/2"
Free Speed:	7,000rpm
Overall Length:	6-3/4" (172mm)
Net Weight:	5-3/5lbs. (2.60kg)
Max. Torque:	450ft./lbs.
Bolt Capacity:	9/16" (14mm)
Air Inlet Thread NPT:	1/4"
Air Hose I.D. Size:	3/8" (10mm)
Avg. Air Consumpt.:	4.20cfm
Air Pressure:	90-120psi
Sound Level:	102dB(A)
Vibration:	6.0M/S ²



INDEX NO.	PARTS NO.	DESCRIPTION	QTY	INDEX NO.	PARTS NO.	DESCRIPTION	QTY
01	111-00705	AIR INLET BUSHING	1	21	225-00102	ROTOR BLADE	6
02	113-00309	THROTTLE VALVE SPRING	1	22	610-00102	ROTOR	1
03	225-00402	THROTTLE VALVE	1	23	241-00102	CYLINDER	1
04	149-0030201	O-RING	1	24	543-00402	FRONT PLATE	1
05	111-00403	VALVE STEM	1	25	111-00408	GUIDE PIN	1
06	440-00105	MOTOR HOUSING	1	25-1	149-0010701	BALL BEARING	1
06-1	311-00901	GREASE FITTING	1	26	112-01302	CONICAL WASHER	2
07	111-00411	TRIGGER PIN	1	26-1	112-01306	HAMMER FRAME REAR SPACER	1
08	141-00703	REVERSE VALVE KNOB	1	27	543-00302	HAMMER CAGE	1
09	173-120512	SCREW	1	28	243-00202	HAMMER	2
10	225-00301	TRIGGER	1	29	111-00404	HAMMER PIN	2
11	149-00303	BUSHING SEAL	2	30	410-00302	ANVIL	1
12	111-00501	REVERSE VALVE BUSHING	1	31	149-00302	RETAINER O-RING	1
13	141-00501	DETENT BUSHING	1	32	113-00401	SOCKET RETAINER	1
14	111-00603	REVERSE VALVE	1	33	141-00603	ANVIL BUSHING	1
15	113-00307	DETENT SPRING	1	34	141-00601	HAMMER HOUSING PILOT RING	1
16	149-00201	DETENT BALL	1	35	130-01502	GASKET	1
17	130-01501	GASKET	1	36	312-01501	HAMMER HOUSING	1
18	113-00603	RETAINING RING	1	37	173-1100011	SPRING WASHER	3
19	149-00104	BALL BEARING	2	38	173-110001	SCREW	3
20	543-00502	REAR PLATE	1				