



MODEL:

# 1451

PRODUCT TYPE:

## 10" MICRO HAND RIVET NUT SETTER KIT



### WARNING



Study, understand and follow all instructions provided with this product. Read these instructions carefully before installing, operating, servicing or repairing this tool. Keep these instructions in a safe accessible place.

### INTENDED USE OF THE TOOL

This tool is intended to be used to install metric M5, M6, M8 and SAE 10-24, 1/4-20, 5/16-18 rivet nuts. Do not use this tool outside of the designed intent. Never modify the tool for any other purpose or use.



### WARNING



#### Caution: To help prevent personal injury

- Normal use of this product is likely to expose the user to dust and/or microscopic particles containing chemicals known to the State of California to cause cancer, birth defects or other reproductive harm. Always wear appropriate safety equipment and clothing when using this product. Study, understand and follow all instructions provided with this product. Failure to read and follow all warnings and operating instructions may result in damages and serious injury or death.
- Always wear ANSI approved goggles when using this product. (Users and By standers).
- Never use this tool for any application other than for which it was designed.
- Only use accessories designed for this tool.
- Never alter or modify this tool in any way.

### DRILL SIZE GUIDE

Metric

Nut Size	Drill Size
M5	7mm (9/32")
M6	9mm (3/8")
M8	11mm (7/16")

SAE

Nut Size	Drill Size
10-24	7mm (9/32")
1/4-20	9mm (3/8")
5/16-18	11mm (7/16")



## Astro Pneumatic Tool Company

### Before Use

When unpacking, check the parts diagram and part number listing on page 4 to make sure all parts are included. If any parts are missing or damaged, please call your distributor.

### PRODUCT INFORMATION:

- Compact 10" rivet nut setter with Toolless Quick-Change mandrel mandrel design
- Unique sliding head design pushes against the rivet nut flange to set rather than pulling the mandrel, for more leverage and easier consistency
- Includes mandrels, nosepieces and 10pc rivet nuts in: 10-24, 1/4-20, 5/16-18, M5, M6 and M8

### WHAT'S INCLUDED

- 10" sliding head rivet nut tool
- Mandrels and nosepieces in 10-24, 1/4-20, 5/16-18, M5, M6 and M8
- 10pc rivet nuts each size

### 10" MICRO HAND RIVET NUT SETTER KIT



**DO NOT DISCARD – GIVE TO USER**



MODEL:

# 1451

PRODUCT TYPE:

## 10" MICRO HAND RIVET NUT SETTER KIT



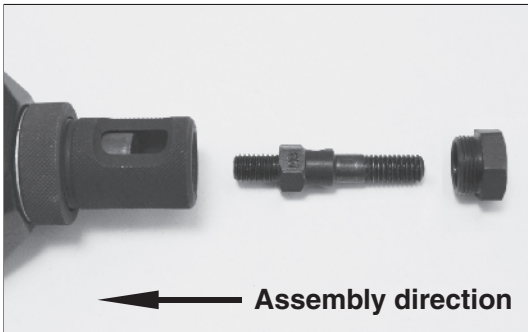
### WARNING



Always wear ANSI approved safety goggles when using this product (Users and Bystanders). Failure to read and follow all warnings and operating instructions may result in damages and serious injuries or death.

### OPERATING INSTRUCTIONS:

1. Choose the rivet nut size to be installed.
2. Install the correct size mandrel/nosepiece for the rivet nut to be installed. See photos and instructions for changing the mandrel/nosepiece and adjustment.
3. Drill a hole in the work product the same size or slightly larger than the outside diameter of the rivet nut to be installed.
4. To install the rivet nut, open the handles outward as far as possible and thread the rivet nut clockwise onto the mandrel until reaching the nosepiece.
5. Insert the rivet nut fastened to the riveter into the pre-drilled hole until flush with the work product, and pull handles inward to secure the rivet nut into the hole. If the rivet nut is loose in the hole, open the handles outward, turn #3 knob clockwise, and pull handles inward until the rivet nut is secure in the hole. Repeat as necessary until the rivet nut is secure in the hole. See adjustment instructions if necessary.
6. Turn the #3 knob counterclockwise until the mandrel is removed from the rivet nut. The rivet nut installation is complete if the rivet nut is secure from movement in the hole.



### CHANGING MANDREL/NOSEPIECE INSTRUCTIONS:

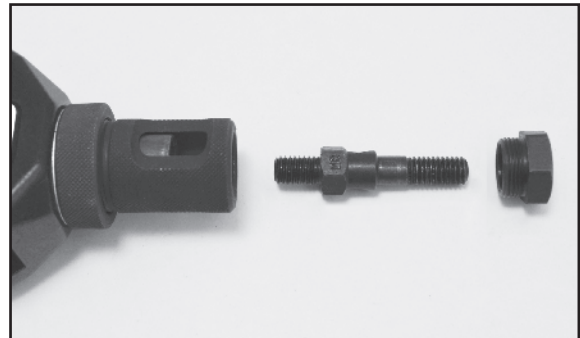
1. Remove and install the mandrel and nosepieces. Always keep the matched mandrel/nosepiece sets together.
2. Remove nosepiece from #16 sleeve by unthreading the nose piece counterclockwise. This can be done either by hand or with the provided wrench if too tight to do so.



3. Using your thumbnail or tool, press down to depress the #13 inner hexagonal sleeve that sits within the #16 outer sleeve. This should expose the lower hex portion of the mandrel.



4. Unthread the mandrel by hand to remove it from the sleeve. Once the mandrel has been threaded out far enough to clear the #13 hex sleeve you may release tension on this sleeve collar.
5. Choose the correct mandrel/nosepiece to be installed.



6. Thread the new mandrel into the tool by hand until it approaches the #13 hex sleeve and fully depress this sleeve to allow the mandrel to be threaded further until it stops. **The mandrel does not need to be torqued.** Release the hex sleeve and allow it to fully reengage the mandrel. If the mandrel and hex sleeve do not initially align, rotate the #19 knob while holding onto the mandrel until it clicks up and reengages.
7. Thread the matching nose piece into the #16 by hand. Torqueing the nose piece is optional.



MODEL:

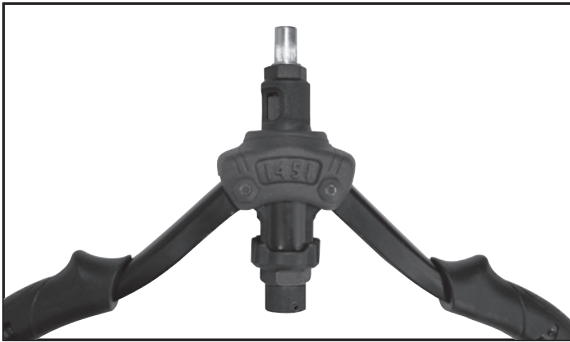
# 1451

PRODUCT TYPE:

## 10" MICRO HAND RIVET NUT SETTER KIT

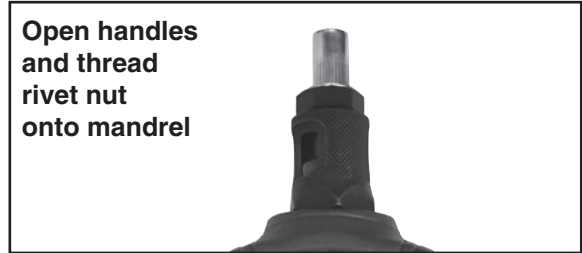
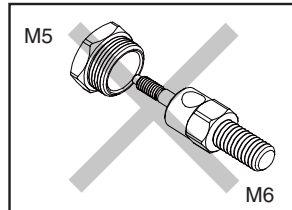
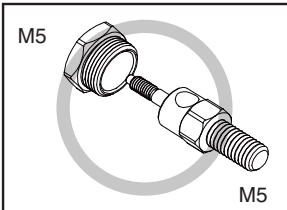
### Tips:

1. Always ensure that the mandrel is threaded into all threads of the rivet nut to prevent damage to the threads on the mandrel and/or the rivet nut.
2. If the handles are extended too far outward to provide enough leverage to pull the handles inward to set the rivet nut. Back the rivet nuts off 1-2 threads and allows the arms to move inwards a little more. Working the tool 2-3 times to set the rivet nut is not an issue if it's the most consistent way to install rivet nuts on your application.

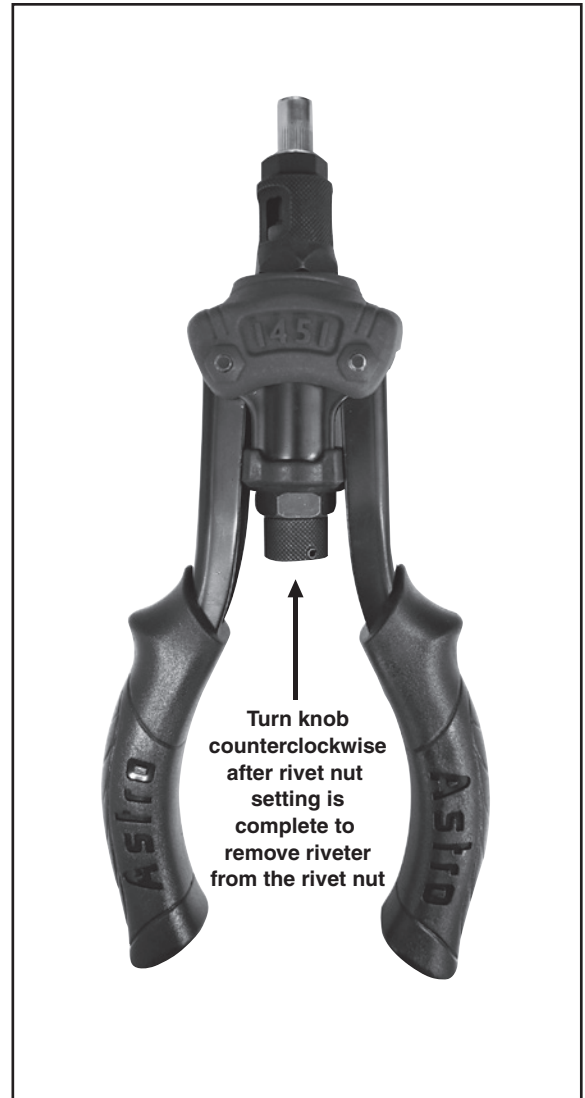


Riveter properly prepared for setting rivet nuts

**!** Store matching nosepieces and mandrels together when not in use to prevent mismatching the sizes and for convenience.

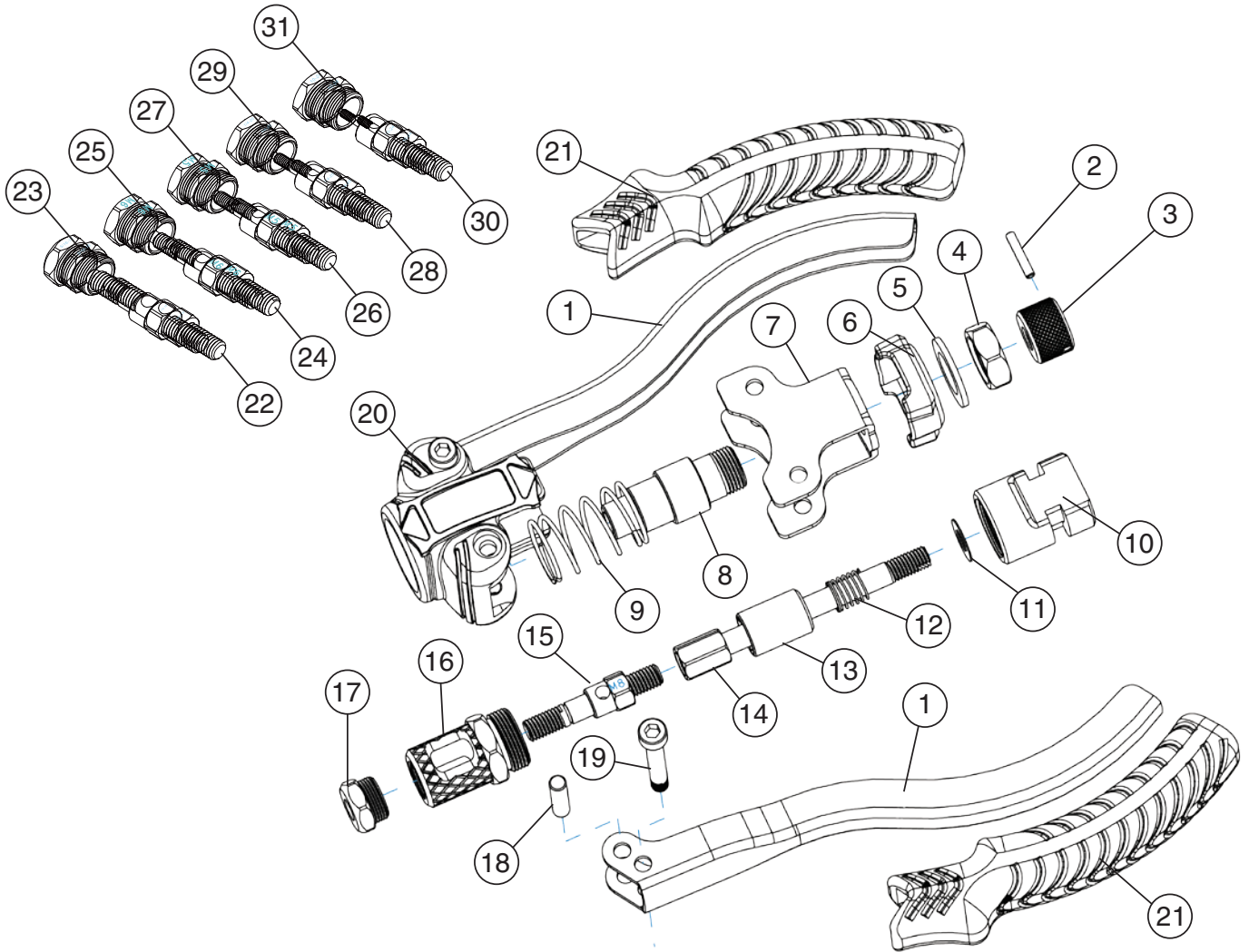


Open handles and thread rivet nut onto mandrel



Turn knob counterclockwise after rivet nut setting is complete to remove riveter from the rivet nut

## PARTS BREAKDOWN



### Parts List

Index	Part No.	Description	Qty	Index	Part No.	Description	Qty	Index	Part No.	Description	Qty
1	1451-01	Handle	2	13	1451-13	Fixed slide sleeve	1	25	1442-A29	M6 Nosepiece	1
2	1451-02	Spring pin3*18	1	14	1451-14	Pull rod	1	26	1442-A30	M5 Mandrel 5mmx0.8	1
3	1451-03	knurled nut	1	15	1442-A02	Mandrel M8	1	27	1442-A31	M5 Nosepiece	1
4	1451-04	Nut	1	16	1451-16	Sleeve	1	28	1442-A32	Mandrel 1/4-20	1
5	1451-05	Spacer	1	17	1442-A01	M8 Nosepiece	1	29	1442-A33	1/4-20 Nosepiece	1
6	1451-06	Plastic cover	1	18	1451-18	Pin rod	1	30	1442-A34	Mandrel 10-24	1
7	1451-07	U tape seat	1	19	1451-19	Screw	2	31	1442-A35	10-24 Nosepiece	1
8	1451-08	Fixed casing	1	20	1451-20	Outer skin	2				
9	1451-09	Spring	1	21	1451-21	Handle Sleeve	1				
10	1451-10	Movable seat	1	22	1442-A26	Mandrel 5/16-18	1				
11	1451-11	Spacer	1	23	1442-A27	5/16-18 Nosepiece	1				
12	1451-12	Spring		24	1442-A28	M6 Mandrel 6mmx1.0	1				

\* Additional accessories available:  
1442-10/32A 10-32 Mandrel & Nosepiece  
1442-8/32A 8-32 Mandrel & Nosepiece