



MODEL:

1422

PRODUCT TYPE:

PROFESSIONAL MICRO HAND RIVETER - 3/16" CAPACITY



WARNING



Study, understand and follow all instructions provided with this product. Read these instructions carefully before installing, operating, servicing or repairing this tool. Keep these instructions in a safe accessible place.

INTENDED USE OF THE TOOL

The tool was designed to set pop rivets of the following sizes: 3/32", 1/8", 5/32", 3/16". Do not use this tool outside of the designed intent. Never modify the tool for any other purpose or use.



WARNING



Caution: To help prevent personal injury

- Use of this product can expose you to chemicals including ethylene glycol, gasoline vapors and engine exhaust, which are known to the State of California to cause cancer, birth defects, or reproductive harm. Always wear ANSI approved safety equipment, safety glasses and clothing when using this product. Study, understand, and follow all instructions provided with this product. Failure to read and follow all warnings and operating instructions may result in damages and serious injury or death.
- Always wear ANSI approved goggles when using this product. (Users and Bystanders).
- Never use this tool for any application other than for which it was designed.
- Only use accessories designed for this tool.
- Never alter or modify this tool in any way.
- Improper operation and/or maintenance of the tool, modification of the tool, or use of the tool with accessories not designed for it could result in serious injury or death.
- Always select the correct accessories of the correct size and design for the job that you are attempting to perform.
- Always work in a clean, safe, well-lit, organized and adequately equipped area.
- Do not begin repairs without assurance that vehicle is in secure position, and will not move during repair.

PROFESSIONAL MICRO HAND RIVETER - 3/16" CAPACITY



MADE IN CHINA



Astro Pneumatic Tool Company

Before Use

When unpacking, check the parts diagram and part number listing on page 4 to make sure all parts are included. If any parts are missing or damaged, please call your distributor.

PRODUCT INFORMATION:

- At 8.5" long, is 20% shorter than standard 3/16" hand riveters
- Astro's torque multiplying lever design allows for higher pulling power with shorter arms
- Includes nosepieces for setting 3/32", 1/8", 5/32" and 3/16" blind rivets

SPECIFICATIONS:

Weight: 1 lb. (470g)
 Length: 8.66" (220mm)
 Max. Effective Working Stroke: 7mm

- Includes :
 3/32" Nosepiece
 1/8" Nosepiece
 5/32" Nosepiece
 3/16" Nosepiece

DO NOT DISCARD – GIVE TO USER



MODEL:

1422

PRODUCT TYPE:

PROFESSIONAL MICRO HAND RIVETER - 3/16" CAPACITY



WARNING



Always wear ANSI approved safety goggles when using this product (Users and Bystanders). Failure to read and follow all warnings and operating instructions may result in damages and serious injuries or death.

OPERATING INSTRUCTIONS:

1. Unlock the handles, where the handles are in the open position.



2. Install the appropriate sized nose piece according to the size pop rivet you are setting.
3. Drill an appropriate sized hole in the fixed work piece you are riveting into and squeeze the handles to set the rivet.

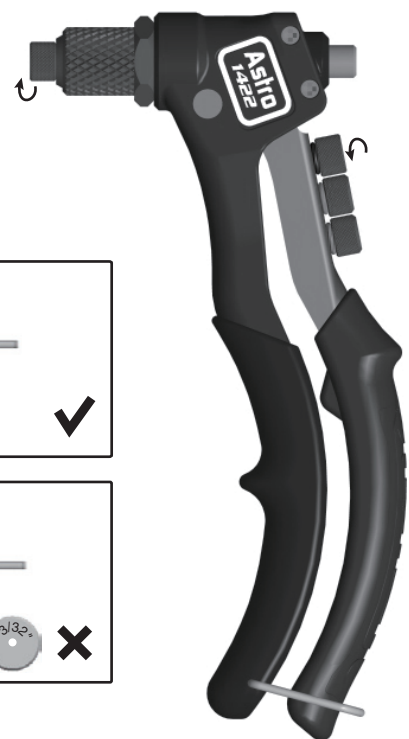
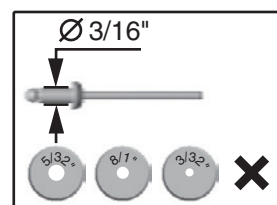
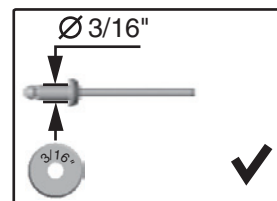


4. After setting the rivet in the work piece, release handles in the open position. It may take several pumps to set your rivet. Tilt the tool backwards after the rivet pops to expel the rivet stem from the rear of the tool.



TROUBLESHOOTING:

1. If rivet is not fitting properly in the tool, confirm that the size rivet and nosepiece match for proper function of the tool.





MODEL:

1422

PRODUCT TYPE:

**PROFESSIONAL MICRO HAND RIVETER
- 3/16" CAPACITY**

2. If the tool is consistently not releasing the spent rivet stem of your intended pop rivet, try using the next size up nosepiece making sure to monitor the nosepiece thereafter to ensure it is not galling with excess material.



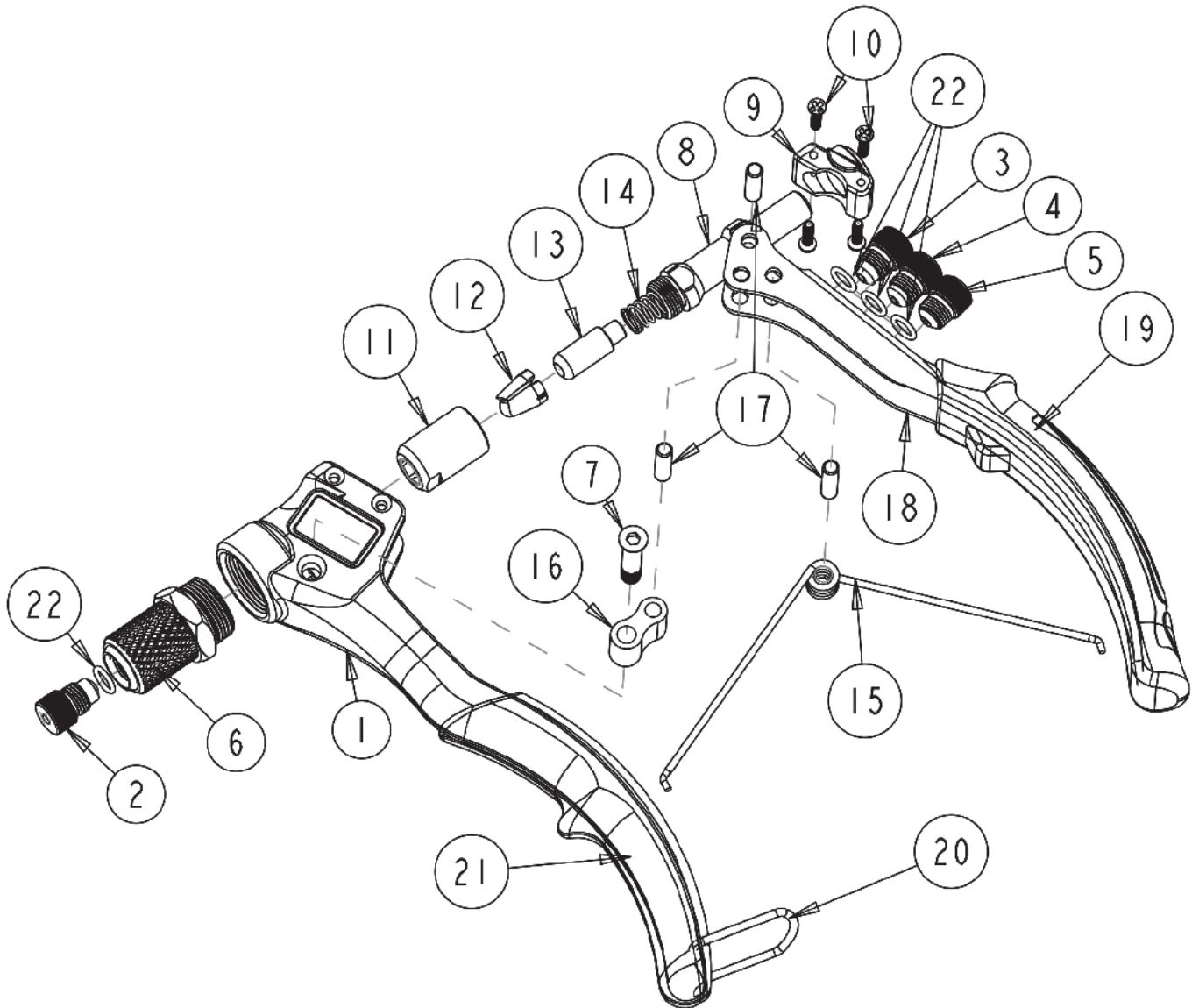
3. Open the handles and rivet stem should fall naturally out of the rear of the tool.



Note:

After completing the riveting, open the handles and if the rivet stem does not fall out of the rear naturally, first check that the nosepiece matches the rivet size. If the rivet and nosepiece both match in size, check if there is debris holding the stem in the tool at either the nosepiece or the rear exit port.

PARTS BREAKDOWN



Parts List

Index	Part No.	Description	Qty
1	1422-01	Handle	1
2	1422-02	3/16" Nosepiece	1
3	1422-03	5/32" Nosepiece	1
4	1422-04	1/8" Nosepiece	1
5	1422-05	3/32" Nosepiece	1
6	1422-06	Sleeve	1
7	1422-07	Screw	1
8	1422-08	Pull Rod	1
9	1422-09	Permanent Seat	1
10	1422-10	3*12 Screw	4
11	1422-11	3 Jaws Seat	1

Index	Part No.	Description	Qty
12	1422-12	3 Jaws	3
13	1422-13	Carrier Rod	1
14	1422-14	Spring	1
15	1422-15	Torsional Spring	1
16	1422-16	Catenation	1
17	1422-17	5*18 Pin Rod	3
18	1422-18	Top Handle	1
19	1422-19	Top Handle Sleeve	1
20	1422-20	Pothook	1
21	1422-21	Lower Handle Sleeve	1
22	1422-22	O-ring	4