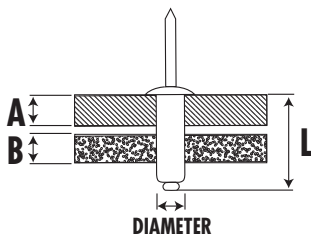




## ➤ HOW TO DETERMINE RIVET TYPE, DIAMETER AND GRIP RANGE

Rivets are available in steel and aluminum, in three diameters and in three grip ranges. Steel rivets are stronger than aluminum. Use steel rivets for heavy duty jobs and when riveting steel to steel. Use aluminum rivets for lighter weight jobs and materials such as aluminum, fabrics, plastics, leather, etc. Determine rivet diameter by strength needed for job. Determine rivet grip range by thickness of materials being fastened. Use washers when joining soft materials or when existing hole is oversize.

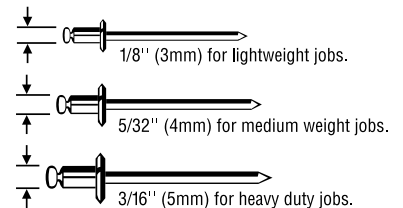
It is important to select the correct length for your rivet. The length of a rivet is measured from the underside of the head to the tip of the stem. The head itself is not included in this measurement.



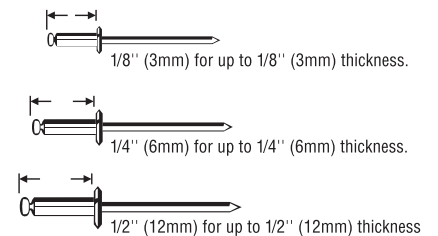
$$A+B+1.5(\text{DIAMETER})=L$$

The length of the rivet should be equal to the thickness of both objects you are fastening, plus 1.5 times the diameter of the rivet's stem.

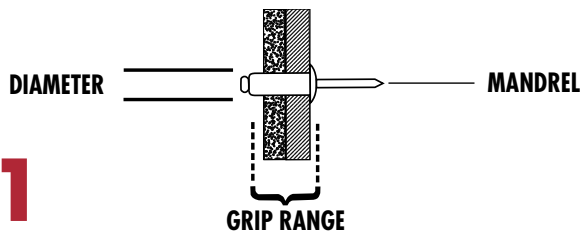
### DIAMETER



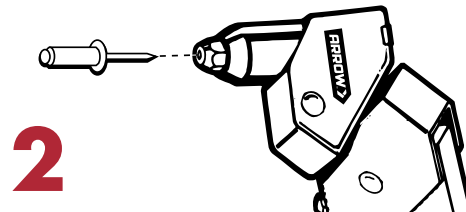
### GRIP RANGE



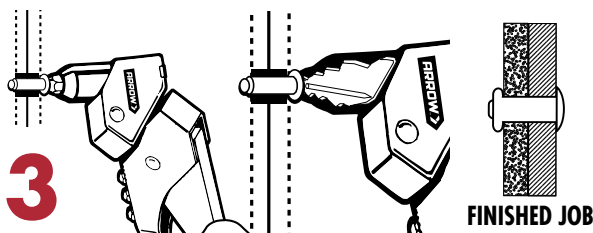
## ➤ RIVET IN 3 EASY STEPS



**1**  
SELECT RIVET WITH GRIP RANGE LARGER THAN THICKNESS OF MATERIALS TO BE FASTENED.  
DRILL HOLE SAME SIZE AS RIVET DIAMETER.




**2**  
SELECT CORRECT SIZE NOSEPIECE IN ACCORDANCE WITH RIVET DIAMETER. OPEN TOOL HANDLES AND INSERT RIVET.



**3**  
PLACE RIVET IN HOLE. SQUEEZE HANDLE TO PULL & CUT OFF EXCESS MANDREL (YOU MAY HAVE TO SQUEEZE MULTIPLE TIMES).

### RIVET

### GRIP RANGE

SHORT	1/8" (3MM)
MEDIUM	1/4" (6MM)
LONG	1/2" (12MM)
RIVET	HOLE SIZE 
1/8" (3MM)	1/8" (3MM)
5/32" (4MM)	5/32" (4MM)
3/16" (5MM)	3/16" (5MM)

# RIVETING TIPS & TRICKS

## How to clear a stuck mandrel

1. Pull rivet tool handle all the way open.
2. Hold rivet tool horizontally with nose pointed toward ceiling.
3. Insert new rivet, the stuck mandrel will fall out the back.

**Consider the diameter of the rivet.** Rivets must be fit exactly to the hole they are being installed in. It's important to find a rivet that's the same diameter as this hole. A rivet too large won't fit, while one too small will not fasten securely.

Stainless steel rivets are not for use with manually operated rivet tools.

## IDEAL FOR > HOME PROJECTS AND LIGHT DUTY PRO PROJECTS

### RL100™, RH200™ PROFESSIONAL & RHT300™ TWISTER PROFESSIONAL

For use in repairing lawn furniture, metal cabinets, aluminum doors and windows, cooking utensils and baking pans, pails, ironing boards, metal mailboxes, toys, power tools, bicycles, motor scooters, electrical fixtures; automobile add-ons and repairs; installing and repairing heating ducts, gutters and downspouts, air conditioners, TV antennas. Fasten metal to metal, canvas to canvas, canvas or leather to metal.



#### RL100

- > All steel construction
- > Comfortable vinyl grip
- > Spring-loaded handle for easy rivet loading and ejection
- > 2 nosepieces with wrench
- > Uses 3 rivet sizes: 1/8" (3mm), 5/32" (4mm) and 3/16" (5mm)



#### RH200

- > All steel construction
- > Comfortable vinyl grip
- > Spring-loaded handle for easy rivet loading and ejection
- > Extended nose for hard-to-get-at-places
- > Handle locks when not in use
- > 4 nosepieces with wrench
- > Uses 4 rivet sizes: 3/32" (2.5mm), 1/8" (3mm), 5/32" (4mm) and 3/16" (5mm)



#### RHT300

- > Rotates 360°
- > All steel construction
- > Comfortable vinyl grip
- > Spring-loaded handle for easy rivet loading and ejection
- > Extended nose for hard-to-get-at-places
- > Handle locks when not in use
- > 4 nosepieces with wrench
- > Uses 4 rivet sizes: 3/32" (2.5mm), 1/8" (3mm), 5/32" (4mm) and 3/16" (5mm)

**ARROW** >  
HOW IT ALL COMES TOGETHER

Discover other hand tools on our website.