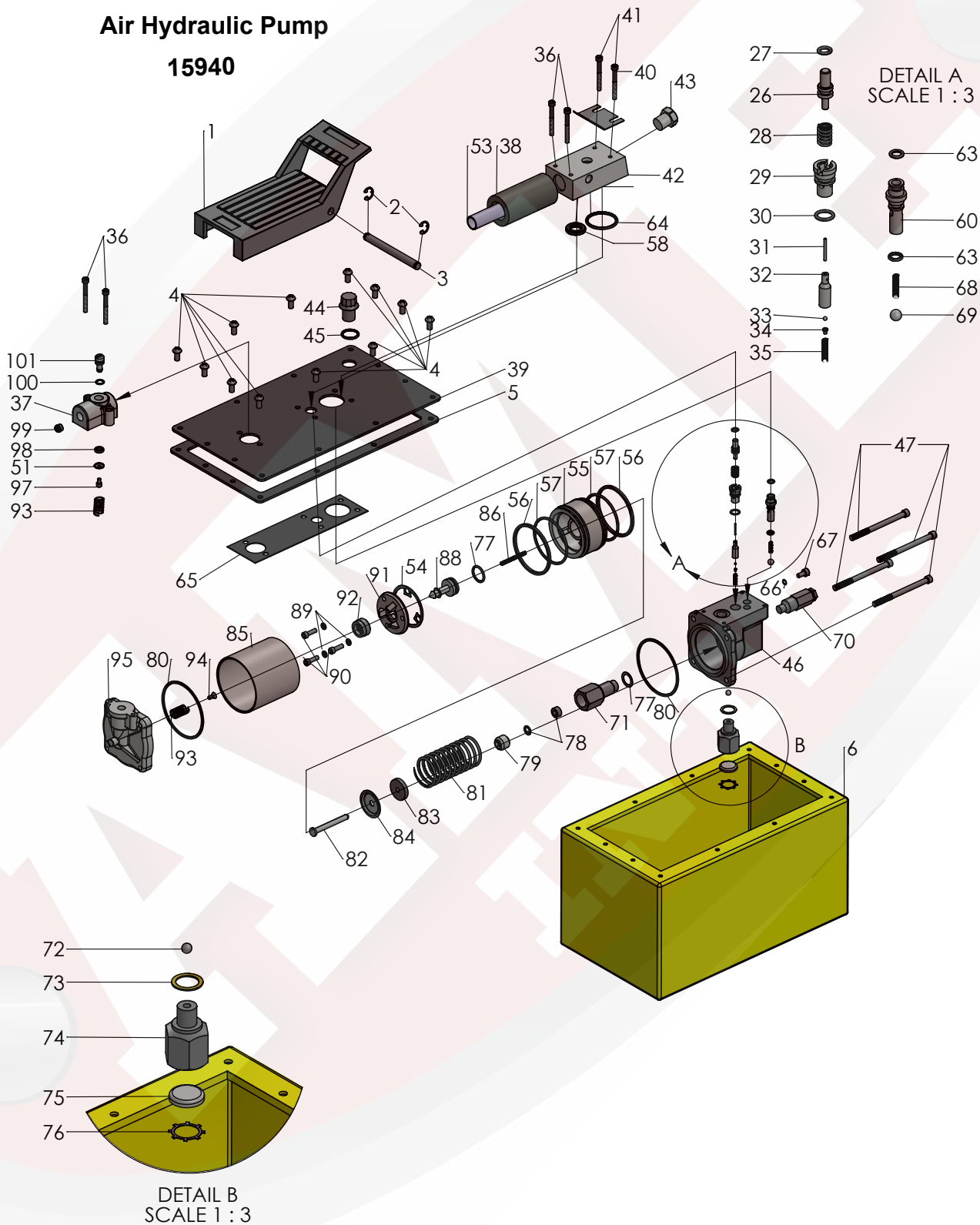




# PARTS BREAKDOWN

## Parts List For Air Hydraulic Pump 15940





# PARTS BREAKDOWN

## Parts List For

### Air Hydraulic Pump

15940

Item	Part No.	Stock No.	Qty	Description	Item	Part No.	Stock No.	Qty	Description
1	15940-001	41322	1	Foot Pedal	58	15940-058	*10276	1	O-Ring
2	15940-002	*11032	2	Retaining Ring	59	15940-059	*10272	1	O-Ring
3	15940-003	28386	1	Pin	60	15940-060	34378	1	Check Valve Body
4	15940-004	211060	6	Screw	61	15940-061	*250638	1	Filter Disc
5	15900-005	*33853	1	Reservoir Gasket	62	15940-062	*11088	2	Retaining Ring
5	15920-005	*46271	1	Reservoir Gasket	63	15940-063	*12522	2	O-Ring
5	15940-005	*47409	1	Reservoir Gasket	64	11010-015	*11841	1	O-Ring
6	15900-006	61243	1	Reservoir	65	15940-065	*351021	1	Gasket
6	15920-006	64153OR	1	Reservoir	66	11000-022	*10442	1	Washer
6	15940-006	61165	1	Reservoir	67	15940-067	10002	1	Cap Screw
7	15940-007	*305494	1	Decal	68	15940-068	*10445	1	Compression Spring
8	15940-008	302466	1	Spring Clip	69	15940-069	*10423	2	Steel Ball
9	15940-009	260154	1	Trade Name Decal	70	15940-070	-	-	Relief Valve
10	15940-010	251762	1	Warning Decal	71	15940-071	45278	1	Piston Cylinder
11	15920-004	211060	4	Screw	72	11010-014	*10375	1	Steel Ball
11	15940-004	252168	4	Screw	73	11010-019	*10261	1	Copper Washer
25	15940-025	*2066504	1	Foam Tube	74	15940-074	308893	1	Filter Adapter
26	15940-026	28227	1	Release Valve Button	75	15940-075	214578	1	Filter
27	15940-027	*10266	1	O-Ring	76	15940-076	214586	1	Retaining Ring
28	11010-013	*13944	1	Compression Spring	77	15940-077	*10263	1	Copper Washer
29	15940-029	34377	1	Poppet Retainer	78	15940-078	*13934	1	U-cup & Backup
30	15940-030	*15279	1	O-Ring	79	15940-079	*304295	1	Retainer
31	15940-031	13937	1	Dowel Pin	80	15940-080	*17429	2	Back up Washer
32	15940-032	29037	1	Release Valve Poppet	81	15940-081	*13938	1	Compression Spring
33	15940-033	*14443	1	Steel Ball	82	15940-082	28226	1	Piston
34	15940-034	209736	1	Ball Retainer	83	15940-083	203143	1	Bumper
35	15940-035	*13959	1	Compression Spring	84	15940-084	210994	1	Spring Guide
36	15940-036	11151	4	Cap Screw	85	15940-085	37434	1	Air Cylinder
37	15940-037	37199	1	Intake Air Valve Body	86	15940-086	*12692	1	Compression Spring
38	15940-038	*29992	1	Foam Tube	87	15940-087	*211052	1	O-Ring
39	15940-039	420965BK 2	1	Cover Plate	88	15940-088	305475	1	Exhaust Valve Stem
39	15940-039	58688BK2	1	Cover Plate	89	15940-089	*10241	3	Lock washer for #10 Bolt
39	15940-039	58706BK2	1	Cover Plate	90	15940-090	211054	3	Screw
40	15940-040	11089	2	Washer	91	15940-091	33822	1	Piston End Plate
41	15940-041	11435	2	Cap Screw	92	15940-092	*28183	1	Piston Poppet
42	15940-042	58563	1	Release Valve Body	93	15940-093	*205679	1	Compression Spring
43	15940-045	11127	1	Pressure Plug	94	15940-094	*205674	1	Screw
44	-	20937	1	Filler Cap	95	15940-095	51480	1	Rear Head
45	15940-045	*10273	1	O-Ring	96	15940-096	12691	1	Compression Spring
46	15940-046	64767	1	Pump Body	97	15940-097	13936	1	Soc. Hd Cap Screw
47	15940-047	17428	4	UNC x3-1/2	98	15940-098	28198	1	Seal Guide
51	15940-051	*28182	1	Air Valve Poppet	99	15940-099	*216296	1	Filter Disc



# PARTS BREAKDOWN

## Parts List For

Air Hydraulic Pump

15940

52	15940-052	*251717	1	O-Ring	100	15940-100	*10267	1	O-Ring
53	15940-053	28387	1	Muffler					
54	15940-054	*28239	1	Gasket					
55	15940-055	52390	1	Piston Body					
56	15940-056	*14265	2	Piston Ring					
57	15940-057	*251835	2	O-Ring					