

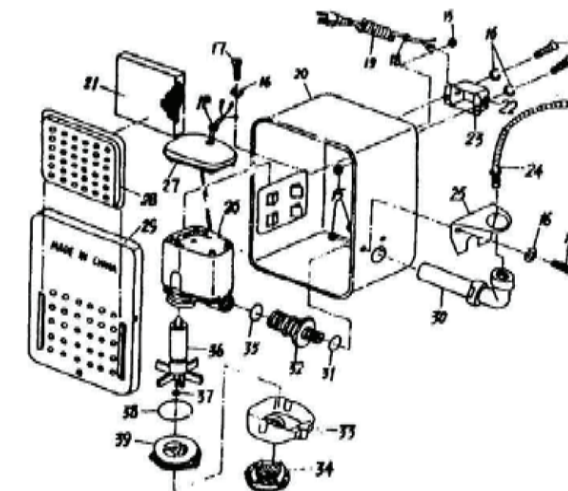
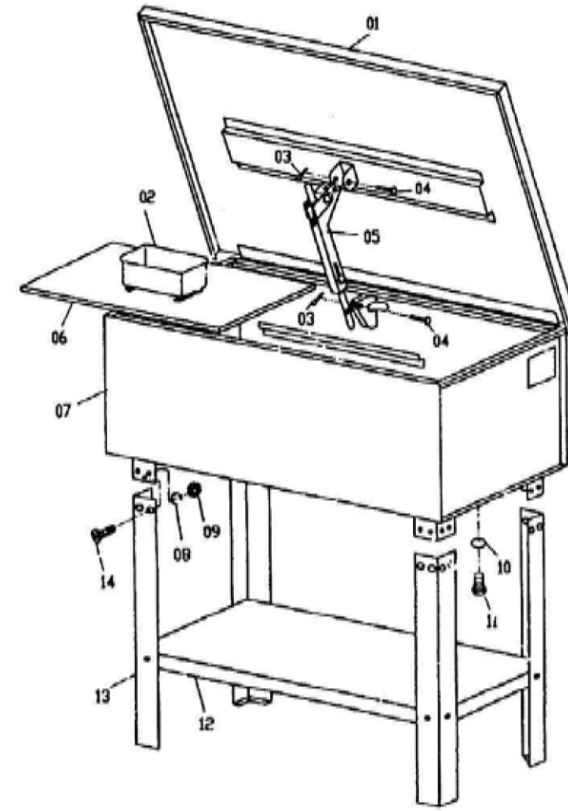


# Operation MANUAL

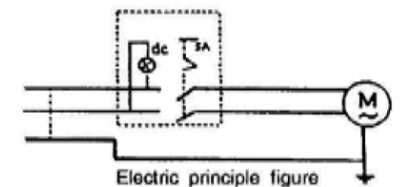
## 40 Gallon Parts Washer – Heavy Duty



Product No. 31400B



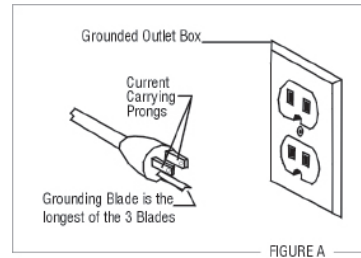
PARTS NO	DESCRIPTION	QTY
01	COVER	1
02	WORK BASKET	1
03	SPRING PAN	4
04	PIN	4
05	SAFETY PLATE	1
06	WORK SHELF	1
07	BODY	1
08	SPRING WASHER	24
09	NUT	24
10	O-RING	1
11	PLUG	1
12	SHELF	1
13	LEG	4
14	PAN SCREW	24
15	NUT	5
15	SPRING WASHER	5
17	SCREW	5
18	STRAIN RELIEF	2
19	CABLE AND PLUG	1
20	PUMP HOUSING	1
21	SCREEN	1
22	SWITCH	1
23	SWITCH BOX	1
24	FLEXIBLE PIPE	1
25	ELBOW SEAT	1
26	PUMP BODY	1
27	PUMP BACK COVER	1
28	FILTER COVER	1
29	PUMP HOUSING COVER	1
30	ELBOW	1
31	PLASTIC WASHER	1
32	SPIGOT	1
33	LOCATION OF KNOB	1
34	FILTER	1
35	SEALRING	1
36	IMPELLER	1
37	SHIN WASHER	2
38	SEALRING	1
39	IMPELLER HOLDER	1





## Assembly Instructions

1. Remove machine from carton and inspect for any visual damage.
2. Remove parts inside the machine.
3. Lay clean and hard cardboard on floor and lay machine on its lid. (Make sure you hold cover closed when laying machine on its lid.)
4. Mount four legs on brackets with M6 X 12 Philips head screws and M6 keps nuts.  
**NOTE: DO NOT TIGHTEN**
5. Place lower shelf between legs with flat surface up and attach to legs with M6 X 12 Philips head screws and M6 keps nuts.
6. With legs pressed tight against lower shelf, tighten all screws to lower shelf.
7. Tighten all the screws installed in step 4.
8. Stand machine up, be careful to hold lid closed.
9. Put work shelf and basket into the machine.
10. Mount pump assembly into slot on the side of the tank and fasten to the tank using the two Philips head screws installed in the flange on the lower part of the switch housing, then place filter screen in position.
11. Plug machine into standard 115 volt 60 Hz grounded outlet as shown in *Figure A*.
12. Fill with no more than 22 Gallons of cleaning fluid.
13. Turn switch on. Fluid should now be flowing from the flexible spigot.



## Specifications

Overall Dimensions	45-1/4" x 22" x 35"
Tank Dimensions	44-5/8" x 21-1/2" x 12-1/2"
Maximum Solvent Capacity	40 Gallons*
Working Capacity	22 Gallons
Max Pump Output Through Spigot	20L/min
Electrical Requirements	115 Volt / 60Hz / 0.5 Amp
Product Weight	99 lbs.

\* DO NOT FILL TO MAXIMUM CAPACITY, FILL ONLY TO WORKING CAPACITY OF 22 GALLONS



## Cleaning Solutions

Aqueous-based cleaning solution only.

### WARNING

The pump of your Parts Washer may be damaged if you use solvents other than those listed above such as methyl ethyl ketone (MEK), Perchloroethylene or trichloroethylene.



## Trouble Shooting

The only trouble you should ever experience with your Parts Washer is reduced volume flow or no flow of cleaning liquid from the flex hose nozzle. The probable cause is foreign matter in the flex hose.

## Corrective Procedure

1. Check if indicator light on switch box is lit.
2. Using an insulated handle screwdriver, lightly touch tip of housing of motor. A light oscillation magnetic pull indicates power is reaching the motor.
3. Disconnect power plug, remove flex hose from pump flow-out line.
4. Remove front of pump housing by removing 3 screws. Clean any foreign matter lodged around impeller.
5. Reassemble in reverse order.

### WARNING

1. Do not smoke near Parts Washer
2. Do not use Parts Washer near an open flame
3. Use only in a well ventilated area

Do not fill to maximum tank capacity  
Fill only to 22 Gallons working capacity



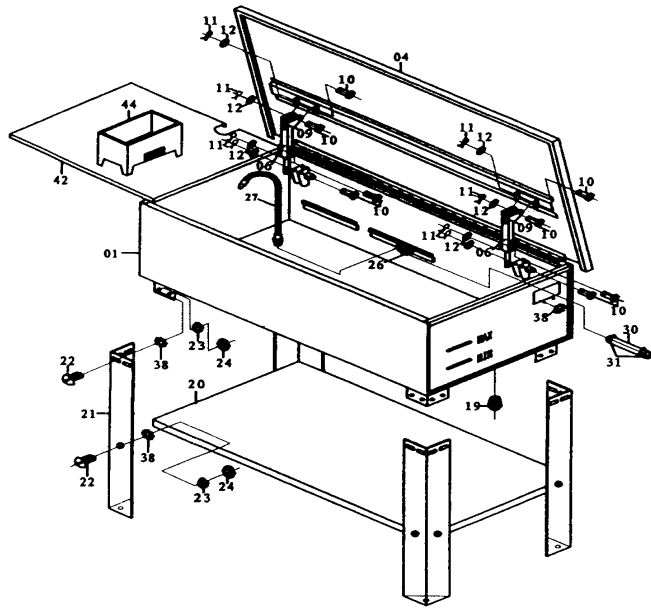


# MODEL 31400 - 40 GALLON INDUSTRIAL PARTS WASHER

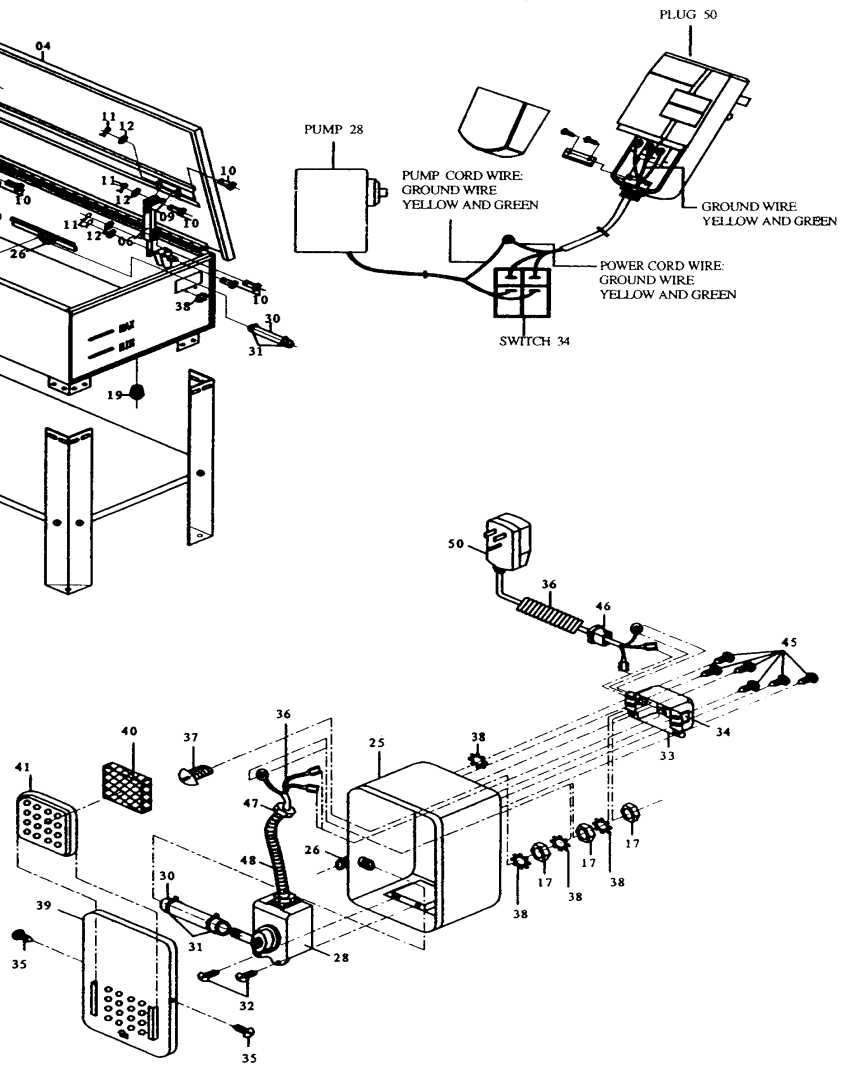
UPDATED 7-05

PART ORDER NUMBER	KIT DESCRIPTION	KIT INCLUDES	
		REF.#	DESCRIPTION
31400K27		27	FLEXIBLE PIPE
31400KA		28	PUMP
31400K34		34	SWITCH
31200AK06		6	SAFETY LEVER ea. (2 required)
31200AK40		40	SCREEN
31400K50		50	PLUG with GFCI
31400KHW		22	BOLT X 24
		23	SPRING WASHER X 24
		24	NUT X 24
		38	STAR WASHER X 10
		45	TAPPING SCREW X 10
31400K25A	PUMP, HOUSING	17	NUT
	MOTOR, CORD W/ GFCI	25	PUM HOUSING
		26	ELBOW
		28	PUMP
		30	HOSE
		31	HOSE CLAMP
		32	TAPPING SCREW
		33	SWITCH BOX
		34	SWITCH
		35	TAPPING SCREW
		36	POWER CORD
		37	PAN SCREW
		38	STAR WASHER
		39	PUMP HOUSING COVER
		40	SCREEN
		41	COVER
		45	TAPPING SCREW
		46	FEED THRU
		47	NUT
		48	FLEXIBLE PIPE
		50	PLUG W/GFCI
NOT AVAILABLE		1	TANK
NOT AVAILABLE		2	COVER
NOT AVAILABLE		4	BOLT
NOT AVAILABLE		9	SAFETY PLATE
NOT AVAILABLE		10	PIN
NOT AVAILABLE		11	SPRING PIN
NOT AVAILABLE		12	WASHER
NOT AVAILABLE		17	NUT
NOT AVAILABLE		19	PLUG
NOT AVAILABLE		20	SHELF
NOT AVAILABLE		21	LEG
NOT AVAILABLE		25	PUMP HOUSING
NOT AVAILABLE		26	ELBOW
NOT AVAILABLE		30	HOSE
NOT AVAILABLE		31	HOSE CLAMP
NOT AVAILABLE		32	TAPPING SCREW
NOT AVAILABLE		33	SWITCH BOX
NOT AVAILABLE		35	TAPPING SCREW
NOT AVAILABLE		36	POWER CORD
NOT AVAILABLE		37	PAN SCREW
NOT AVAILABLE		39	PUMP HOUSING COVER
NOT AVAILABLE		40	SCREEN
NOT AVAILABLE		41	COVER
NOT AVAILABLE		42	WORK SHELF
NOT AVAILABLE		44	BASKET
NOT AVAILABLE		46	FEED THRU
NOT AVAILABLE		47	NUT
NOT AVAILABLE		48	FLEXIBLE PIPE

# MODEL 31400 - PARTS WASHER EXPLODED VIEW



## Wiring Diagram



**\* ONLY PARTS WITH A "PART ORDER NUMBER" ARE AVAILABLE.**

**DO NOT COPY OR DISTRIBUTE THIS MATERIAL WITHOUT PERMISSION OF AFF, INC.**



**AMERICAN FORGE & FOUNDRY, INC.™**

## 40 - Gallon Parts Washer

Model 31400

AFF Parts Washers are designed for fast and efficient cleaning of vehicle parts and subassemblies.

All have durable baked enamel finishes and fusible-linked fire covers for safety (always wear the appropriate face and hand protection when using a parts cleaner). Our complete line of parts washers and accessories are designed for use with water-based cleaners (aqueous) for faster, more efficient cleaning.

- 22-gallon working capacity
- 50 GPH pump output
- Safety GFCI plug at 110V/0.5A
- Removable work shelf and parts basket
- Comes with model PWBRUSH Flo-thru parts cleaning brush
- UL Listed on complete unit
- 45" x 21-1/4" x 35-5/8" overall dimensions
- Ship weight 107 lbs.



### RELATED PRODUCTS



**Model 31200A**  
20 Gallon Parts Washer



**Model 8622A**  
50:1 Air Operate Grease Unit



**Model 8895**  
24 Gallon Waste Oil Drain / Evac.

If you're looking for quality cleaning and janitorial made by AFF, we've you covered.