

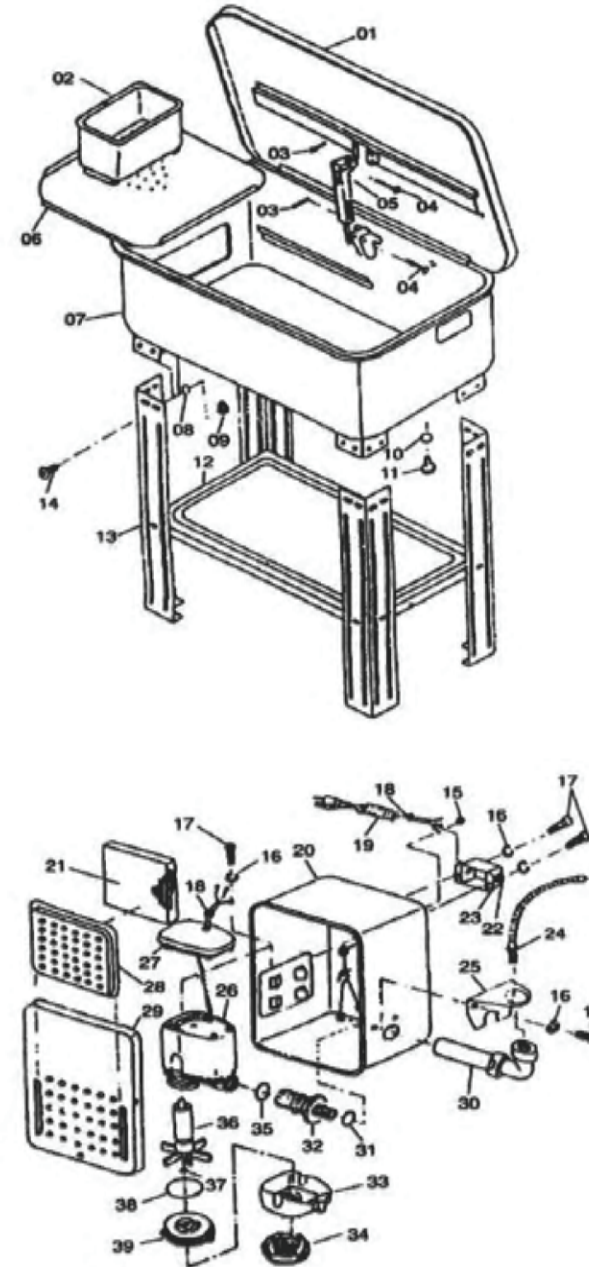


# Operation MANUAL

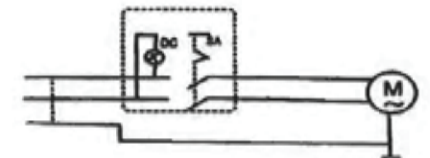
## 20 Gallon Parts Washer – Heavy Duty



Product No. 31200B



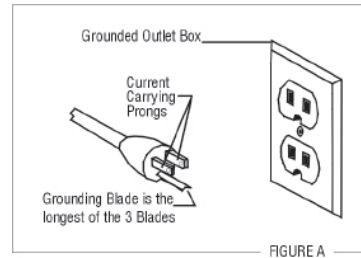
PARTS NO	DESCRIPTION	QTY
01	COVER	1
02	WORK BASKET	1
03	SPRING PAN	4
04	PIN	4
05	SAFETY PLATE	1
06	WORK SHELF	1
07	BODY	1
08	SPRING WASHER	24
09	NUT	24
10	O-RING	1
11	PLUG	1
12	SHELF	1
13	LEG	4
14	PAN SCREW	24
15	NUT	5
16	SPRING WASHER	5
17	SCREW	5
18	STRAIN RELIEF	2
19	CABLE AND PLUG	1
20	PUMP HOUSING	1
21	SCREEN	1
22	SWITCH	1
23	SWITCH BOX	1
24	FLEXIBLE PIPE	1
25	ELBOW SEAT	1
26	PUMP BODY	1
27	PUMP BACK COVER	1
28	FILTER COVER	1
29	PUMP HOUSING COVER	1
30	ELBOW	1
31	PLASTIC WASHER	1
32	SPIGOT	1
33	LOCATION OF KNOB	1
34	FILTER	1
35	SEAL RING	1
36	IMPELLER	1
37	THIN WASHER	2
38	SEAL RING	1
39	IMPELLER HOLDER	1





## Assembly Instructions

1. Remove machine from carton and inspect for any visual damage.
2. Remove parts inside the machine.
3. Lay clean and hard cardboard on floor and lay machine on its lid. (Make sure you hold cover closed when laying machine on its lid.)
4. Mount four legs on brackets with M6 X 12 Philips head screws and M6 keps nuts.  
**NOTE: DO NOT TIGHTEN**
5. Place lower shelf between legs with flat surface up and attach to legs with M6 X 12 Philips head screws and M6 keps nuts.
6. With legs pressed tight against lower shelf, tighten all screws to lower shelf.
7. Tighten all the screws installed in step 4.
8. Stand machine up, be careful to hold lid closed.
9. Put work shelf and basket into the machine.
10. Mount pump assembly into slot on the side of the tank and fasten to the tank using the two Philips head screws installed in the flange on the lower part of the switch housing, then place filter screen in position.
11. Plug machine into standard 115 volt 60 Hz grounded outlet as shown in *Figure A*.
12. Fill with no more than 11 Gallons of cleaning fluid.
13. Turn switch on. Fluid should now be flowing from the flexible spigot.



## Specifications

Overall Dimensions	30-3/4" x 21-1/4" x 35-3/4"
Tank Dimensions	29-7/8" x 20-3/4" x 10-8/10"
Maximum Solvent Capacity	20 Gallons*
Working Capacity	11 Gallons
Max Pump Output Through Spigot	10/12:1/min
Electrical Requirements	115 Volt / 60Hz / 0.5 Amp
Product Weight	62 lbs.

\* DO NOT FILL TO MAXIMUM CAPACITY, FILL ONLY TO WORKING CAPACITY OF 11 GALLONS



## Cleaning Solutions

Aqueous-based cleaning solution only.

### WARNING

The pump of your Parts Washer may be damaged if you use solvents other than those listed above such as methyl ethyl ketone (MEK), Perchloroethylene or trichloroethylene.



## Trouble Shooting

The only trouble you should ever experience with your Parts Washer is reduced volume flow or no flow of cleaning liquid from the flex hose nozzle. The probable cause is foreign matter in the flex hose.

## Corrective Procedure

1. Check if indicator light on switch box is lit.
2. Using an insulated handle screwdriver, lightly touch tip of housing of motor. A light oscillation magnetic pull indicates power is reaching the motor.
3. Disconnect power plug, remove flex hose from pump flow-out line.
4. Remove front of pump housing by removing 3 screws. Clean any foreign matter lodged around impeller.
5. Reassemble in reverse order.

### WARNING

1. Do not smoke near Parts Washer
2. Do not use Parts Washer near an open flame
3. Use only in a well ventilated area

Do not fill to maximum tank capacity  
Fill only to 11 Gallons working capacity





# MODEL 31200A - 20 GALLON PARTS WASHER

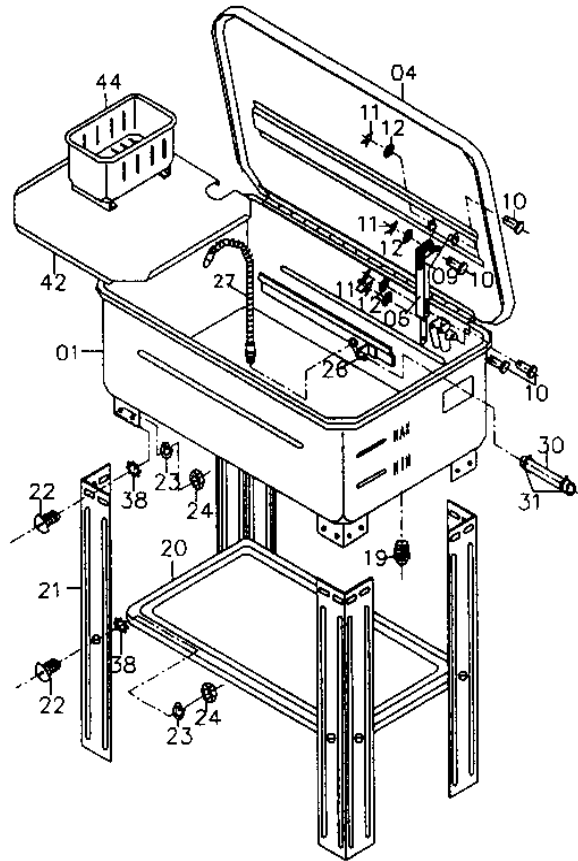
UPDATED 07-05

PART ORDER NUMBER	KIT DESCRIPTION	KIT INCLUDES	
		REF.#	DESCRIPTION
31200AK27	FLEX PIPE	27	FLEXIBLE PIPE
31200AK28	PUMP	28	PUMP
31200AK34	SWITCH	34	LIGHT SWITCH
31200AK40	FILTER	40	SCREEN
31200AK06	SAFTEY LEVER	6	SAFETY LEVER
31200AK50	GFCI	46	FEED THRU
		36	POWER CORD
		50	PLUG with GFCI
31200AKHW	HARDWARE PACKAGE	22	BOLTS (24)
		23	LOCK WASHERS (24)
		24	HEX NUT (24)
31200AK25A	PUMP, HOUSING	17	NUT
	MOTOR & CORD	25	PUMP HOUSING
	W/ GFCI	26	ELBOW
		28	PUMP
		30	HOSE
		31	HOSE CLAMP
		32	RAPPING SCREW
		33	SWITCH BOX
		34	LIGHT SWITCH
		35	TAPPING SCREW
		36	POWER CORD
		37	PAN SCREW
		38	STAR WASHER
		39	PUMP HOUSING
		40	SCREEN
		41	SCREEN COVER
		45	TAPPING SCREW
		46	FEED THRU
		47	NUT
		48	CORD
		50	PLUG with GFCI
NOT AVAILABLE		1	TANK
NOT AVAILABLE		4	COVER
NOT AVAILABLE		10	PIN
NOT AVAILABLE		11	SPRINGPIN
NOT AVAILABLE		12	WASHER
NOT AVAILABLE		17	NUT
NOT AVAILABLE		19	PLUG
NOT AVAILABLE		20	SHELF
NOT AVAILABLE		21	LEG
NOT AVAILABLE		25	PUMP HOUSING
NOT AVAILABLE		26	ELBOW
NOT AVAILABLE		30	HOSE
NOT AVAILABLE		31	HOSE CLAMP
NOT AVAILABLE		32	RAPPING SCREW
NOT AVAILABLE		33	SWITCH BOX
NOT AVAILABLE		23	PUMP BRACKET
NOT AVAILABLE		35	TAPPING SCREW
NOT AVAILABLE		37	PAN SCREW
NOT AVAILABLE		38	STAR WASHER
NOT AVAILABLE		39	PUMP HOUSING
NOT AVAILABLE		41	SCREEN COVER
NOT AVAILABLE		42	WORK SHELF
NOT AVAILABLE		44	BASKET
NOT AVAILABLE		35	WORK SHELF
NOT AVAILABLE		45	TAPPING SCREW
NOT AVAILABLE		47	NUT

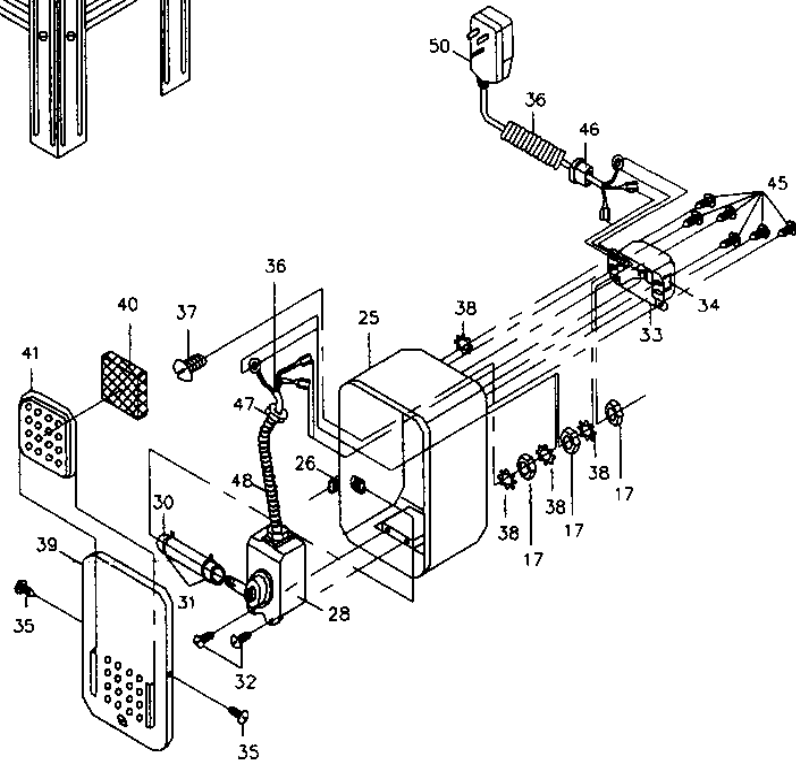
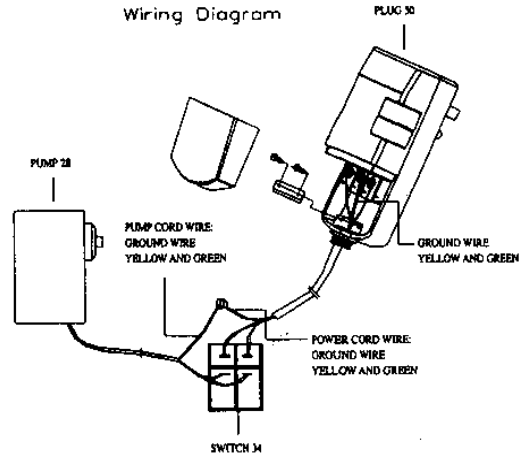
**\* ONLY PARTS WITH A "PART ORDER NUMBER" ARE AVAILABLE**

**DO NOT COPY OR DISTRIBUTE THIS MATERIAL WITHOUT PERMISSION OF AFF, INC.**

# MODEL 31200A - 20 GALLON PARTS WASHER EXPLODED VIEW



Wiring Diagram



**MODEL 31200A - 20 GALLON PARTS WASHER  
PARTS LIST**

PARTS #	DESCRIPTION	QTY	PARTS #	DESCRIPTION	QTY
01	Body	1	31	Hose Clamp	4
04	Cover	1	32	Tapping Screw	2
06	Safety Lever	1	33	Switch Box	1
09	Safety Plate	1	34	Switch	1
10	Pin	4	35	Tapping Screw	2
11	Spring Pin	4	36	Power Cord	1
12	Washer	4	37	Pan Screw	1
17	Nut	3	38	Star Washer	10
19	Plug	1	39	Pump Housing Cover	1
20	Shelf	1	40	Screen	1
21	Leg	4	41	Cover Screen	1
22	Bolt	24	42	Work Shelf	1
23	Spring Washer	24	44	Basket	1
24	Nut	24	45	Tapping Screw	6
25	Pump Housing	1	46	Feed Thru	1
26	Elbow	2	47	Nut	2
27	Flexible Metal Hose	1	48	Flexible Pipe	1
28	Pump	1	50	Plug with GFCI	1
30	Hose	2			



**AMERICAN FORGE & FOUNDRY, INC.™**

## 20 - Gallon Parts Washer

Model 31200A

AFF Parts Washers are designed for fast and efficient cleaning of vehicle parts and subassemblies. All have durable baked enamel finishes and fusible-linked fire covers for safety (always wear the appropriate face and hand protection when using a parts cleaner). Our complete line of parts washers and accessories are designed for use with water-based cleaners (aqueous) for faster, more efficient cleaning.

- 12-gallon working capacity
- 50 GPH pump output
- Safety GFCI plug at 115V/ 0.5A
- Removable work shelf and parts basket
- UL Listed on complete unit
- 30" x 20-1/2" x 36-1/2" overall dimensions
- Ship weight 62 lbs.



### RELATED PRODUCTS



**Model 8810**  
8.3 Gallon Waste Oil Evacuator



**Model 8622A**  
50:1 Air Operate Grease Unit



**Model 8895**  
24 Gallon Waste Oil Drain / Evac.

When it comes to quality car jacks, AFF is the brand you can depend on.