

# 3M™ Eye Protection

Line Card

**3M™ SecureFit™**



Pg 4

**3M™ Solus™**



Pg 6

**3M™ CCS**



Pg 8

**3M™ Virtua™**



Pg 9

**3M™ Maxim™ Elite**



Pg 10

**3M™ Over-the-Glass**



Pg 10

**Additional Models**



Pg 11

**3M™ Goggles**



Pg 12

# Features and Lens Colors



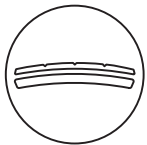
## 3M™ Pressure Diffusion Temple Technology

Eyewear temples self-adjust to a wide range of head sizes, diffusing pressure over the ear and enhancing comfort.



## Adjustable Ratchet Temples

Adjusts the pantoscopic tilt of the lens to help accommodate cheek bone height and improve comfort and fit.



## 3M™ Scotchgard™ Protector Anti-Fog Coating

Lasts longer than traditional anti-fog coatings and remains effective for up to 25 washings with water. Coating is tested to EN168 N & K for anti-fog and anti-scratch.



## Brow Guard

Additional top coverage during impact and leaves room to help airflow.



## Foam Gasket

Helps limit eye exposure to debris but not as tight as a goggle.



## Goggles

Designed to seal to the face. Can be splash/droplet, dust and/or fine dust rated.



## Cord Control System (CCS)

Designed to keep eyewear and earplugs attached, untangled and ready to use.

## Lens Colors & Functions



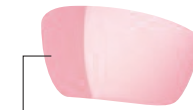
### CLEAR

Highest visual acuity and color recognition



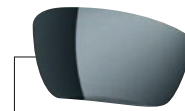
### POLARIZED

Reduces overall brightness, glare and reflected light



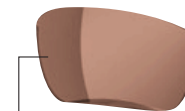
### VERMILLION

Helps improve visual acuity and contrast



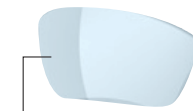
### GRAY

Reduces overall brightness of visible light



### BROWN

Reduces overall brightness, typically allowing color recognition



### BLUE

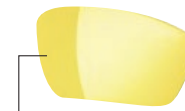
(excl. "sodium blue")

Reduces brightness and glare from yellow light sources. Not intended for use in glass blowing.



### INDOOR/OUTDOOR

Slightly reduces overall brightness of visible light



### AMBER

Increases contrast by filtering hazy and blue-colored light



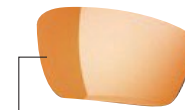
### INFRARED FILTERS

Reduces infrared radiation



### PHOTOCHROMIC

Darkens when exposed to UV light (outdoors) and lightens when UV light is reduced (indoors)



### ORANGE

Reduces blue light in specific applications, e.g., blue light curing




### MIRRORED


Reflects light sources, helping reduce brightness

# Easy Reference Guide



Product	Series	Regulatory		Design							Available Accessory			Lens Color							Lens Coating								
		Impact Rated, Z87+	CSA Z94.3	PDT Temples	Adjustable Ratchet Temples	Dual Lens	Soft Nose Bridge	Molded Nose Bridge	Hinge Screw	Readers	Over the Glasses (OTG)	Brow Guard	Foam Gasket	Strap	Clear	Gray	Indoor/Outdoor	Photochromic	Polarized	Brown	Amber	Orange	Vermillion	Light Blue*	IR Lens	Mirrored Options	AS	AF/AS	SGAF/AS 
3M™ Safety Glasses	SecureFit™	200	●	●	●			●	●			●		●	●												●	●	●
		300	●		●				●					●	●												●	●	●
		400	●	●	●				●	●					●	●			●	●	●					●	●	●	●
		400X	●	●	●				●	●		●			●	●										●	●	●	●
		500	●		●				●	●					●	●										●	●	●	●
		600	●	●	●		●		●	●	●				●	●		●							●		●	●	●
		600 Tactical			●				●	●					●	●		●									●	●	●
		3700	●		●				●	●		●			●	●								●	●		●	●	●
3M™ Safety Glasses	Solus™	1000	●	●				●				●	●	●	●							●						●	●
		1000 TPE	●					●				●	●	●	●													●	●
		2000	●	●		●			●	●			●	●	●	●			●	●				●	●		●	●	●
		CCS	●	●					●	●				●	●	●												●	●
Maxim™ Elite	1000		●			●		●	●				●	●		●	●							●		●	●	●	
Virtua™	CCS	●	●					●	●				●	●												●	●	●	



Product	Series	Regulatory					Design			Available Accessory		Lens Color		Coating			
		Impact Rated, Z87+	D3 (Splash/Droplet)	D4 (Dust)	D5 (Fine Dust)	CSA Z94.3	Over the Glasses (OTG)	Disassemble	Neoprene/Rubber Strap	Prescription Insert	Replaceable Lens	Clear	Gray	Uncoated	AS	AF/AS	SGAF/AS 
3M™ Safety Goggles	GoggleGear™	500	●	●	●	●		●	●	●	●	●	●				●
		2890	●	●	●	●	●					●	●				●
		6000	●	●	●			●	●		●	●	●				●
	Solus™	1000 TPE	●	●	●						●	●				●	
	Centurion™		●	●							●	●	●		●		
	332		●								●	●	●	●			
334		●	●							●	●	●	●				
Modul-R™		●	●			●					●	●	●		●		

\*Excludes "sodium blue"

KEY I/O: Indoor/Outdoor, D3: Droplet & Splash, D4: Dust, D5: Fine Dust, U: Uncoated, AS: Anti-Scratch, AF/AS: Anti-Fog/Anti-Scratch, SGAF/AS: Scotchgard™ Protector Anti-Fog Coating/Anti-Scratch Lens

# 3M™ SecureFit™ Eye Protection

3M™ Safety Glasses

Pressure Diffusion Temple Technology for all-day comfort.



SF201AS



SF301SGAF-LBL



SF401SGAF-RED



SF401AF-FM

Product I.D.	SAP I.D.	Frame Color	Lens Color	Gasket	Coating			Each/Case
					AS	AF/AS	SGAF/AS	
<b>SecureFit™ 200 Series — Lightweight comfort at an affordable price</b>								
SF201AF	7100090435	Clear	Clear			●		20/cs
SF201AS	7000128262	Clear	Clear		●			20/cs
SF202AF	7100022210	Gray	Gray			●		20/cs
SF202AS	7100022211	Gray	Gray		●			20/cs
SF203AF	7100021793	Amber	Amber			●		20/cs
SF203AS	7010293198	Amber	Amber		●			20/cs
SF201SGAF-BLU	7100180044	Blue	Clear				●	20/cs
SF204SGAF-BLU	7100180046	Blue	Blue				●	20/cs
<b>Accessory</b>								
RX-SF400	70071731734	3M™ Protective Eyewear Prescription Insert for SecureFit™ 200						10/cs
<b>SecureFit™ 300 Series — Alternate fit (Asian), designed to help accommodate high cheekbone structure and low nose bridge</b>								
SF301AF	7010315373	Black	Clear			●		20/cs
SF301AS	7010315385	Black	Clear		●			20/cs
SF302AF	7010342616	Black	Gray			●		20/cs
SF302AS	7010386490	Black	Gray		●			20/cs
SF301SGAF-BLU	7100202279	Blue	Clear				●	20/cs
SF301SGAF-LBL	7100202277	Ice Blue	Clear				●	20/cs
SF302SGAF-BLU	7100202280	Blue	Gray				●	20/cs
SF302SGAF-LBL	7100202278	Ice Blue	Gray				●	20/cs
<b>Accessory</b>								
RX-SF400	70071731734	3M™ Protective Eyewear Prescription Insert for SecureFit™ 300						10/cs
<b>SecureFit™ 400 Series — Enhanced comfort and sleek design available in a variety of contemporary colors</b>								
SF401AF	7100112435	Green/Black	Clear			●		20/cs
SF401AF-FM	7100112131	Green/Black	Clear	●		●		20/cs
SF402AF	7100112433	Green/Black	Gray			●		20/cs
SF402AF-FM	7100112244	Green/Black	Gray	●		●		20/cs
SF410AS	7100112436	Green/Black	I/O Mirror		●			20/cs
SF410AS-FM	7100112223	Green/Black	I/O Mirror	●	●			20/cs
SF401SGAF-BLU	7100150838	Blue/Gray	Clear				●	20/cs
SF401SGAF-BLU-F	7100156104	Blue/Gray	Clear	●			●	20/cs
SF401SGAF-RED	7100158218	Red/Gray	Clear				●	20/cs
SF402SGAF-BLU	7100156101	Blue/Gray	Gray				●	20/cs
SF402SGAF-BLU-F	7100156137	Blue/Gray	Gray	●			●	20/cs
SF403SGAF-YEL	7100158219	Yellow/Black	Amber				●	20/cs
SF405SGAF-BLA	7100155940	Brown/Black	Brown				●	20/cs
SF406SGAF-BLA	7100158220	Brown/Black	Orange				●	20/cs
SF407SGAF-BLU	7100156103	Blue/Gray	I/O Gray				●	20/cs
<b>Readers</b>								
SF415AF, +1.5 Diopter	7100115326	Green/Black	Clear			●		20/cs
SF420AF, +2.0 Diopter	7100115325	Green/Black	Clear			●		20/cs
SF425AF, +2.5 Diopter	7100115329	Green/Black	Clear			●		20/cs
<b>Accessory</b>								
RX-SF400	70071731734	3M™ Protective Eyewear Prescription Insert for SecureFit™ 400						10/cs
SF-FOAM	7100112132	Replacement Foam Gasket						20/bag

**KEY** I/O: Indoor/Outdoor, U: Uncoated, AS: Anti-Scratch, AF/AS: Anti-Fog/Anti-Scratch, SGAF/AS: Scotchgard™ Protector Anti-Fog Coating/Anti-Scratch Lens

Pressure Diffusion Temple Technology for all-day comfort.



SF401XSGAF-BLU



SF501AF-BLK



SF601SGAF-TAC

Product I.D.	SAP I.D.	Frame Color	Lens Color	Foam Gasket	Coating			Each/Case	
					AS	AF/AS	SGAF/AS		
<b>SecureFit™ 400X Series — Includes non-removable brow guard</b>									
SF401XAF-GRN	7100180045	Green/Black	Clear			●		20/cs	
SF401XAS-GRN	7010528317	Green/Black	Clear		●			20/cs	
SF401XSGAF-BLU	7100180049	Blue/Gray	Gray				●	20/cs	
SF401XSGAF-GRN	7100180048	Hi-Vis Green/Clear	Gray				●	20/cs	
SF401XSGAF-WHT	7100179970	Light Blue/White	Clear				●	20/cs	
SF402XAF-GRN	7100180047	Green/Black	Gray			●		20/cs	
SF402XAS-GRN	7100180052	Green/Black	Gray		●			20/cs	
SF402XSGAF-BLU	7100180050	Blue/Gray	Gray				●	20/cs	
SF403XSGAF-YEL	7100179972	Yellow/Black	Amber				●	20/cs	
SF407XSGAF-BLU	7100180051	Blue/Gray	I/O Gray				●	20/cs	
SF409XAS-PNK	7100180054	Pink/Black	Silver Mirror		●			20/cs	
SF416XAS-BLK	7100180036	Gray/Black	Orange Mirror		●			20/cs	
<b>SecureFit™ 500 Series — Contemporary slim lens design with adjustable ratchet temples</b>									
SF501AF-BLK	70071737111	Clear/Black	Clear			●		20/cs	
SF502AF-BLK	70071737129	Clear/Black	Gray			●		20/cs	
SF507AF-BLK	70071737137	Clear/Black	I/O Gray			●		20/cs	
SF501AS-BLK	70071737145	Clear/Black	Clear		●			20/cs	
<b>SecureFit™ 600 Series — Stylish dual-lens frame with a variety of lens options</b>									
SF601RAS	7100132252	Gray	Clear		●			20/cs	
SF601SGAF	7100128689	Gray	Clear				●	20/cs	
SF601SGAF-FM	7100133322	Gray	Clear	●			●	20/cs	
SF602RAS	7100132358	Gray	Gray		●			20/cs	
SF602SGAF	7100128690	Gray	Gray				●	20/cs	
SF602SGAF-FM	7100132350	Gray	Gray	●			●	20/cs	
SF603SGAF	7100141599	Gray	Amber				●	20/cs	
SF607SGAF	7100132351	Gray	I/O Gray				●	20/cs	
SF611AS	7100132381	Gray	Gray Polarized		●			20/cs	
SF613AS	7100132380	Gray	Photochromic		●			20/cs	
SF617AS	7100132254	Gray	Low IR		●			20/cs	
SF630AS	7100132255	Gray	Shade 3 IR		●			20/cs	
SF650AS	7100132256	Gray	Shade 5 IR		●			20/cs	
<b>Readers</b>									
SF615GSGAF, +1.5 Diopter	7100132362	Gray	Gray				●	20/cs	
SF615SGAF, +1.5 Diopter	7100132357	Gray	Clear				●	20/cs	
SF620GSGAF, +2.0 Diopter	7100132361	Gray	Gray				●	20/cs	
SF620SGAF, +2.0 Diopter	7100132359	Gray	Clear				●	20/cs	
SF625GSGAF, +2.5 Diopter	7100132382	Gray	Gray				●	20/cs	
SF625SGAF, +2.5 Diopter	7100132360	Gray	Clear				●	20/cs	
<b>Tactical — Tested to military vo high velocity impact requirement of MIL-PRF 32432(GL)*</b>									
SF601SGAF-TAC	7100132253	Black	Clear				●	10/cs	
SF602SGAF-TAC	7100132369	Black	Gray				●	10/cs	
SF603SGAF-TAC	7100132368	Black	Amber				●	10/cs	
SF613AS-TAC	7100136224	Black	Photochromic		●			10/cs	
<b>Accessory</b>									
SF600FI	7100132738	600 Series Replacement Foam Gasket							20/bag

\*15 caliber — 640-660 ft./sec. Note: This product is not currently listed on any QPL or QML program.

**KEY** I/O: Indoor/Outdoor, U: Uncoated, AS: Anti-Scratch, AF/AS: Anti-Fog/Anti-Scratch, SGAF/AS: Scotchgard™ Protector Anti-Fog Coating/Anti-Scratch Lens

# 3M™ Solus™ Eye Protection

Comfortable and stylish with a variety of features and customization options.



S1101SGAF



S1101SGAF-KT



S1201SGAF-TSKT

Product I.D.	SAP I.D.	Frame Color	Lens Color	Kit		Coating			Each/Case	
				Strap	Gasket	AS	AF/AS	SGAF/AS		
<b>Solus™ 1000 Series — Configurable design with detachable gasket, temple or strap options</b>										
S1101SGAF	7100079183	Black/Blue	Clear					●	20/cs	
S1102SGAF	7100079184	Black/Blue	Gray					●	20/cs	
S1103SGAF	7100079185	Black/Blue	Amber					●	20/cs	
S1107SGAF	7100131794	Blue/Black	I/O					●	20/cs	
S1201SGAF	7100079049	Green/Black	Clear					●	20/cs	
S1202SGAF	7100079180	Green/Black	Gray					●	20/cs	
S1203SGAF	7100079181	Green/Black	Amber					●	20/cs	
S1207SGAF	7100127035	Green/Black	I/O					●	20/cs	
S1401SGAF	7100181053	Pink/Black	Clear					●	20/cs	
S1402SGAF	7100181054	Pink/Black	Gray					●	20/cs	
S1407SGAF	7100168177	Pink/Black	I/O Gray					●	20/cs	
S1501SGAF	70071733656	Black	Clear					●	20/cs	
S1502SGAF	70071733664	Black	Gray					●	20/cs	
S1507SGAF	70071734001	Black	I/O Gray					●	20/cs	
<b>Solus™ 1000 Series - Kits</b>										
S1101SGAF-KT	7100079186	Black/Blue	Clear	●	●			●	20/cs	
S1102SGAF-KT	7100105846	Black/Blue	Gray	●	●			●	20/cs	
S1107SGAF-KT	7100131819	Blue/Black	I/O	●	●			●	20/cs	
S1201SGAF-KT	7100079182	Green/Black	Clear	●	●			●	20/cs	
S1202SGAF-KT	7010341346	Green/Black	Gray	●	●			●	20/cs	
S1502SGAF-KT	70071734019	Black	Gray	●	●			●	20/cs	
S1521SGAF-KT	70071734027	Black	I/O Vermillion	●	●			●	20/cs	
S1523SGAF-KT	70071734035	Black	Vermillion	●	●			●	20/cs	
<b>Coming in August 2020: Solus™ 1000 TPE — Flexible seal that adapts to wearer's face contours, D3- D4-rated</b>										
<b>Solus™ TPE Series Kits - Comes assembled with temples and TPE gasket attached. Strap included</b>										
S1201SGAF-TKT	70071734142	Clear/Green/Black	Clear	●	●			●	20/cs	
S1202SGAF-TKT	70071734159	Clear/Green/Black	Gray	●	●			●	20/cs	
S1207SGAF-TKT	70071734167	Clear/Green/Black	I/O Gray	●	●			●	20/cs	
<b>Solus™ TPE Series - Comes assembled with TPE gasket and strap attached</b>										
S1201SGAF-TSKT	70071734175	Clear/Green/Black	Clear	●	●			●	20/cs	
S1202SGAF-TSKT	70071734183	Clear/Green/Black	Gray	●	●			●	20/cs	
S1207SGAF-TSKT	70071734191	Clear/Green/Black	I/O Gray	●	●			●	20/cs	
<b>Accessories</b>										
Solus-Strap	7100085458	Solus™ Replacement Strap								10/bag
Solus-Foam	7100079749	Solus™ Replacement Foam Gasket								10/bag
S1000-CASE	70071734043	Solus™ Carrying Case								10/box

# 3M™ Solus™ Eye Protection

Comfortable and stylish with a variety of features and customization options.



S2001SGAF-RED

Product I.D.	SAP I.D.	Frame Color	Lens Color	Foam Gasket	Coating			Each/Case
					AS	AF/AS	SGAF/AS	
<b>Solus™ 2000 Series — Adjustable ratchet temples for a customized fit</b>								
S2001SGAF-RED	7100203160	Gray/Red	Clear				●	20/cs
S2001SGAF-CLR	7100221705	Clear/Blue	Clear				●	20/cs
S2002SGAF-RED	7100203163	Gray/Red	Gray				●	20/cs
S2024AS-RED	7100203162	Gray/Red	Red Mirror		●			20/cs
S2001SGAF-BGR	7100203178	Black/Green	Clear				●	20/cs
S2002SGAF-BGR	7100203287	Black/Green	Gray				●	20/cs
S2003SGAF-BGR	7100203164	Black/Green	Amber				●	20/cs
S2005SGAF-BGR	7100203166	Black/Green	Brown				●	20/cs
S2007SGAF-BGR	7100203171	Black/Green	I/O Gray				●	20/cs
S2001SGAF-BGR-F	7100203183	Black/Green	Clear	●			●	20/cs
S2001AS-BLU	7100203072	Blue/Gray	Clear		●			20/cs
S2001AF-BLU	7100203151	Blue/Gray	Clear			●		20/cs
S2008AS-CLR	7100221706	Clear/Blue	Blue Mirror		●			20/cs
<b>Solus™ 2000 Series IR Shade Models</b>								
S2017AS-BLK	7100203187	Black/Green	Gray		●			20/cs
S2030AS-BLK	7100203188	Black/Green	Gray		●			20/cs
S2050AS-BLK	7100203186	Black/Green	Gray		●			20/cs
<b>Solus™ 2000 Series Readers</b>								
S2015AF-BLU, +1.5 Diopter	7100221704	Blue/Gray	Clear			●		20/cs
S2020AF-BLU, +2.0 Diopter	7100222269	Blue/Gray	Clear			●		20/cs
S2025AF-BLU, +2.5 Diopter	7100222135	Blue/Gray	Clear			●		20/cs



# 3M™ Solus™ CCS and 3M™ Virtua™ CCS Eye Protection

Designed to keep eyewear and earplugs attached, untangled and ready to use.



SCCS01SGAF-GRN-F



11872-00000-20

Product I.D.	SAP I.D.	Frame Color	Lens Color	Foam Gasket	Coating			Each/Case
					AS	AF/AS	SGAF/AS	
<b>Solus™ CCS Series</b>								
SCCS01SGAF-GRN	7100196396	Green	Clear				●	20/cs
SCCS02SGAF-GRN	7100196395	Green	Gray				●	20/cs
SCCS07SGAF-GRN	7100196394	Green	I/O Gray				●	20/cs
SCCS01SGAF-GRN-F	7100196393	Green	Clear	●			●	20/cs
SCCS02SGAF-GRN-F	7100196397	Green	Gray	●			●	20/cs
SCCS07SGAF-GRN-F	7100196398	Green	I/O Gray	●			●	20/cs
<b>Virtua™ CCS Series</b>								
11796-00000-20	7010340677	Blue	Clear			●		20/cs
11797-00000-20	7000052872	Blue	Clear		●			20/cs
11798-00000-20	7010384246	Gray	Gray			●		20/cs
11799-00000-20	7000052873	Gray	Gray	●	●			20/cs
11872-00000-20	7000128259	Blue	Clear	●		●		20/cs
11873-00000-20	7000128260	Gray	Gray	●		●		20/cs
11874-00000-20	7000128261	Blue	I/O Mirror	●		●		20/cs
<b>Virtua™ CCS Series Readers</b>								
VC215AF, +1.5 Diopter	7100046796	Blue	Clear	●		●		20/cs
VC220AF, +2.0 Diopter	7100046672	Blue	Clear	●		●		20/cs
VC225AF, +2.5 Diopter	7100046673	Blue	Clear	●		●		20/cs
<b>Accessory</b>								
VCRG1	7010316613	Virtua™ CCS Replacement Gasket						10/bag



# 3M™ Virtua™ Eye Protection

Economical eye protection with a variety of lens tints and features.



11326-00000-20

Product I.D.	SAP I.D.	Frame Color	Lens Color	Coating			Each/ Case
				AS	AF/AS	SGAF/AS	
<b>Virtua™ Series</b>							
11228-00000-100	7100114652	Clear	Clear				100/cs
11326-00000-100	7100110886	Clear	Clear	●			100/cs
11326-00000-20	7100109223	Clear	Clear	●			20/cs
11327-00000-20	7100114636	Gray	Gray	●			20/cs
11328-00000-20	7100123356	Clear	I/O	●			20/cs
11329-00000-100	7010315357	Clear	Clear		●		100/cs
11329-00000-20	7100112434	Clear	Clear		●		20/cs
11330-00000-20	7010386340	Gray	Gray		●		20/cs
11331-00000-20	7010342584	Blue Mirror	Blue Mirror	●			20/cs
<b>Virtua™ Series Readers</b>							
11513-00000-20, +1.5 Diopter	7000127511	Clear	Clear		●		20/cs
11514-00000-20, +2.0 Diopter	7000127512	Clear	Clear		●		20/cs
11515-00000-20, +2.5 Diopter	7000127513	Clear	Clear		●		20/cs
<b>Virtua™ V6X Series</b>							
V6X01AF	7010385395	Black	Clear		●		20/cs
V6X01HC	7010386147	Black	Clear	●			20/cs
V6X02AF	7010342477	Black	Gray		●		20/cs
V6X02HC	7010302094	Black	Gray	●			20/cs
V6X10IO	7010385396	Black	I/O Mirror	●			20/cs
<b>Virtua™ Sport Series</b>							
11384-00000-20	7000042889	Clear	Clear		●		20/cs
11385-00000-20	7000127495	Clear	Clear	●			20/cs
11386-00000-20	7100006817	Gray	Gray		●		20/cs
11388-00000-20	7000127496	Clear	I/O	●			20/cs
11542-00000-20	7000127517	Light Blue	Light Blue		●		20/cs
11543-00000-20	7000127518	Light Blue	Light Blue	●			20/cs
11544-00000-20	7000127519	Light Amber	Amber		●		20/cs
11743-00000-20	7000127527	Gray	I/O Gray	●			20/cs
<b>Virtua™ AP Series</b>							
11815-00000-20	7000030050	Gray	Gray	●			20/cs
11816-00000-20	7000030051	Light Blue	Light Blue	●			20/cs
11817-00000-20	7000030052	Amber	Amber	●			20/cs
11819-00000-20	7000030054	Clear	Clear	●			20/cs
11847-00000-20	7000030055	Mirror	I/O Mirror	●			20/cs
11848-00000-20	7010342193	Gray	Gray		●		20/cs





SF3701SGAF-BLU

## 3M™ Over-The-Glass (OTG) Eye Protection

Protection that fits over most prescription eyewear.



MXE1014SGAF-GRN

## 3M™ Maxim™ Elite Eye Protection

Performance fused with modern accents and a variety of coating options.

Product I.D.	SAP I.D.	Frame Color	Lens Color	Brow Guard	Coating			Each/Case
					AS	AF/AS	SGAF/AS	
<b>SecureFit™ 3700 Series — Over-The-Glass protection designed with self-adjusting temple technology for all-day wearability</b>								
SF3701SGAF-BLU	7100203179	Blue	Clear				●	10/cs
SF3701AS-BLU	7100203180	Blue	Clear		●			10/cs
SF3701SGAF-GRN	7100203194	Green	Clear				●	10/cs
SF3701AS-GRN	7100203193	Green	Clear		●			10/cs
SF3701SGAF-ORG	7100203172	Orange	Clear				●	10/cs
SF3701AS-ORG	7100203173	Orange	Clear		●			10/cs
SF3702SGAF-BLU	7100203203	Blue	Gray				●	10/cs
SF3702AS-BLU	7100203175	Blue	Gray		●			10/cs
SF3703SGAF-GRN	7100203192	Green	Amber				●	10/cs
SF3704SGAF-BLU	70071732138	Blue	Blue				●	10/cs
SF3706AS-GRY	70071732161	Gray	Orange		●			10/cs
SF3707SGAF-BLU	7100203165	Blue	I/O Gray				●	10/cs
SF3707AS-BLU	7100203195	Blue	I/O Gray		●			10/cs
SF3717AS-BLK	70071732112	Black	IR 1.7 Gray		●			10/cs
SF3730AS-BLK	70071732120	Black	IR 3.0 Gray		●			10/cs
SF3750AS-BLK	70071732146	Black	IR 5.0 Gray		●			10/cs
SF3701XSGAF-BLU	7100203198	Blue	Clear	●			●	10/cs
SF3701XAS-BLU	7100203197	Blue	Clear	●	●			10/cs
SF3701XSGAF-RED	7100203174	Red	Clear	●			●	10/cs
SF3702XSGAF-BLU	7100203196	Blue	Gray	●			●	10/cs
SF3707XSGAF-BLU	7100203190	Blue	I/O Gray	●			●	10/cs
SF3701XASGAF-BLU	7100203189	Blue, Asian Fit	Clear	●			●	10/cs
SF3701ASGAF-BLU	7100203191	Blue, Asian Fit	Clear				●	10/cs
<b>Tour-Guard™ V Series</b>								
TGV01-100	7100086111	Clear	Clear		●			100/cs
TGV01-20	7100089472	Clear	Clear		●			20/cs
<b>OX™</b>								
12159-00000-20	7000002372	Black	Clear			●		20/cs
12166-00000-20	7000002373	Black	Clear			●		20/cs
12163-00000-20	7000042891	Black	Clear			●		20/cs

Product I.D.	SAP I.D.	Frame Color	Lens Color	Coating			Each/Case
				AS	AF/AS	SGAF/AS	
<b>Maxim™ Elite 1000 Series</b>							
MXE1001SGAF-BLK	7100222265	Black	Clear			●	20/cs
MXE1002SGAF-BLK	7100222266	Black	Gray			●	20/cs
MXE1007SGAF-BLK	7100222268	Black	I/O Gray			●	20/cs
MXE1008AF-CLR	7100222267	Clear	Blue Mirror		●		20/cs
MXE1029SGAF-BLK	7100222270	Black	Blue-Violet Mirror			●	20/cs
MXE1013SGAF-BLK	7100222264	Black	Photochromic			●	5/cs
MXE1014SGAF-GRN	7100222271	Olive	Brown Polarized			●	5/cs

# Additional Models

Product I.D.	SAP I.D.	Frame Color	Lens Color	Brow Bar, Side Shields	AF/AS Coating	Each/Case
<b>Metaliks™</b>						
15170-10000-20	7000127552	Polished Metal	Clear		●	20/cs
15171-10000-20	7000052830	Polished Metal	Gray		●	20/cs
15172-10000-20	7000127571	Polished Metal	I/O Mirror		●	20/cs
<b>Metaliks™ Sport</b>						
11343-10000-20	7000127488	Brushed Nickel	Clear		●	20/cs
11344-10000-20	7100009573	Brushed Nickel	Gray		●	20/cs
11345-10000-20	7000042888	Brushed Nickel	I/O Mirror		●	20/cs
11540-10000-20	7100006313	Brushed Nickel	Blue Mirror		●	20/cs
<b>Nuvo™</b>						
11434-00000-20	7000052797	Gray	Clear		●	20/cs
11435-00000-20	7000052798	Gray	Clear		●	20/cs
11436-00000-20	7000052799	Gray	Clear		●	20/cs
<b>Nuvo™ Readers</b>						
11434-00000-20, +1.5 Diopter	7000052797	Gray	Clear		●	20/cs
11435-00000-20, +2.0 Diopter	7000052798	Gray	Clear		●	20/cs
11436-00000-20, +2.5 Diopter	7000052799	Gray	Clear		●	20/cs
11500-00000-20, +1.5 Diopter	7000127509	Gray	Gray	●	●	20/cs
11501-00000-20, +2.0 Diopter	7000127510	Gray	Gray	●	●	20/cs

Product I.D.	SAP I.D.	Frame Color	Lens Color	AF/AS Coating	Each/Case
<b>BX™</b>					
11380-00000-20	7000052795	Silver/Black	Clear	●	20/cs
11381-00000-20	7000052796	Silver/Black	Gray	●	20/cs
11471-00000-20	7000052800	Blue	Clear	●	20/cs
11525-00000-20	7000052804	Blue	I/O Gray	●	20/cs
<b>BX™ Readers</b>					
11374-00000-20, +1.5 Diopter	7000127490	Silver/Black	Clear	●	20/cs
11375-00000-20, +2.0 Diopter	7000052794	Silver/Black	Clear	●	20/cs
11376-00000-20, +2.5 Diopter	7000127491	Silver/Black	Clear	●	20/cs
11377-00000-20, +1.5 Diopter	7000127492	Silver/Black	Gray	●	20/cs
11378-00000-20, +2.0 Diopter	7000127493	Silver/Black	Gray	●	20/cs
11379-00000-20, +2.5 Diopter	7000127494	Silver/Black	Gray	●	20/cs
<b>BX™ Dual Readers</b>					
11457-00000-20, +1.5 Diopter	7000127661	Silver	Clear	●	20/cs
11458-00000-20, +2.0 Diopter	7000127662	Silver	Clear	●	20/cs
11459-00000-20, +2.5 Diopter	7000127663	Silver	Clear	●	20/cs

# 3M™ Goggles

3M™ Safety Goggles

Product I.D.	SAP I.D.	Frame Color	Lens Color	Neoprene Strap	Coating				Each/Case
					U	AS	AF/AS	SGAF/AS	
<b>GoggleGear™ 2890 Series</b>									
GG2892-SGAF	7010386491	Black	Gray					●	10/cs
GG2891-SGAF	7010386529	Gray	Clear					●	10/cs
GG2891S-SGAF	7010302104	Gray	Clear					●	10/cs
<b>GoggleGear™ 500 Series</b>									
GG501SGAF	7100079187	Gray	Clear					●	10/cs
GG501NSGAF	7100112956	Gray	Clear	●				●	10/cs
GG502SGAF	7100168468	Gray	Gray					●	10/cs
<b>Accessories</b>									
GG500-PI	7100084923	GoggleGear™ 500 Series Prescription Insert							10/cs
GG500-NeoStrap	7010316627	GoggleGear™ 500 Series Replacement Neoprene Strap							10/cs
GG500-ClthStrap	7010341344	GoggleGear™ 500 Series Replacement Cloth Strap							10/cs
<b>GoggleGear™ 6000 Series</b>									
GG6001SGAF-BLK	7100191924	Black	Clear					●	10/cs
GG6001SGAF-GRN	7100191925	Green	Clear					●	10/cs
GG6001SGAF-RED	7100191926	Red	Clear					●	10/cs
GG6002SGAF-BLK	7100191930	Black	Gray					●	10/cs
GG6001AF-GRY	7100191929	Gray	Clear			●			10/cs
GG6001NSGAF-BLU	7100191928	Blue	Clear	●				●	10/cs
<b>Accessory</b>									
GG6001SGAF-LENS	7100191927	GoggleGear™ 6000 Series SGAF/AS Clear Replacement Lens							30/cs



GG6001SGAF-GRN

**KEY** U: Uncoated, AS: Anti-Scratch, AF/AS: Anti-Fog/Anti-Scratch, SGAF/AS: Scotchgard™ Protector Anti-Fog Coating/Anti-Scratch Lens



Product I.D.	SAP I.D.	Frame Color	Lens Color	D3/D4 rated	Coating				Each/Case
					U	AS	AF/AS	SGAF/AS	
<b>Centurion™</b>									
40300-00000-10	7000127564	Clear	Clear		●				10/cs
40301-00000-10	7100009575	Clear	Clear				●		10/cs
40304-00000-10	7000127565	Clear	Clear	●	●				10/cs
40305-00000-10	7000002377	Clear	Clear	●			●		10/cs
<b>332</b>									
40650-00000-10	7010340634	Clear	Clear		●				10/cs
40651-00000-10	7000030007	Clear	Clear				●		10/cs
<b>334</b>									
40660-00000-10	7000052836	Clear	Clear	●	●				10/cs
40661-00000-10	7000002378	Clear	Clear	●			●		10/cs
<b>Modul-R™ — Face shield attachment</b>									
40658-00000-10	7000030008	Clear	Clear				●		10/cs

Product I.D.	SAP I.D.	Frame Color	Lens Color	Kit		Coating			Each/Case
				Strap	D3/D4 rated	AS	AF/AS	SGAF/AS	
<b>Coming in August 2020: Solus™ 1000 TPE — Flexible seal that adapts to wearer's face contours, D3- D4-rated</b>									
S1201SGAF-TSKT	7100233038	Clear/Green/Black	Clear	●	●			●	20/cs
S1202SGAF-TSKT	7100232887	Clear/Green/Black	Gray	●	●			●	20/cs
S1207SGAF-TSKT	7100232856	Clear/Green/Black	I/O Gray	●	●			●	20/cs
<b>Accessories</b>									
Solus-Strap	7100234544	Solus™ Replacement Strap							10/bag
Solus-Foam	7100235154	Solus™ Replacement Foam Gasket							10/bag
S1000-CASE	7100235153	Solus™ Carrying Case							10/box