

# Sinfony™

## Indirect Lab Composite



*The indirect lab composite that combines strength, beauty and versatility.*





Before



After

# Sinfony™ Indirect Lab

## Long-lasting. Natural-looking. Proven.

Your patients want long-lasting, good-looking restorations. You want a product that has been proven in clinical studies to be reliable over time. Now there's an indirect lab composite that's proven itself in clinical tests and looks as good after five years as it does after five minutes. With 3M™ ESPE™ Sinfony™ Indirect Lab Composite, you have a restorative that makes your patients happy—and performs reliably for you.

Sinfony indirect lab composite has been proven in clinical tests to be durable, match natural shades, and resist plaque. In fact, in a recent 3-year clinical evaluation of the Sinfony material, wear resistance was rated a perfect 5 out of 5. And 96% of patients surveyed gave Sinfony indirect lab composite an “excellent” rating for comfort and esthetics.

## Key Features

- Excellent esthetics and translucency
- Superior wear characteristics
- Excellent polish retention
- Ease of finishing and polishing
- Plaque and stain resistance

## Inlay/Onlay Indications

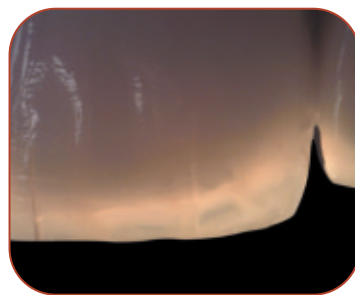
- For cases of complex preparation design (and porcelain restorations are too fragile)
- For cases with 4–5mm preparation depth
- For cases when the opposing tooth structure is maintained in enamel
- For cases when the isthmus exceeds  $\frac{1}{2}$  of the intra-cuspal dimension causing direct composite restorations to lose their benefit
- For cases when the goal is to retain healthy tooth structure that would be destroyed with a full-coverage crown restoration

## Esthetics



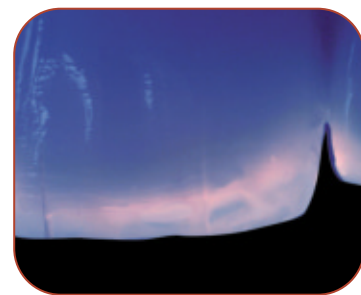
### Natural Light

Close-up view of the incisal region in reflected light.



### Amber Opalescent Effect

Close-up view of the incisal region in transmitted light.



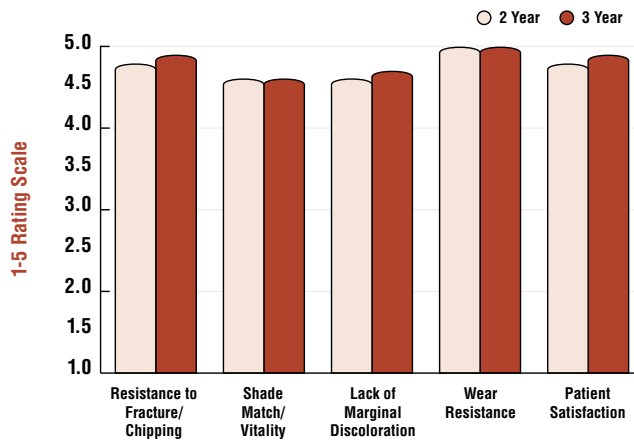
### Fluorescence

Close-up view of the incisal region in UV light.

# lab Composite by 3M ESPE

## Clinical Results

In three years of clinical testing, Sinfony indirect lab composite received high ratings.



THE DENTAL ADVISOR, Vol. 20, No. 1, January 2003

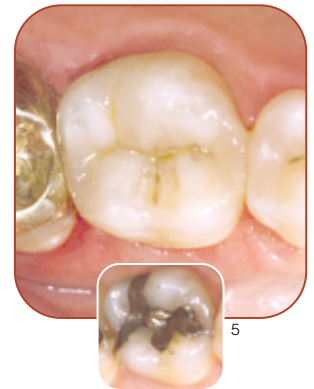
## Excellent Long-Term Performance

Dentistry and photography courtesy of Jeff J. Brucia, DDS

5-year recall



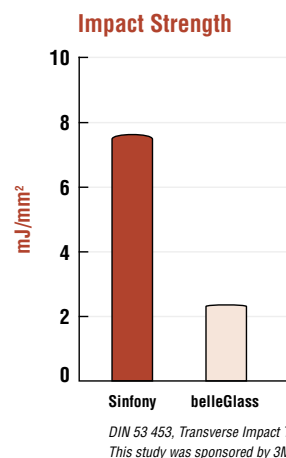
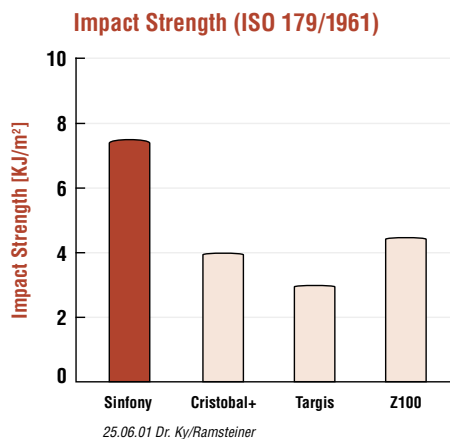
5-year recall



“Sinfony restorations provide an excellent treatment approach when more complex preparation designs are required for inlay and onlay restorations to permit greater conservation of tooth structure than with porcelain inlay and onlay restorations.”

Jeff J. Brucia, DDS

## Strength



## Easy to Use, Proven strong

### RelyX™ Unicem Cement by 3M ESPE

For a cement that is strong, versatile and easy to use, we recommend RelyX Unicem cement. This universal resin cement was specifically formulated to be self-adherent and moisture tolerant, eliminating the need for a separate priming, etching or bonding step. It also greatly reduces potential for patient sensitivity.

### Cementation of Sinfony™ Indirect Lab Composites can be accomplished with proven, conventional techniques using any of the following cements:

- 3M™ ESPE™ RelyX™ Unicem Self-Adhesive Universal Resin Cement
- 3M™ ESPE™ RelyX™ Luting Cement
- 3M™ ESPE™ Ketac™ -Cem Glass Ionomer Cement

## Simple to Use, Proven to Last

### CoJet™ System

The CoJet system is a simple and proven system to enhance bond strength of a resin cement to your restoration.

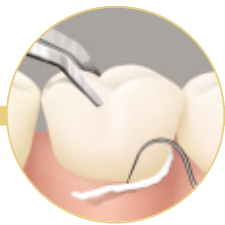


## Cementation Technique\* with RelyX Unicem Cement



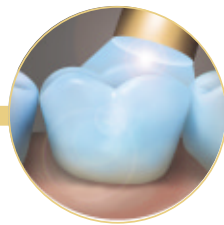
### Dispensing

Dispense cement directly onto bonding surface of restoration or directly onto tooth surface for inlays and onlays.



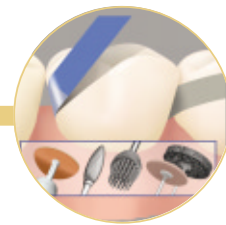
### Placement

Seat restoration and hold in place with light pressure.



### Final Cure

For translucent ceramic restorations, light-cure each surface for 20 seconds.



### Finish and Polish

Remove cement from exposed surfaces using appropriate instrument and polishing paste.