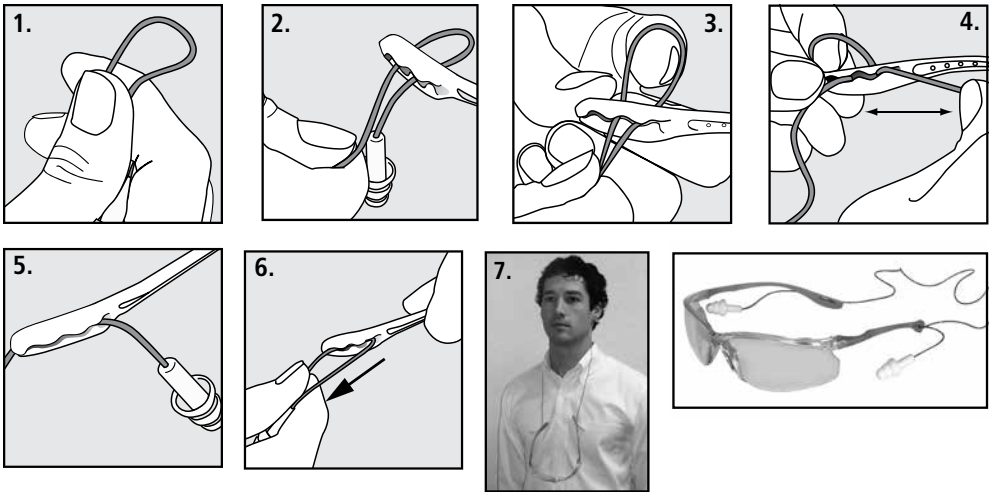


## Assembly Instructions for Cord Control System (CCS)



1. Make a loop with the earplug cord.
2. Thread loop through the temple-tip, starting from outside, making sure the earplug is toward eyewear front. Make sure earplug end is facing the front of the glass.
3. Pass finger inside the loop.
4. Pull on each end of cord until it is secured in the wave located on the end of the temple.
5. Pull earplug cord to straighten in temple. Do not pull on earplug as this could result in the separation of the earplug and cord.
6. To Remove: Pull both ends of the cord (together) away from the temple. OR Cut earplug cord with a scissor.
7. When earplugs are not in use, the CCS feature allows the corded earplugs to dual as a lanyard - a cord worn around the neck for carrying your protective eyewear.